

# SURVEILLANCE BUILDING AND GUARD POST

## LEGEND

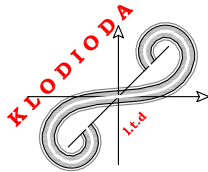
**Security upgrade of Ministry of Interior (Mol)  
Main Supply Centre “Mullet”- -Small Arms Light  
Weapons(SALW) and ammunition storage location,  
Second Phase**

### DETAILED DESIGN

### SURVEILLANCE BUILDING AND GUARD POST



**UNITED NATIONS  
DEVELOPMENT  
PROGRAMME  
ALBANIA**



**"KLODIODA" l.t.d**

Rr.Barrikadave P.118 Kati III, Zyra Nr.2  
Tiranë - Shqipëri  
klodioda@gmail.com  
klodioda@yahoo.com

Design Team			Scale
	Eng. YLLI KARAPICI		1:25
	Eng. XHEVAHIR ALIU		Date MARCH 2020
	Eng. PAMELA KURTULAJ		
	Eng. EJONA BEZHANI		Sheet Name Page F-0.00
	Eng. YLLI BILALI		

# ARCHITECTURE

## LEGEND

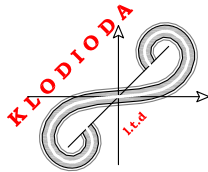
**Security upgrade of Ministry of Interior (Mol)  
Main Supply Centre “Mullet”- -Small Arms Light  
Weapons(SALW) and ammunition storage location,  
Second Phase**

### DETAILED DESIGN

### ARCHITECTURE



**UNITED NATIONS  
DEVELOPMENT  
PROGRAMME  
ALBANIA**

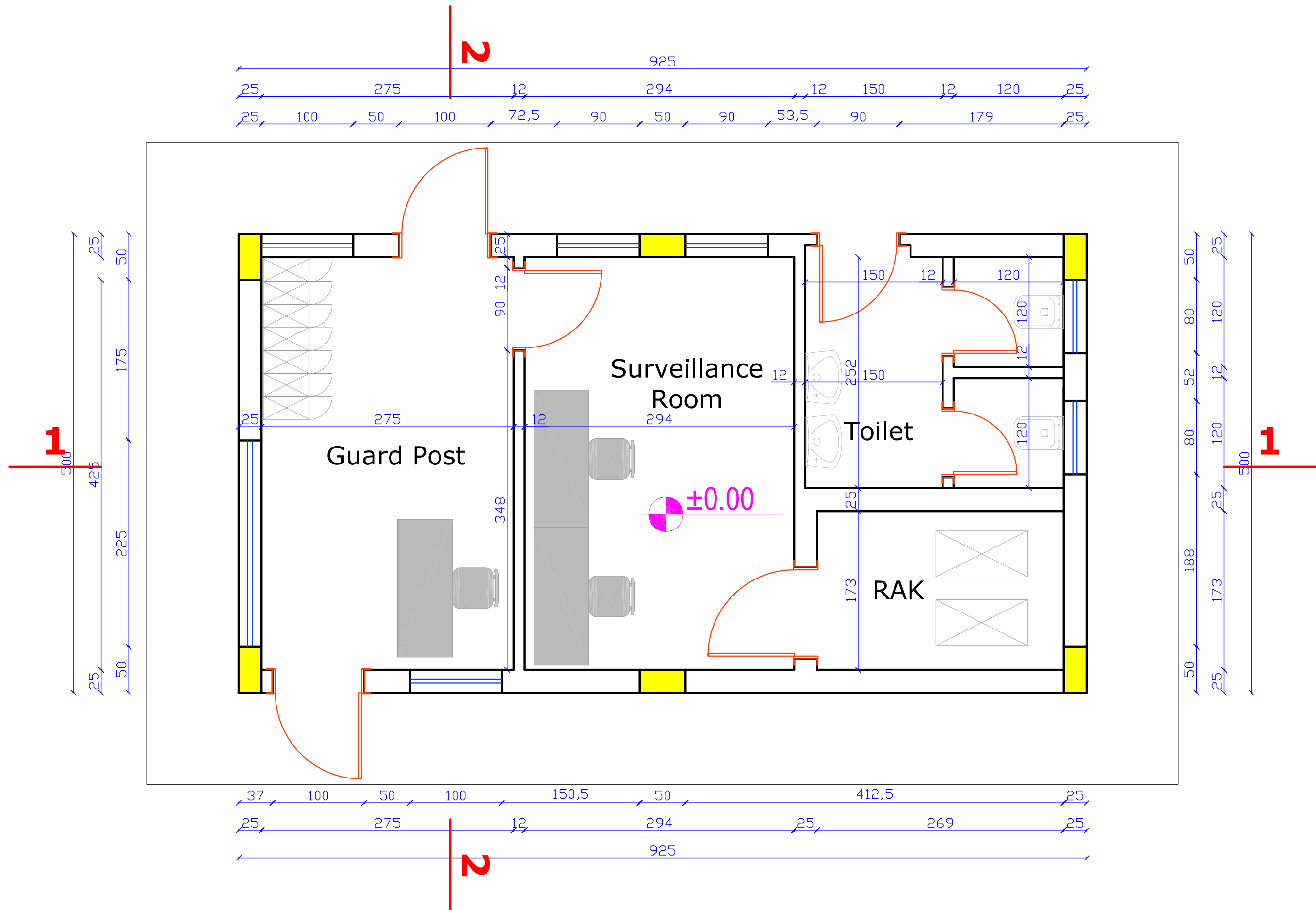


**"KLODIODA" l.t.d**

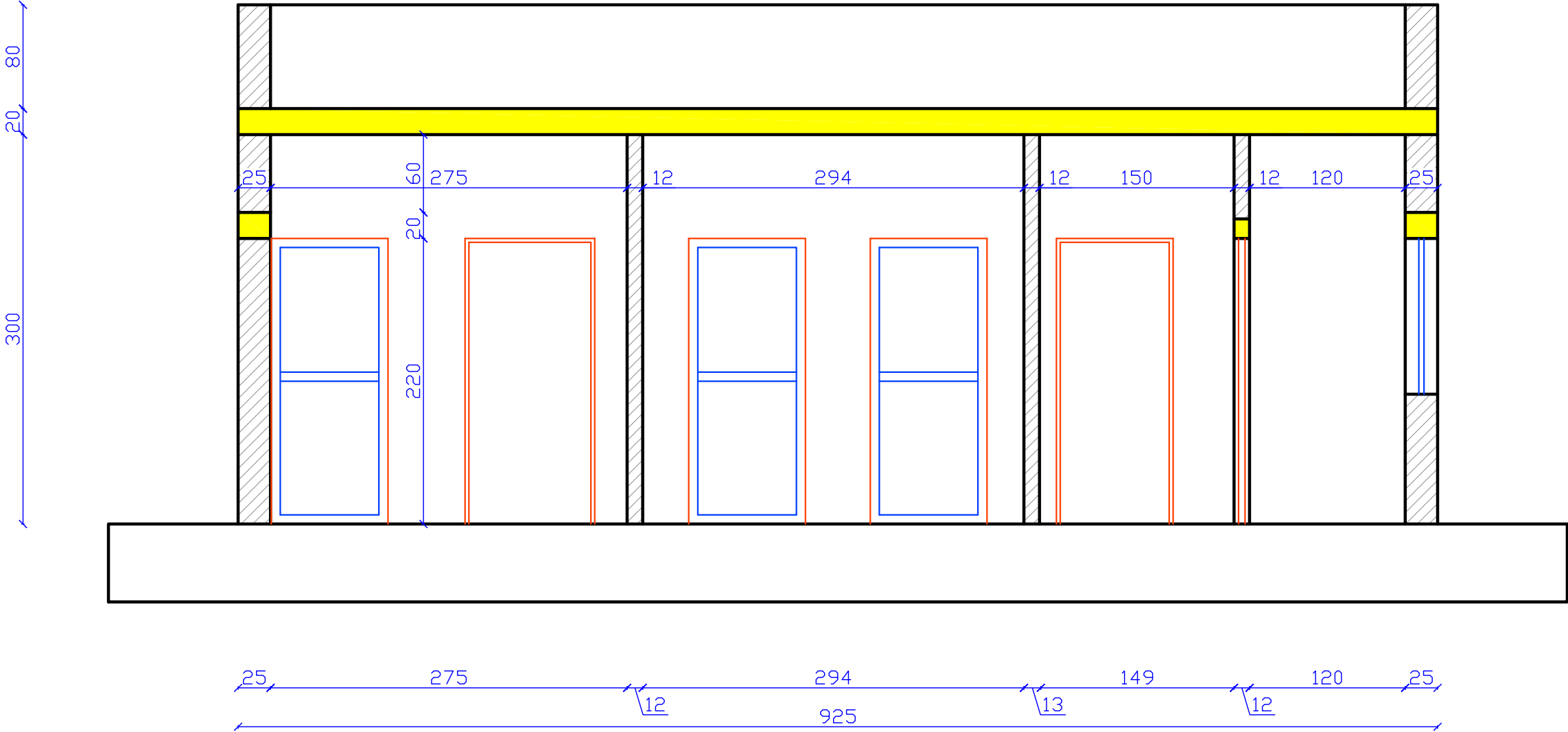
Rr.Barrikadave P.118 Kati III, Zyra Nr.2  
Tiranë - Shqipëri  
klodioda@gmail.com  
klodioda@yahoo.com

Design Team			Scale
	Eng. YLLI KARAPICI		1:25
	Eng. XHEVAHIR ALIU		MARCH 2020
	Eng. PAMELA KURTULAJ		
	Eng. EJONA BEZHANI		Page F-1.00
	Eng. YLLI BILALI		

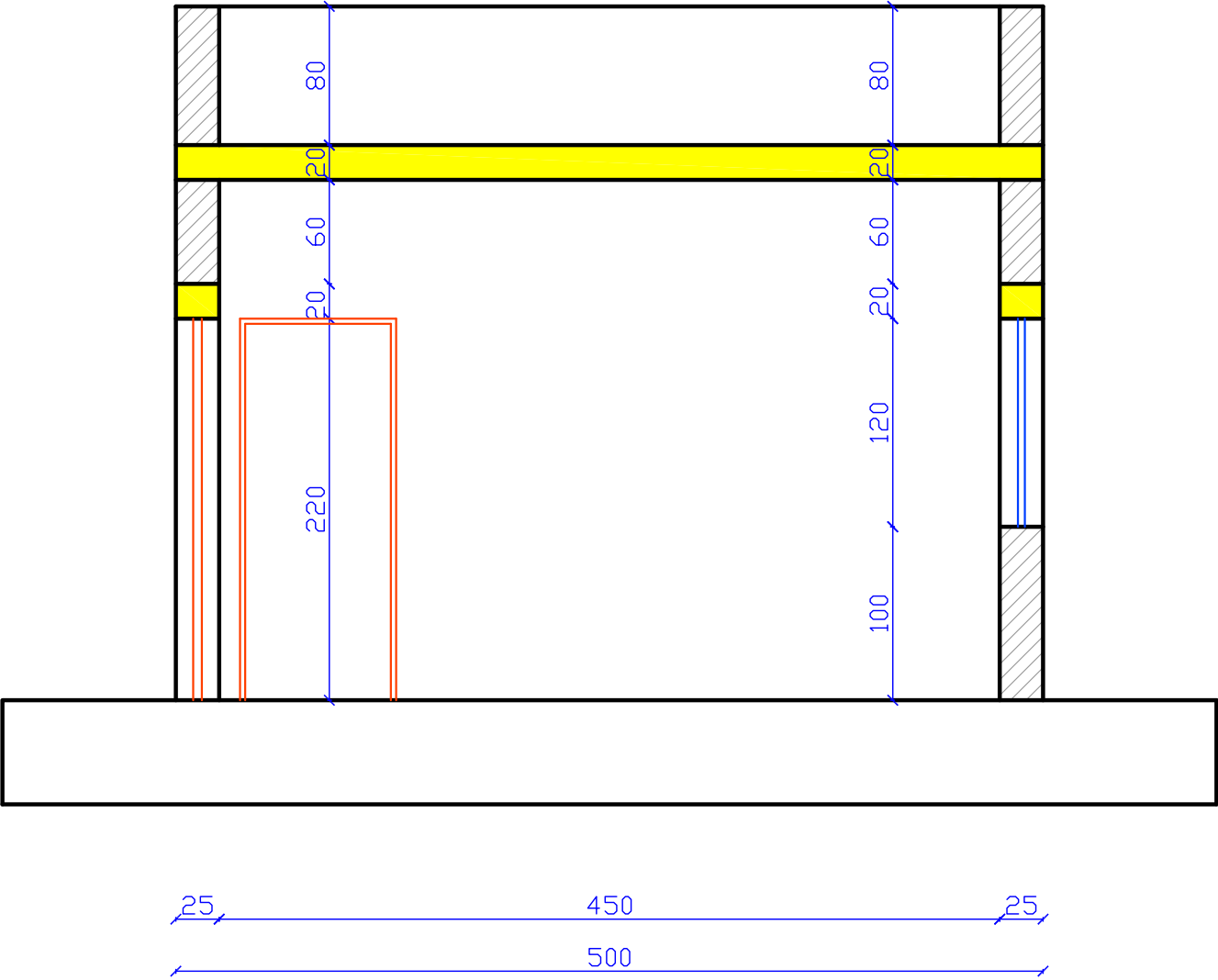
PLANIMETRY



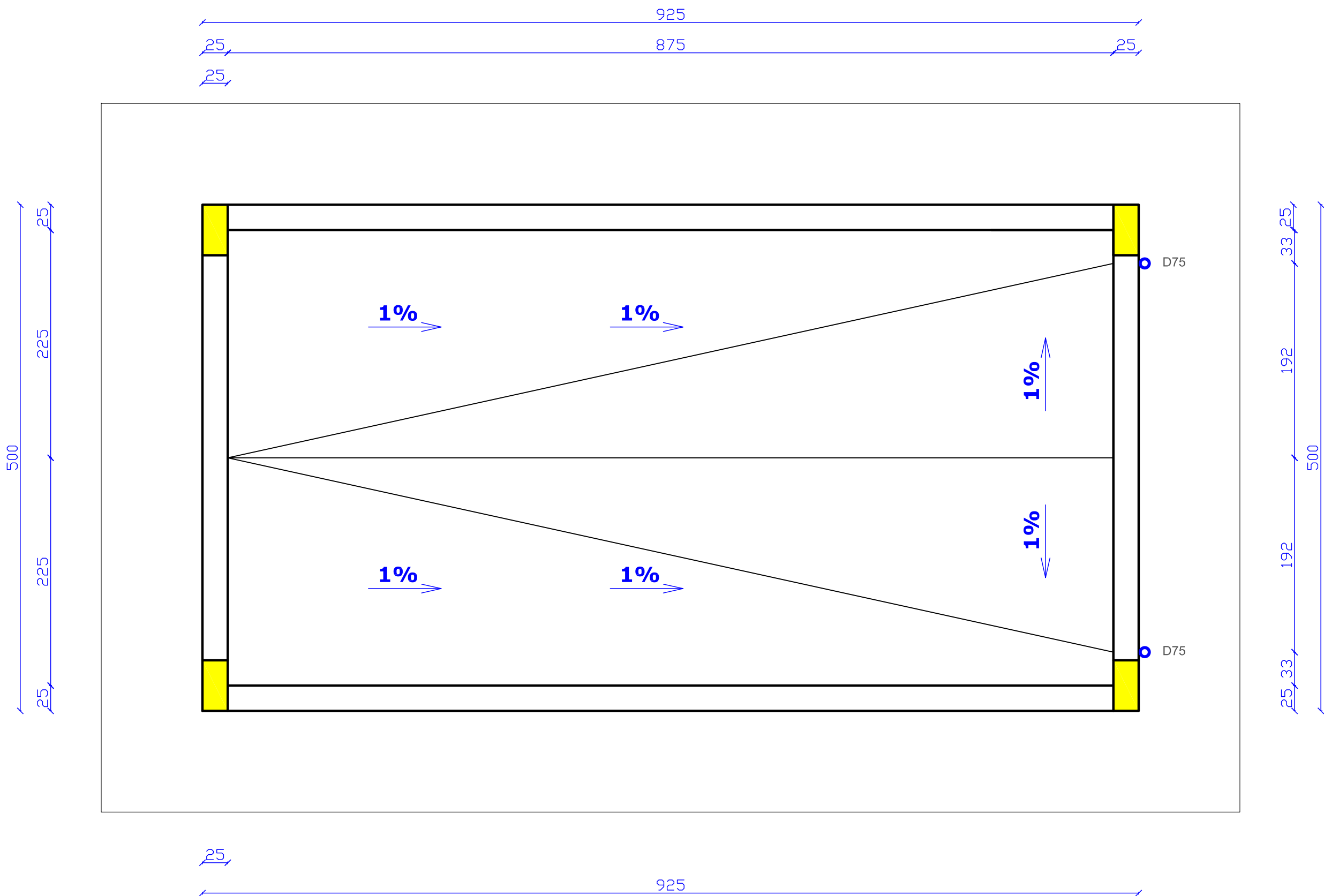
SECTION 1-1



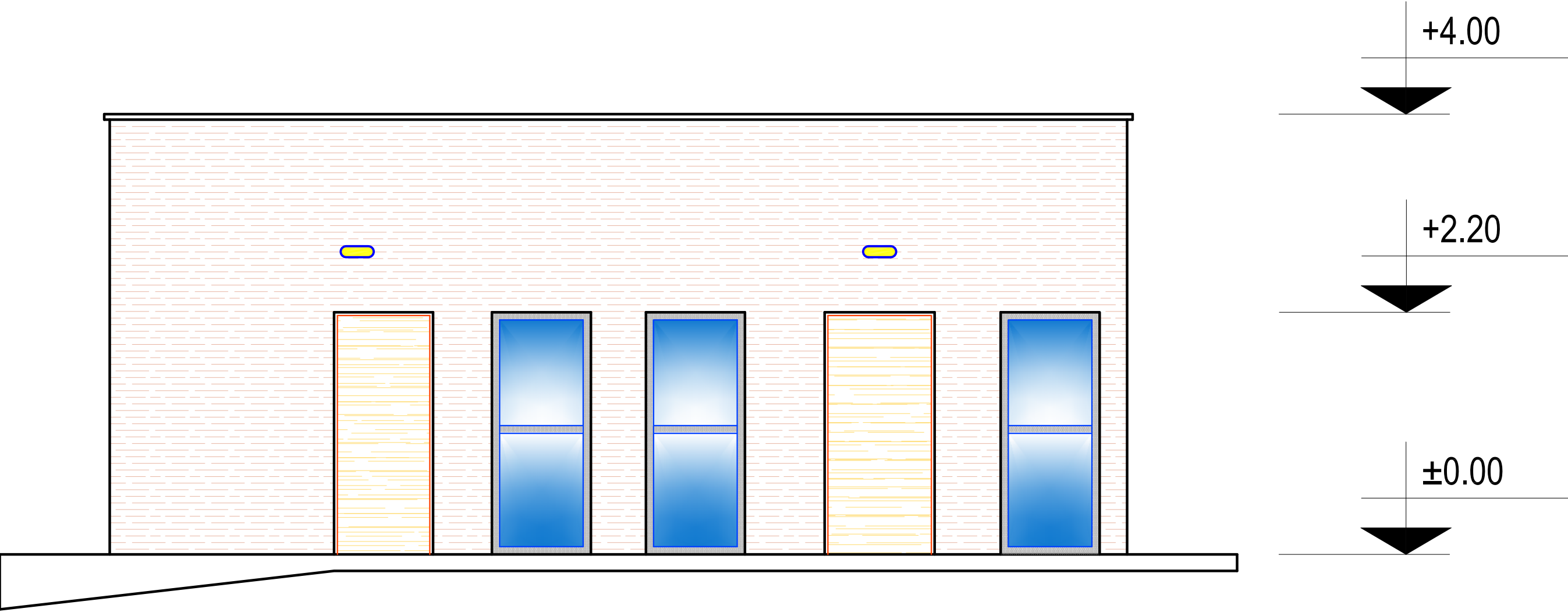
SECTION 2-2



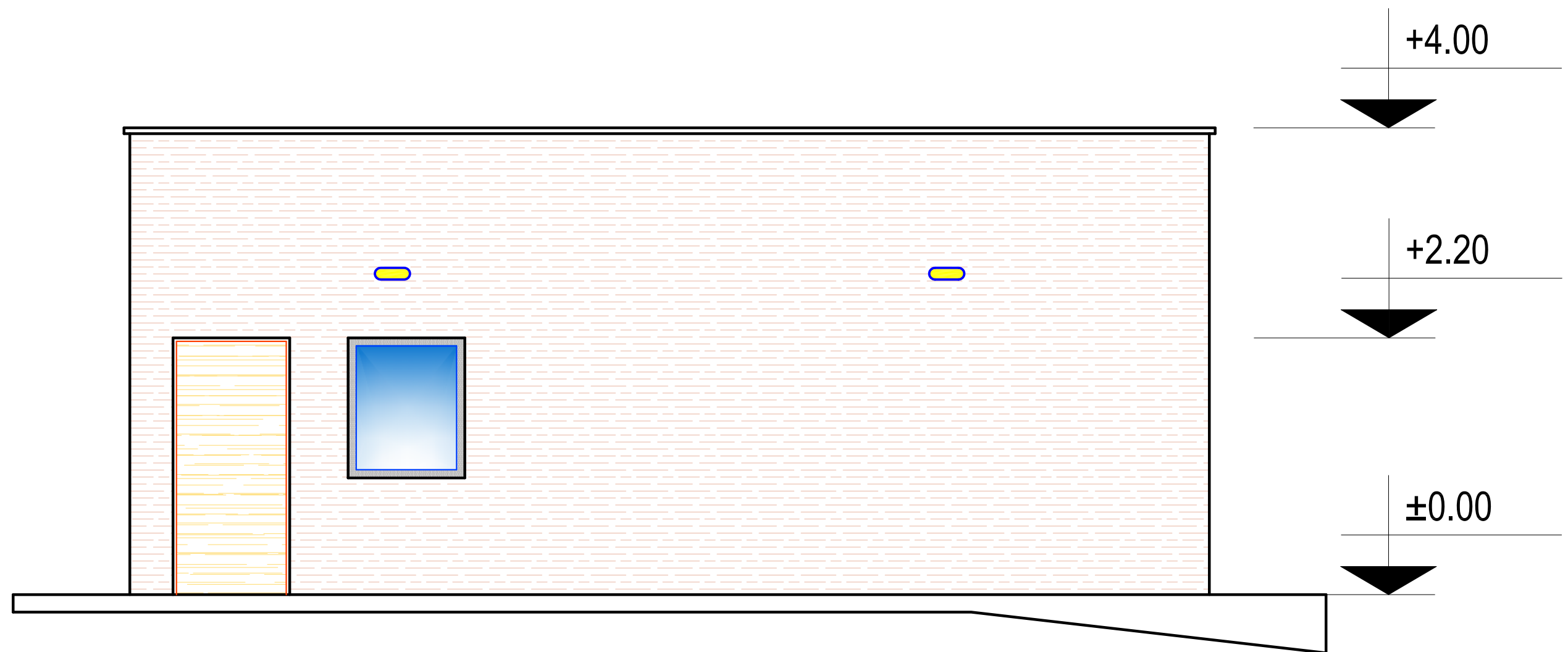
TERRACE DRAINAGE PLAN



**FRONT VIEW  
(EAST SIDE)**

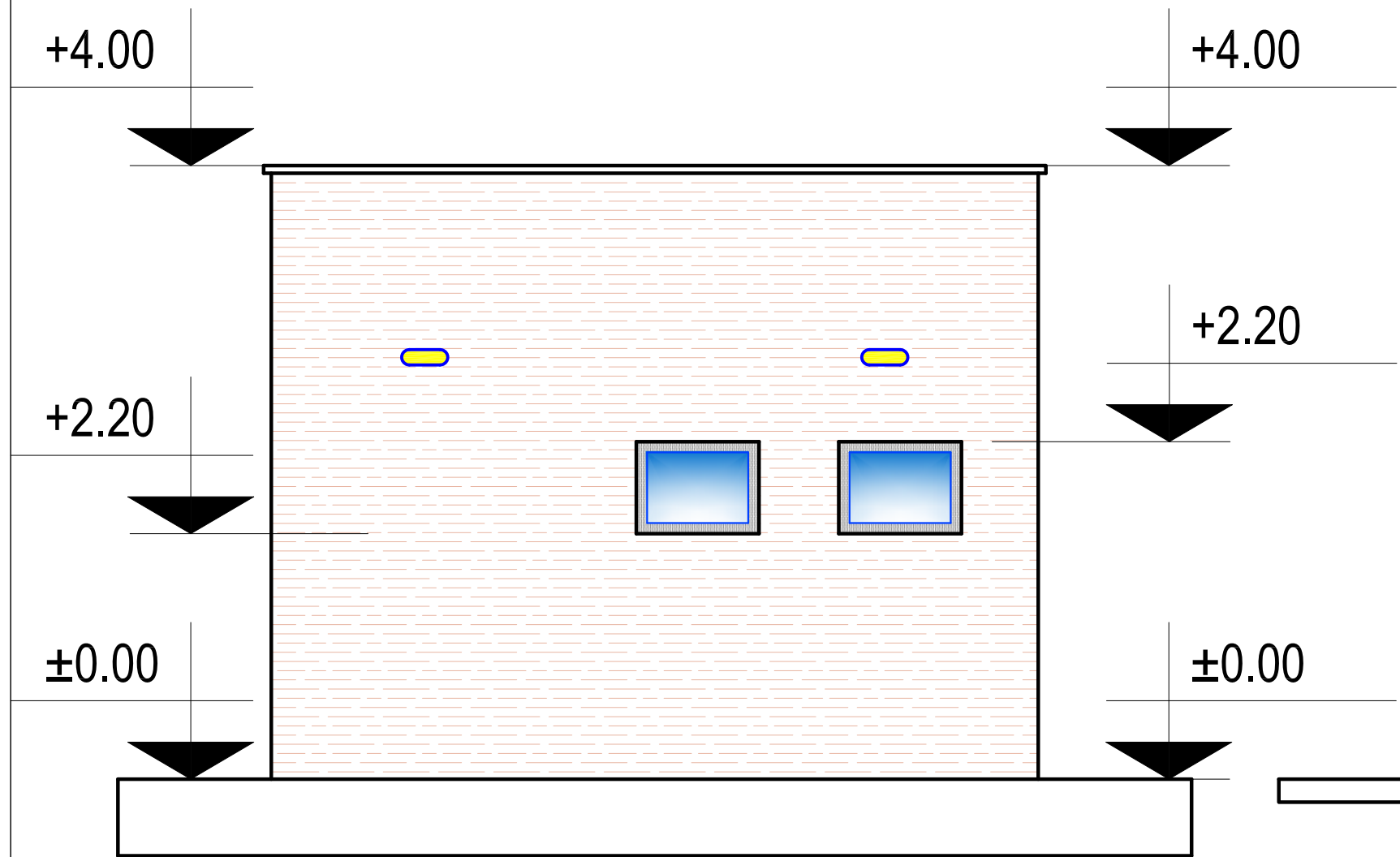


**FRONT VIEW  
(WEST SIDE)**

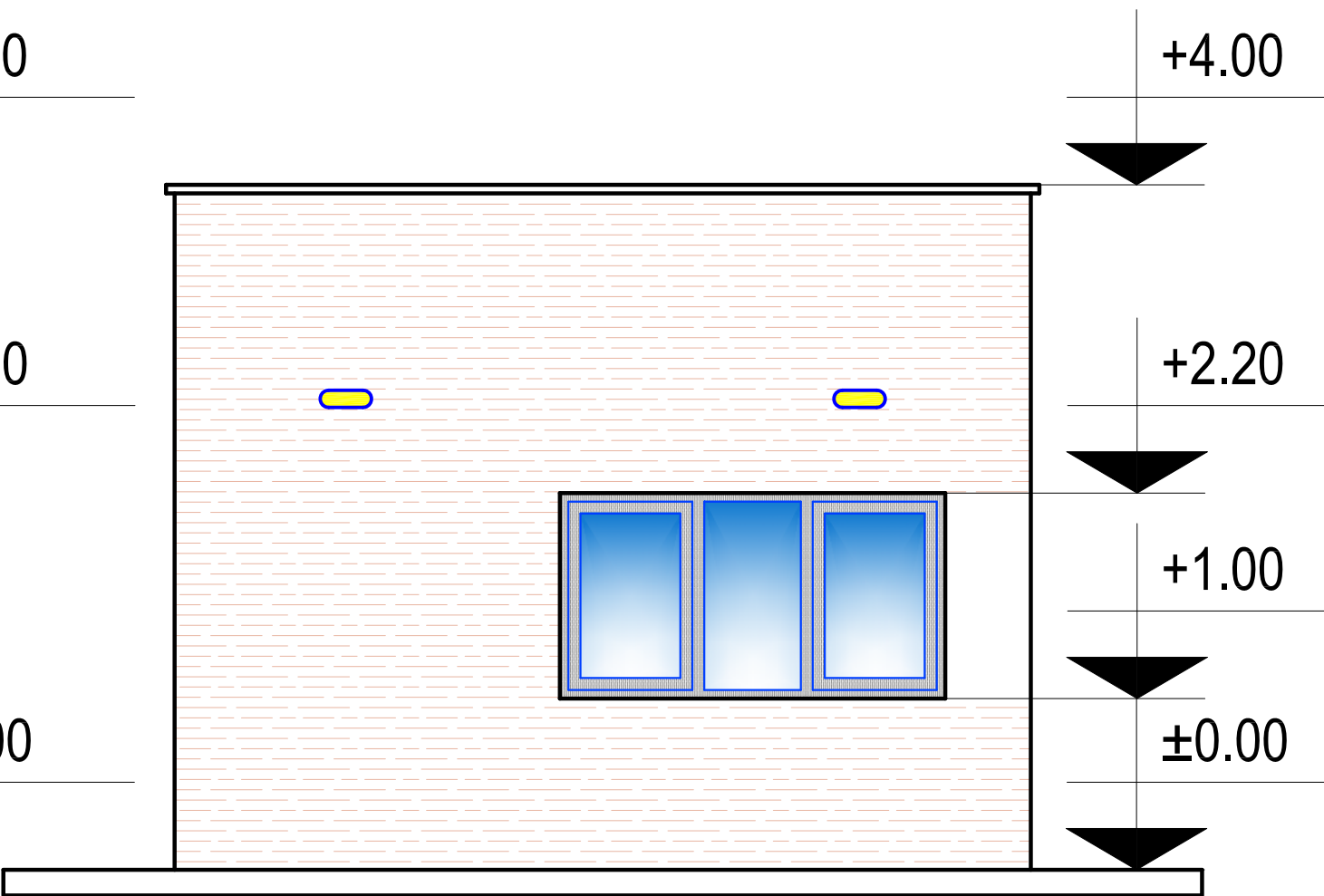




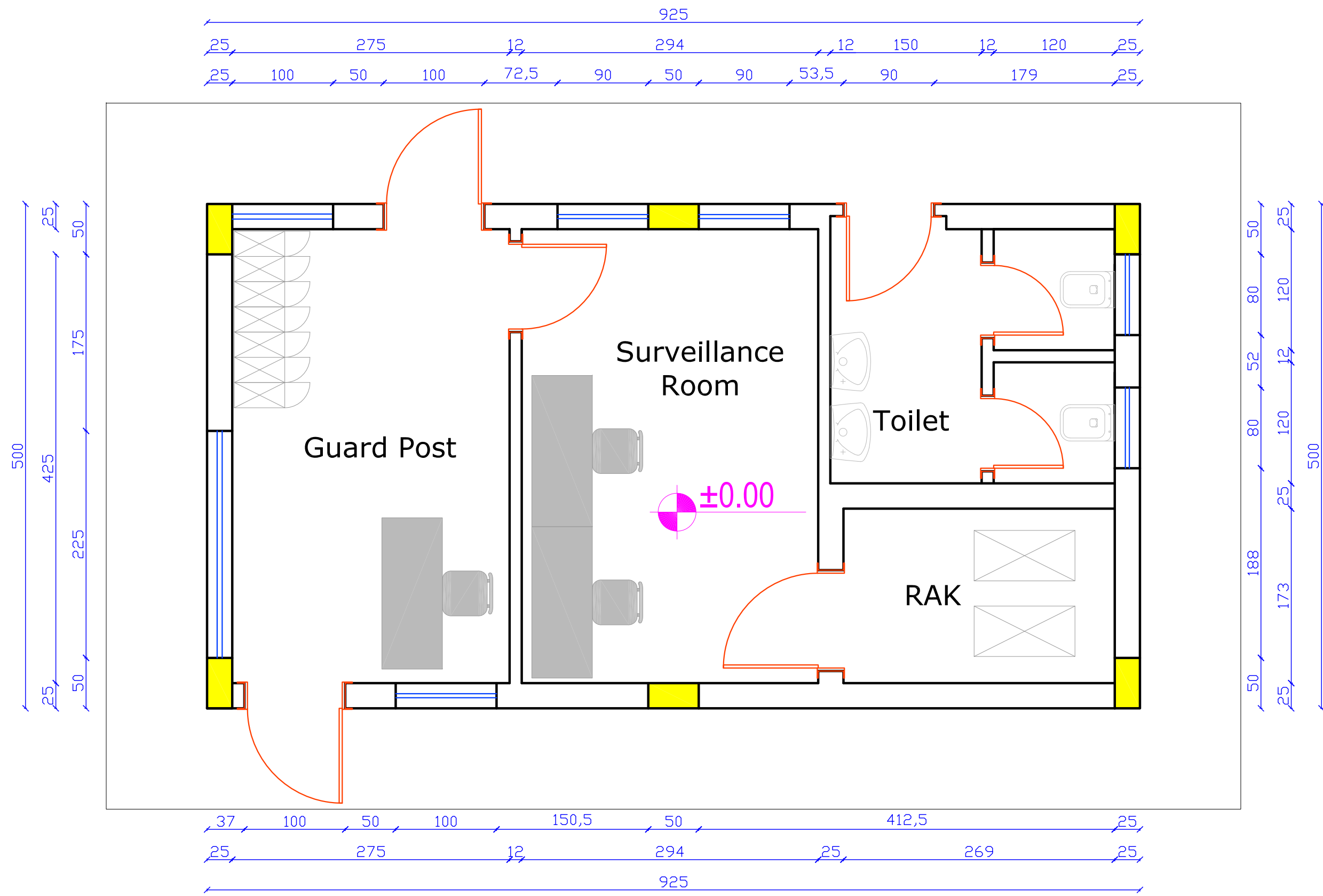
**FRONT VIEW  
(SOUTH SIDE)**



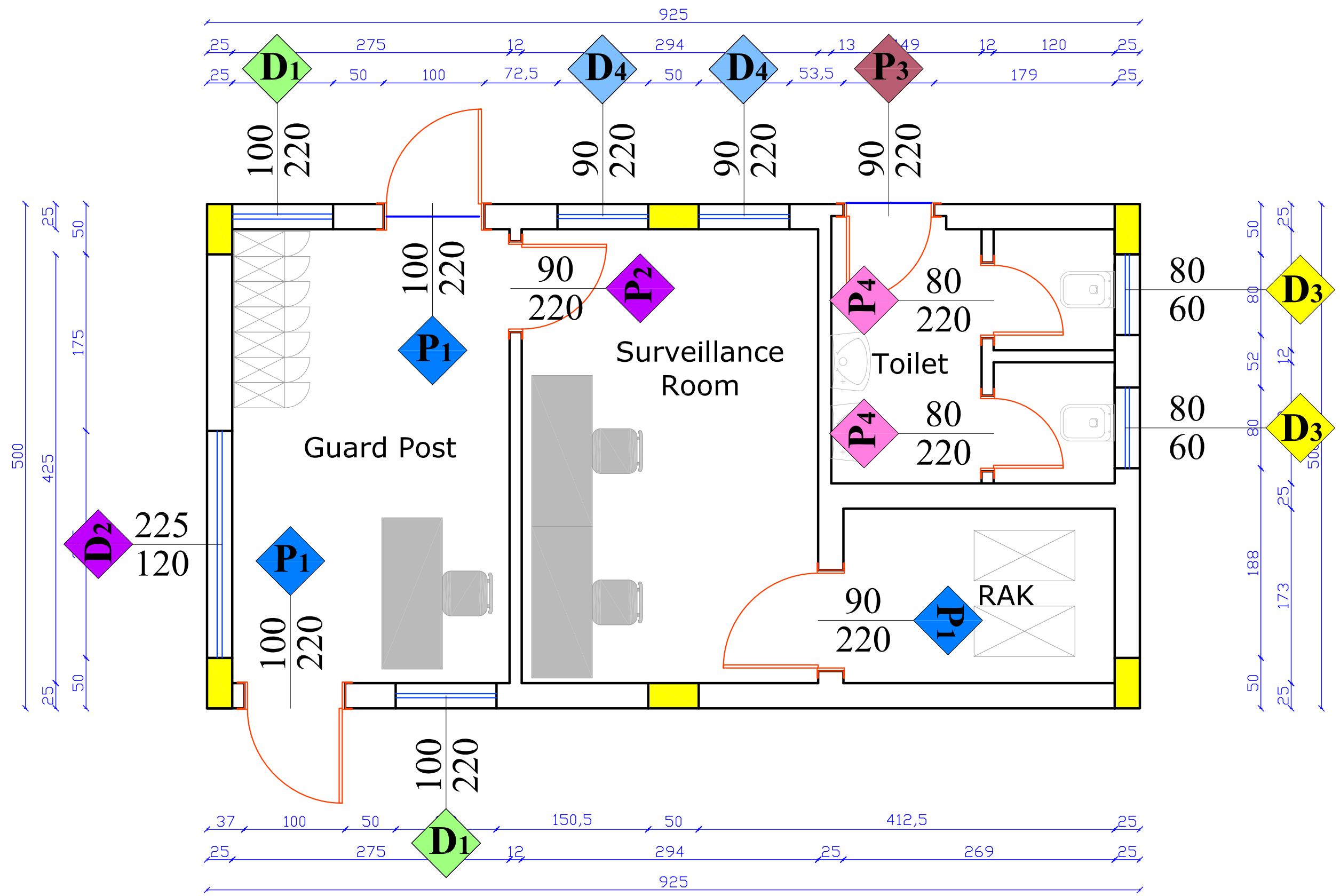
**FRONT VIEW  
(NORTH SIDE)**

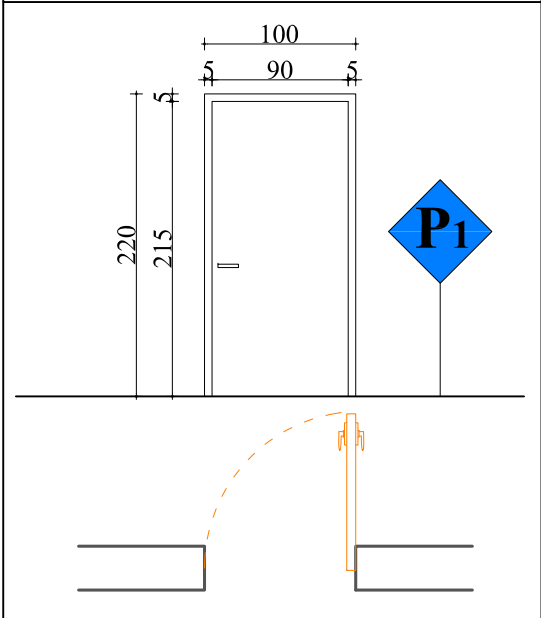
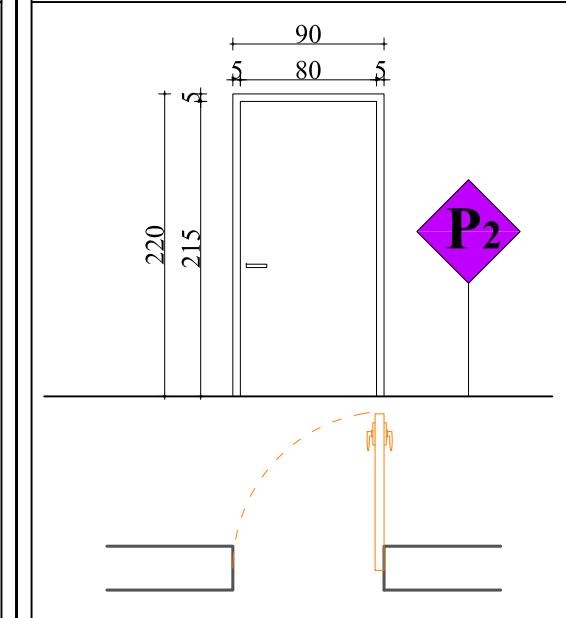
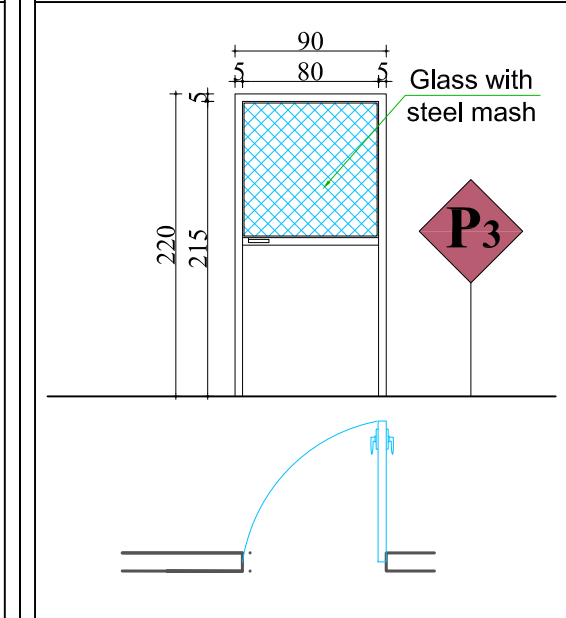
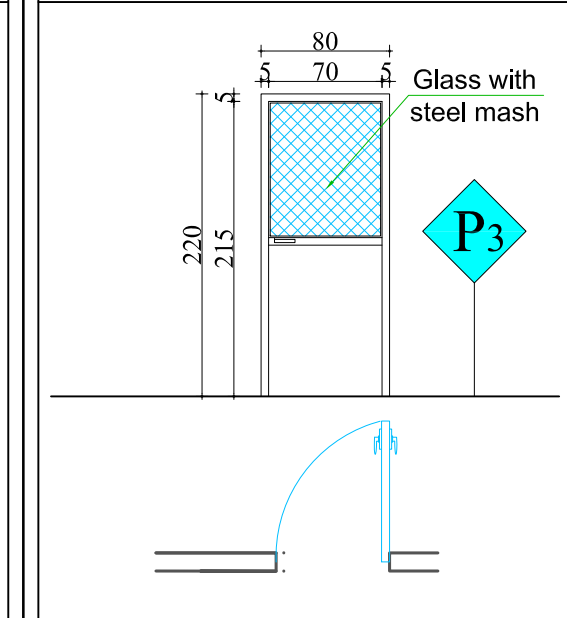


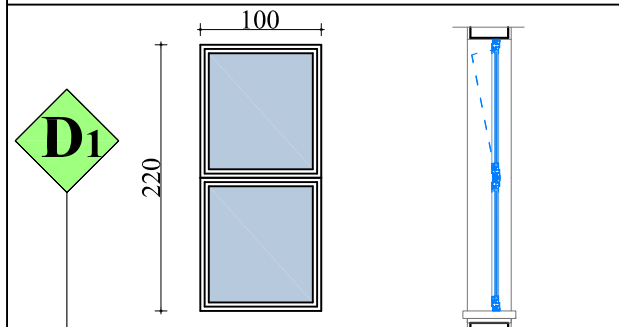
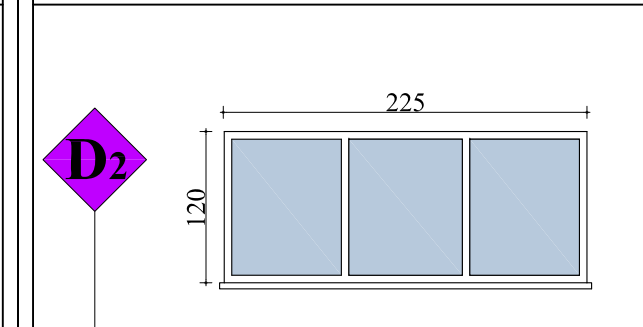
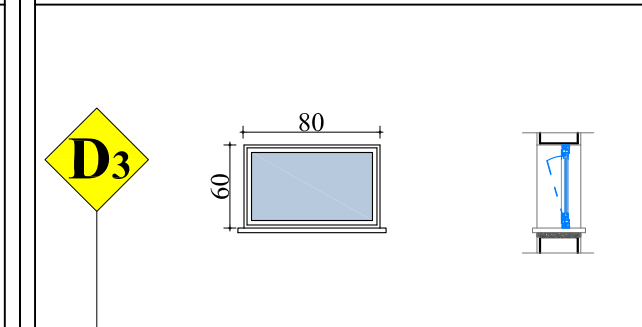
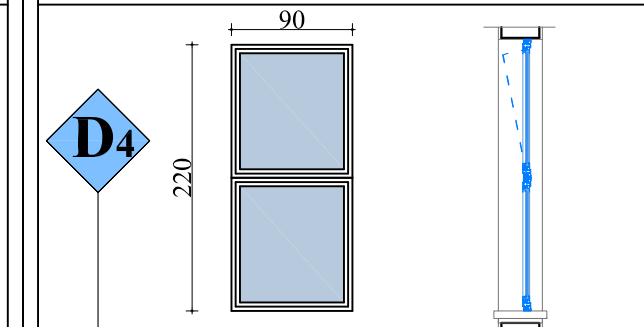
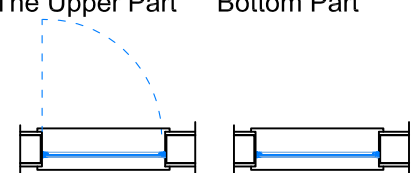
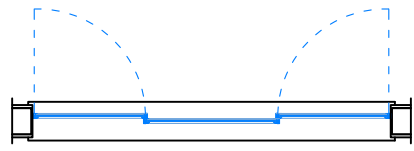
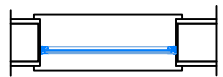
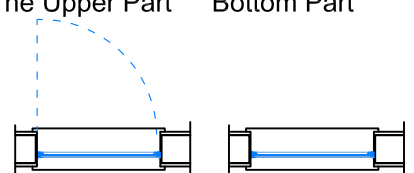
FURNITURE PLAN



**DOORS AND WINDOWS PLAN**



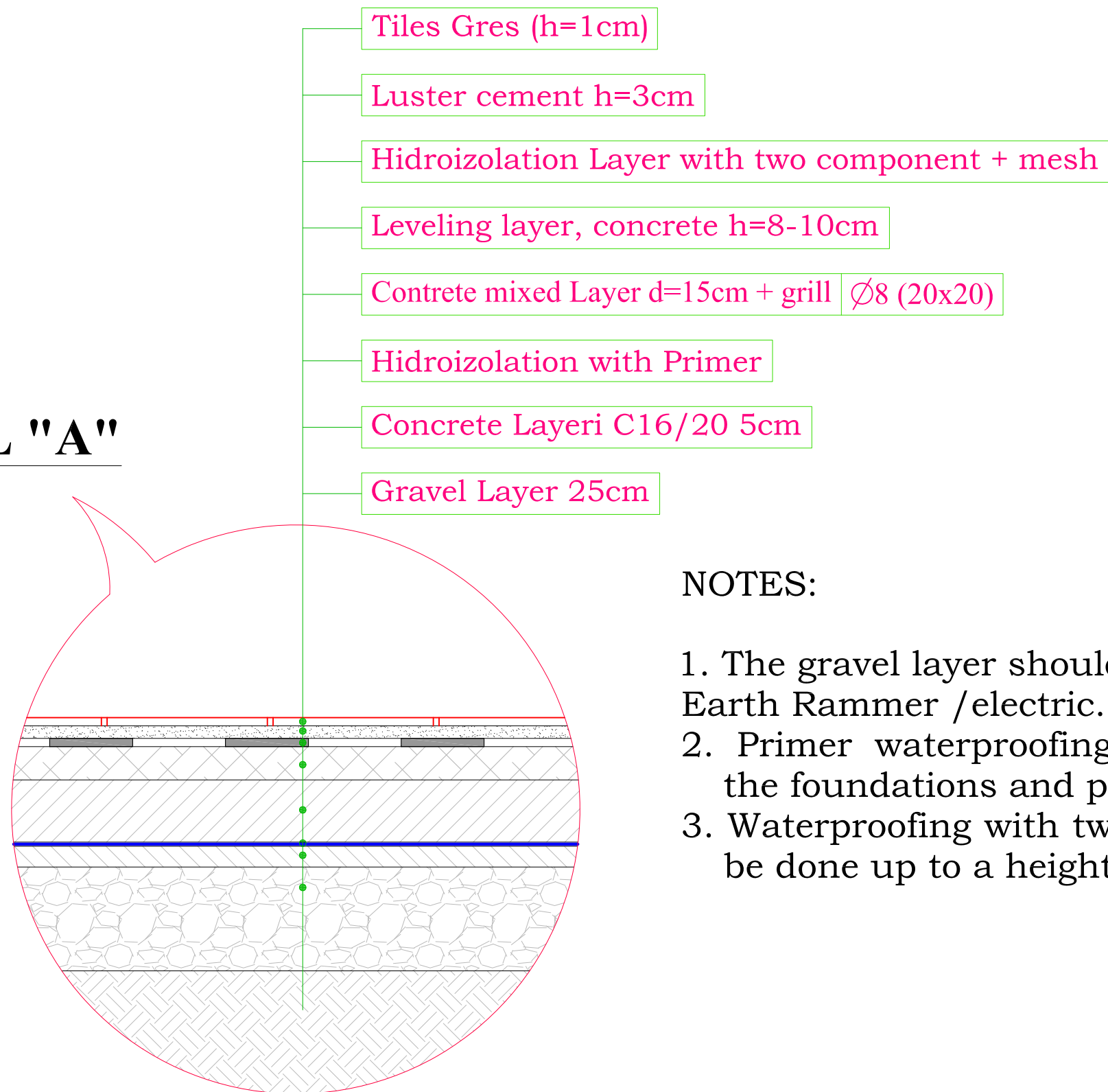
<div>P1_DOOR</div> <div>100/220</div> <div>QUANTITY</div> <div>3</div>	<div>P2_DOOR</div> <div>90/220</div> <div>QUANTITY</div> <div>1</div>	<div>P3_DOOR</div> <div>90/220</div> <div>QUANTITY</div> <div>1</div>	<div>P4_DOOR</div> <div>80/220</div> <div>QUANTITY</div> <div>2</div>
			
<div>DIMENSIONS</div> <div>100 x 220 cm</div>	<div>DIMENSIONS</div> <div>90 x 220 cm</div>	<div>DIMENSIONS</div> <div>90 x 220 cm</div>	<div>DIMENSIONS</div> <div>80 x 220 cm</div>
<div>MATERIALS</div> <div>SECURITY DOOR</div>	<div>MATERIALS</div> <div>MDF DOOR</div>	<div>MATERIALS</div> <div>ALUMINIUM GLASS DOOR</div>	<div>MATERIALS</div> <div>ALUMINIUM GLASS DOOR</div>

<div>D1_Window</div> <div>100/220</div> <div>QUANTITY</div> <div>2</div>	<div>D2_Window</div> <div>225/120</div> <div>QUANTITY</div> <div>1</div>	<div>D3_Window</div> <div>80/60</div> <div>QUANTITY</div> <div>2</div>	<div>D4_Window</div> <div>90/220</div> <div>QUANTITY</div> <div>2</div>
			
<div>The Upper Part</div> <div>Bottom Part</div> 			<div>The Upper Part</div> <div>Bottom Part</div> 
<div>DIMENSIONS</div> <div>100 x 220 cm</div>	<div>DIMENSIONS</div> <div>225 x 220 cm</div>	<div>DIMENSIONS</div> <div>80 x 60 cm</div>	<div>DIMENSIONS</div> <div>90 x 220 cm</div>
<div>MATERIALS</div> <div>ALUMINIUM DOBLEGLASS</div>	<div>MATERIALS</div> <div>ALUMINIUM DOBLEGLASS</div>	<div>MATERIALS</div> <div>ALUMINIUM DOBLEGLASS</div>	<div>MATERIALS</div> <div>ALUMINIUM DOBLEGLASS</div>

# DETAIL OF TOILET PAVEMENT LAYERS

Sc 1:50

## DETAIL "A"



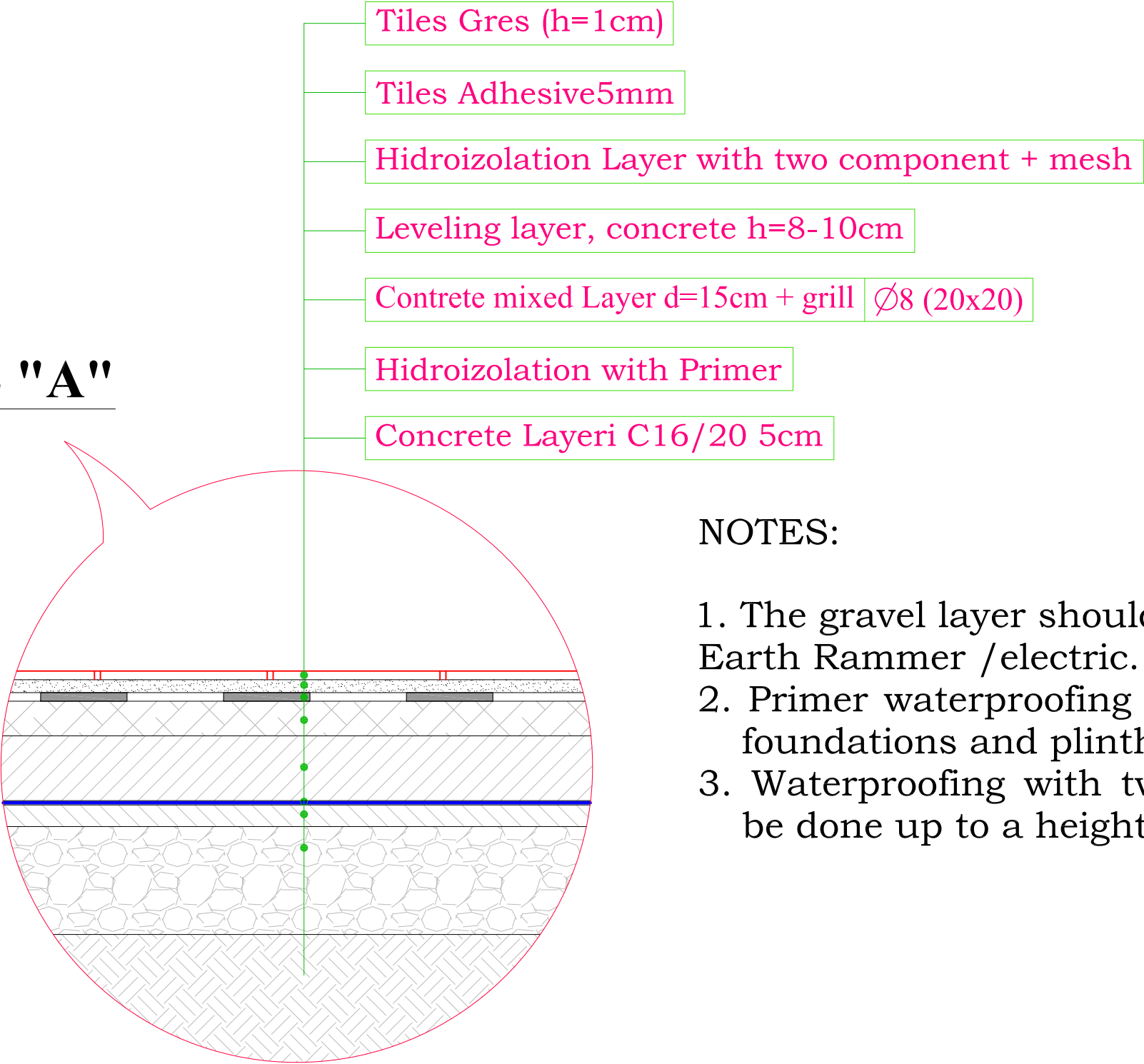
### NOTES:

1. The gravel layer should be compacted with Earth Rammer /electric.
2. Primer waterproofing should be done on the foundations and plinths
3. Waterproofing with two components should be done up to a height of 1m from the floor.

# DETAIL OF PAVEMENT LAYERS

## SH 1:50

### DETAIL "A"

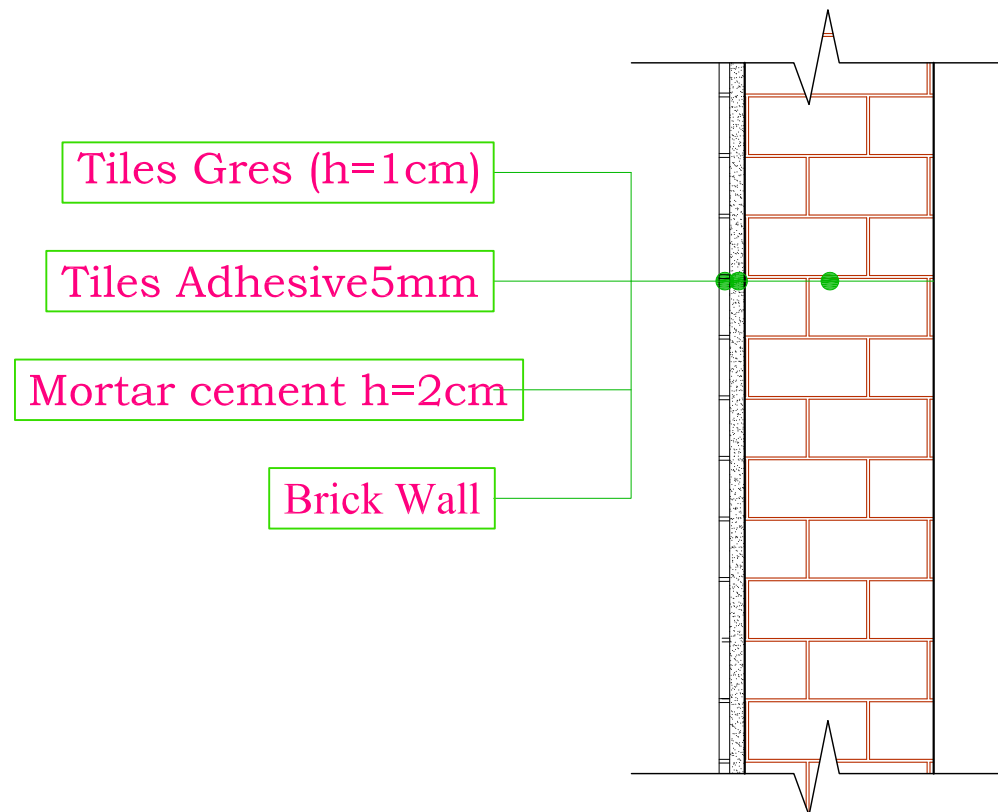


#### NOTES:

1. The gravel layer should be compacted with Earth Rammer /electric.
2. Primer waterproofing should be done on the foundations and plinths
3. Waterproofing with two components should be done up to a height of 1m from the floor.

## DETAIL OF TOILET WALLS LAYERS

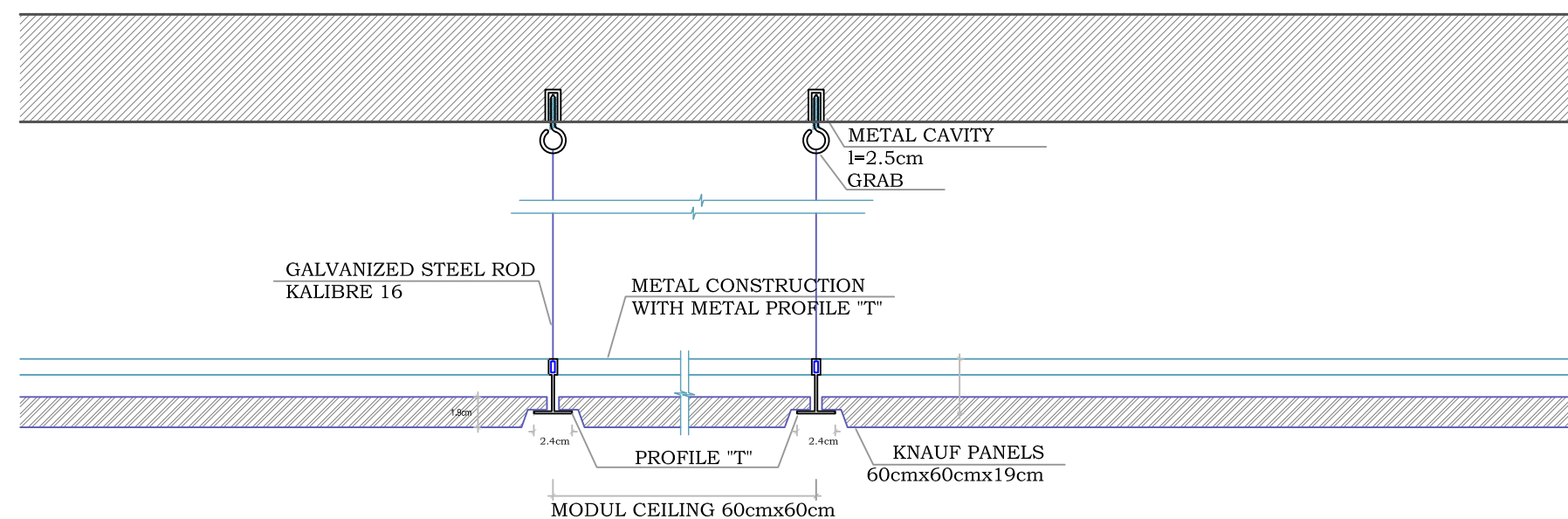
Sc 1:50



### NOTES:

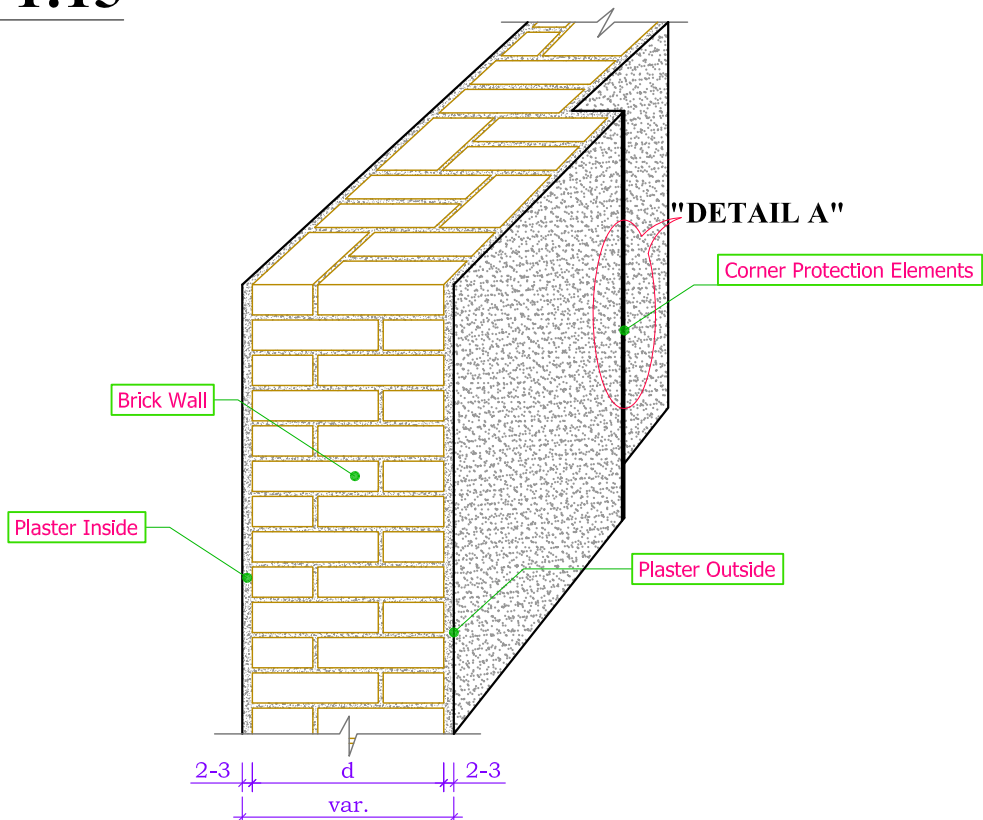
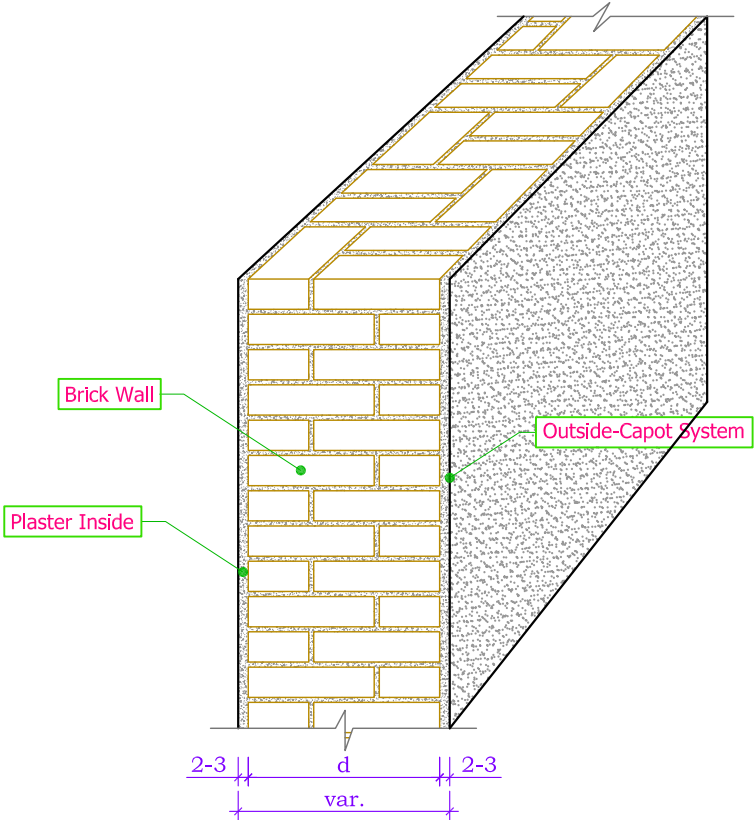
1. The bandages will be placed before the realization of the mortar layer.
2. Plastering will be done
3. Tiles adhesive will be used to fix the tiles.

## DETAILS OF SUSPENDED CEILING

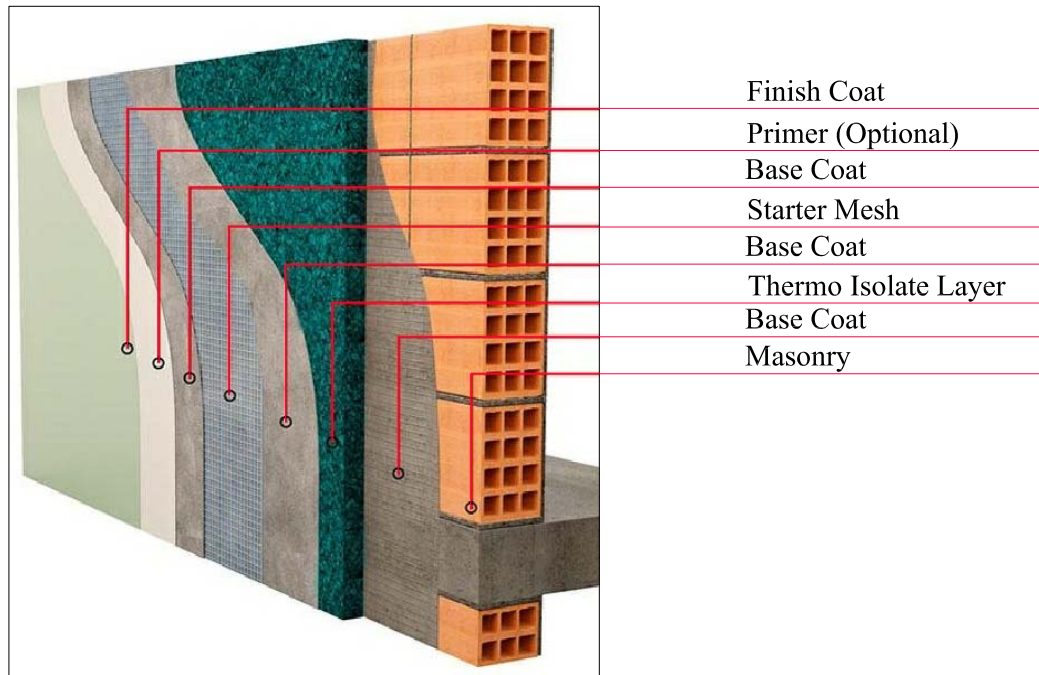


# DETAILS OF PLASTERING LAYERS

Sc 1:15



## CAPOTE SYSTEM DETAILS

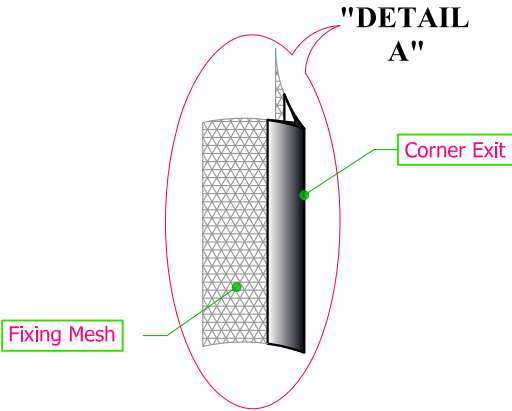


### NOTES:

When making plaster, it should be reminded that:

1. The bandages will be placed before the plaster filling is done. The distance between the bandages should be taken according as, so that the surface of each part is covered. In the respective detail, the thickness of the plaster 2-3cm is orienting. Its thickness will be obtained according to the fact by referring to the leading bandages of the filling.
2. The layer of fino plaster will be realized after the curing period of the plaster filling. The appropriate deadline for the realization of the fino layer will be determined by the Supervisor of Works. The layer of normal finos or finish coat, will be taken according to the technical drawings attached to the project.
3. In cases where we have a corner exit of the masonry, placed the corner protective elements during the plaster filling layer, the price of which is included in the plaster price (see the relevant details)
4. On the outside there will be covered with capote system.
5. The whole intervention process, quoted above, will be developed according to the instructions and recommendations of the Object Supervisor.

## CORNER DETAILS



### NOTES:

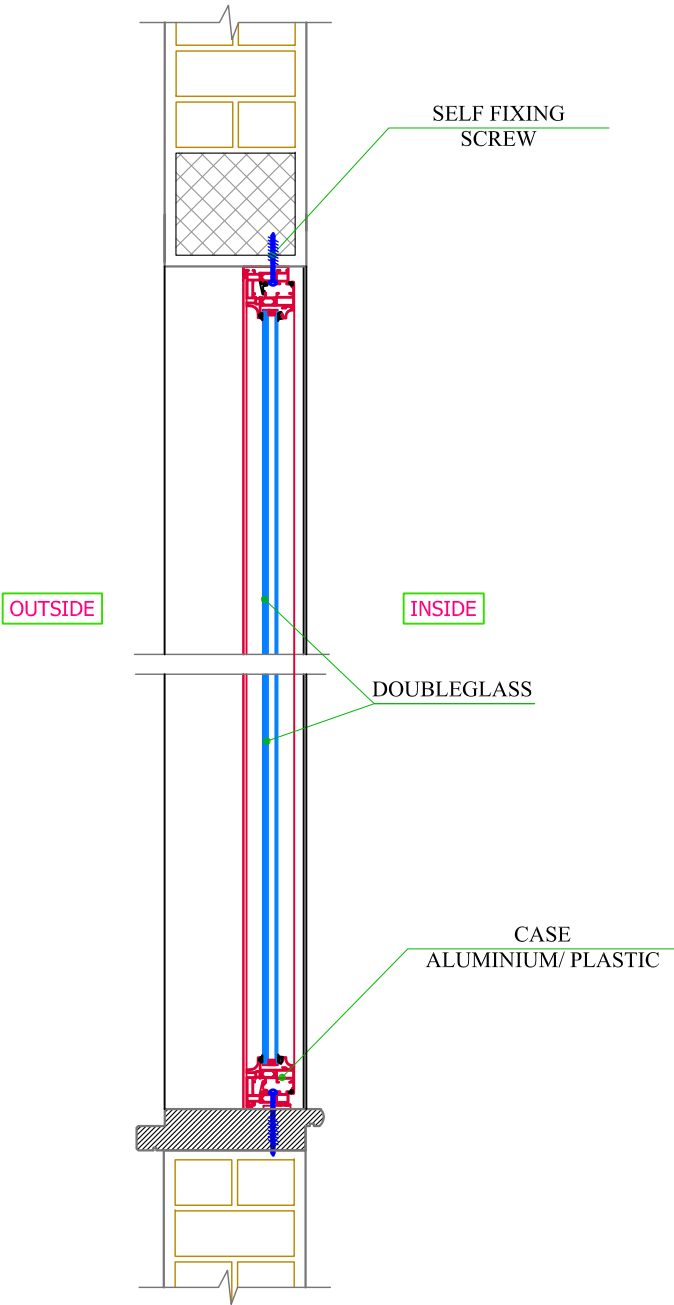
During the realization of the plaster should be placed "corner protection elements" in the corner exit of the masonry. For the placement of these protective elements, it should be reminded that:

1. Placement of "corner protection elements" during the plaster filling stage. Fixing of these elements is achieved by immersion in plaster of the respective fixing mesh. When placing them, care must be taken to position them correctly, taking into account that the corner part is exactly at the top of the corner.
2. Covering with the fino layer and leaving out only the "top" of its corner part. The total coverage of the "corner element" is categorically prohibited.
3. The placement of these elements will be only the corners which are exposed to any possible damage. For the other corners, it is enough to make corner breaks with simple plaster.
4. The whole intervention process, quoted above, will be developed according to the instructions and recommendations of the Object Supervisor.

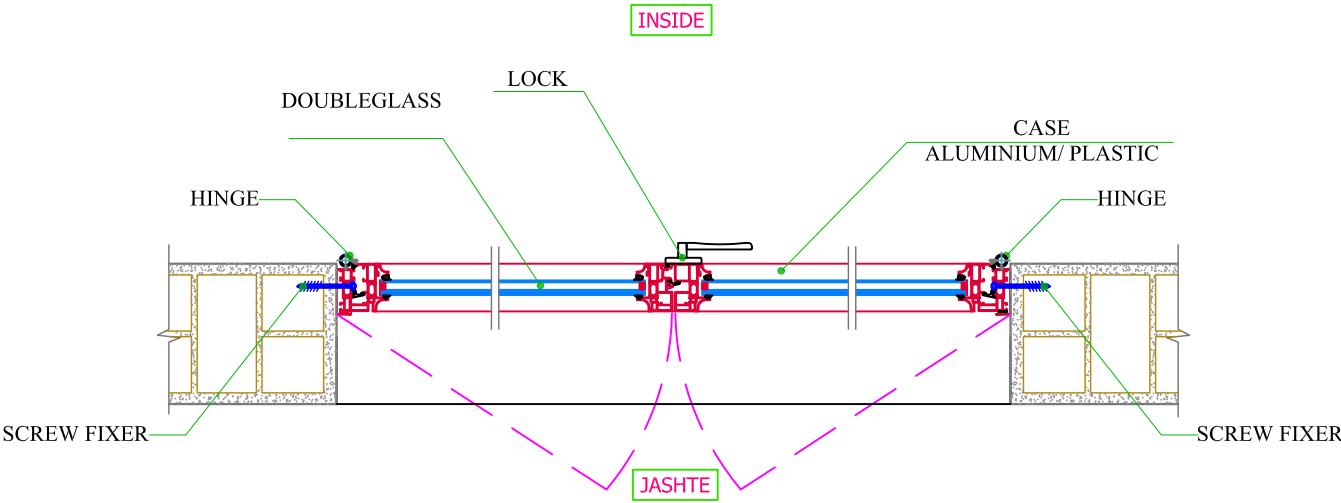


**DETAILS OF ALUMINIUM DOUBLEGLASS**  
**Sc 1:20**

**VERTICAL SECTION**



**HORIZONTAL SECTION**



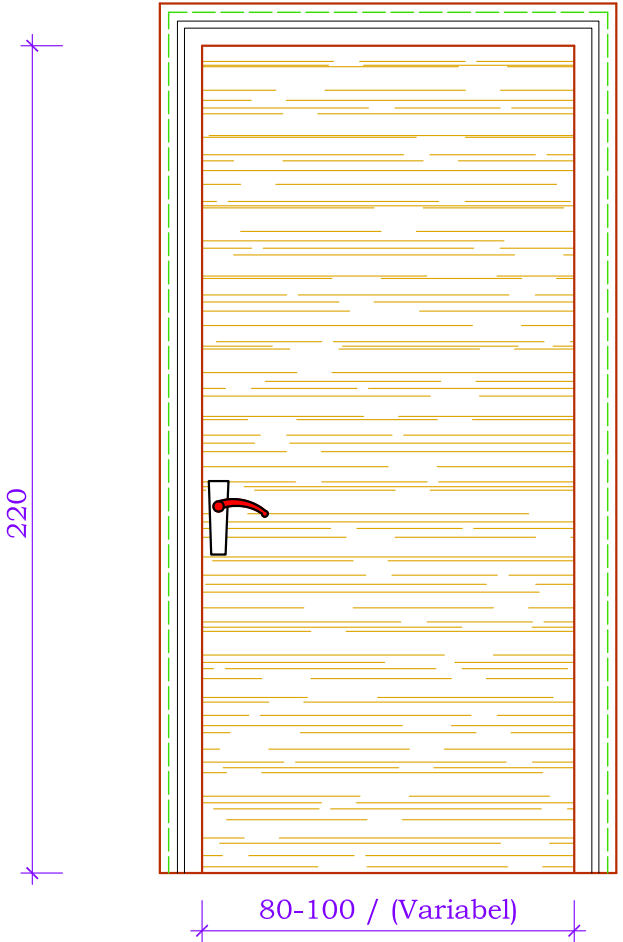
**NOTES:**

When setting up Windows, it should be reminded that:

1. Materials of the glass window will be with thermal protection.
2. The windows will be double glass with a thickness of 6mm and 4mm.
3. Fixing the Window to the part of the masonry will be done through self-fixing screws.
4. Closing the spaces after assembly should be done with foam.
5. The whole intervention process, quoted above, will be developed according to the instructions and recommendations of the Object Supervisor.

# **DETAIL OF INTERNAL DOORS** **Sc 1:20**

**INTERNAL DOOR MODEL**



## **NOTES:**

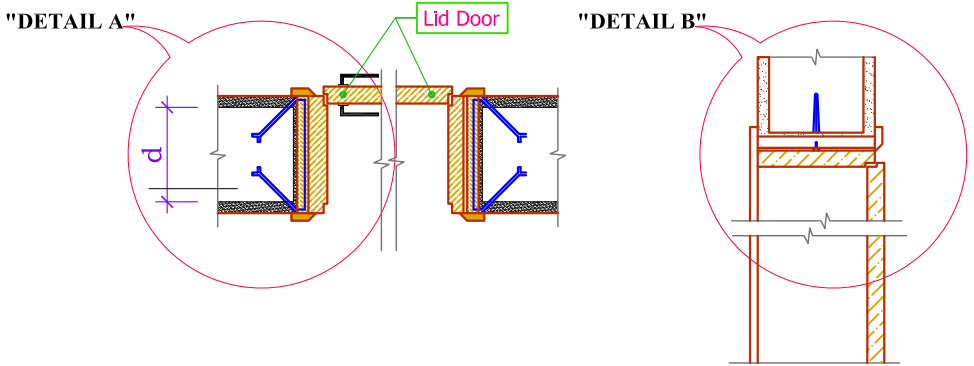
During the interventions in the replacement of the existing wooden doors, it should be reminded that:

1. Fixing the doors in the part of the masonry , will be done through self fixing screws (with anchor), according to the given detail.
2. Fill the space between the case and the wall with foam.
3. The dimensions given for the doors are the dimensions of the light space before the installation of the case.
4. The whole intervention process, quoted above, will be developed according to the instructions and recommendations of the Object Supervisor.

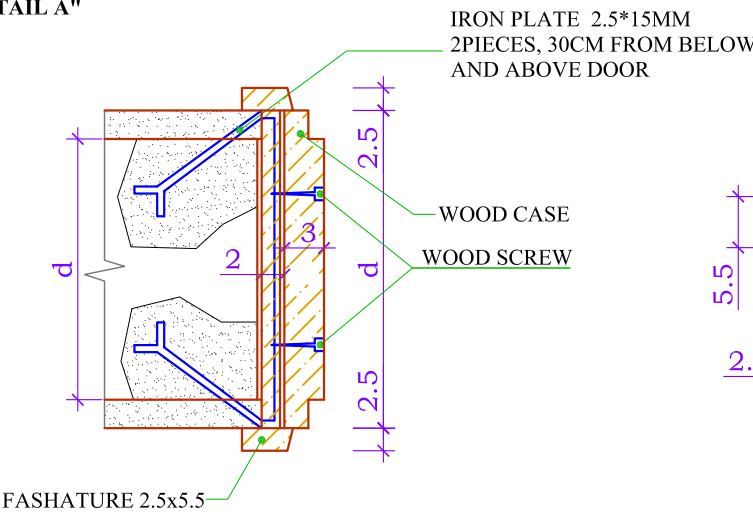
## **DETAILS OF CASE DOORS**

**HORIZONTAL SECTION**

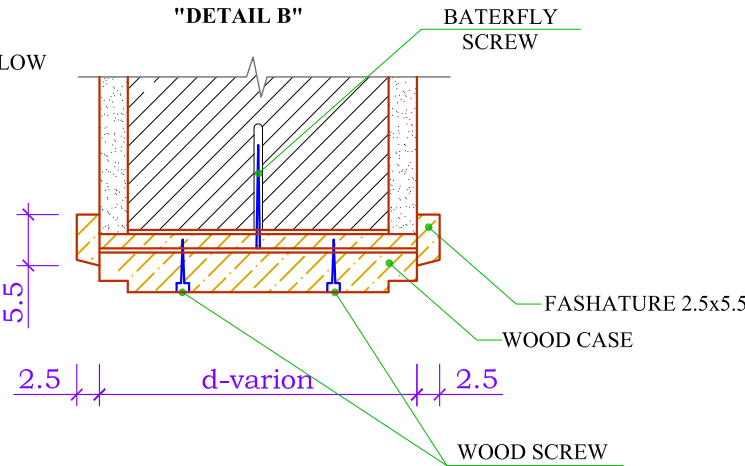
**VERTCAL SECTION**



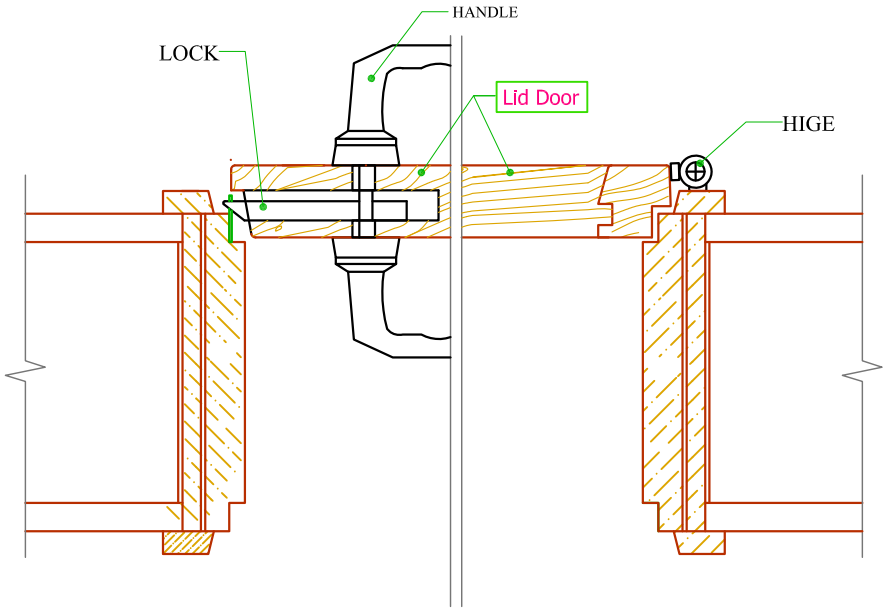
**"DETAIL A"**



**"DETAIL B"**



**DETAIL OF LID GRAB**



# **DETAILS OF TARRACE DREINAGE SYSTEM** **Sc 1:20**

