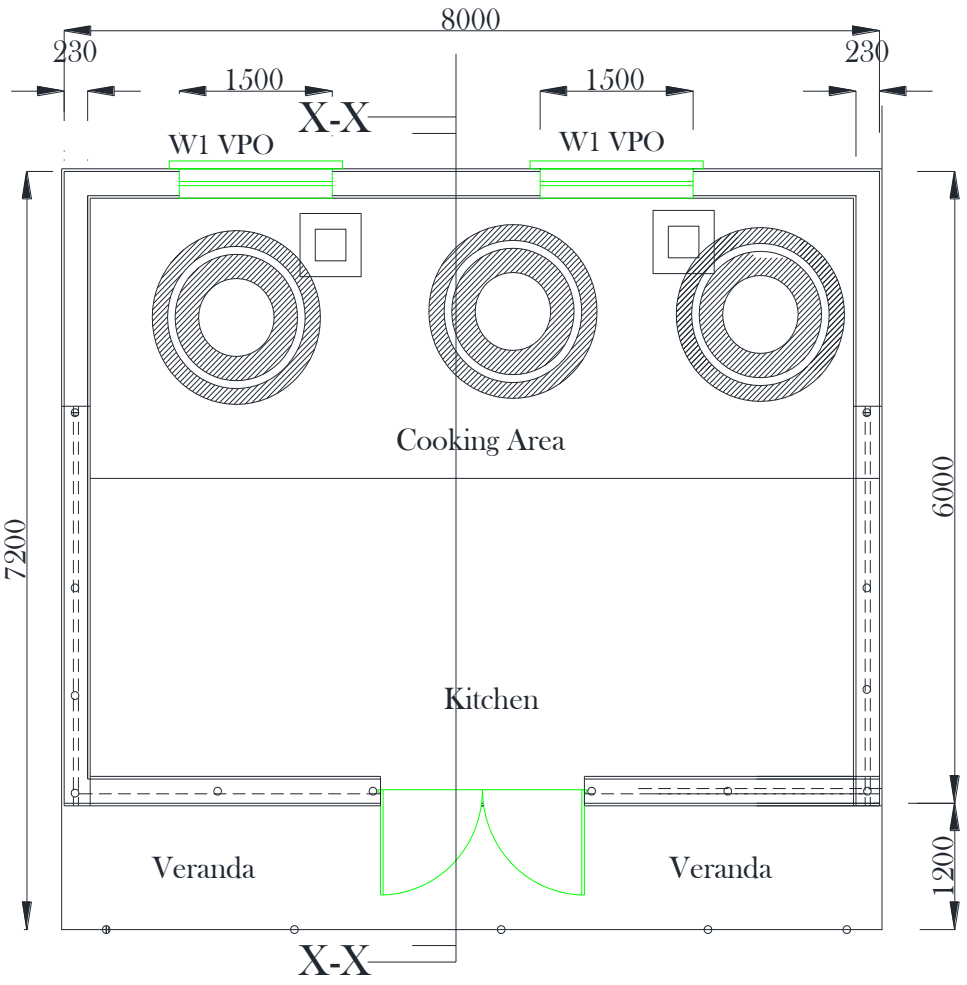
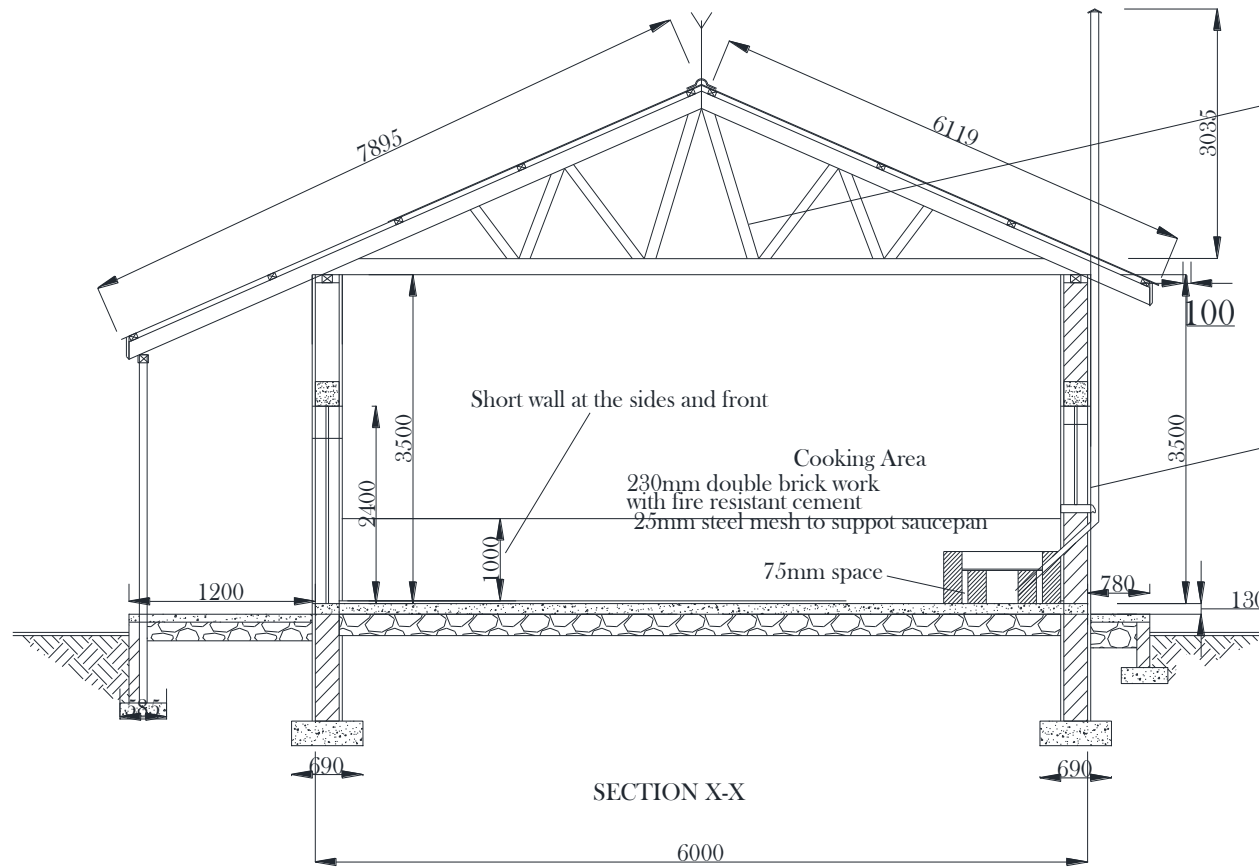


Drawing for the kitchen for Juvenile section in Aweil central prison



FOOLR PLAN



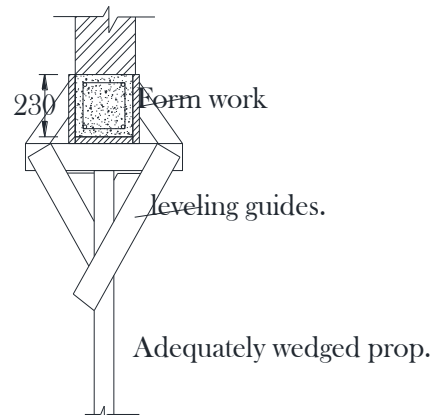
ROOFING NOTES:

Fix pre coated galvanised ridge cover on
Pre coated galv. corrugated iron sheets on
60x40x3mm roofing purlins on,
60x40x3mm principle rafters,
60x40x3mm tie beam,
60x40x3mm struts and ties
80x50x3mm wall plate

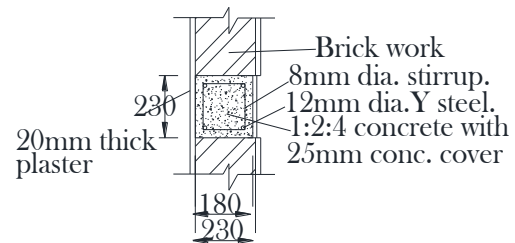
Chimney construction to details
4mm circular metallic chimney vent

SUBSTRUCTURE NOTES:

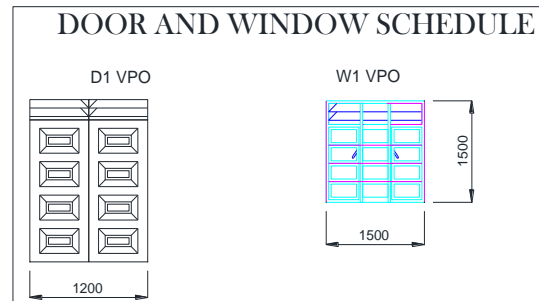
25mm cement sand screed (1:3) on
100mm site concrete (1:3:6) on
230mm hard core on compacted gravel,
690mmx230mm strip foundations (1:3:6).
concrete mix.
Foundation depth to be determined on site



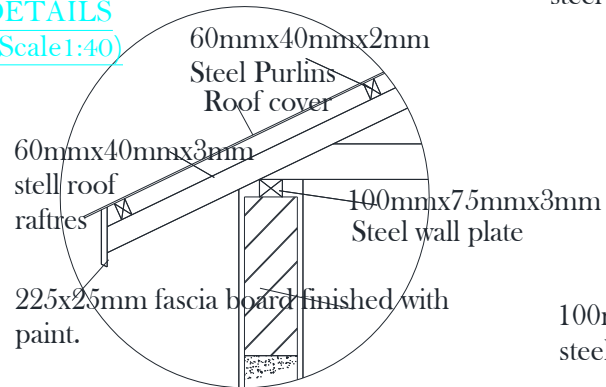
DETAIL AT OPENINGS.



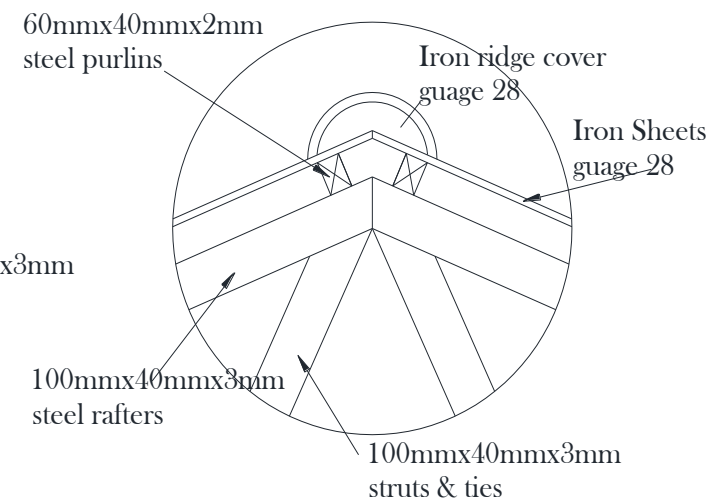
RING BEAM DETAIL

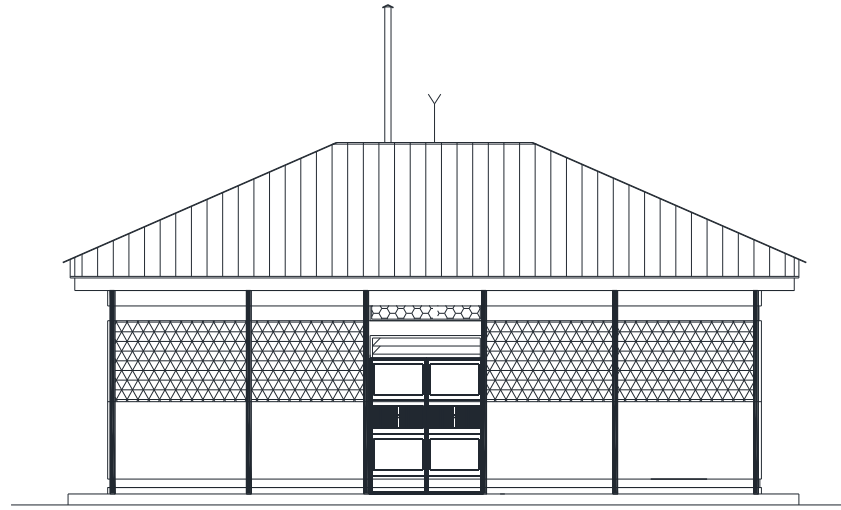


WALL PLATE
DETAILS
(Scale 1:40)

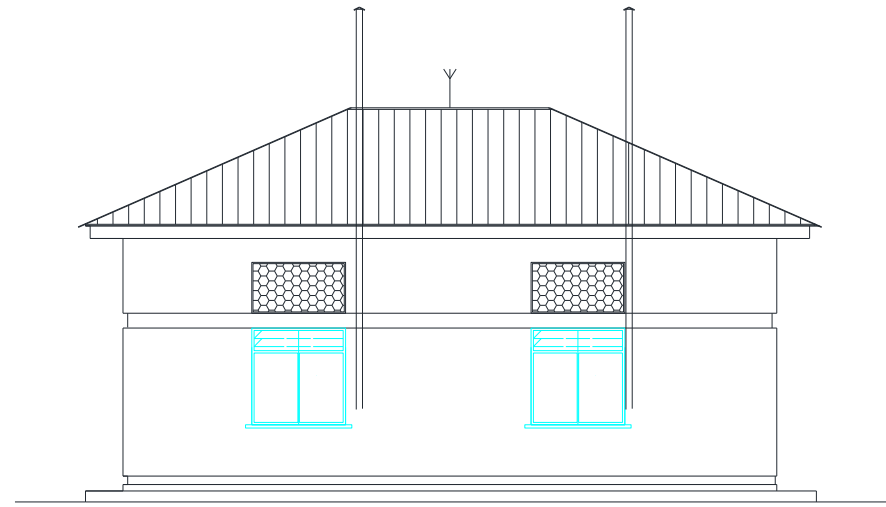


RIDGE DETAILS
(Scale 1:20)

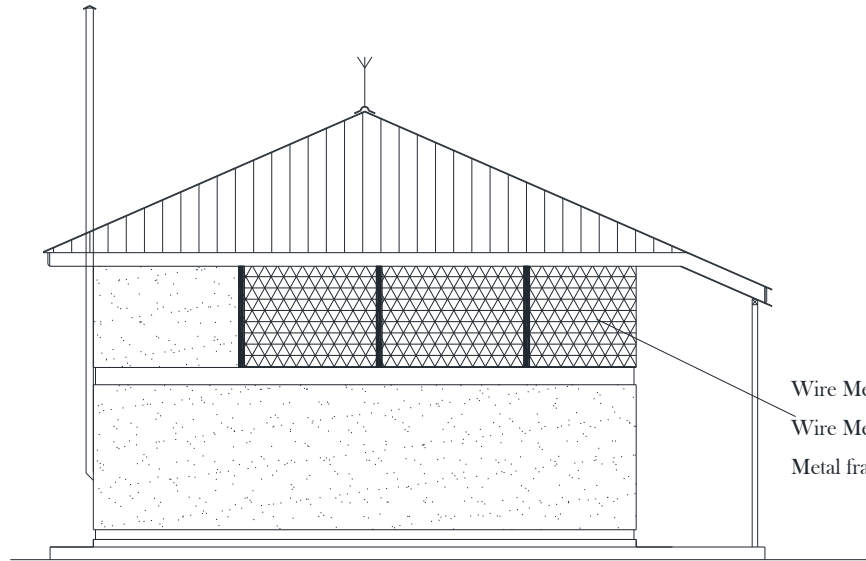




FRONT ELEVATION

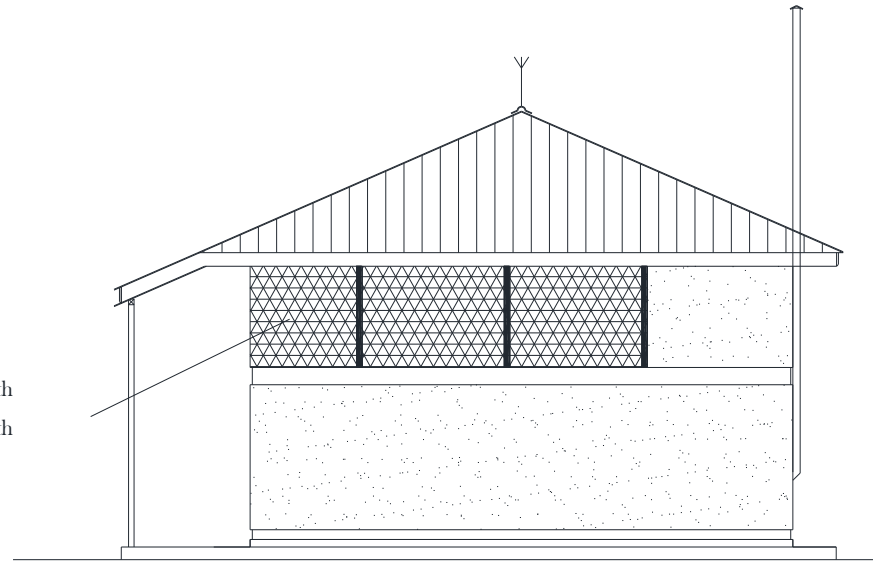


REAR ELEVATION



LEFT ELEVATION

Wire Mesh with
Wire Mesh with
Metal frames



RIGHT ELEVATION