

# Prototype Police Post



*Empowered lives.  
Resilient nations.*

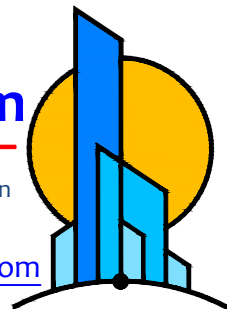
May 2020

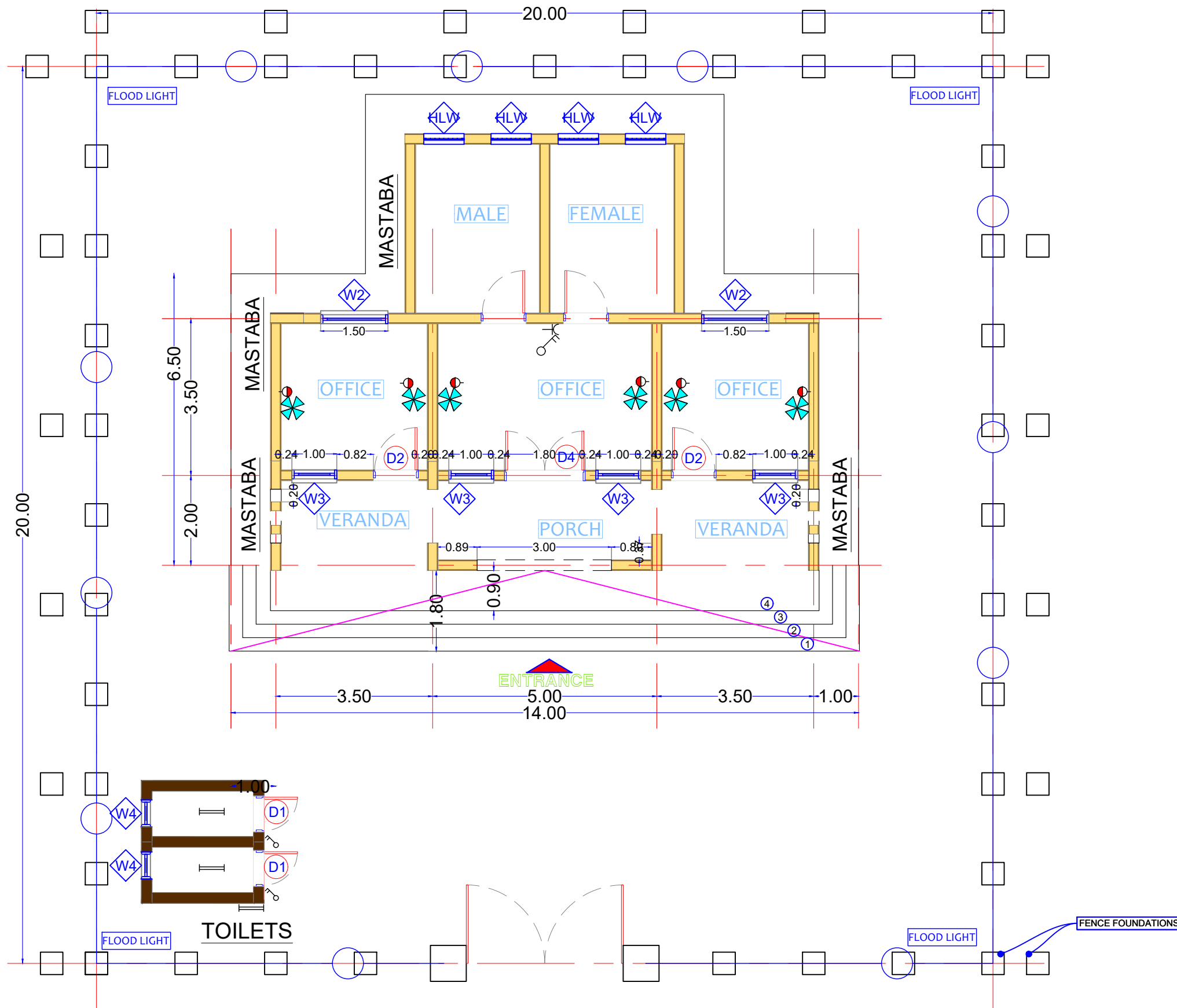
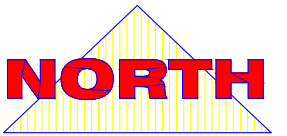
**Bahauddin Ibrahim**  
ENGINEERING

Project Management | Design | Supervision

+249 9 123 3 1958

[bahauddin.engineering@gmail.com](mailto:bahauddin.engineering@gmail.com)





# Master Plan

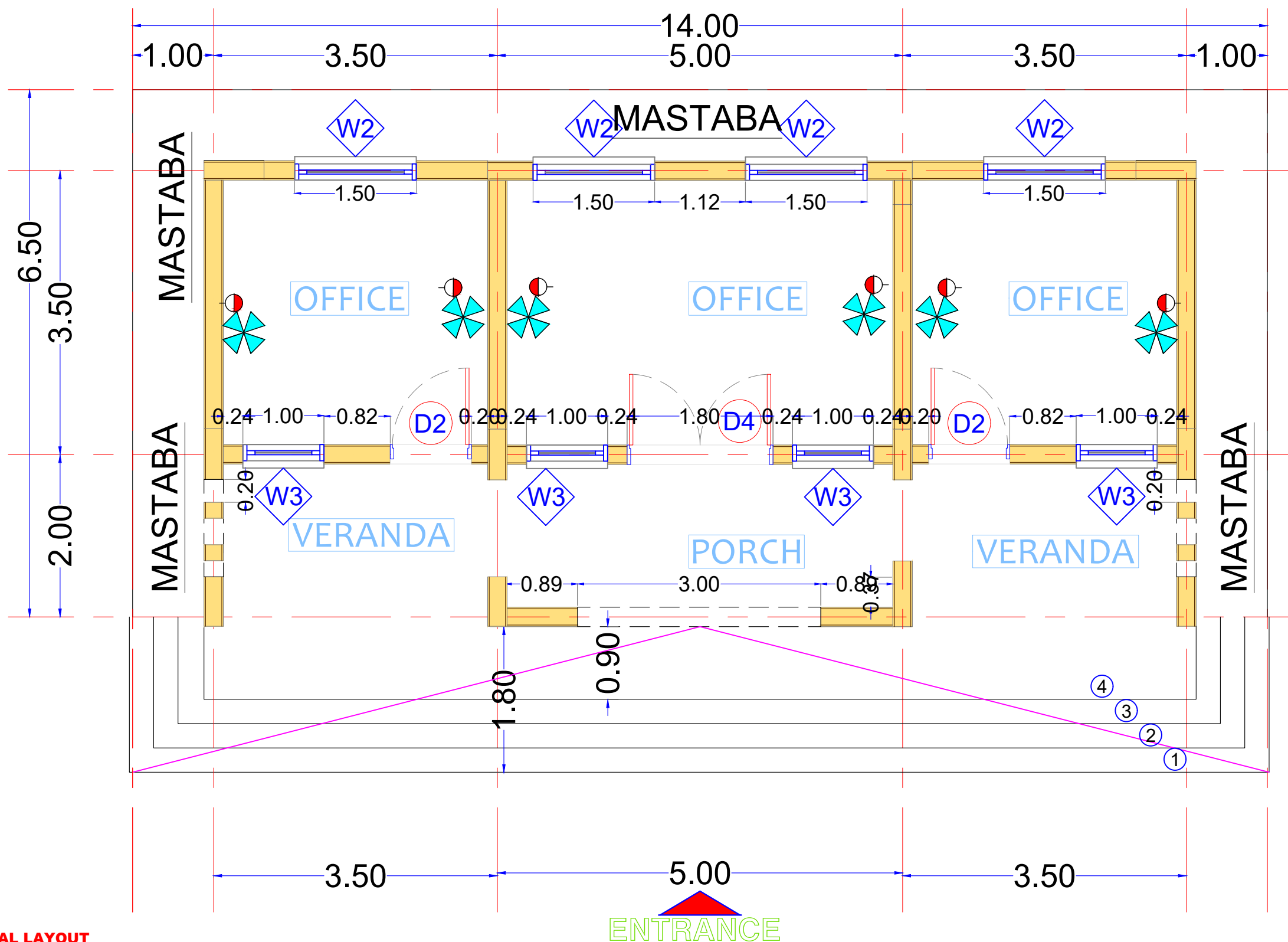
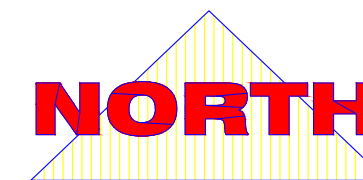
Scale 1:100 A3

Design by:  
**Bahauddin Ibrahim**  
ENGINEERING  
Project Management | Design | Supervision  
+249 9 123 3 1958  
bahauddin.engineering@gmail.com

Master Plan

2020

A0



**ELECTRICAL LAYOUT**  
**Main Building**

Design by:  
**Bahauddin Ibrahim**  
ENGINEERING  
Project Management | Design | Supervision  
+249 9 123 3 1958  
[bahauddin.engineering@gmail.com](mailto:bahauddin.engineering@gmail.com)

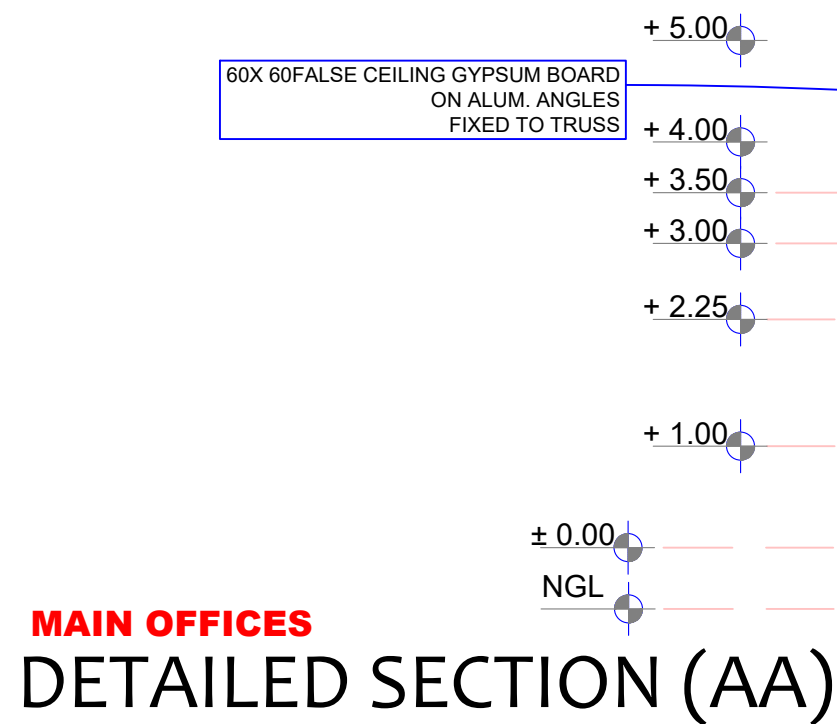
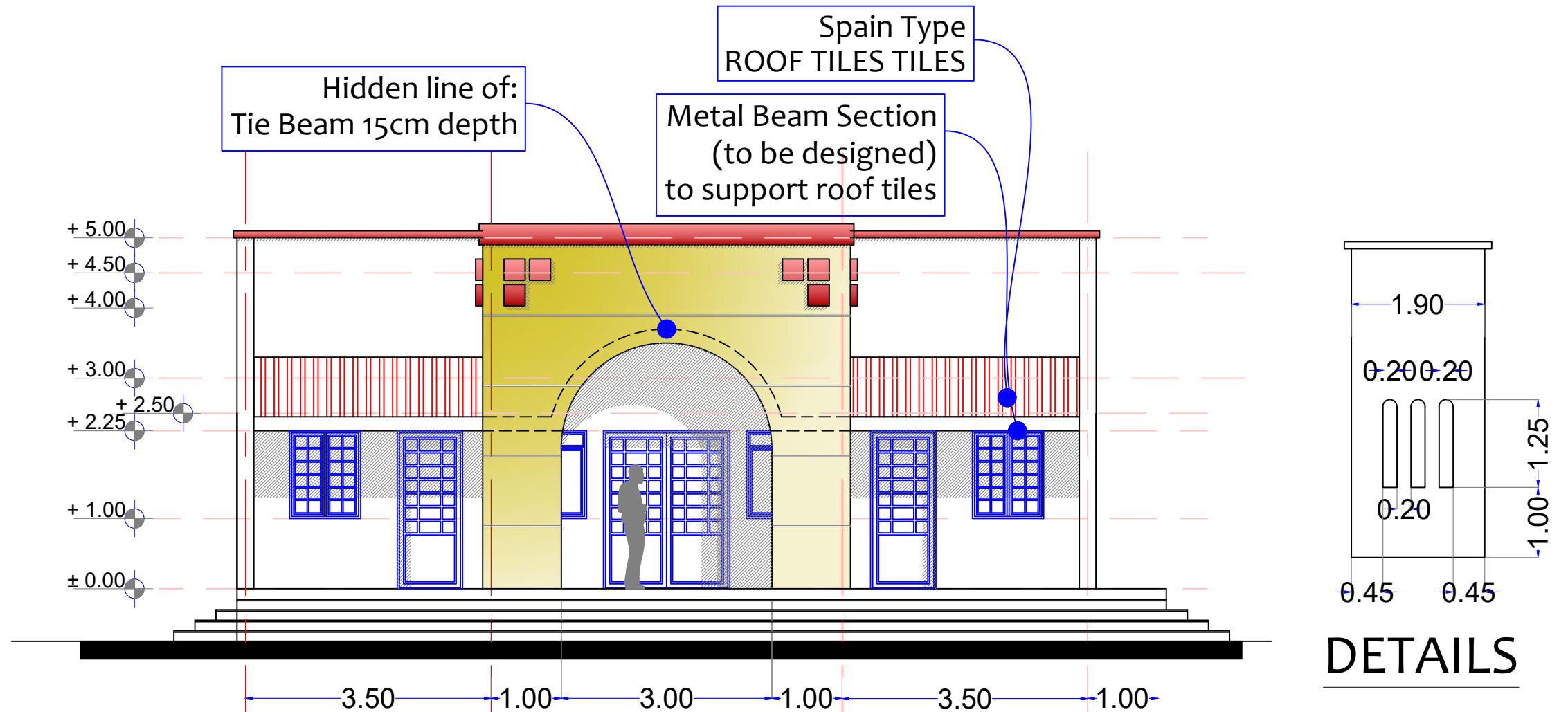


Detailed Plans

2020

**A1**

# **ELEVATION MAIN VIEW** Main Building



UK corrugated Sheets 0.4mm  
20cm overlapped  
rock wool insulation sheets  
fixed with Ghanji screw and nut and rubber nut

TRUSS  
4X8CM SECTION  
3COATS OF ANTI-CORROSION PAINT

Design by:  
**Bahauddin Ibrahim**  
ENGINEERING  
Project Management | Design | Supervision  
+249 9 123 3 1958  
bahauddin.engineering@gmail.com

ELEVATION

2019

A2





Lead Agency:

**UNDP**  
**UNAMID**  
State Liaison Functions (SLF)  
Joint Program

Design by:

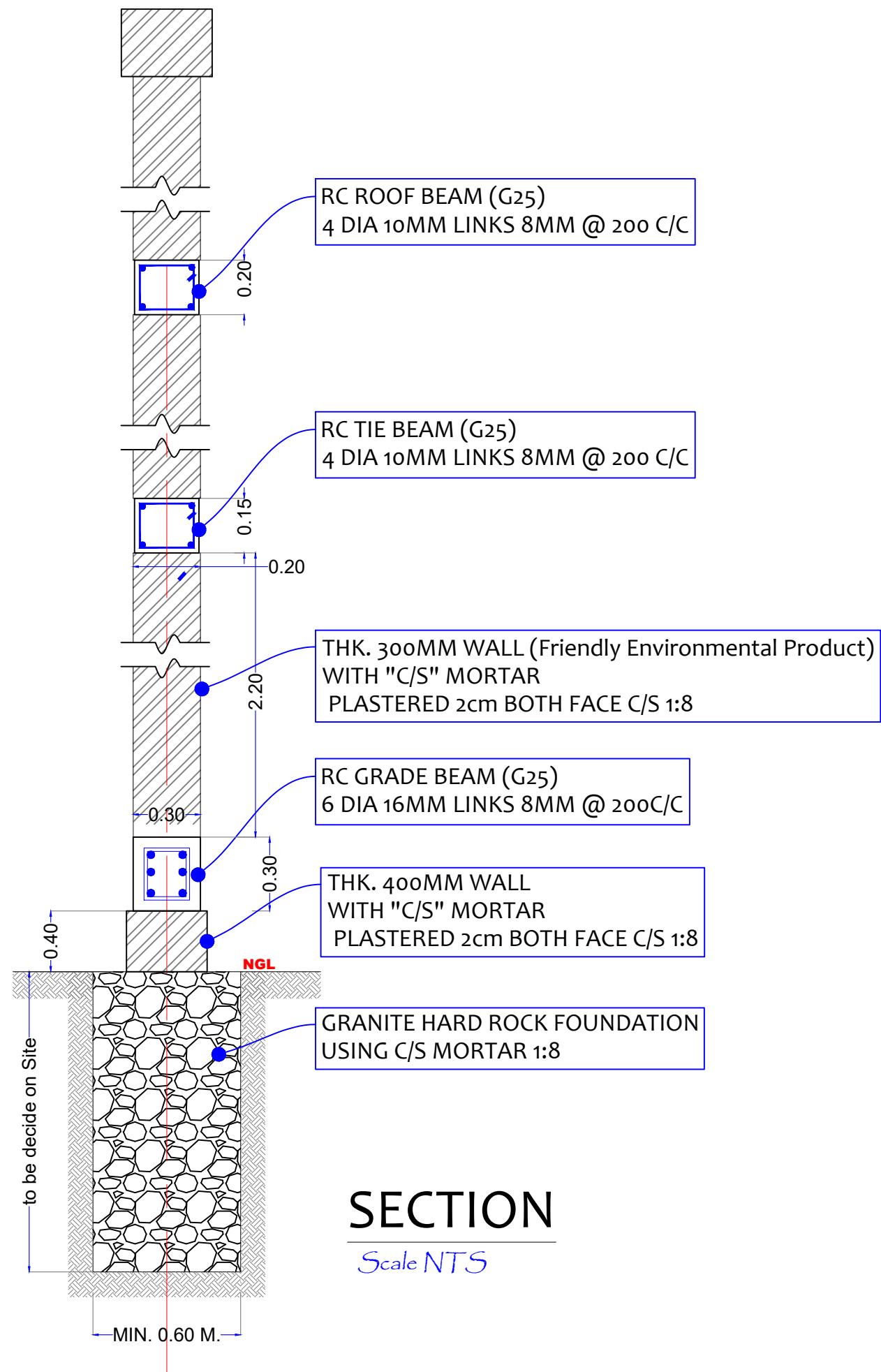
**Bahauddin Ibrahim**  
**ENGINEERING**  
Project Management | Design | Supervision  
+249 9 123 3 1958  
bahauddin.engineering@gmail.com

Views

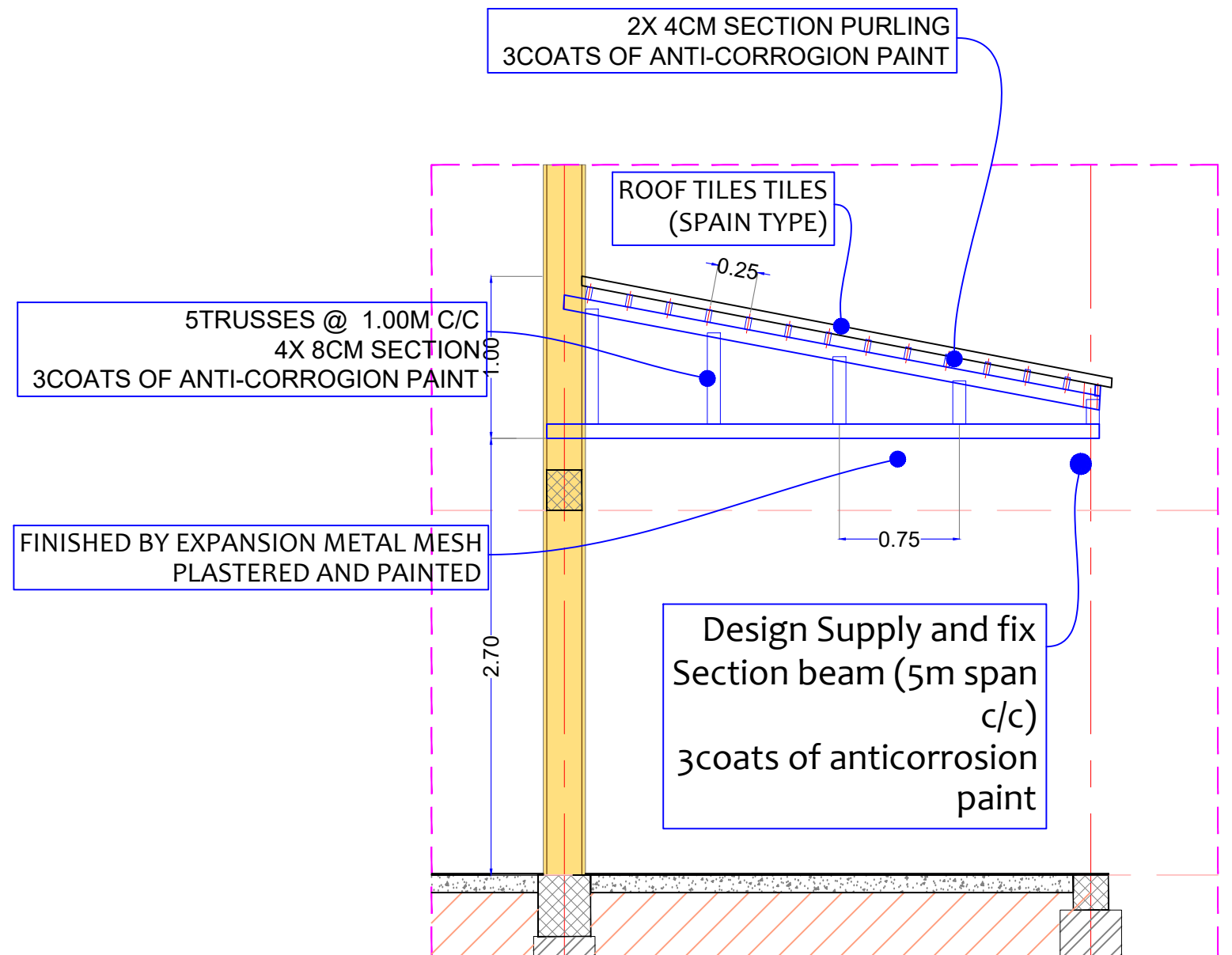
2019

**A3**





**SECTION**  
Scale NTS



**VERANDA SECTION**  
Scale NTS

Lead Agency:  
**UNDP**  
**UNAMID**  
State Liaison Functions (SLF)  
Joint Program

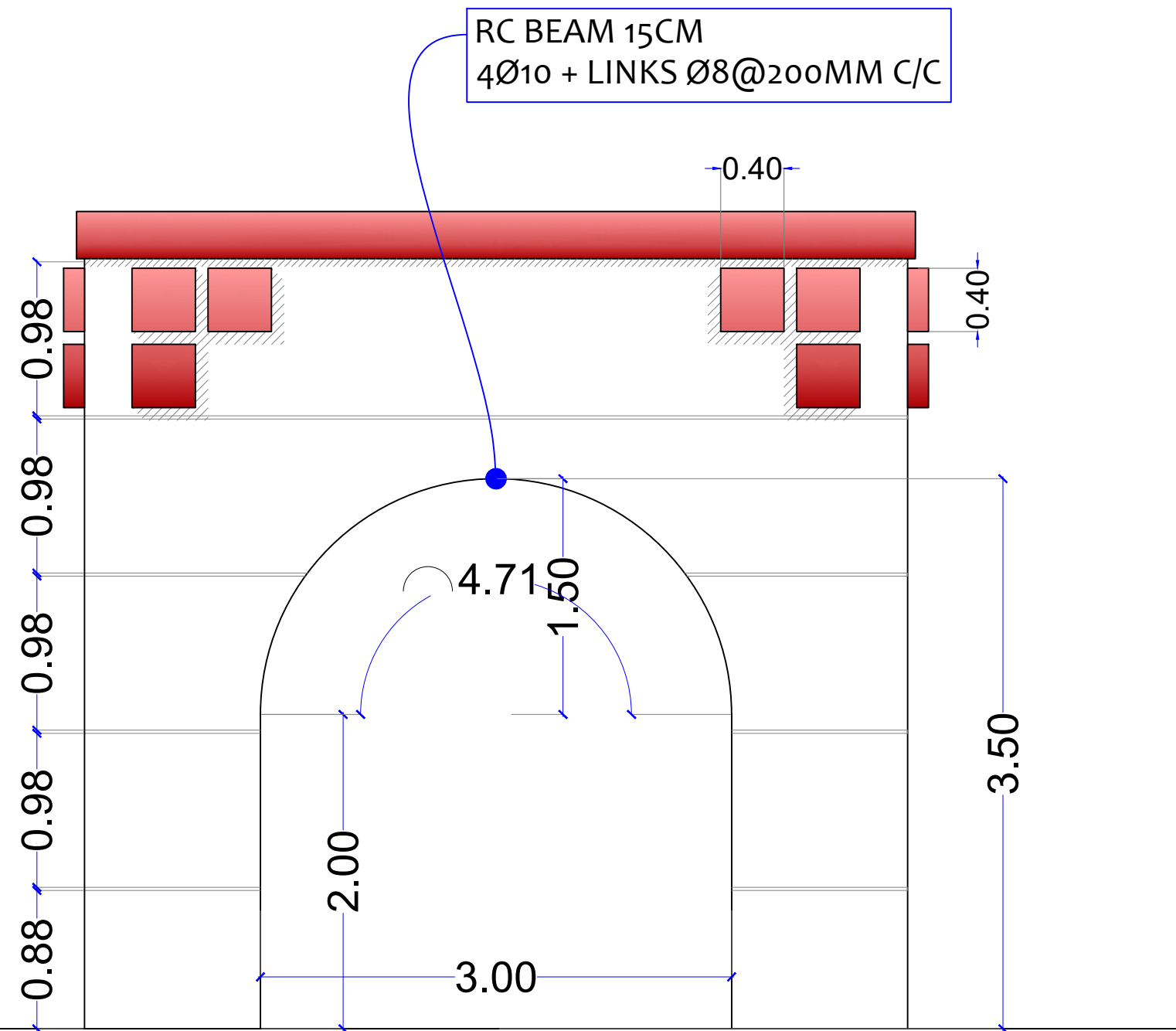
Design by:  
**Bahauddin Ibrahim**  
**ENGINEERING**  
Project Management | Design | Supervision  
+249 9 123 3 1958  
bahauddin.engineering@gmail.com

**SECTION**

2019

**A4**

**ELEVATION MAIN VIEW**  
**Main Entrance**



Lead Agency:  
**UNDP**  
**UNAMID**  
State Liaison Functions (SLF)  
Joint Program

Design by:  
**Bahauddin Ibrahim**  
ENGINEERING  
Project Management | Design | Supervision  
+249 9 123 3 1958  
bahauddin.engineering@gmail.com

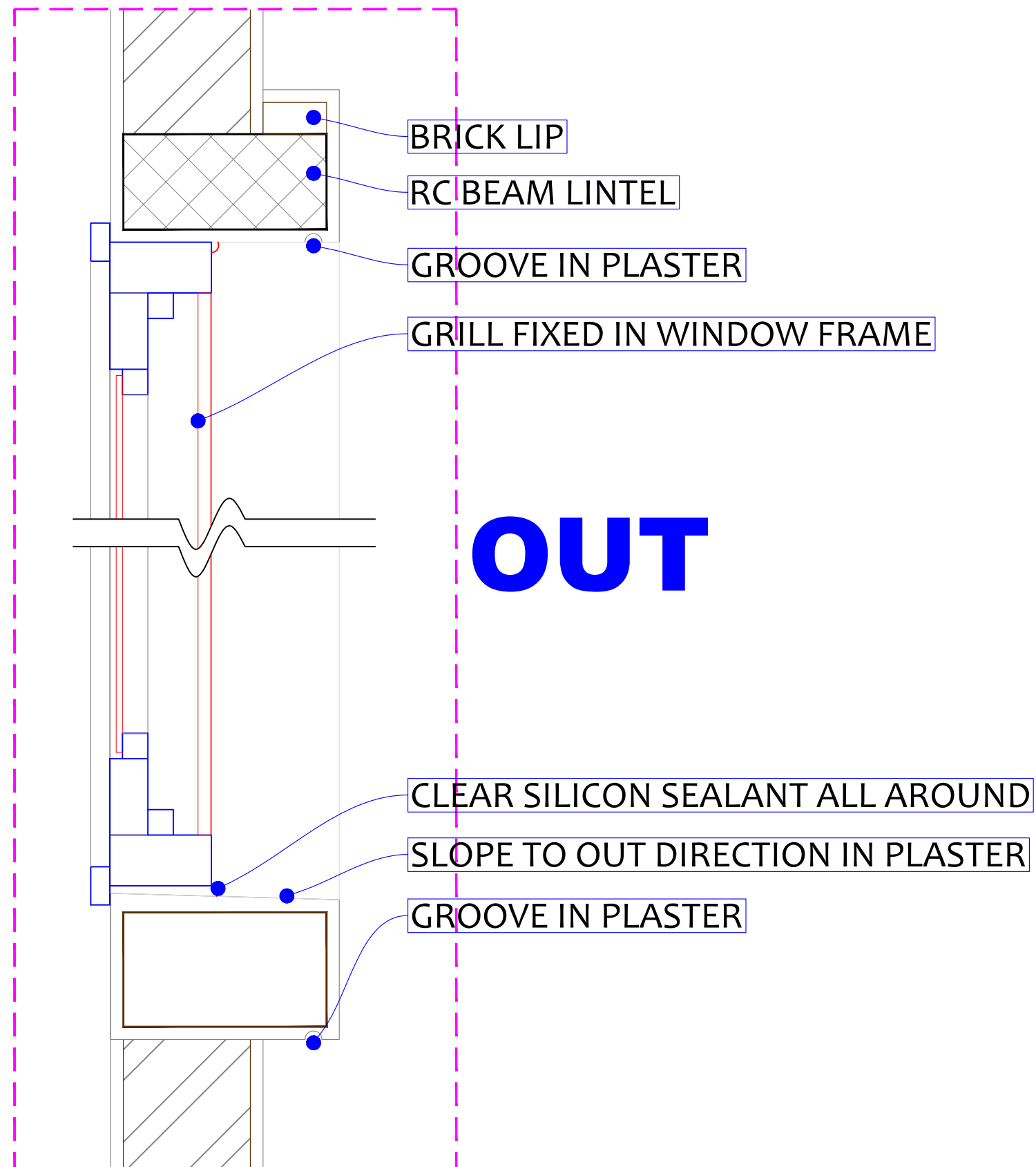
SECTION

2019

**A5**

**IN**

**OUT**



Lead Agency:  
**UNDP**  
**UNAMID**  
State Liaison Functions (SLF)

Design by:  
**Bahauddin Ibrahim**  
**ENGINEERING**  
Project Management | Design | Supervision  
+249 9 123 3 1958  
bahauddin.engineering@gmail.com

Detailed Section

December  
2018

**D1**



# D1 Painted Steel

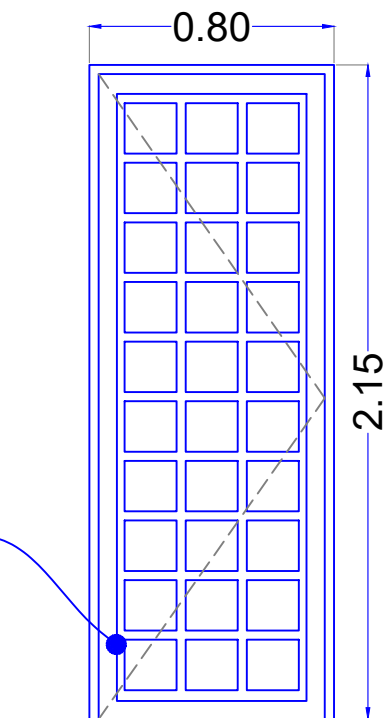
Width 800xH.2150mm

Hinged STEEL DOOR

LEXAN @ Door Leaf

Frame (4X8 Tube)  
Door Leaf (3X6 Tube)  
3 Hinges Each Leaf  
1 Handle & 2 Latch

FRAME 4X 8 AND DOOR LEAF 3X6  
 $\frac{3}{4}$ " Rectangular H&V LEXAN @ DOOR LEAF  
FINISHED OIL PAINTS 3 COATS ON  
3 COATS OF ANTI-CORROSION PAINT  
3 HEAVY DUTY HINGES



# D2 Painted Steel

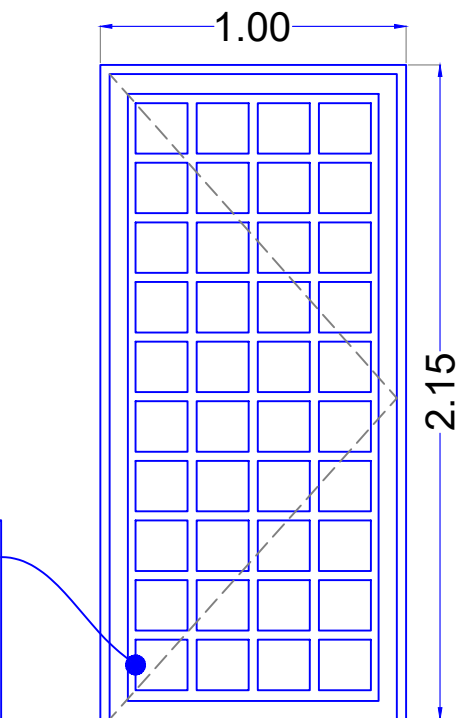
Width 1000xH.2150mm

Hinged STEEL DOOR

LEXAN @ Door Leaf

Frame (4X8 Tube)  
Door Leaf (3X6 Tube)  
3 Hinges Each Leaf  
1 Handle & 2 Latch

FRAME 4X 8 AND DOOR LEAF 3X6  
 $\frac{3}{4}$ " Rectangular H&V LEXAN @ DOOR LEAF  
FINISHED OIL PAINTS 3 COATS ON  
3 COATS OF ANTI-CORROSION PAINT  
3 HEAVY DUTY HINGES



Lead Agency:  
UNDP  
UNAMID  
State Liaison Functions (SLF)

Design by:  
**Bahauddin Ibrahim**  
ENGINEERING  
Project Management | Design | Supervision  
+249 9 123 3 1958  
bahauddin.engineering@gmail.com

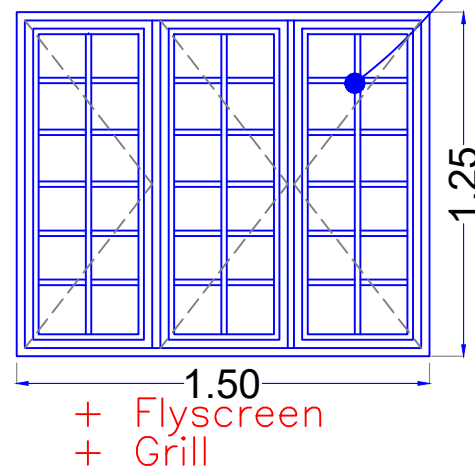
Detailed Section

December  
2018

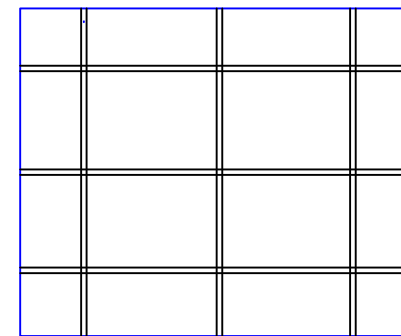
D2

## **W2** Painted Steel Width 1500xH.1250mm

Hinged Window  
Flyscreen Mesh  
**6mm Glaze**  
Frame (4X8 Tube)  
Window Leaf (3X6 Tube)  
Grill (3/4" X 3/4" Tube)  
**3 Handle & 6 Latch**

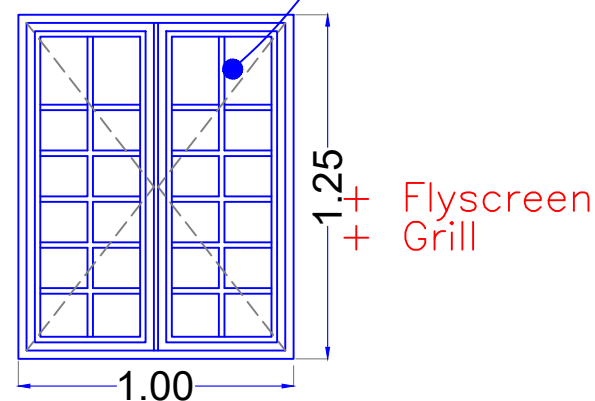


FRAME 4X 8 AND DOOR LEAF 3X6  
3/4" Rectangular H&V LEXAN @ DOOR LEAF  
FINISHED OIL PAINTS 3 COATS ON  
3 COATS OF ANTI-CORROSION PAINT  
3 HEAVY DUTY HINGES

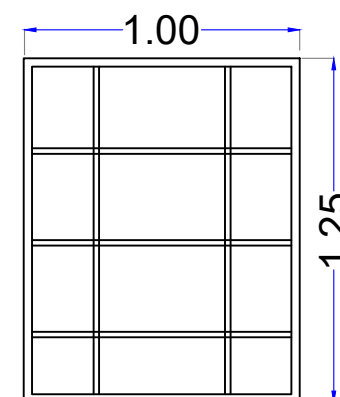


## **W3** Painted Steel Width 1500xH.1250mm

Hinged Window  
Flyscreen Mesh  
**4MM LEXAN**  
Frame (4X8 Tube)  
Window Leaf (3X6 Tube)  
Grill (3/4 X 3/4" Tube)  
**2 Handle & 4 Latch**



FRAME 4X 8 AND DOOR LEAF 3X6  
3/4" Rectangular H&V LEXAN @ DOOR LEAF  
FINISHED OIL PAINTS 3 COATS ON  
3 COATS OF ANTI-CORROSION PAINT  
3 HEAVY DUTY HINGES



Lead Agency:  
**UNDP**  
**UNAMID**  
State Liaison Functions (SLF)

Design by:  
**Bahauddin Ibrahim**  
ENGINEERING  
Project Management | Design | Supervision  
+249 9 123 3 1958  
bahauddin.engineering@gmail.com

Detailed Section

December  
2018

**D3**

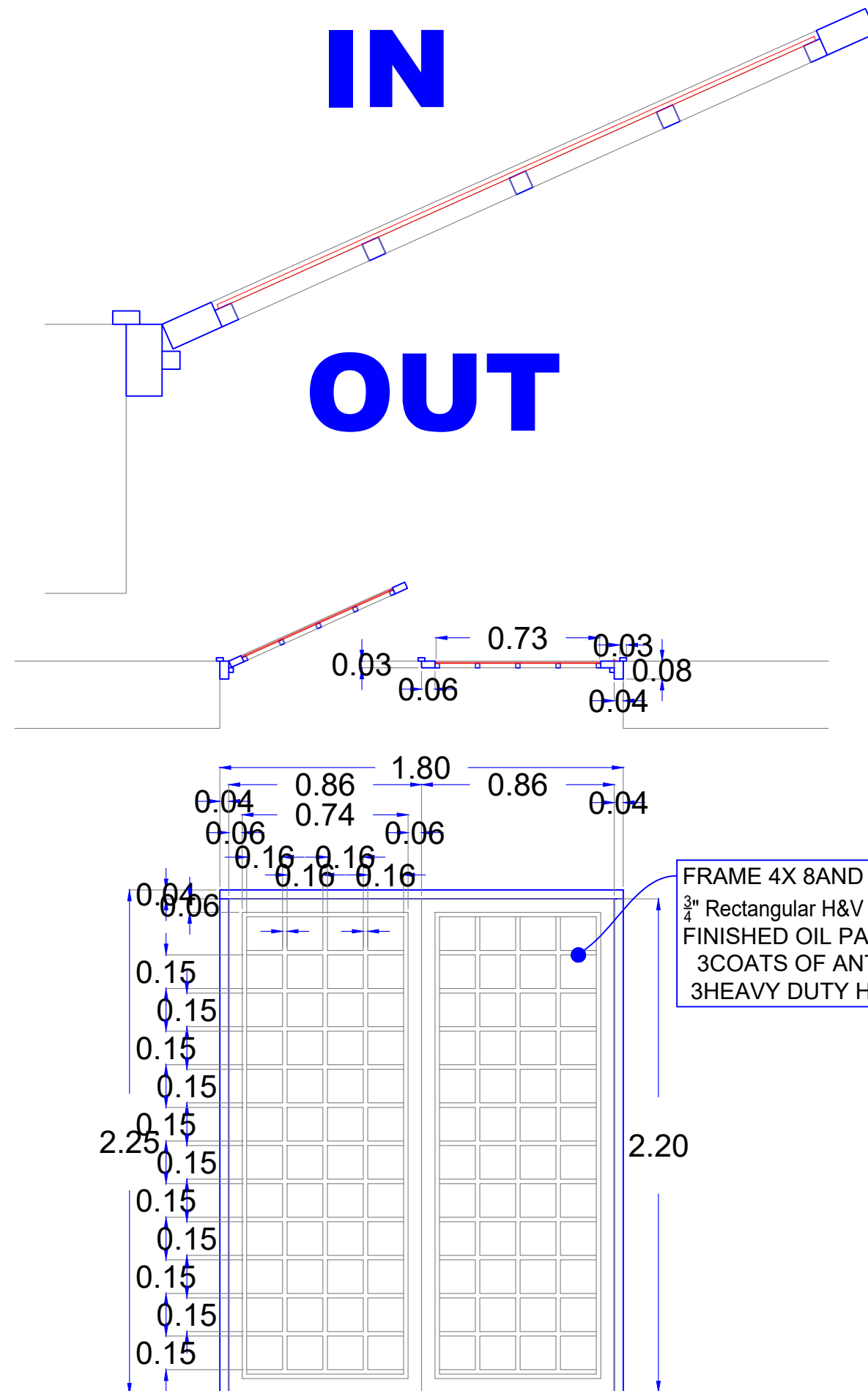
# OUT

## Hinged STEEL DOOR

Frame (4X8 Tube)  
Door Leaf (3X6 Tube)

## 3 Hinges Each Leaf

## 1Handle & 2 Latch




Design by:

**Bahauddin Ibrahim**  
ENGINEERING

Project Management | Design | Supervision

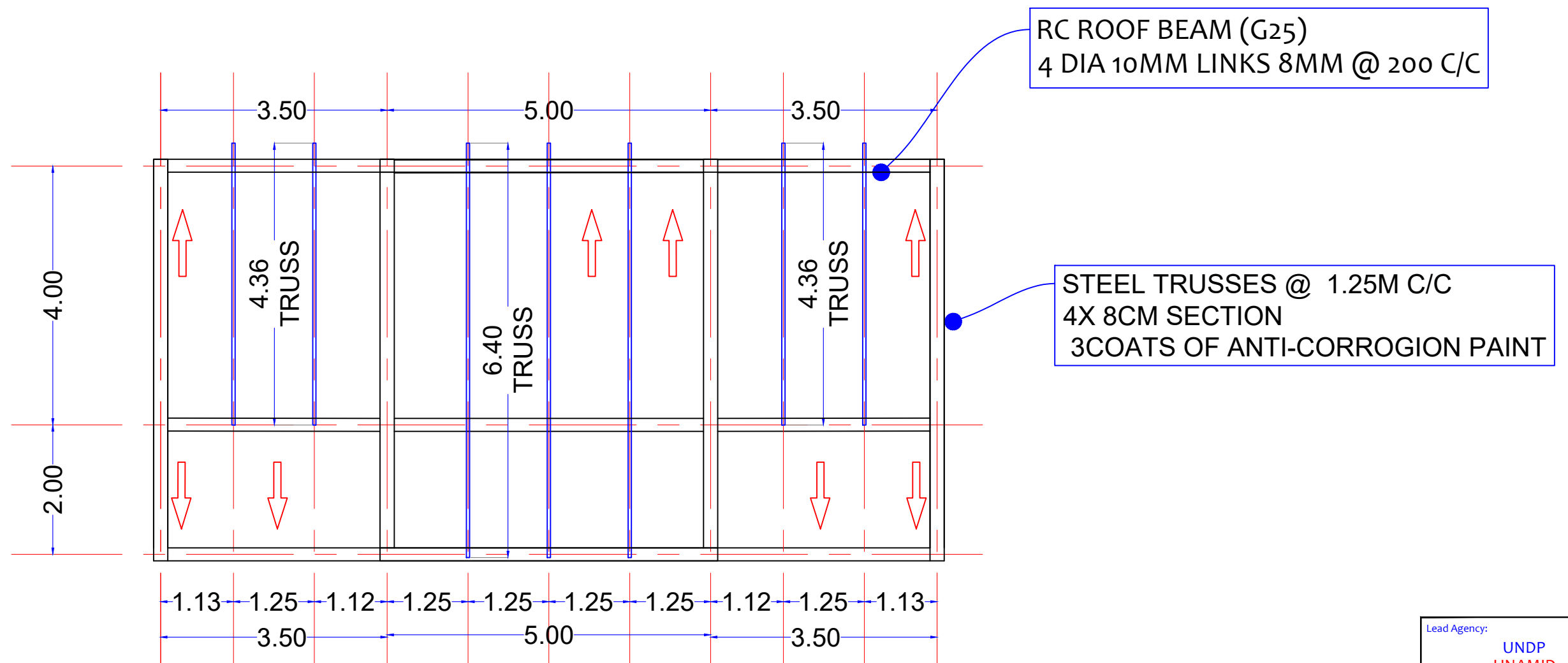
+249 9 123 3 1958  
[bahauddin.engineering@gmail.com](mailto:bahauddin.engineering@gmail.com)



Detailed Section

December  
2018

D4



## ROOF BEAMS & TRUSS LAYOUT

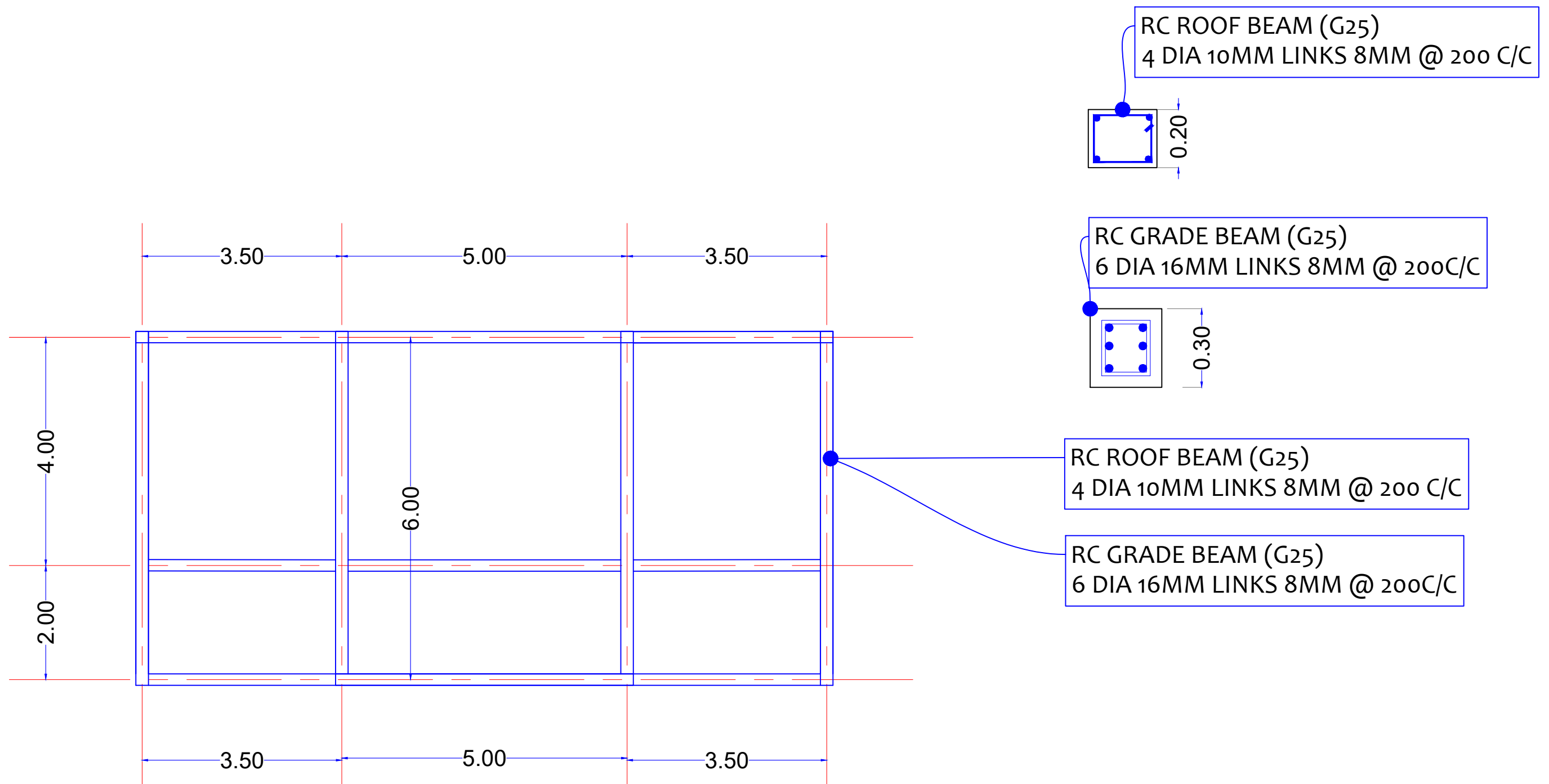
Lead Agency:  
UNDP  
UNAMID  
State Liaison Functions (SLF)  
Joint Program

Design by:  
**Bahauddin Ibrahim**  
ENGINEERING  
Project Management | Design | Supervision  
+249 9 123 3 1958  
bahauddin.engineering@gmail.com

DETAILS

2019

**S1**



## BEAMS LAYOUT

Lead Agency:  
**UNDP**  
**UNAMID**  
 State Liaison Functions (SLF)  
 Joint Program

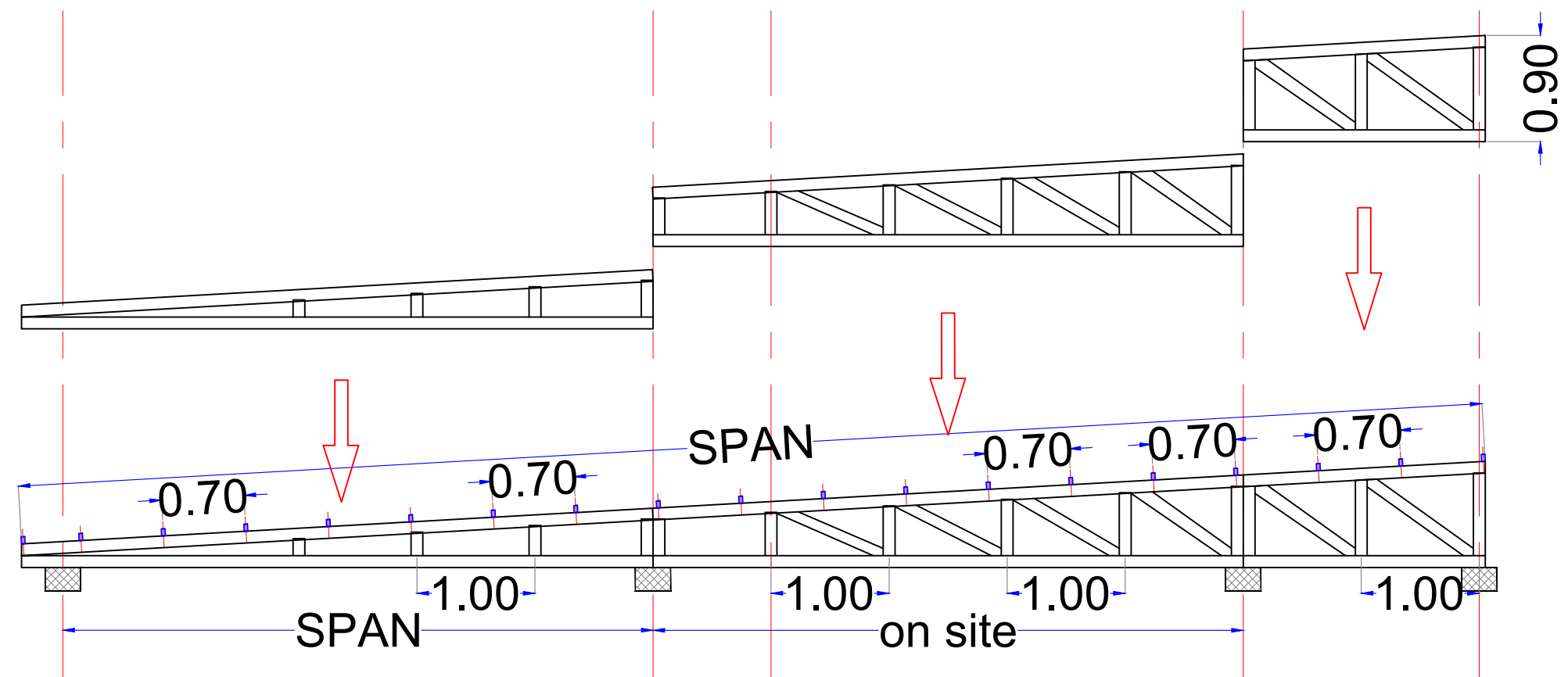
Design by:  
**Bahauddin Ibrahim**  
**ENGINEERING**  
 Project Management | Design | Supervision  
 +249 9 123 3 1958  
 bahauddin.engineering@gmail.com

DETAILS

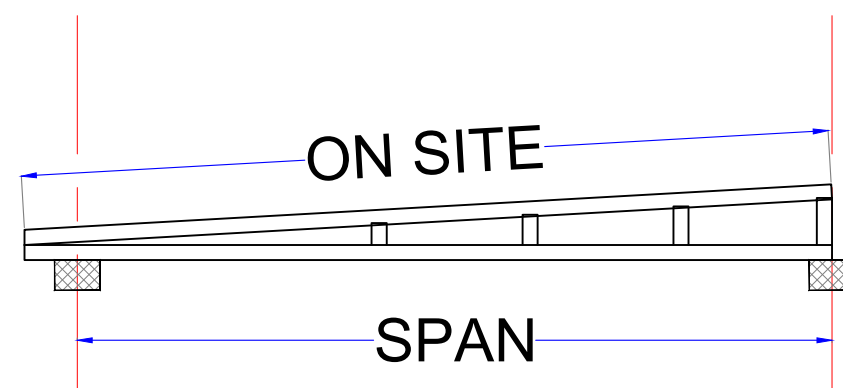
2019

**S2**





# STEEL TRUSS DETAILS



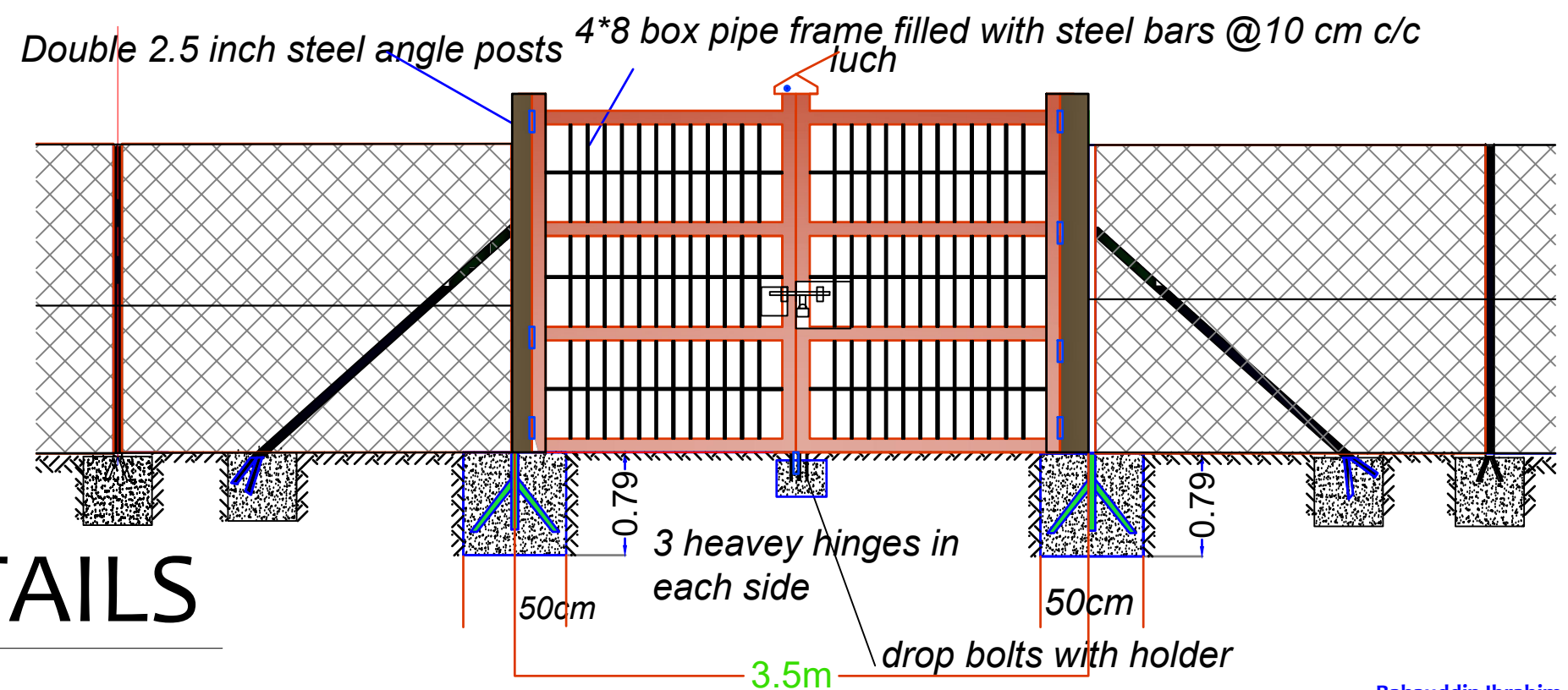
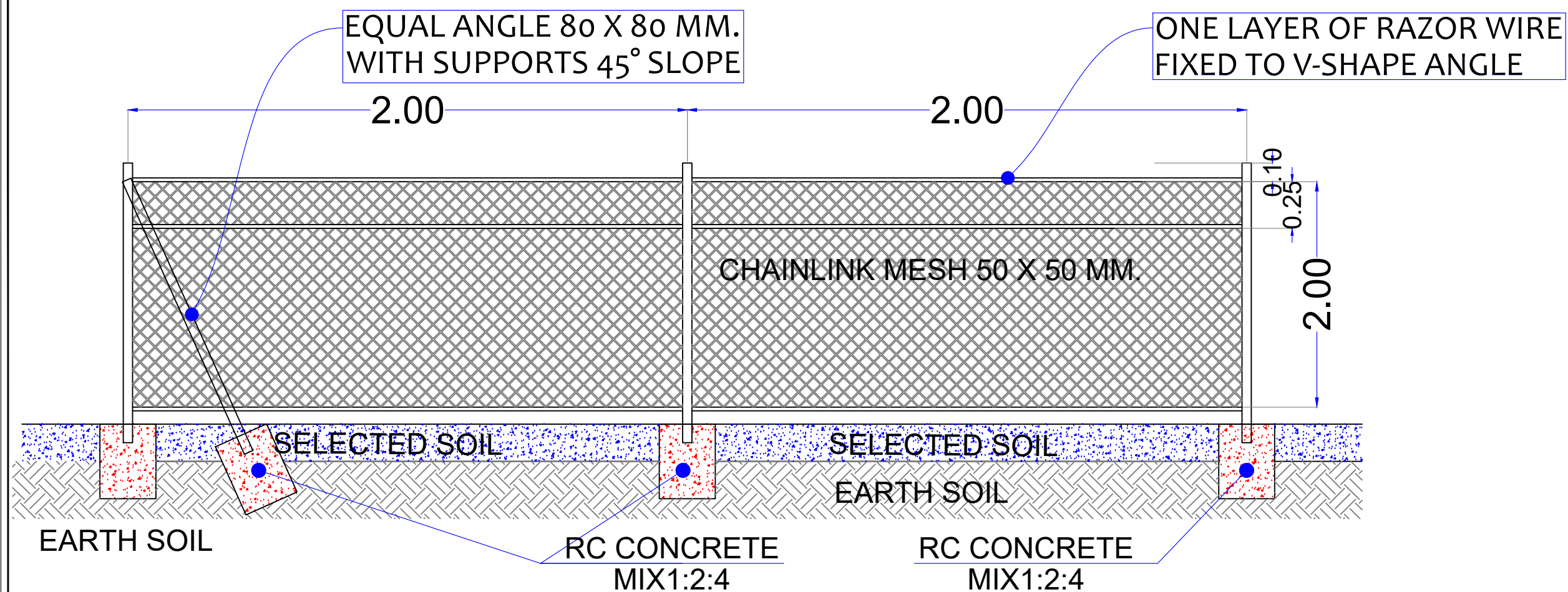
Lead Agency:  
UNDP  
UNAMID  
State Liaison Functions (SLF)

Design by:  
**Bahauddin Ibrahim**  
ENGINEERING  
Project Management | Design | Supervision  
+249 9 123 3 1958  
bahauddin.engineering@gmail.com

Details

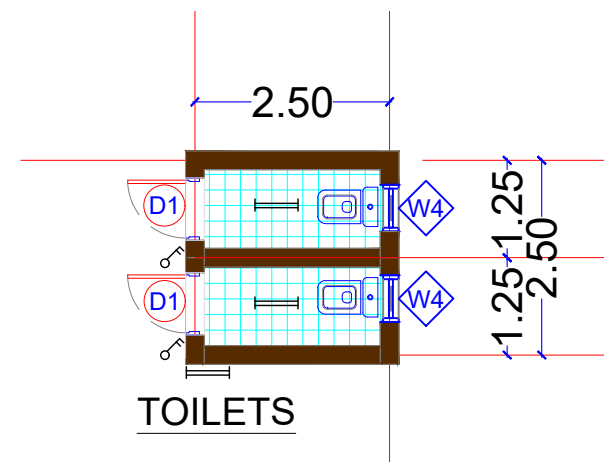
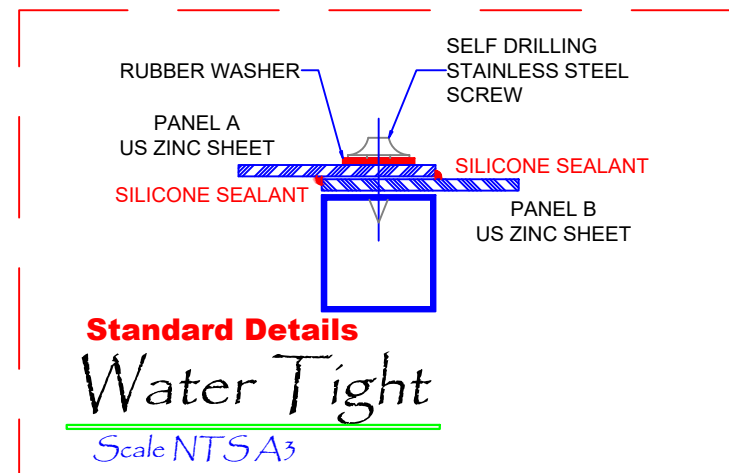
December  
2018

**S3**



## FENCE TYPICAL DETAILS

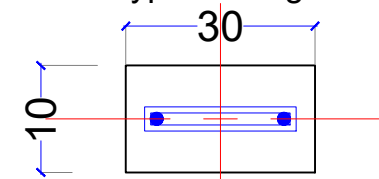
Fencing the Nursery (10,000 SQM) + 2 gates



#### QUANTITIES : (FOR LATRINE ROOF)

6 m length 3 X 6 Rectangular Steel Tube	3
6 m length 4 X 8 Rectangular Steel Tube	0
6 m. length 3 inch dia. steel pipe	0
US Zinc Sheet 6 m. Length	9 Sq.M.
Self Drilling Stainless Steel Screws	500

Above Doors Typical Length = 2.50 m. QTY = 1  
Above Windows Typical Length = 0.80 m. QTY = 2



#### RC Lintel Beam

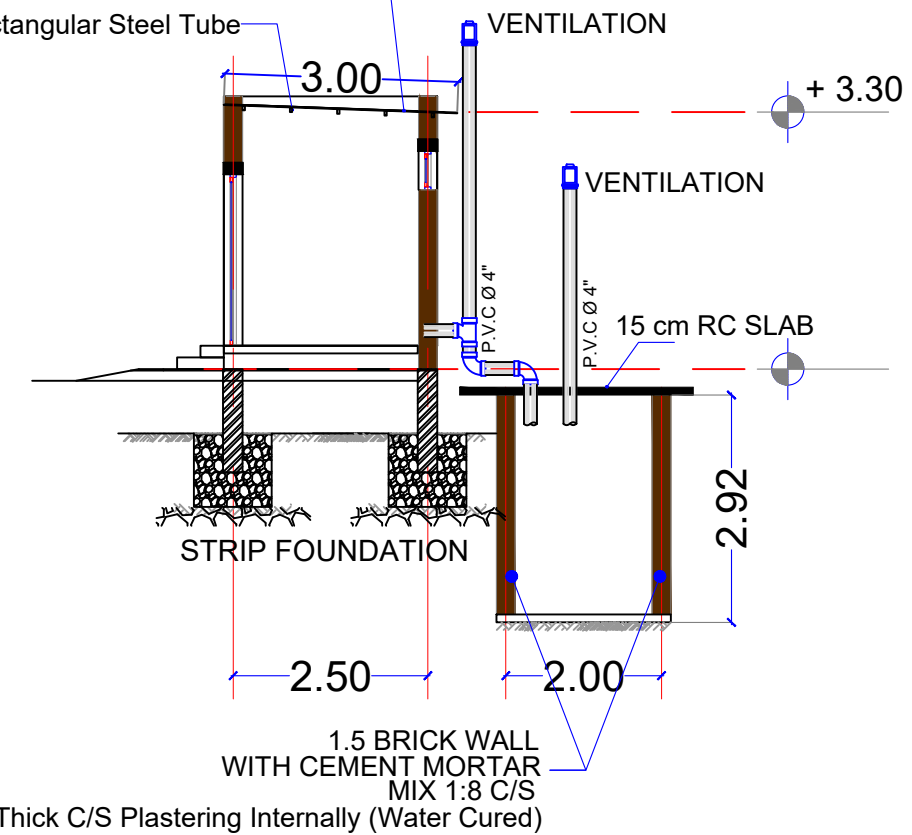
Scale NTSA3

#### Front View Elevation - Main View

Scale 1:100 A3

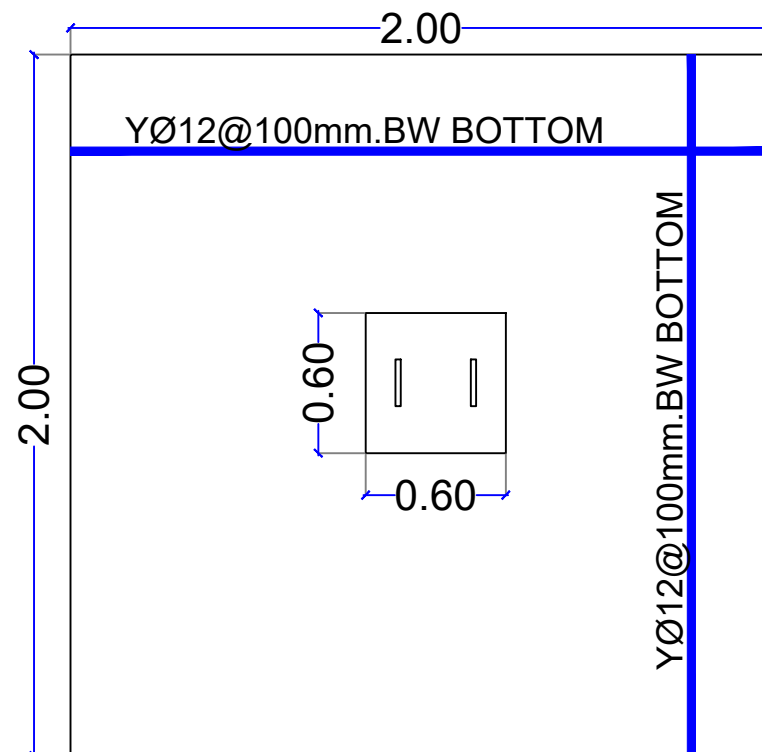
US Zinc Sheet Fixed To tubes with Self Drilling Scerws

3 X 6 Rectangular Steel Tube



#### Latrine Detailed Side Section

Scale 1:100 A3



#### FOR LINTELS' BEAMS

Y Ø 12 LENGTH = 12 M. QTY = 1 BAR(12M)

Y Ø 8 LENGTH = 12 M. QTY = 2 BAR(12M)

Y12 MM = 0.011 TON .

#### SLAB THICKNESS = 10 CM

#### BOTTOM STEEL :

Y Ø 12 QTY = 7 BAR(12M)

Y12 MM = 0.075 TON .

#### PLAN

#### Latrine Pit RC Slab Layout

Scale NTSA3

Lead Agency:

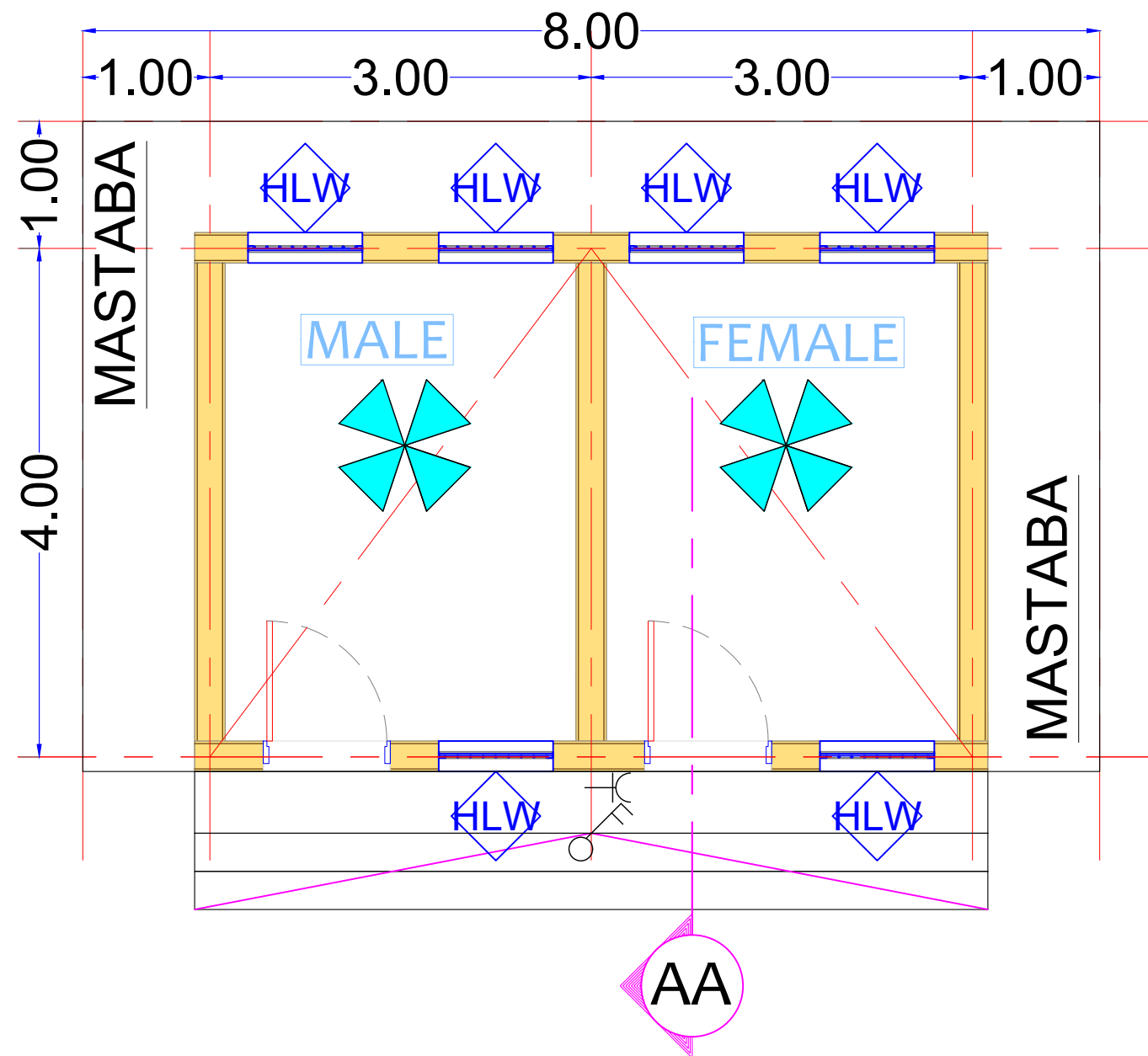
Design by:

**Bahauddin Ibrahim**  
ENGINEERING  
Project Management | Design | Supervision  
+249 9 123 3 1958  
bahauddin.engineering@gmail.com

LATRINE UNIT

March  
2018

LT



**Measured Layout**

# Holding Cells Plan

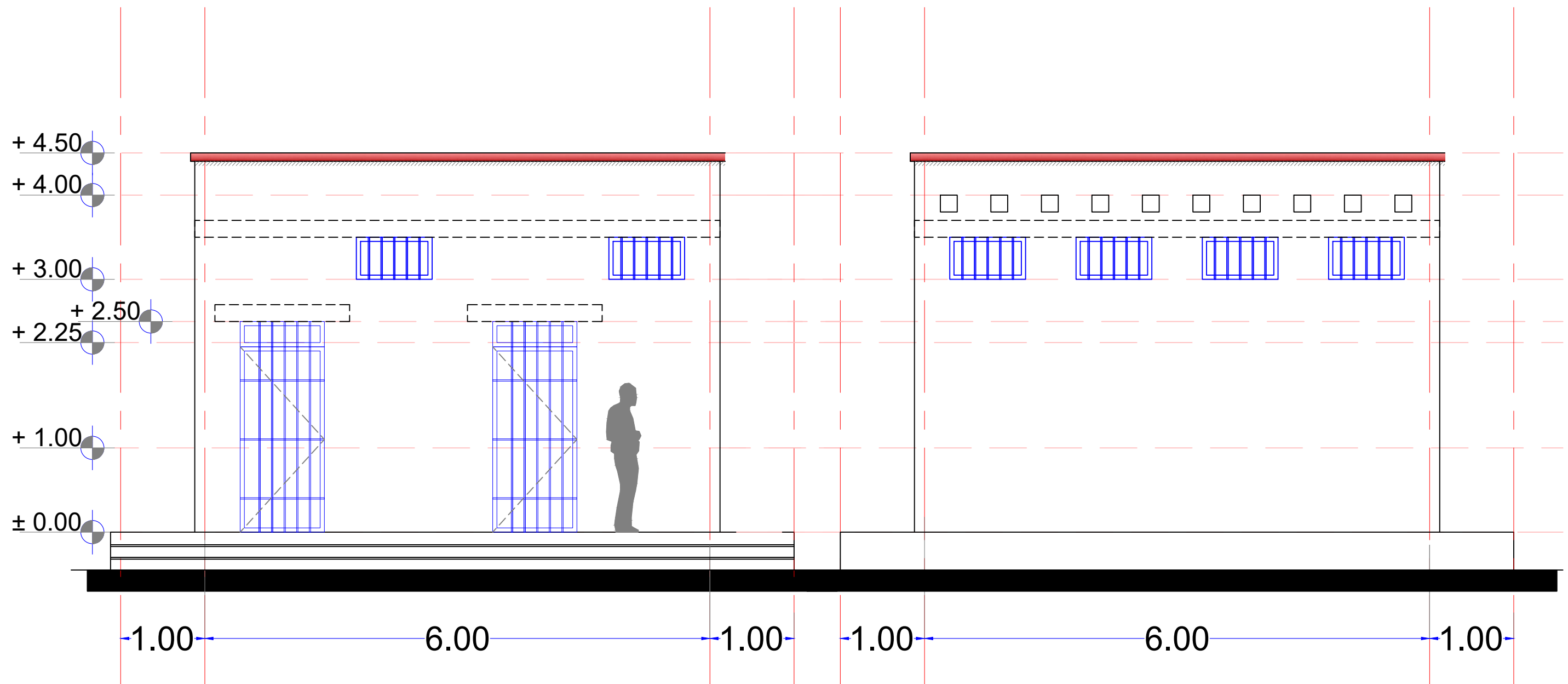
Lead Agency:  
**UNDP**  
**UNAMID**  
 State Liaison Functions (SLF)

Design by:  
**Bahauddin Ibrahim**  
**ENGINEERING**  
 Project Management / Design / Supervision  
 +249 9 123 3 1958  
 bahauddin.engineering@gmail.com

Detailed Plan

December  
 2018

**H1**



**Front & Rear Elevations**

# Holding Cells Elevations

Lead Agency:  
**UNDP**  
**UNAMID**  
 State Liaison Functions (SLF)

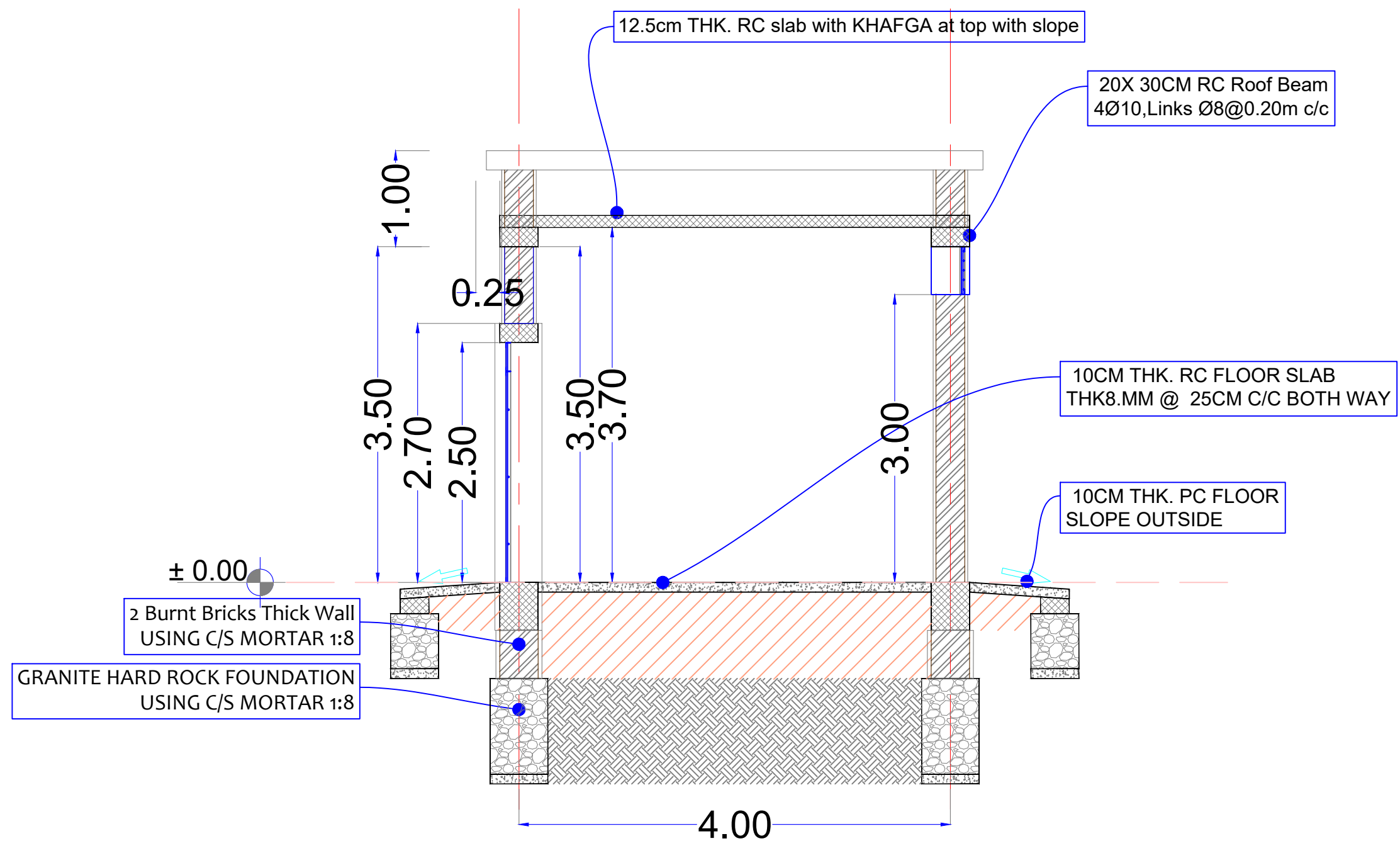
Design by:  
**Bahauddin Ibrahim**  
**ENGINEERING**  
 Project Management | Design | Supervision  
 +249 9 123 3 1958  
[bahauddin.engineering@gmail.com](mailto:bahauddin.engineering@gmail.com)

Elevations

December  
 2018

**H2**





# Holding Cells Section

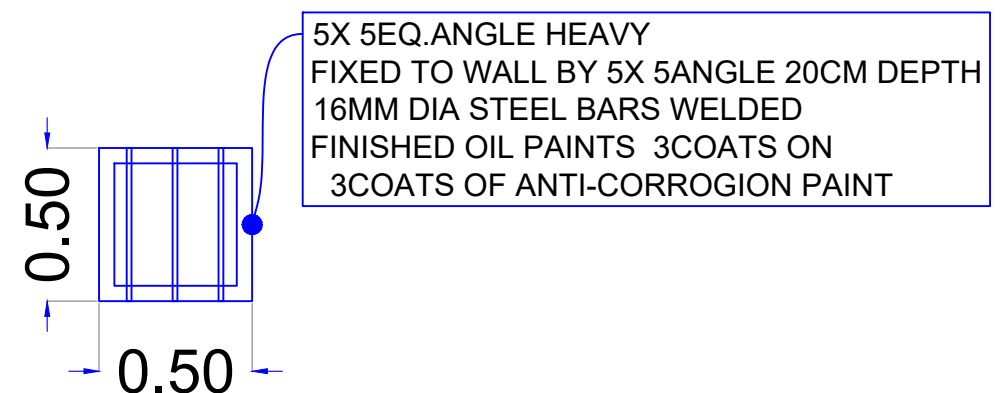
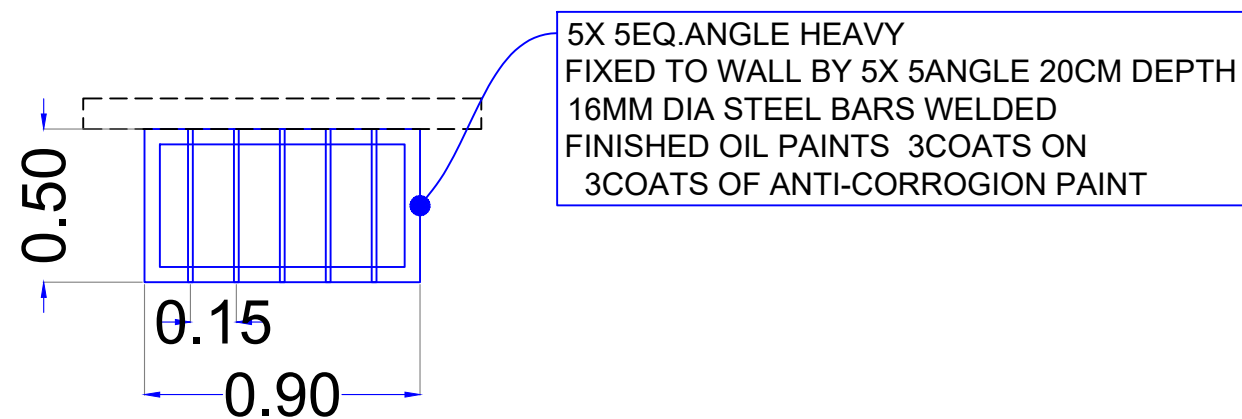
Lead Agency:  
UNDP  
UNAMID  
State Liaison Functions (SLF)

Design by:  
**Bahauddin Ibrahim**  
ENGINEERING  
Project Management | Design | Supervision  
+249 9 123 3 1958  
bahauddin.engineering@gmail.com

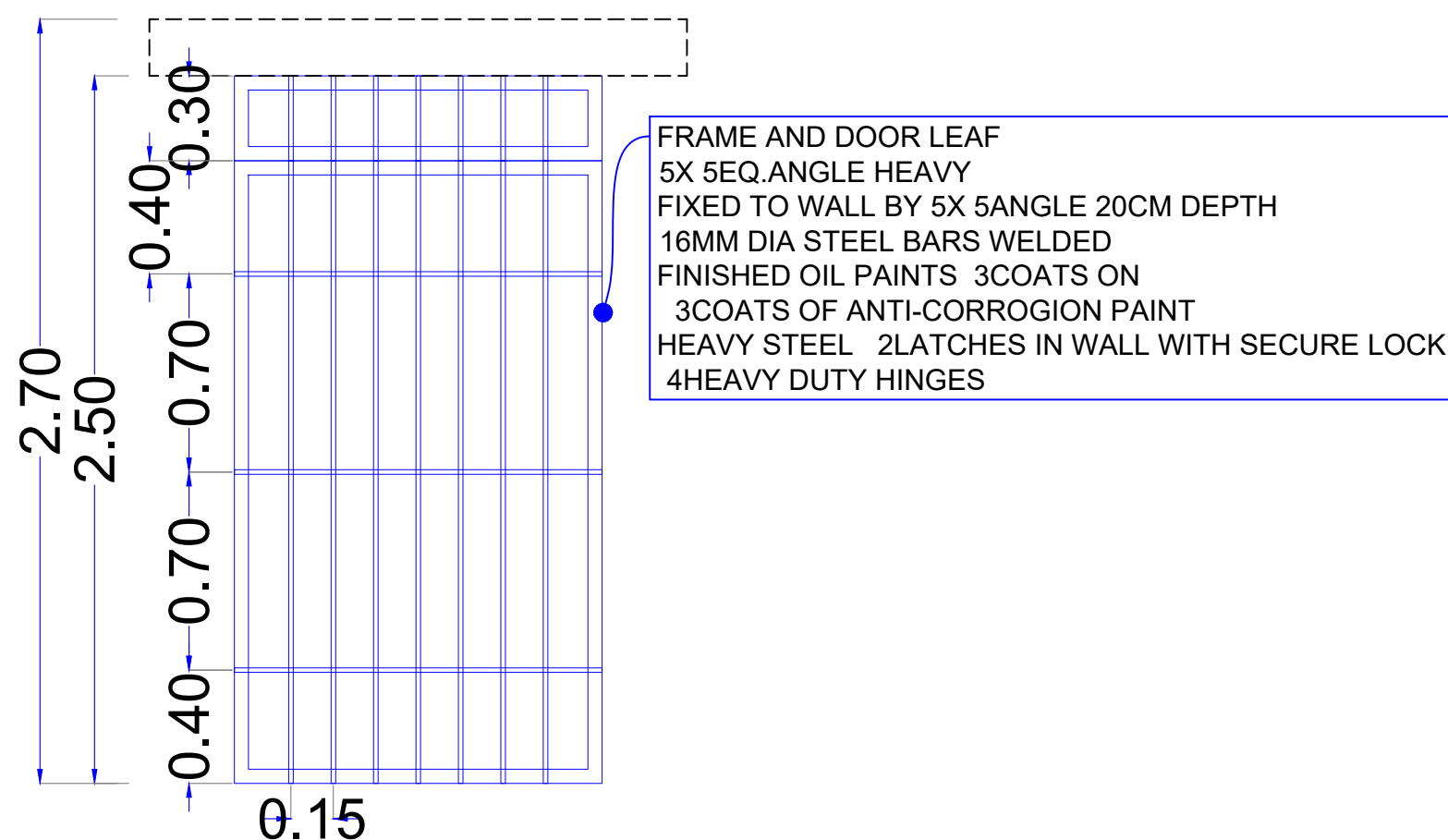
Detailed Plan

December  
2018

**H3**



## FIXED WINDOWS



## Holding Cells Door

Lead Agency:  
UNDP  
UNAMID  
State Liaison Functions (SLF)

Design by:  
**Bahauddin Ibrahim**  
ENGINEERING  
Project Management | Design | Supervision  
+249 9 123 3 1958  
bahauddin.engineering@gmail.com

Detailed Section

December  
2018

**HD**