

Architecture

Overview of Detailed Design Improvements

Paediatric Unit, Kassala Health Citadel, Sudan

Detailed Design

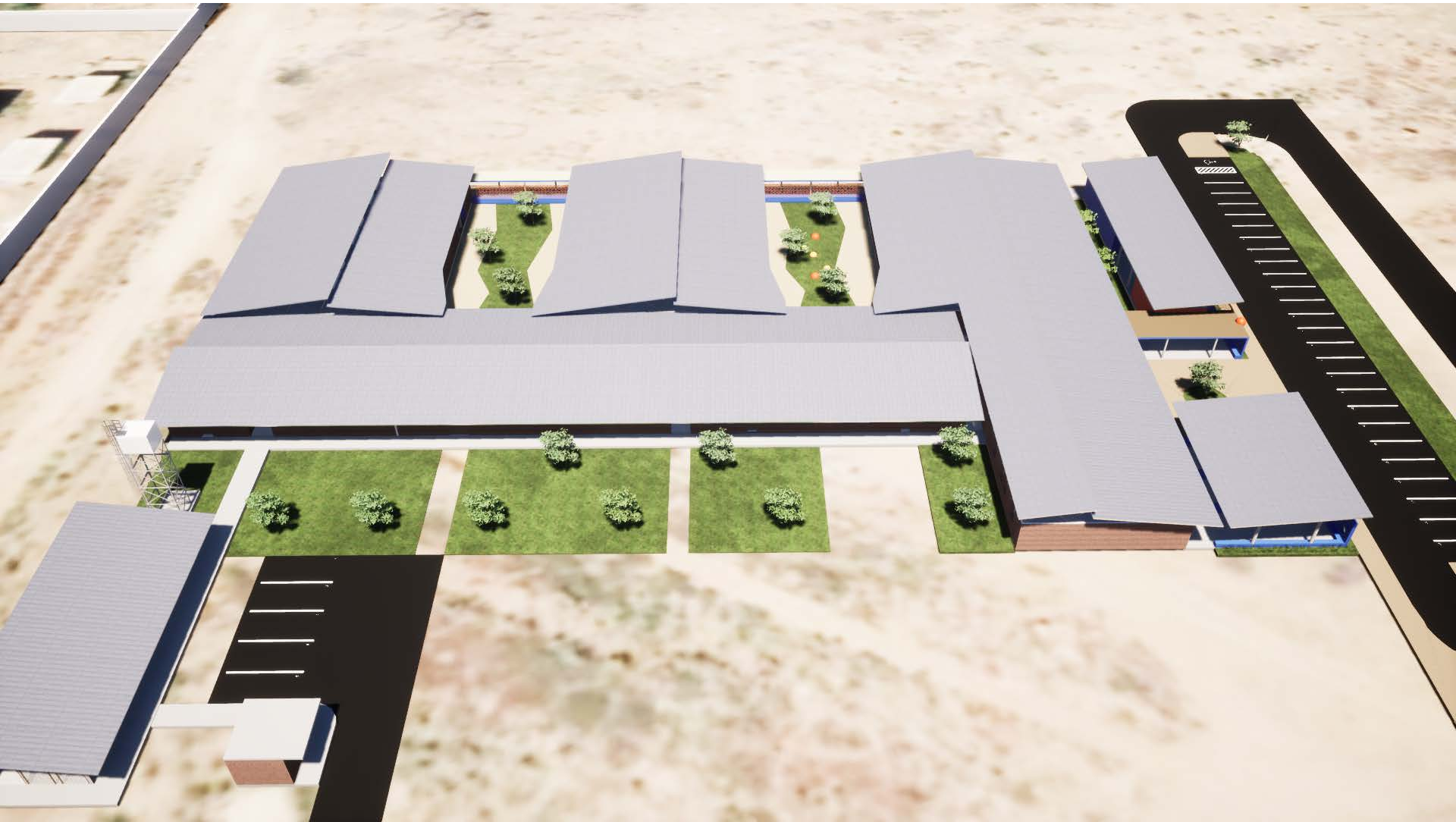
General plan



Paediatric Unit

Bird's-eye view

East view - 1st phase



Paediatric Unit

Bird's-eye view

East view - final phase



Paediatric Unit

Main entrance

Northeast view- 1st phase



Paediatric Unit

OPD waiting area

East view - 1st phase



Paediatric Unit

OPD waiting area

East view - final phase



Materials



Sudanese bricks



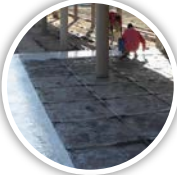
'Jaalis' perforated clay bricks



Metallic chainlink



Porcelain tiles



Screed concrete floor



River stones



Soft stucco (Exterior)



Plaster (interior)



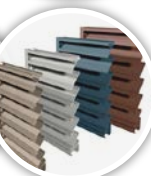
Acrylic paint



'Sandwich' roof panels



Aluminum windows



Aluminum louvres

Paediatric Unit

Wards patio

Final phase



Paediatric Unit

Wards interior corridor

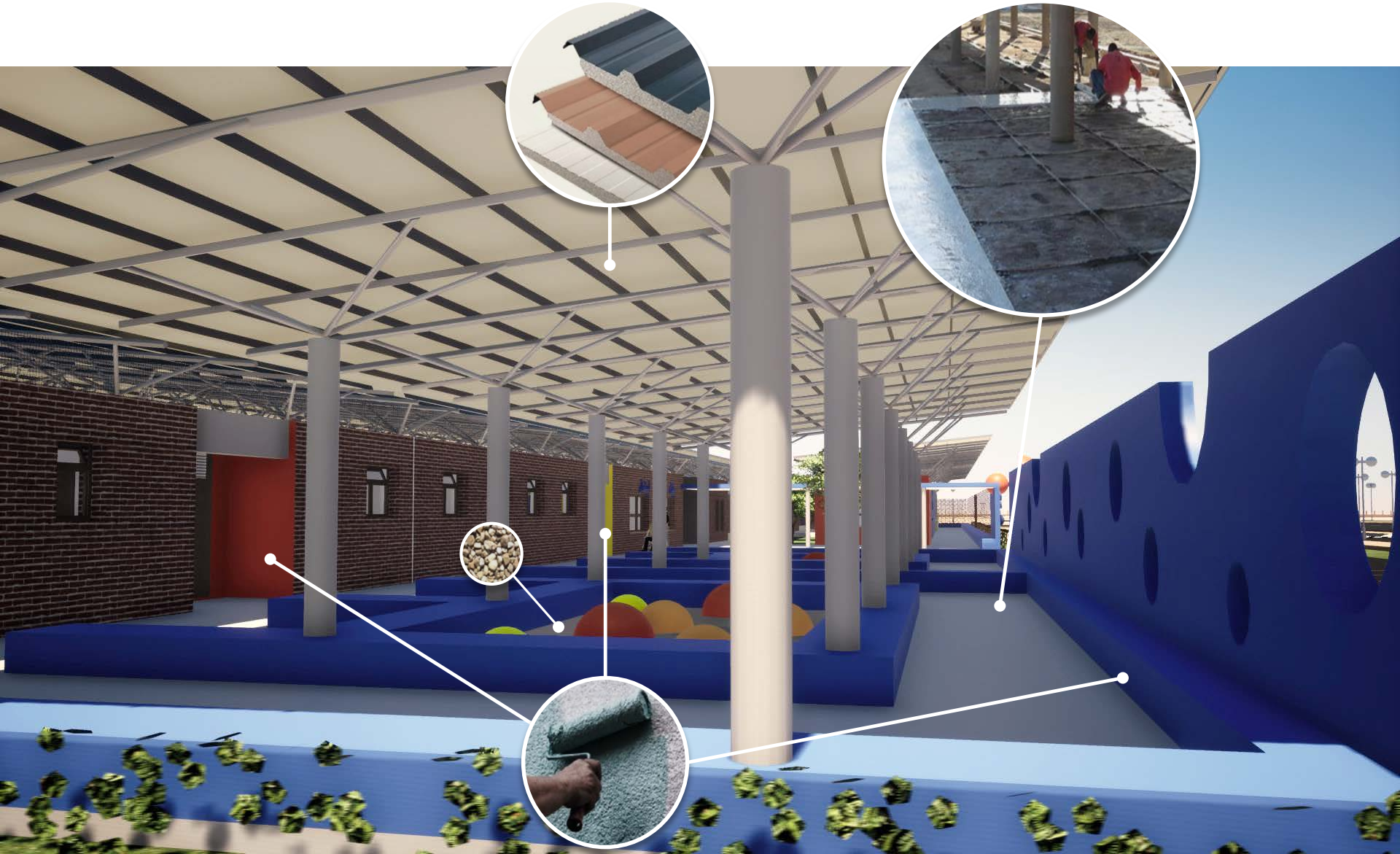
1st phase



Paediatric Unit

Exterior waiting

Outpatient interior north facade



Paediatric Unit

Wards block

West view co-patients corridor - 1st phase

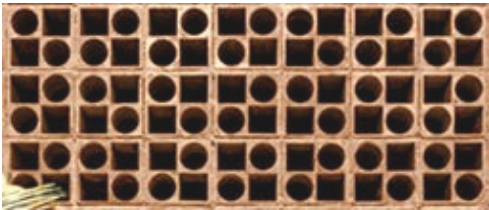


Paediatric Unit

Roof improvement

Roof gap above the concrete slab

To filter and protect the gap in between the roofs, from east / west rain or wind, a 'skin wall' is placed. These new partitions made of 'jaalis' clay bricks allows that below the metallic roof these areas keep soft ventilation and guarantees quality air at the admission of AC equipment.

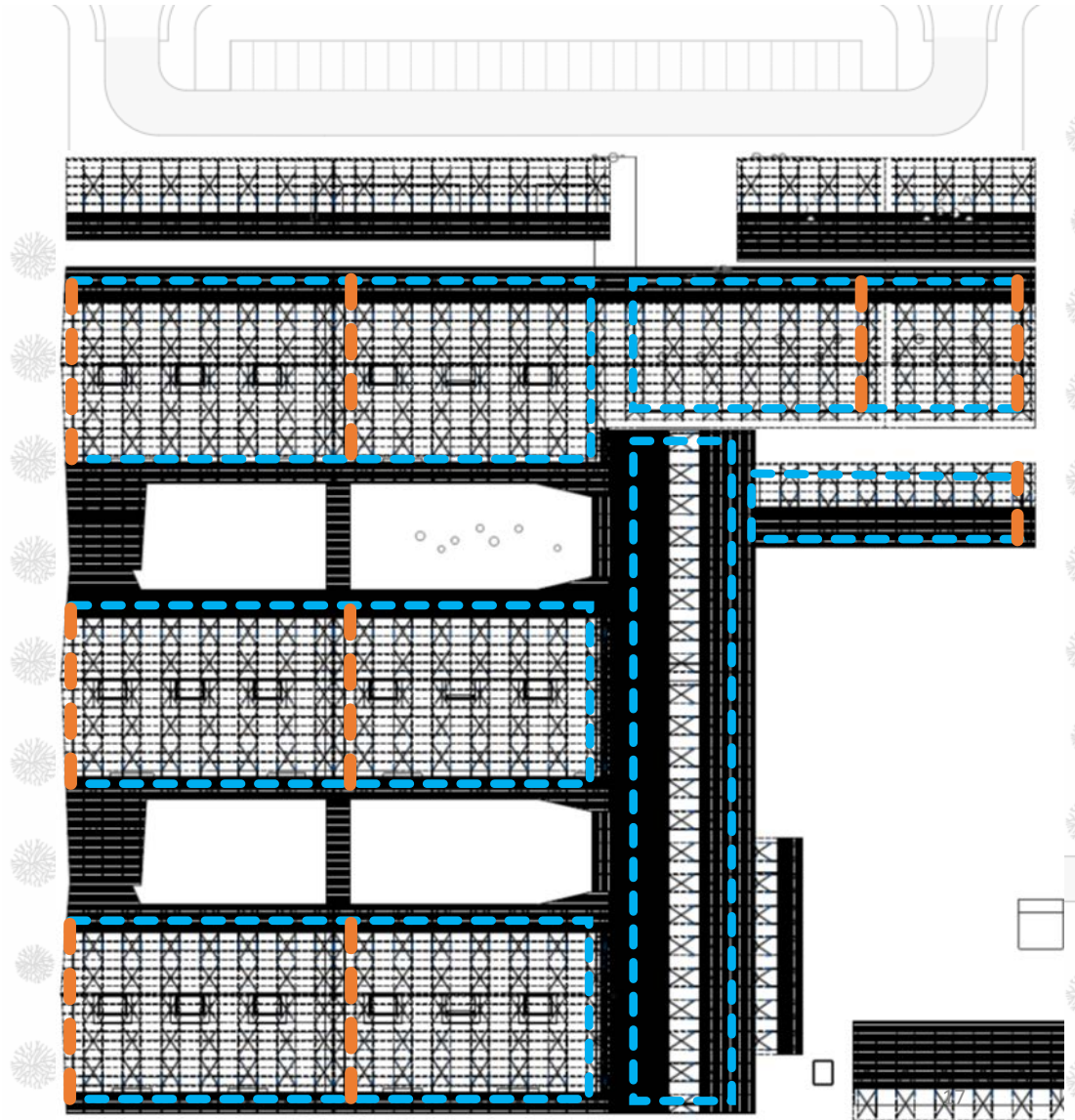


Skin wall with 'jaalis' pieces

Anti-birds chainlink fence



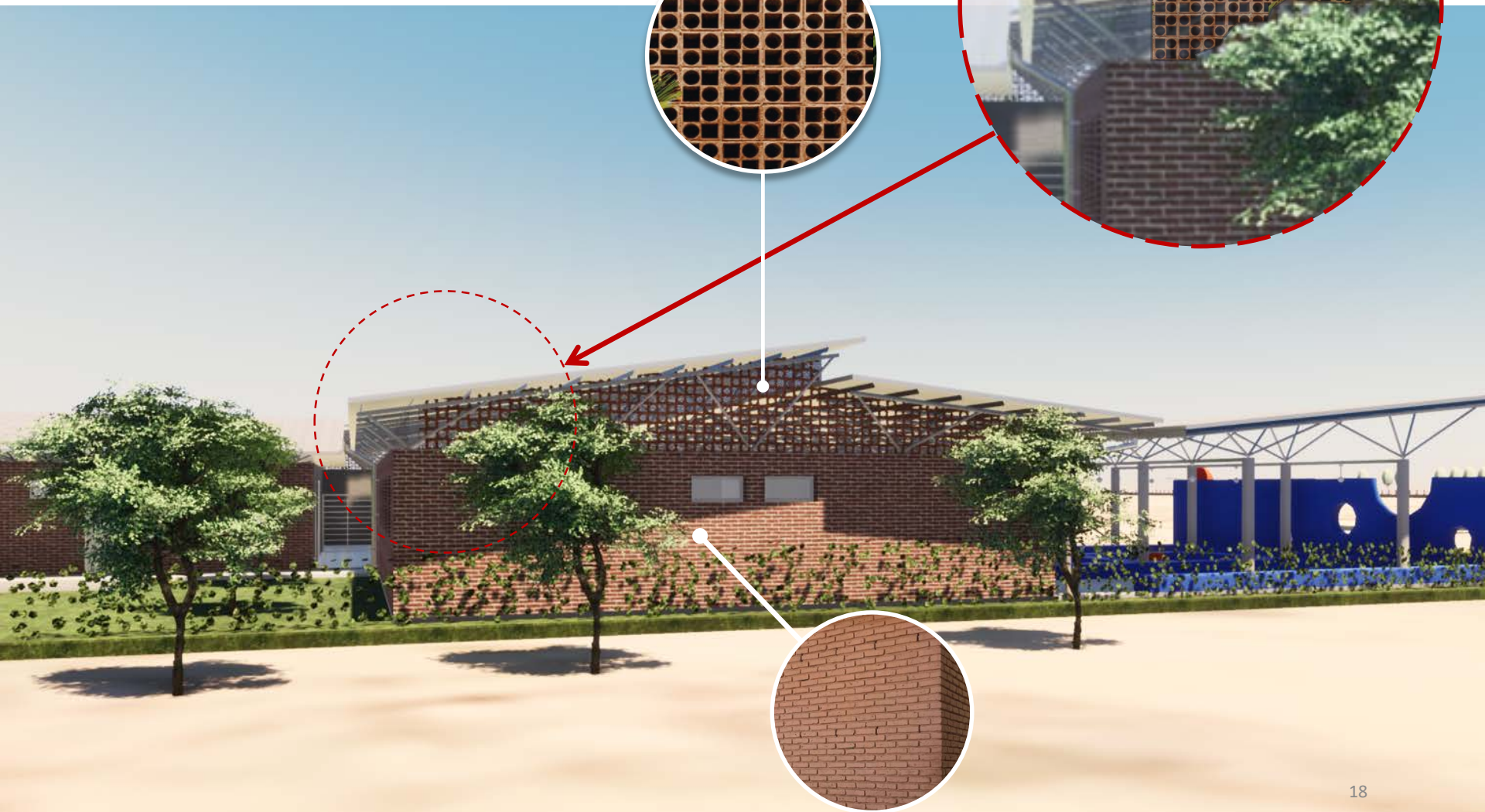
In the north and south facades, a chain link fence avoids the animals' nest. This metallic net will allow the ventilation above the concrete slab and preserve a sense of lightness of this covering with the metallic 'trees'.



Paediatric Unit

Roof improvement

East view- 1st phase



Paediatric Unit

Roof east facade

Outpatient east facade- 1st phase

