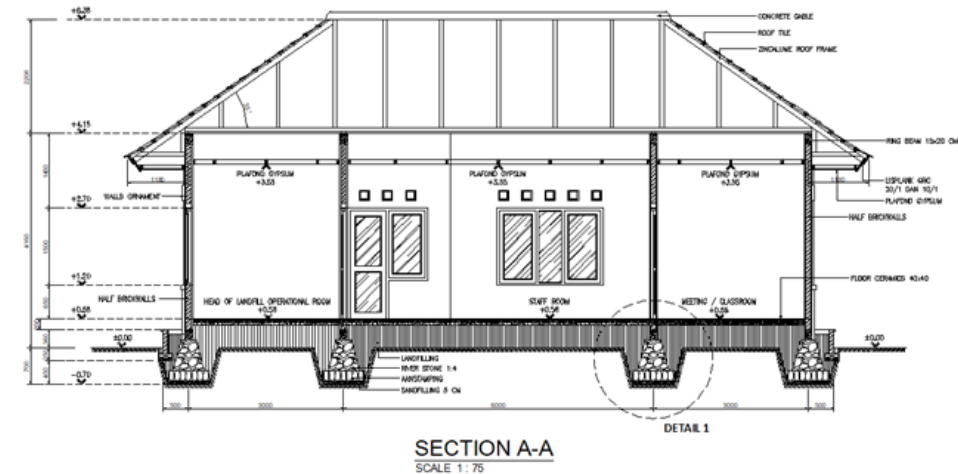
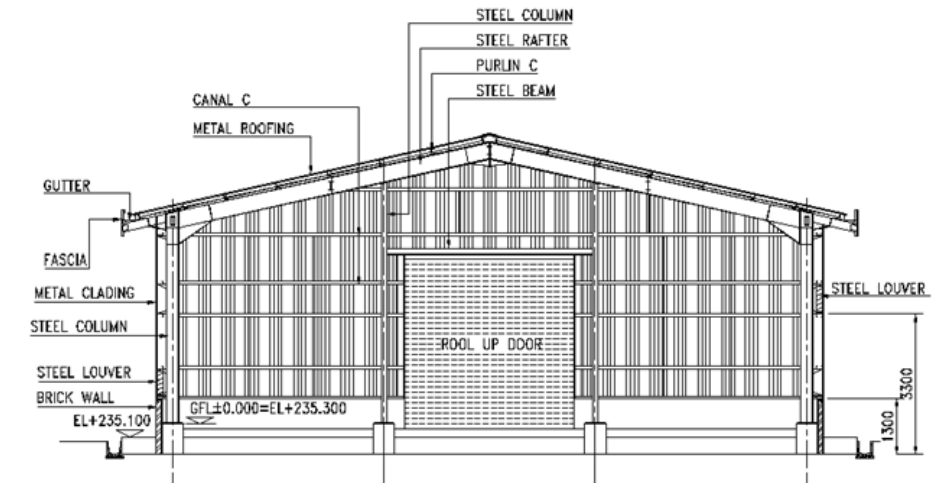


KFW



PETRA
Programme for Earthquake
and Tsunami Infrastructure
Reconstruction Assistance



TERMS OF REFERENCE

Review of BoQ (Quantity Survey Consultant) for Construction of Two Landfills & Supporting Facilities in Central Sulawesi

RFP/UNDP/PETRA/131382/012/2021 - March 2021

SUMMARY:



- PROJECT DESCRIPTION
- OBJECTIVE
- SCOPE OF SERVICES
- MAIN ACTIVITIES
- REFERENCE AND COMPLIANCE STANDARDS
- DURATION OF THE SERVICES

PROJECT DESCRIPTION



A. Palu – Kawatuna Landfill

DESCRIPTION	DIMENSION
<ul style="list-style-type: none">- Reconstruction of Leachate Treatment Plant- Rehabilitation of Cell 2 Leachate Collection System- Reshaping, capping & closure of cell 2- Construction of Cell 3 + Leachate Collection System- Landfill Gas Collection system- Site Drainage- Internal Access Roads- Perimeter Fence and Buffer Zone- Operational Office- Mechanical Workshop- Security Post- Material Recovery Facility- Water Supply- General Electrical & Power Upgrade	<ul style="list-style-type: none">- LTP = 2,000 m²- LCS Cell 2 = 4,500 m²- Area of Cell 2 = 12,000 m²- Cell 3 = 13,000 m²- LGC = 12 units- Drainage = 700 m- Roads = 1,100 m- Fence = 1,250 m- PO Office = 128 m²- MW = 96 m²- SP = 24 m²- MRF = 200 m²

PROJECT DESCRIPTION



B. Donggala – Kabonga Landfill

DESCRIPTION	DIMENSION
<ul style="list-style-type: none">- Rehabilitation of Leachate Collection System- Reshaping, capping & closure of existing cell- Construction of Cell 2 + Leachate Collection System- Landfill Gas Collection system- Site Drainage- Internal Access Roads- Perimeter Fence and Buffer Zone- Material Recovery Facility- Reconstruction of Leachate Treatment Plant- General Electrical & Power Upgrade	<ul style="list-style-type: none">- LCS = 3,500 m²- Area of Cell 2 = 3,600 m²- Cell 2 = 10,000 m²- LGC = 8 units- Drainage = 350 m- Roads = 400 m- Fence = 700 m- MRF = 200 m²

OBJECTIVE



To provide accurate and timely cost review and advice to the Bill of Quantity of Kawatuna and Kabonga landfills, in both pre contract and during contract implementation, to the PETRA Project Manager in order to ensure that the Project can be delivered within the available budget

The preceding description and outline of the scope of work constitutes a guideline only. It is up to the consultant to critically review the scope and the specific requirements of each object and then organize their strategy and approach to the necessary investigations, analyses, designs, etc. to deliver the required results.

SCOPE OF SERVICES



The duties of the consultant during the assignment shall comprise, but not be limited to the following services and activities:

1. Engaged to provide independent pre-contract up to post-contract cost management services to UNDP in accordance with the TOR.
2. Provide cost consultancy and contract administration service required by UNDP
3. Provide review and analysis of bills of quantities (BoQ) covering all the activities for the proposed measures and the activities for facilities in the two landfills

SCOPE OF SERVICES



4. Cost estimates adopting the standard construction rates used by the Design Consultant for the project areas as pre-agreed with UNDP project
5. Provide guidance and assistance in cost management to UNDP during the bidding process and evaluation of bids of the Civil works packages
6. Provide support to UNDP in cost management of contract administration in civil works contracts

The detail of scope of services can be found in the Term of References.

MAIN ACTIVITIES



1. Review of Detail Engineering Design
2. Review and Analysis of Bill of Quantities for both Landfills
3. Tender Process Support in Cost Management
4. Budget Analysis Support During Civil Works Implementation

REFERENCES AND COMPLIANCE STANDARDS



1. Government of Indonesia **GENERAL** standards

- Indonesian National Standard / Standar Nasional Indonesia (SNI)
- Law/UU No 28/2002 Concerning Buildings
- Daftar Standar Dan Pedoman – Bahan Konstruksi Bangunan dan Rekayasa Sipil:
- Peraturan Menteri PU Nomor: 45/ PRT/ M/2007 tentang Pedoman Teknis Pembangunan Bangunan Gedung Negara

REFERENCES AND COMPLIANCE STANDARDS



2. Law and Ministries Regulations:

- UU no 18 tahun 2008 tentang Pengelolaan Sampah
- PP nomor 81 tahun 2012 tentang Pengelolaan Sampah Rumah Tangga dan Sampah Sejenis Sampah Rumah Tangga
- Permendagri Nomor: 33 tahun 2010 tentang Pedoman Pengelolaan Sampah

3. UNDP

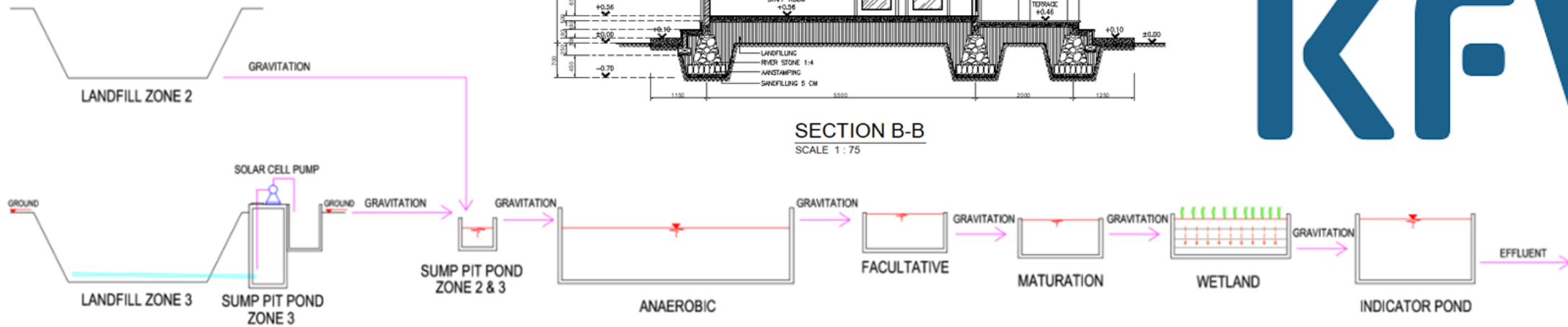
- Sulawesi Lombok PETRA – UNDP Proposal, 10 December 2018
- Environmental and Social Management Framework (ESMF) PETRA UNDP Jakarta April 2019

DURATION OF THE SERVICES



The total period of services in 5,5 months

NO.	TITLE	DELIVERABLES DURATION
1.0	Design Services	1,5 months
	Review of Detail Design, Bill of Quantities and ready for tendering.	
2.0	Pre-Construction and Bidding Support Services	2 months
	Provision of technical advice on financial evaluation during the bidding process	
3.0	Construction Supervision	2 months
	Assistance in cost management for the first 2 months of Construction Supervision	



PETRA
Programme for Earthquake
and Tsunami Infrastructure
Reconstruction Assistance

KFW

THANK YOU