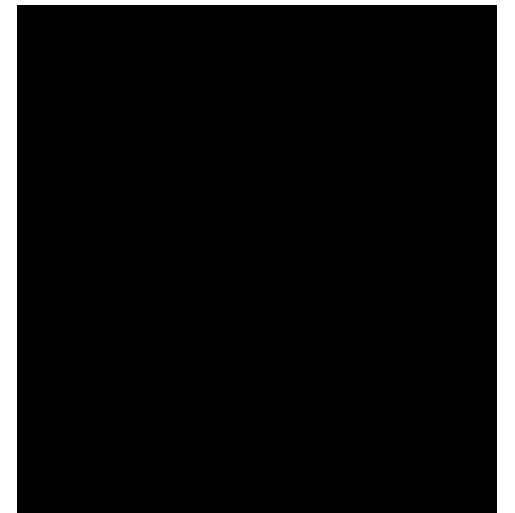
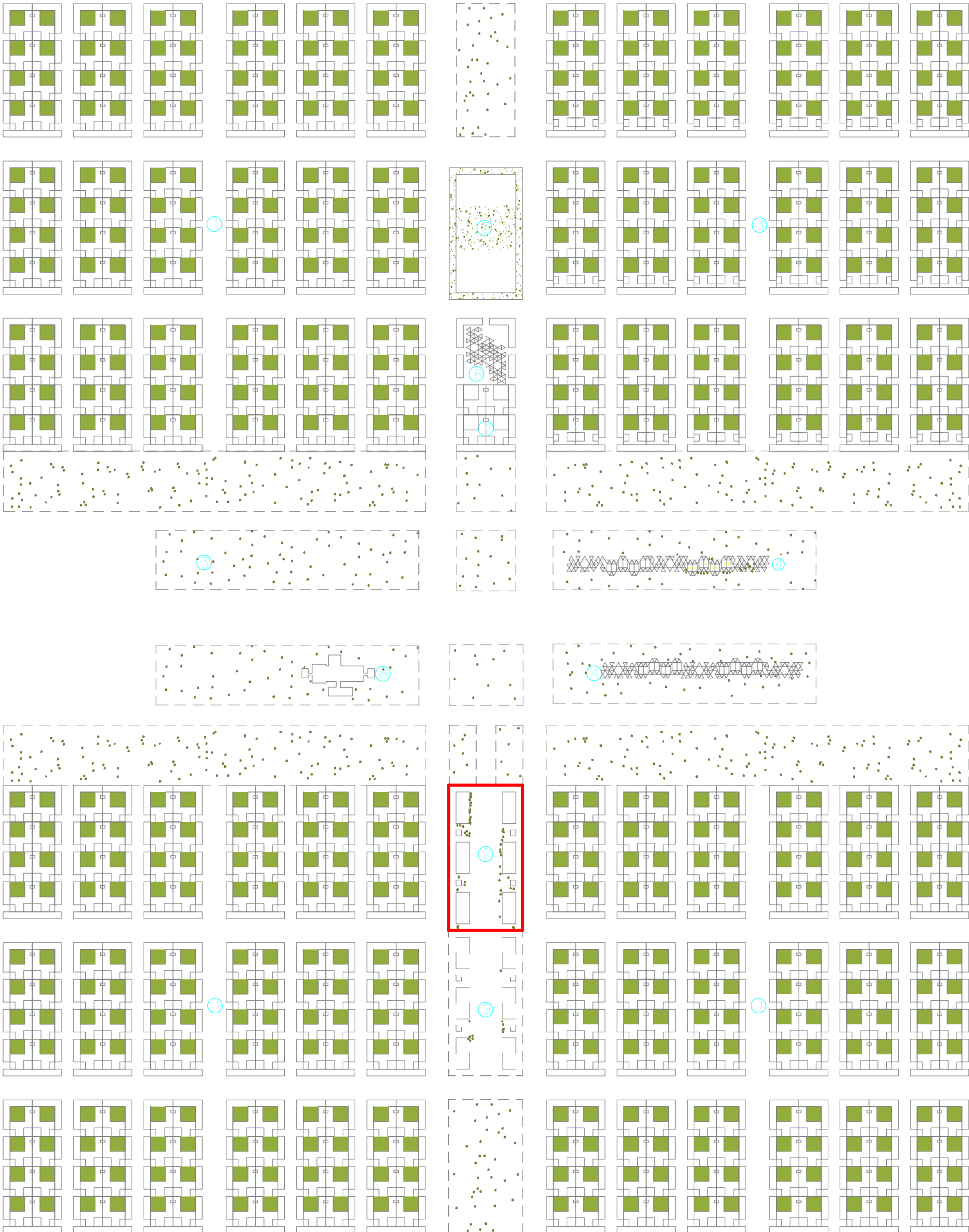


**HOMES FOR NGARANNAM,  
PRIMARY SCHOOL,  
MAFA LGA, BORNO.**

ISSUED FOR TENDER





1 BUILDING LOCATION ON MASTER PLAN  
1 : 3000

NOTE

Figured dimension must be taken in reference dimensions.

Contractor, sub-contractors and suppliers must verify all dimension on site before commencing any work or making any shop drawing.

All timber to be pressure-treated with anti-fungal and anti-infection on approved treatment.

The Architect accepts no responsibility for projects not supervised by any of its representatives

All Internal Doors to have 25mm undercut to avoid internal pressure build up

ISSUED FOR TENDER

KEY	
1	RESIDENTIAL BUILDING
2	PRIMARY SCHOOL
3	POLICE STATION
4	MARKET
5	MOSQUE
6	COMMUNITY CENTER
7	BULAMA HOUSE
8	HEALTH DISPENSARY
9	EXPANSION FOR SCHOOL

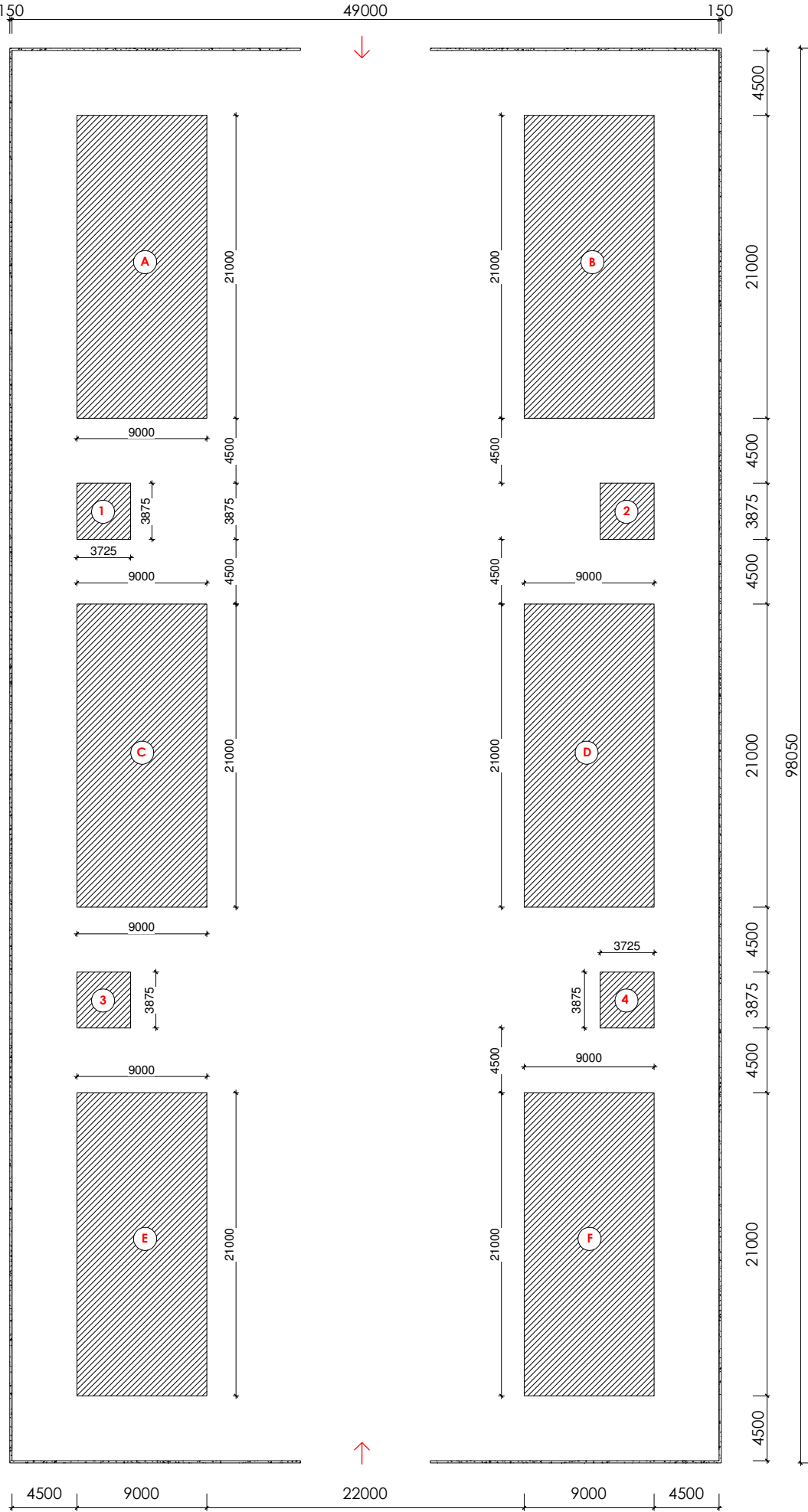
HOMES FOR NGARANNAM,  
MAFA LGA, BORNO.

BUILDING LOCATION ON MASTER PLAN

Scale: 1 : 3000

Date: MARCH, 2021

Drwg. No. A435-03-101	Suffix: O
--------------------------	--------------



1 MASTER PLAN  
1 : 400

# NOTE

Figured dimension must be taken in reference dimensions.

Contractor, sub-contractors and suppliers must verify all dimension on site before commencing any work or making any shop drawing.

All timber to be pressure-treated with anti-fungal and anti-infestation on approved treatment.

**The Architect accepts no responsibility for projects not supervised by any of its representatives**

All Internal Doors to have 25mm undercut to avoid internal pressure build up

ISSUED FOR TENDER

HOMES FOR NGARANNAM,  
MAFA LGA, BORNO.

BUILDING SITE PLAN

Scale: 1 : 400	Drawn by: MS
Date: MARCH, 2021	Checked by: TO
Drwg. No. A435-03-102	Suffix: O

NOTE

Figured dimension must be taken in reference dimensions.

Contractor, sub-contractors and suppliers must verify all dimension on site before commencing any work or making any shop drawing.

All timber to be pressure-treated with anti-fungal and anti-infestion on approved treatment.

The Architect accepts no responsibility for projects not supervised by any of its representatives

All Internal Doors to have 25mm undercut to avoid internal pressure build up

ISSUED FOR TENDER

SPECIFICATION

FLOOR FINISH - FF

FF 1.1 50mm SCREED TO CONCRETE SLAB INSTALLED TO A SHINE.

WALL FINISH - WF

WF 3.1 12mm CEMENT SCREED FINISH WITH TWO COATS OF SHEEN FINISH PAINT. COLOUR TO ARCHITECT'S FUTHER SPECIFICATION.

3.2 12mm CEMENT SCREED FINISH WITH AVERAGE GUAGE TYROLEAN FINISH WITH TWO COATS OF WEATHER PROOF PAINT TO ARCHITECT'S FURTHER SPECIFICATION.

3.3 12mm CEMENT SCREED FINISH WITH WEATHER PROOF PAINT TO ARCHITECT'S FURTHER SPECIFICATIONS AND ARTIST MURAL.

CEILING FINISH - CF

CF 4.1 WILLOW REED BAMBOO TO BE INSTALLED TO TIMBER NOGGINS.

ROOF FINISH - RF

RF 5.1 0.5mm LONG SPAN ALUMINUM SHEETS. COLOUR TO ARCHITECT'S FURTHER SPECIFICATION.

FASCIA BOARD - FB

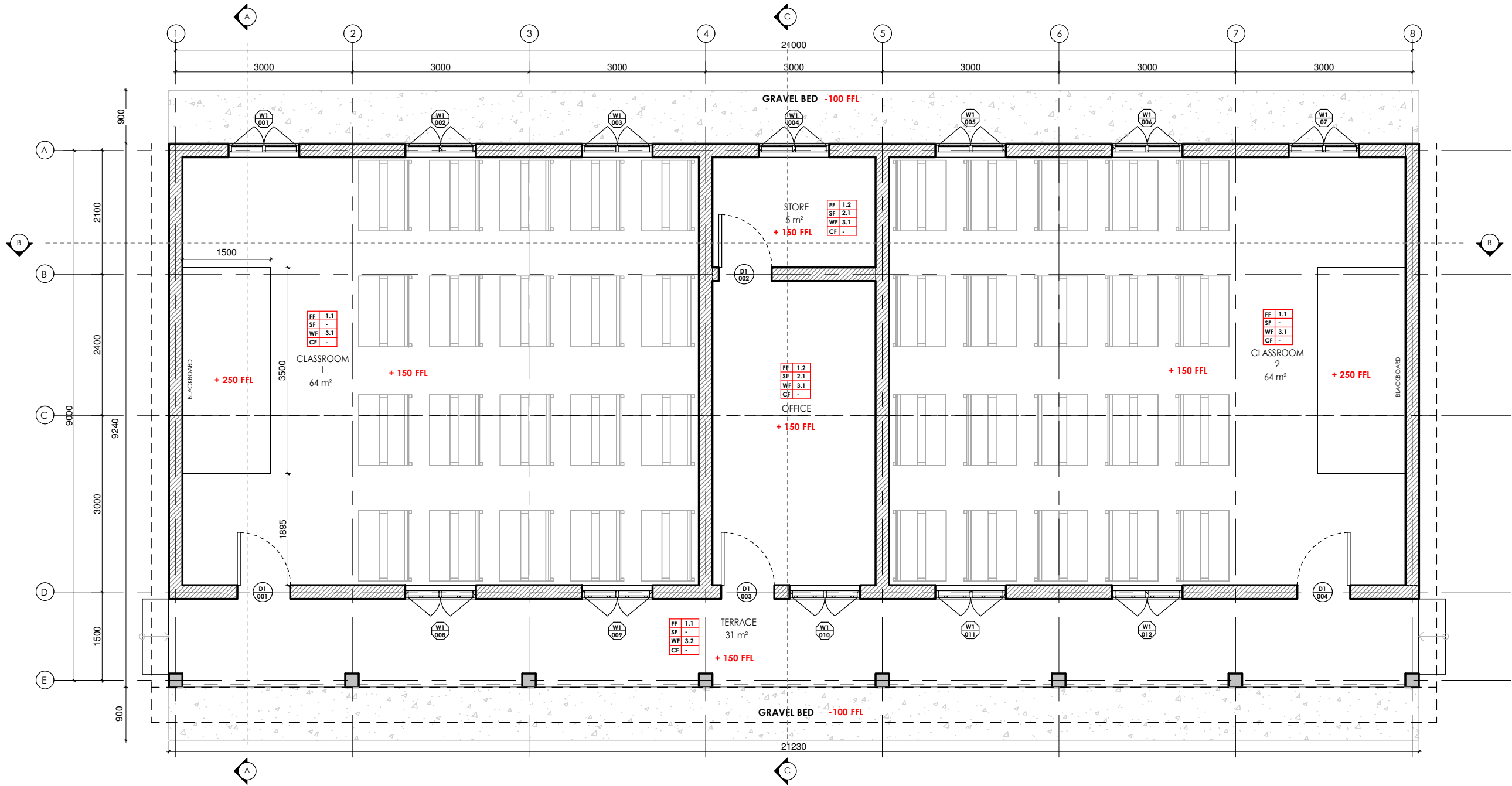
FB 6.1 300x 25mm HARDWOOD PLANK FINISHED WITH GLOSS PAINT. COLOUR TO ARCHITECT'S FURTHER SPECIFICATION

PRIMARY SCHOOL  
GROUND FLOOR PLAN

Scale: 1 : 75

Date: MARCH, 2021

Drwg. No. A435-03-201  
Suffix: O



1 GROUND FLOOR PLAN  
1 : 75

NOTE

Figured dimension must be taken in reference dimensions.

Contractor, sub-contractors and suppliers must verify all dimension on site before commencing any work or making any shop drawing.

All timber to be pressure-treated with anti-fungal and anti-infection on approved treatment.

The Architect accepts no responsibility for projects not supervised by any of its representatives

All Internal Doors to have 25mm undercut to avoid internal pressure build up

ISSUED FOR TENDER

SPECIFICATION

FLOOR FINISH - FF

FF 1.1 50mm SCREED TO CONCRETE SLAB INSTALLED TO A SHINE.

WALL FINISH - WF

- WF 3.1 12mm CEMENT SCREED FINISH WITH TWO COATS OF SHEEN FINISH PAINT. COLOUR TO ARCHITECT'S FUTHER SPECIFICATION.
- 3.2 12mm CEMENT SCREED FINISH WITH AVERAGE GUAGE TYROLEAN FINISH WITH TWO COATS OF WEATHER PROOF PAINT TO ARCHITECT'S FURTHER SPECIFICATION.
- 3.3 12mm CEMENT SCREED FINISH WITH WEATHER PROOF PAINT TO ARCHITECT'S FURTHER SPECIFICATIONS AND ARTIST MURAL.

CEILING FINISH - CF

CF 4.1 WILLOW REED BAMBOO TO BE INSTALLED TO TIMBER NOGGINS.

ROOF FINISH - RF

RF 5.1 0.5mm LONG SPAN ALUMINUM SHEETS. COLOUR TO ARCHITECT'S FURTHER SPECIFICATION.

FASCIA BOARD - FB

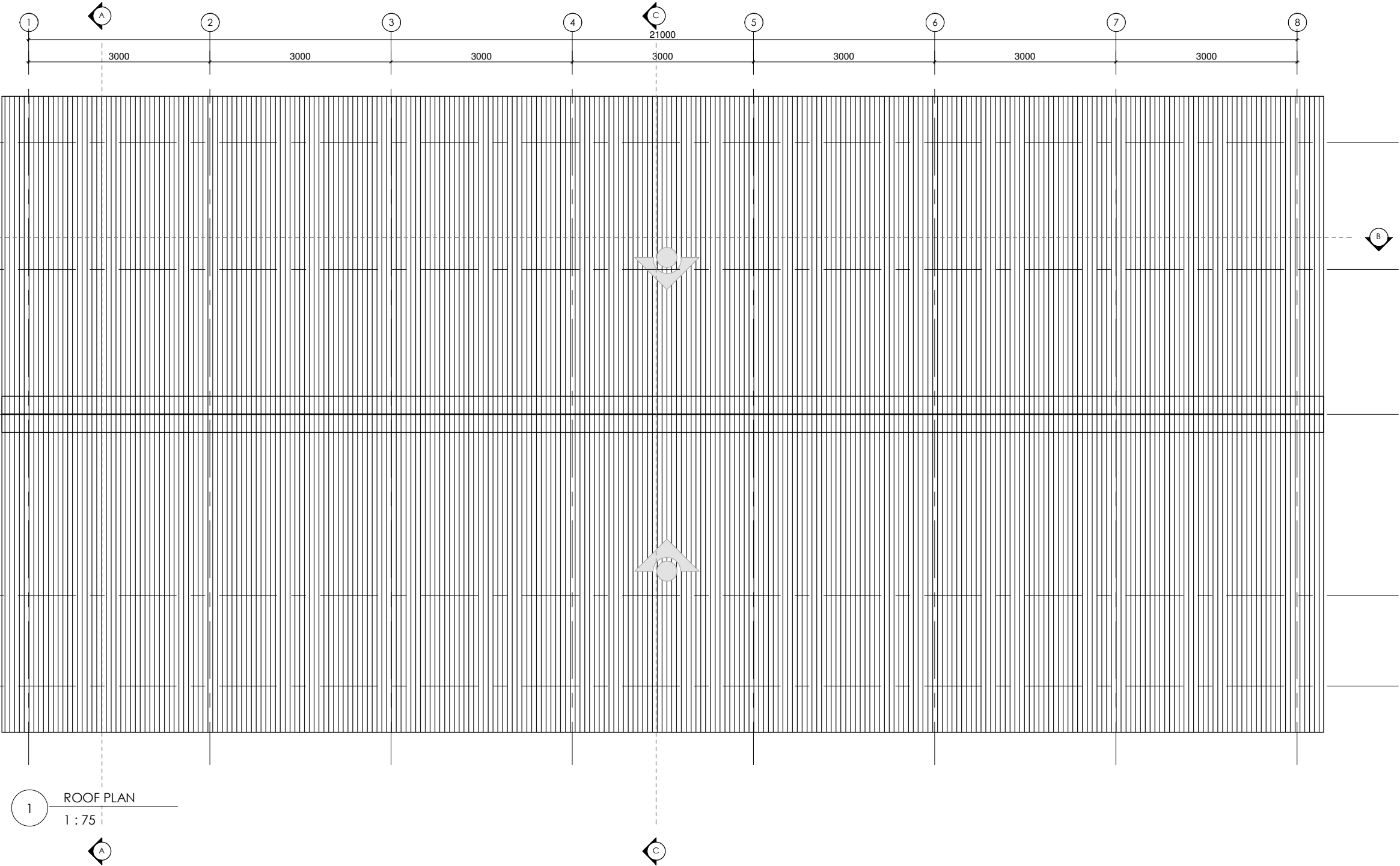
FB 6.1 300x 25mm HARDWOOD PLANK FINISHED WITH GLOSS PAINT. COLOUR TO ARCHITECT'S FURTHER SPECIFICATION

PRIMARY SCHOOL  
ROOF PLAN

Scale: 1 : 75

Date: MARCH, 2021

Drwg. No. A435-03-202  
Suffix: O



NOTE

Figured dimension must be taken in reference dimensions.

Contractor, sub-contractors and suppliers must verify all dimension on site before commencing any work or making any shop drawing.

All timber to be pressure-treated with anti-fungal and anti-infection on approved treatment.

The Architect accepts no responsibility for projects not supervised by any of its representatives

All Internal Doors to have 25mm undercut to avoid internal pressure build up

ISSUED FOR TENDER

SPECIFICATION

FLOOR FINISH - FF

FF 1.1 50mm SCREED TO CONCRETE SLAB INSTALLED TO A SHINE.

WALL FINISH - WF

WF 3.1 12mm CEMENT SCREED FINISH WITH TWO COATS OF SHEEN FINISH PAINT. COLOUR TO ARCHITECT'S FUTHER SPECIFICATION.

3.2 12mm CEMENT SCREED FINISH WITH AVERAGE GUAGE TYROLEAN FINISH WITH TWO COATS OF WEATHER PROOF PAINT TO ARCHITECT'S FURTHER SPECIFICATION.

3.3 12mm CEMENT SCREED FINISH WITH WEATHER PROOF PAINT TO ARCHITECT'S FURTHER SPECIFICATIONS AND ARTIST MURAL.

CEILING FINISH - CF

CF 4.1 WILLOW REED BAMBOO TO BE INSTALLED TO TIMBER NOGGINS.

ROOF FINISH - RF

RF 5.1 0.5mm LONG SPAN ALUMINUM SHEETS. COLOUR TO ARCHITECT'S FURTHER SPECIFICATION.

FASCIA BOARD - FB

FB 6.1 300x 25mm HARDWOOD PLANK FINISHED WITH GLOSS PAINT. COLOUR TO ARCHITECT'S FURTHER SPECIFICATION

PRIMARY SCHOOL  
SECTION A-A  
SECTION B-B

Scale: 1 : 75

Date: MARCH, 2021

Drwg. No. A435-03-203  
Suffix: O

0.5mm SYNTHETIC WOVEN MAT ATTACHED TO PURLINS. COLOUR TO ARCHITECTS FURTHER SPECIFICATION

0.5mm LONG SPAN ALUMINUM SHEETS. COLOUR TO ARCHITECT'S FURTHER SPECIFICATION.

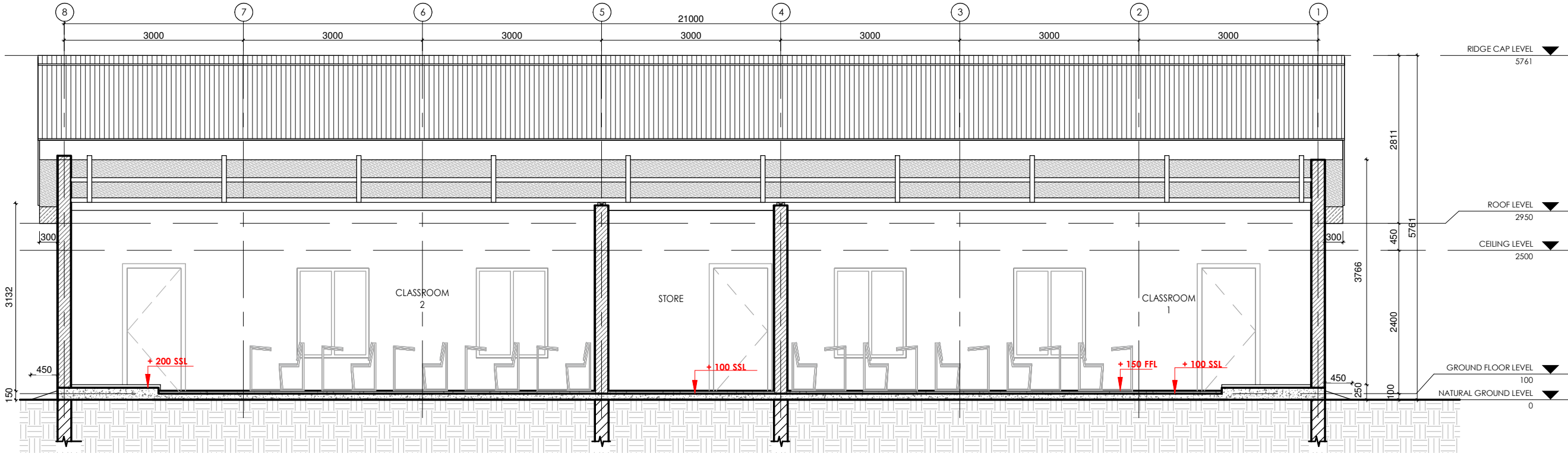
300x 25mm HARDWOOD PLANK FINISHED WITH GLOSS PAINT. COLOUR TO ARCHITECT'S FURTHER SPECIFICATION

50mm SCREED TO CONCRETE SLAB INSTALLED TO A SHINE.

GRAVEL BED

1200mm BY 3217mm BLACK BOARD FURTHER TO CLASSROOM STANDARD REQUIREMENTS

1 SECTION A-A  
1 : 75



2 SECTION B-B  
1 : 75

## NOTE

figured dimension must be taken in reference dimensions.

**Contractor, sub-contractors and suppliers must verify all dimension on site before commencing any work or making any shop drawing.**

All timber to be pressure-treated with anti-fungal and anti-infestation on approved treatment.

**The Architect accepts no responsibility for projects not supervised by any of its representatives**

**All Internal Doors to have 25mm undercut to avoid internal pressure build up**

**ISSUED FOR TENDER**

## SPECIFICATION

FLOOR FINISH - FF

**FF 1.1 50mm SCREED TO CONCRETE SLAB  
INSTALLED TO A SHINE.**

**WALL FINISH - WF**

**WF 3.1 12mm CEMENT SCREED FINISH  
WITH TWO COATS OF SHEEN FINISH  
PAINT. COLOUR TO ARCHITECT'S  
FUTHER SPECIFICATION.**

**3.2 12mm CEMENT SCREED FINISH WITH AVERAGE GUAGE TYROLEAN FINISH WITH TWO COATS OF WEATHER PROOF PAINT TO ARCHITECT'S FURTHER SPECIFICATION.**

**3.3 12mm CEMENT SCREED FINISH  
WITH WEATHER PROOF PAINT TO  
ARCHITECT'S FURTHER  
SPECIFICATIONS AND ARTIST  
MURAL.**

CEILING FINISH - CF

**CF 4.1 WILLOW REED BAMBOO TO BE  
INSTALLED TO TIMBER NOGGINS.**

ROOF FINISH - RF

**RF 5.1 0.5mm LONG SPAN ALUMINUM SHEETS. COLOUR TO ARCHITECT'S FURTHER SPECIFICATION.**

FASCIA BOARD - FB

**B 6.1 300x 25mm HARDWOOD PLANK  
FINISHED WITH GLOSS PAINT.  
COLOUR TO ARCHITECT'S FURTHER  
SPECIFICATION**

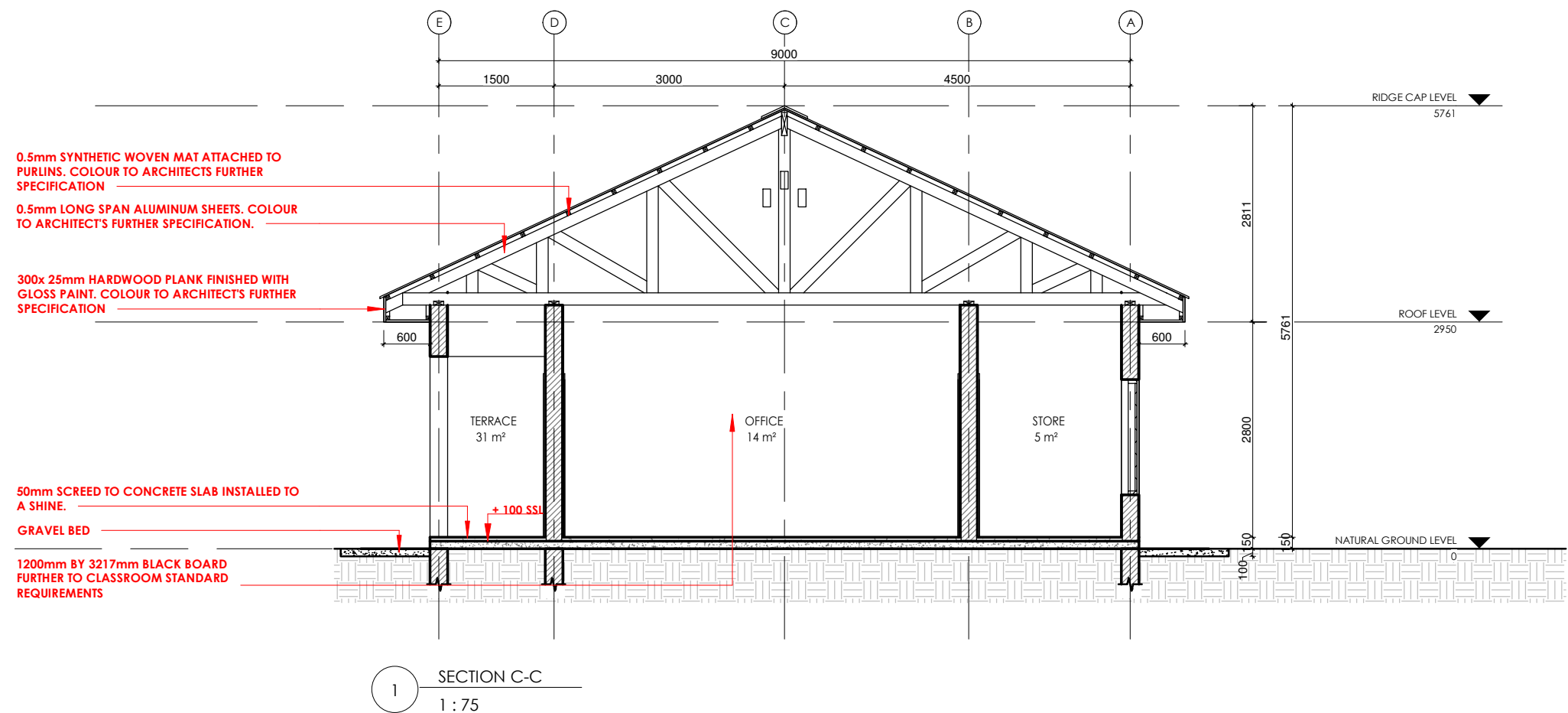
PRIMARY SCHOOL  
OFFICE SECTION

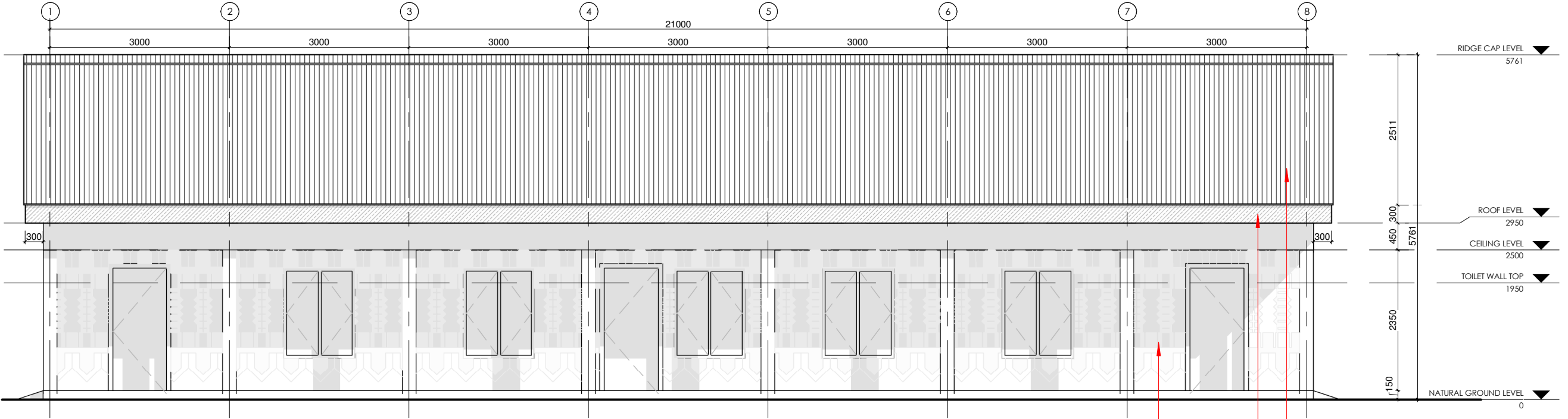
scale: 1 : 75

ate: MARCH, 2021

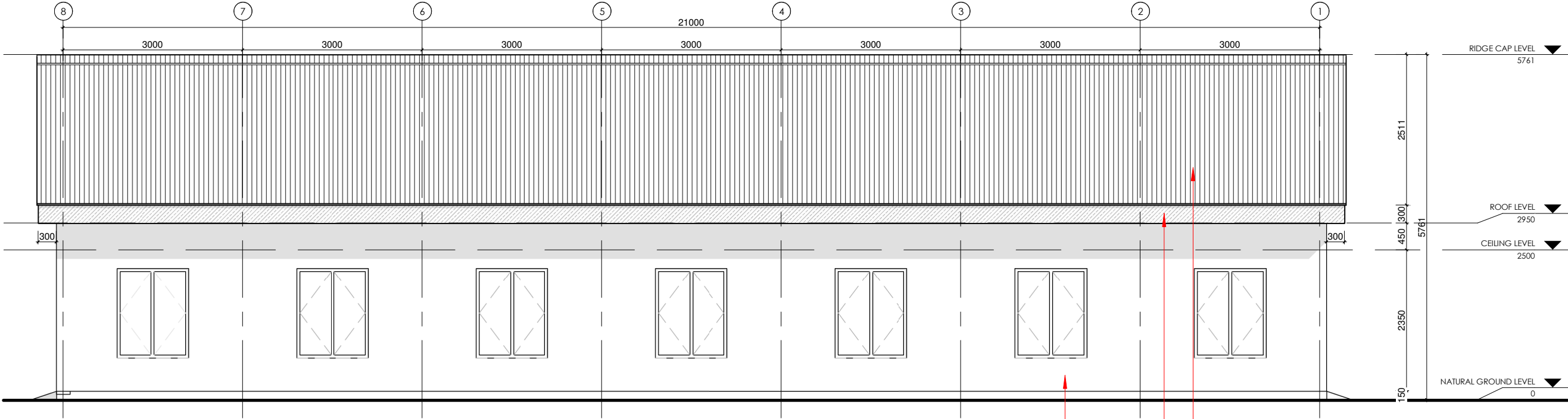
rwg. No.  
435-03-203a

**Suffix:**





1 FRONT ELEVATION  
1 : 75



2 REAR ELEVATION  
1 : 75

0.5mm LONG SPAN ALUMINUM SHEETS. COLOUR TO ARCHITECT'S FURTHER SPECIFICATION.

300x 25mm HARDWOOD PLANK FINISHED WITH GLOSS PAINT. COLOUR TO ARCHITECT'S FURTHER SPECIFICATION

12mm CEMENT SCREED FINISH WITH WEATHER PROOF PAINT TO ARCHITECT'S FURTHER SPECIFICATIONS. MURAL PAINTING TO BE HANDLED AS SPECIALIST ART ITEM.

0.5mm LONG SPAN ALUMINUM SHEETS. COLOUR TO ARCHITECT'S FURTHER SPECIFICATION.

300x 25mm HARDWOOD PLANK FINISHED WITH GLOSS PAINT. COLOUR TO ARCHITECT'S FURTHER SPECIFICATION

12mm CEMENT SCREED FINISH WITH AVERAGE GUAGE TYROLEAN FINISH WITH TWO COATS OF WEATHER PROOF PAINT TO ARCHITECT'S FURTHER SPECIFICATION.

## NOTE

Figured dimension must be taken in reference dimensions.

Contractor, sub-contractors and suppliers must verify all dimension on site before commencing any work or making any shop drawing.

All timber to be pressure-treated with anti-fungal and anti-infection on approved treatment.

**The Architect accepts no responsibility for projects not supervised by any of its representatives**

All Internal Doors to have 25mm undercut to avoid internal pressure build up

ISSUED FOR TENDER	
SPECIFICATION	
FLOOR FINISH - FF	
FF 1.1	50mm SCREED TO CONCRETE SLAB INSTALLED TO A SHINE.
WALL FINISH - WF	
WF 3.1	12mm CEMENT SCREED FINISH WITH TWO COATS OF SHEEN FINISH PAINT. COLOUR TO ARCHITECT'S FUTHER SPECIFICATION.
3.2	12mm CEMENT SCREED FINISH WITH AVERAGE GUAGE TYROLEAN FINISH WITH TWO COATS OF WEATHER PROOF PAINT TO ARCHITECT'S FURTHER SPECIFICATION.
3.3	12mm CEMENT SCREED FINISH WITH WEATHER PROOF PAINT TO ARCHITECT'S FURTHER SPECIFICATIONS AND ARTIST MURAL.
CEILING FINISH - CF	
CF 4.1	WILLOW REED BAMBOO TO BE INSTALLED TO TIMBER NOGGINS.
ROOF FINISH - RF	
RF 5.1	0.5mm LONG SPAN ALUMINUM SHEETS. COLOUR TO ARCHITECT'S FURTHER SPECIFICATION.
FASCIA BOARD - FB	
FB 6.1	300x 25mm HARDWOOD PLANK FINISHED WITH GLOSS PAINT. COLOUR TO ARCHITECT'S FURTHER SPECIFICATION

PRIMARY SCHOOL  
FRONT ELEVATION  
REAR ELEVATION

Scale: 1 : 75

Date: MARCH, 2021

Drwg. No. A435-03-204  
Suffix: O

NOTE

Figured dimension must be taken in preference dimensions.

Contractor, sub-contractors and suppliers must verify all dimension on site before commencing any work or making any shop drawing.

All timber to be pressure-treated with anti-fungal and anti-infection on approved treatment.

**The Architect accepts no responsibility for projects not supervised by any of its representatives**

All Internal Doors to have 25mm undercut to avoid internal pressure build up

ISSUED FOR TENDER

SPECIFICATION

FLOOR FINISH - FF

FF 1.1 50mm SCREED TO CONCRETE SLAB INSTALLED TO A SHINE.

WALL FINISH - WF

- WF 3.1 12mm CEMENT SCREED FINISH WITH TWO COATS OF SHEEN FINISH PAINT. COLOUR TO ARCHITECT'S FUTHER SPECIFICATION.
- 3.2 12mm CEMENT SCREED FINISH WITH AVERAGE GUAGE TYROLEAN FINISH WITH TWO COATS OF WEATHER PROOF PAINT TO ARCHITECT'S FURTHER SPECIFICATION.
- 3.3 12mm CEMENT SCREED FINISH WITH WEATHER PROOF PAINT TO ARCHITECT'S FURTHER SPECIFICATIONS AND ARTIST MURAL.

CEILING FINISH - CF

CF 4.1 WILLOW REED BAMBOO TO BE INSTALLED TO TIMBER NOGGINS.

ROOF FINISH - RF

RF 5.1 0.5mm LONG SPAN ALUMINUM SHEETS. COLOUR TO ARCHITECT'S FURTHER SPECIFICATION.

FASCIA BOARD - FB

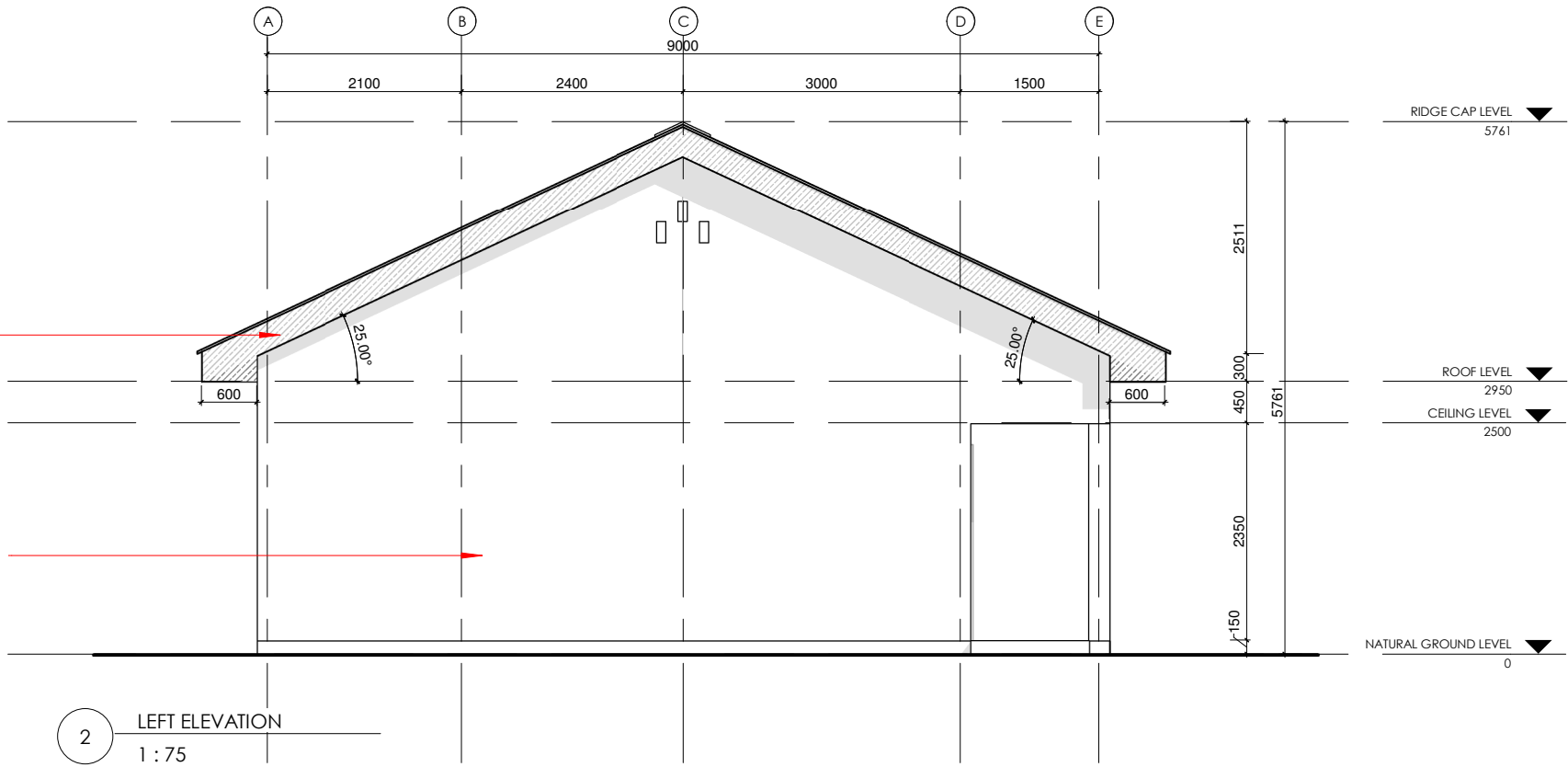
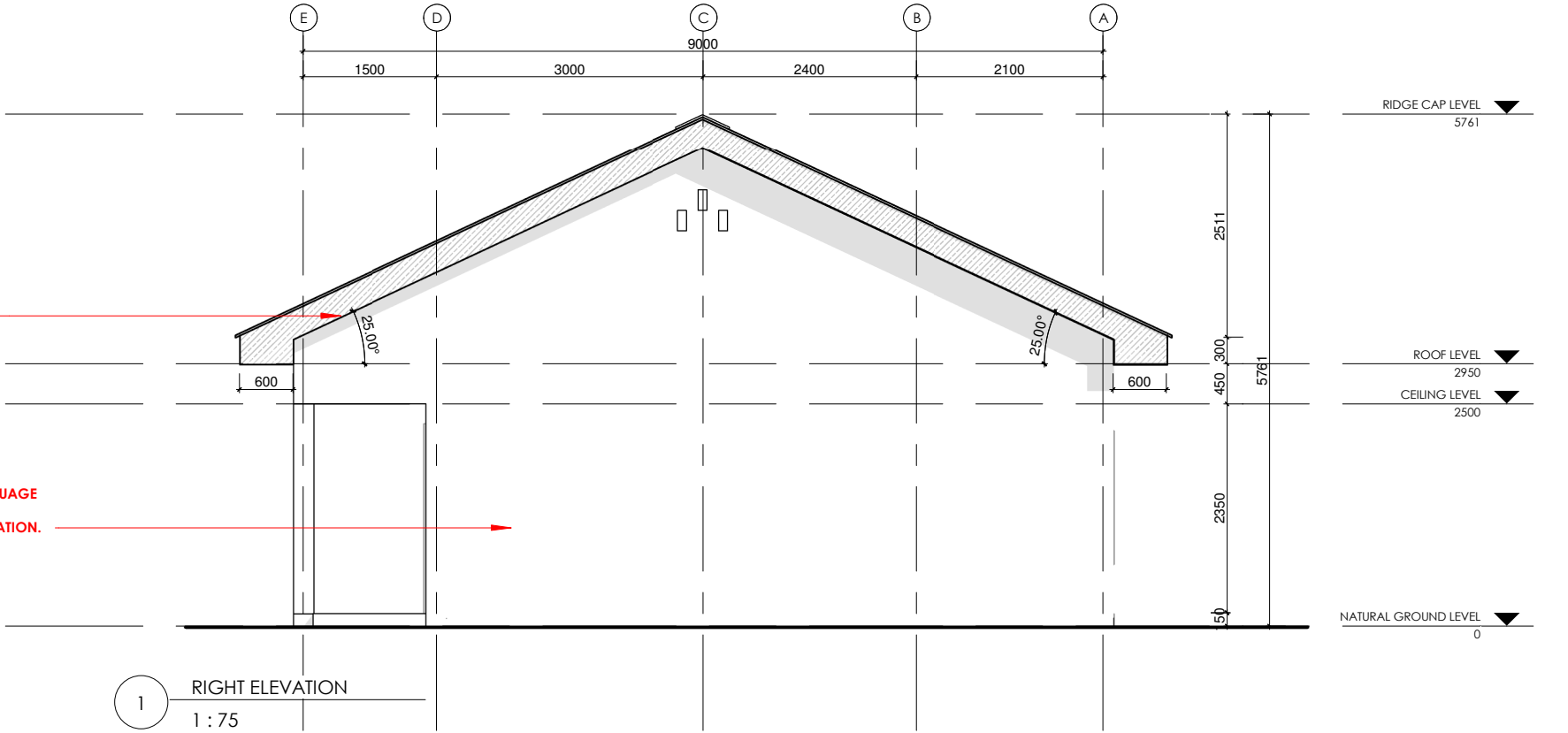
FB 6.1 300x 25mm HARDWOOD PLANK FINISHED WITH GLOSS PAINT. COLOUR TO ARCHITECT'S FURTHER SPECIFICATION

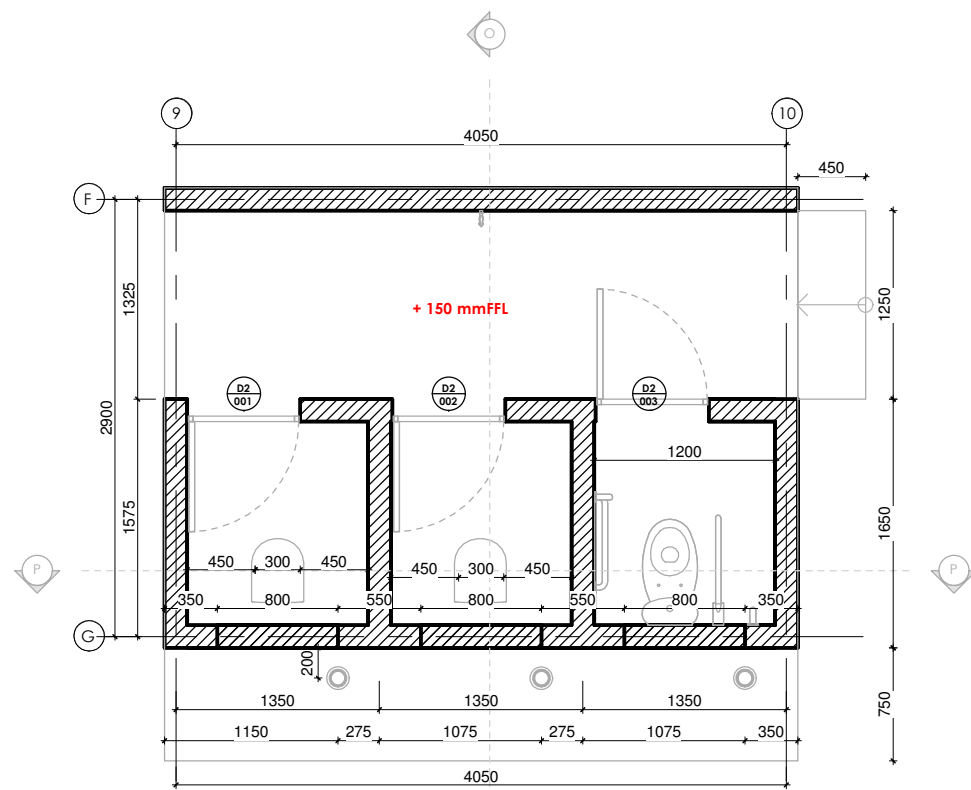
PRIMARY SCHOOL:  
LEFT ELEVATION  
RIGHT ELEVATION

Scale: 1 : 75

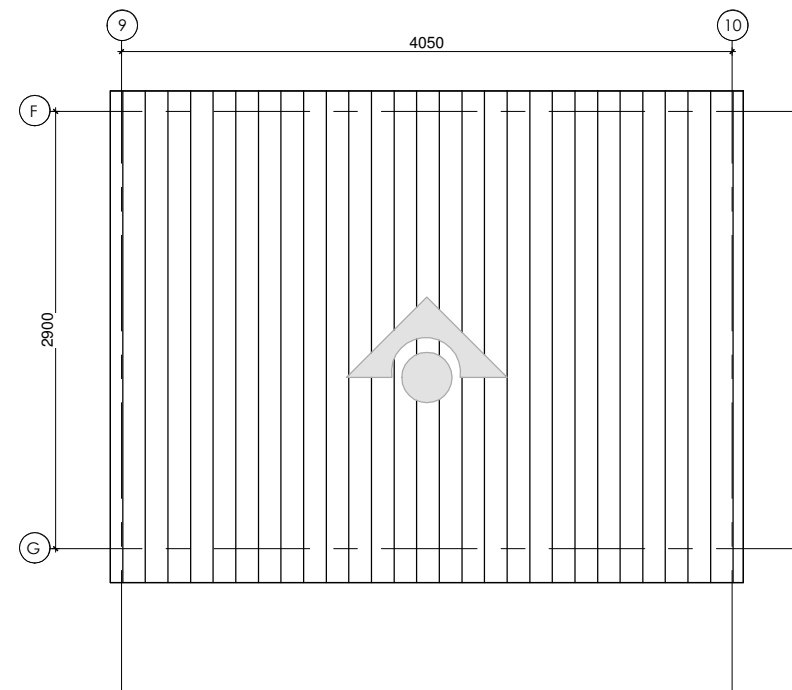
Date: MARCH, 2021

Drwg. No. A435-03-205  
Suffix: O

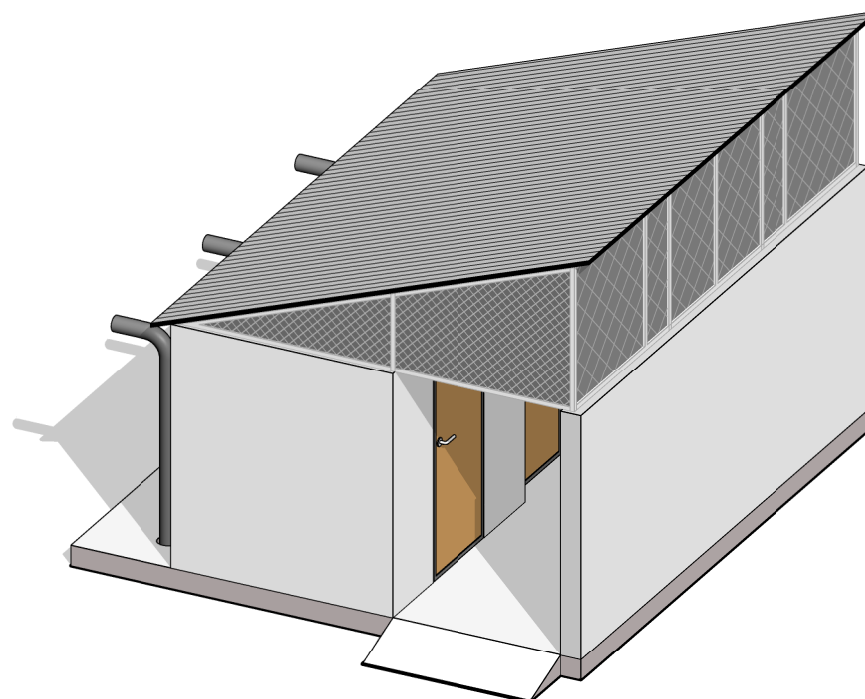




1 TOILET BLOCK GROUND FLOOR PLAN  
1 : 50



2 TOILET BLOCK ROOF PLAN  
1 : 50



3 3D VIEW OF TOILET BLOCK

## NOTE

Figured dimension must be taken in reference dimensions.

Contractor, sub-contractors and suppliers must verify all dimension on site before commencing any work or making any shop drawing.

All timber to be pressure-treated with anti-fungal and anti-infection on approved treatment.

**The Architect accepts no responsibility for projects not supervised by any of its representatives**

All Internal Doors to have 25mm undercut to avoid internal pressure build up

### ISSUED FOR TENDER

#### SPECIFICATION

##### FLOOR FINISH - FF

FF 1.1 50mm SCREED TO CONCRETE SLAB INSTALLED TO A SHINE.

##### WALL FINISH - WF

WF 3.1 12mm CEMENT SCREED FINISH WITH TWO COATS OF SHEEN FINISH PAINT. COLOUR TO ARCHITECT'S FUTHER SPECIFICATION.

3.2 12mm CEMENT SCREED FINISH WITH AVERAGE GUAGE TYROLEAN FINISH WITH TWO COATS OF WEATHER PROOF PAINT TO ARCHITECT'S FUTHER SPECIFICATION.

3.3 12mm CEMENT SCREED FINISH WITH WEATHER PROOF PAINT TO ARCHITECT'S FUTHER SPECIFICATIONS AND ARTIST MURAL.

##### CEILING FINISH - CF

CF 4.1 WILLOW REED BAMBOO TO BE INSTALLED TO TIMBER NOGGINS.

##### ROOF FINISH - RF

RF 5.1 0.5mm LONG SPAN ALUMINUM SHEETS. COLOUR TO ARCHITECT'S FUTHER SPECIFICATION.

##### FASCIA BOARD - FB

FB 6.1 300x 25mm HARDWOOD PLANK FINISHED WITH GLOSS PAINT. COLOUR TO ARCHITECT'S FUTHER SPECIFICATION

LATRINE  
GROUND FLOOR PLAN  
ROOF PLAN

Scale: 1 : 50

Date: MARCH, 2021

Drwg. No. A435-03-206  
Suffix: O

NOTE

Figured dimension must be taken in reference dimensions.

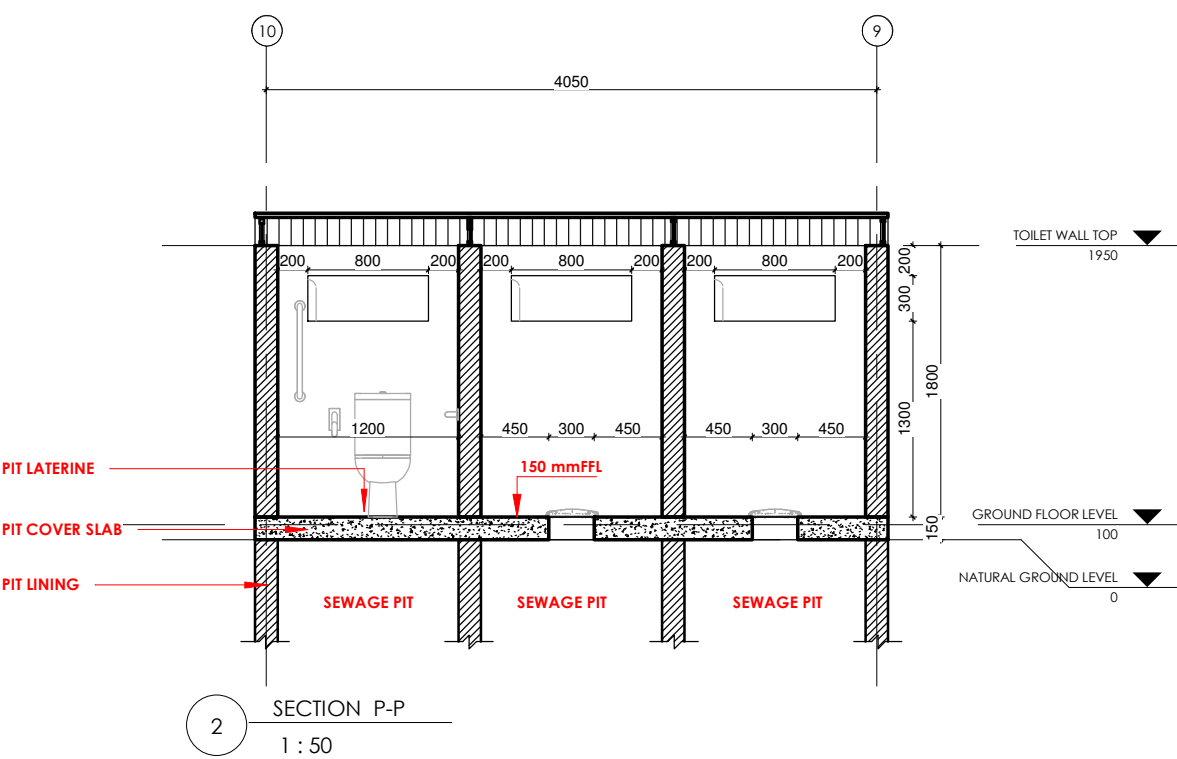
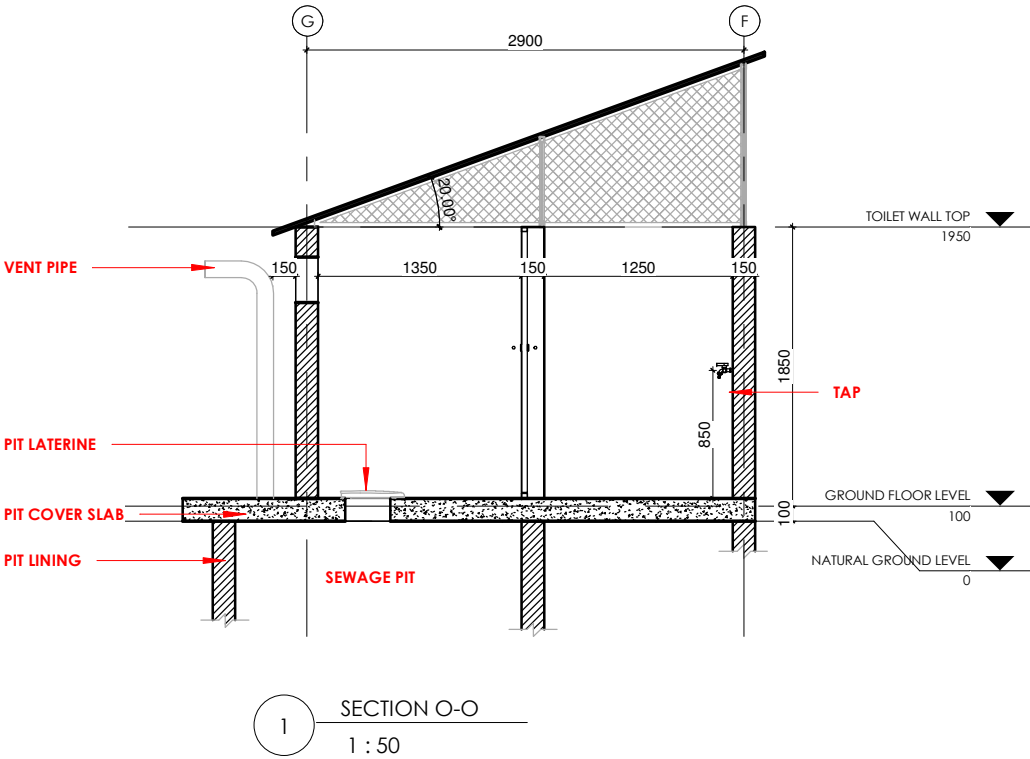
Contractor, sub-contractors and suppliers must verify all dimension on site before commencing any work or making any shop drawing.

All timber to be pressure-treated with anti-fungal and anti-infestion on approved treatment.

**The Architect accepts no responsibility for projects not supervised by any of its representatives**

All Internal Doors to have 25mm undercut to avoid internal pressure build up

ISSUED FOR TENDER



NOTE

Figured dimension must be taken in reference dimensions.

Contractor, sub-contractors and suppliers must verify all dimension on site before commencing any work or making any shop drawing.

All timber to be pressure-treated with anti-fungal and anti-infestation on approved treatment.

The Architect accepts no responsibility for projects not supervised by any of its representatives

All Internal Doors to have 25mm undercut to avoid internal pressure build up

ISSUED FOR TENDER

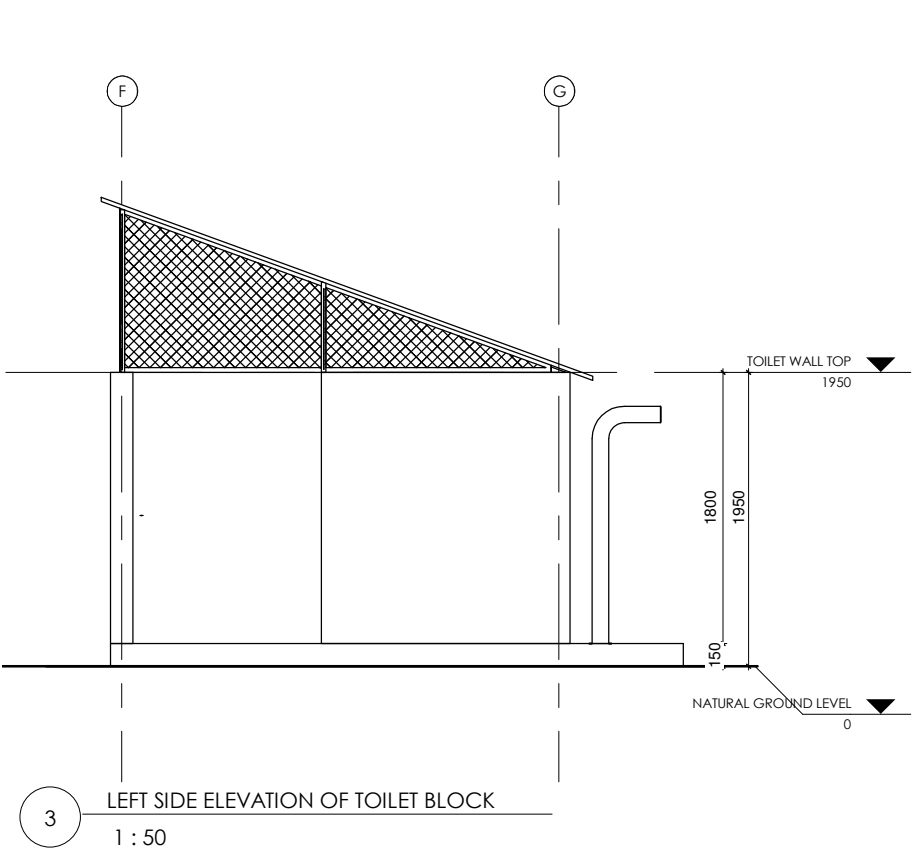
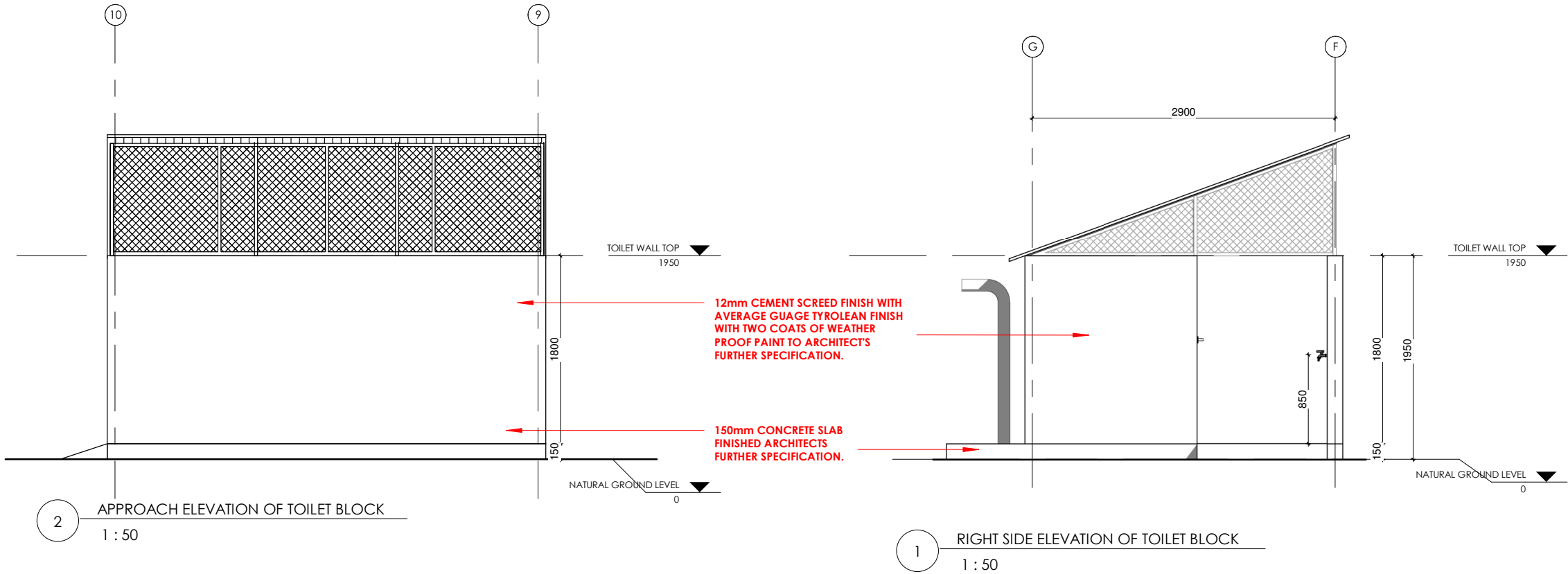
HOMES FOR NGARANNAM,  
MAFA LGA, BORNO.

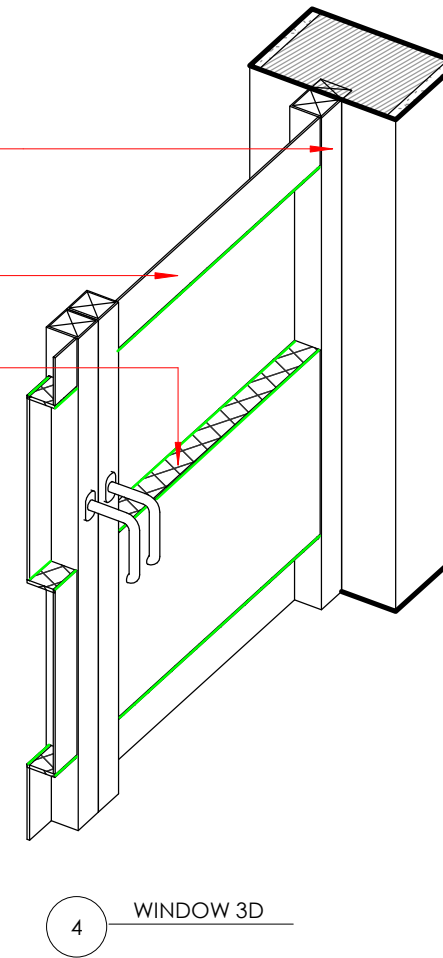
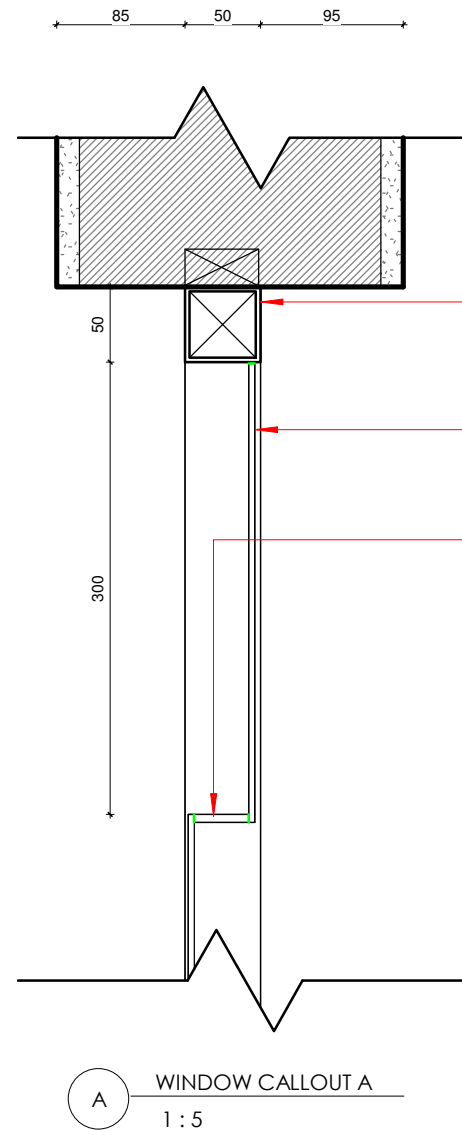
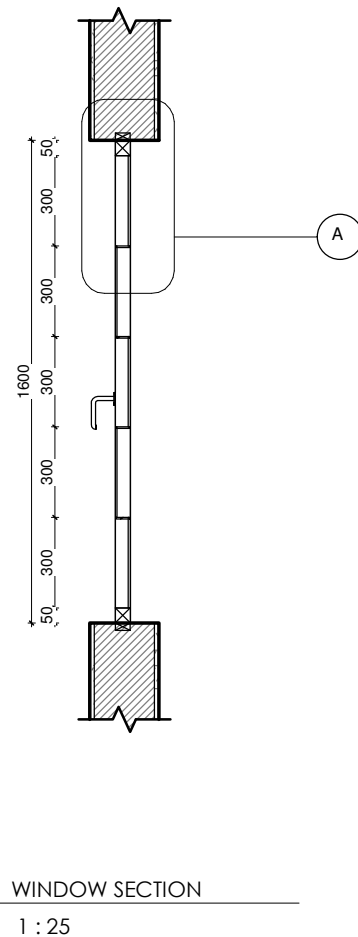
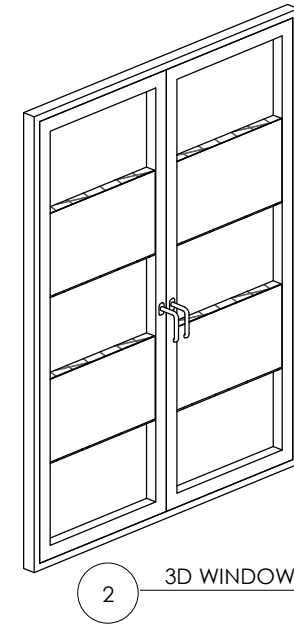
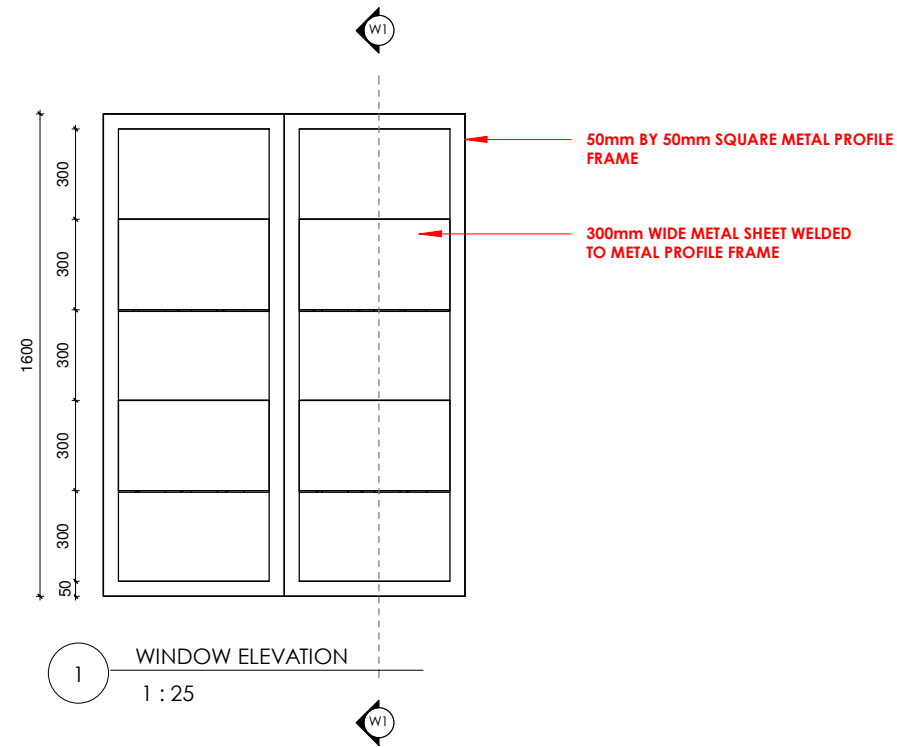
LATRINE \_ FRONT, REAR, LEFT & RIGHT  
ELEVATION

Scale: 1 : 50

Date: MARCH, 2021

Drwg. No. A435-03-208  
Suffix: O





## NOTE

Figured dimension must be taken in reference dimensions.

Contractor, sub-contractors and suppliers must verify all dimension on site before commencing any work or making any shop drawing.

All timber to be pressure-treated with anti-fungal and anti-infection on approved treatment.

**The Architect accepts no responsibility for projects not supervised by any of its representatives**

All Internal Doors to have 25mm undercut to avoid internal pressure build up

ISSUED FOR TENDER

LEGEND

WELD JOINT

HOMES FOR NGARANNAM,  
MAFA LGA, BORNO.

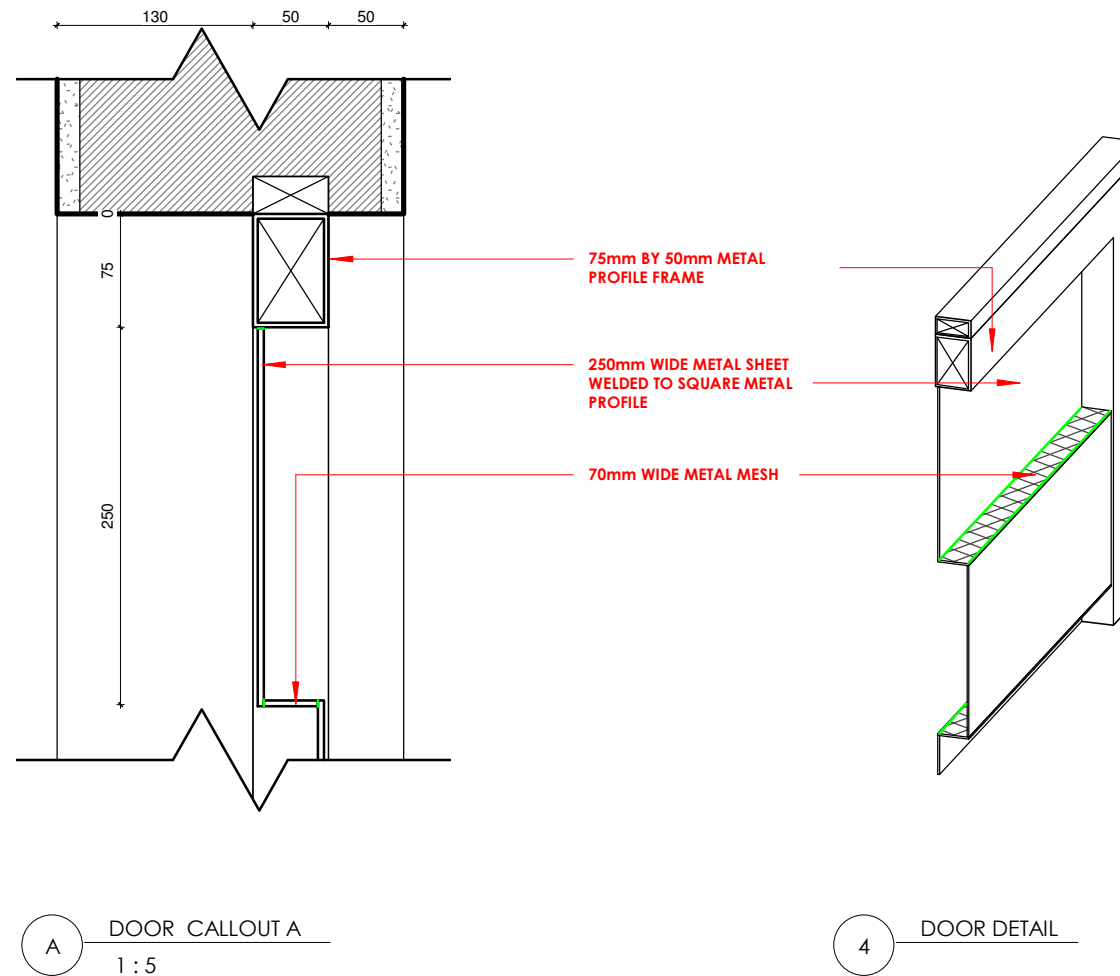
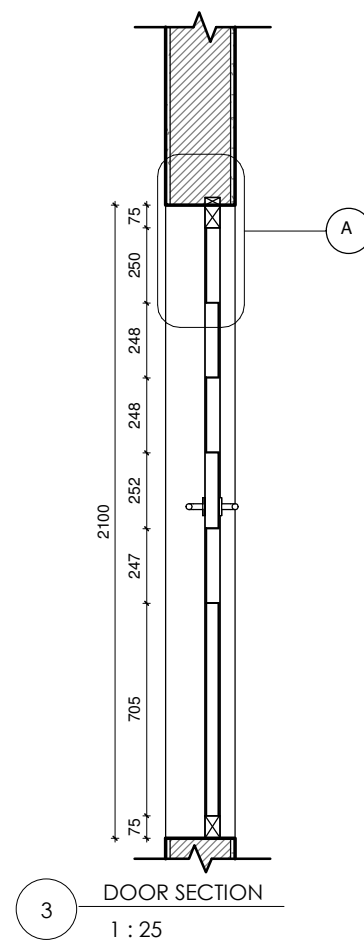
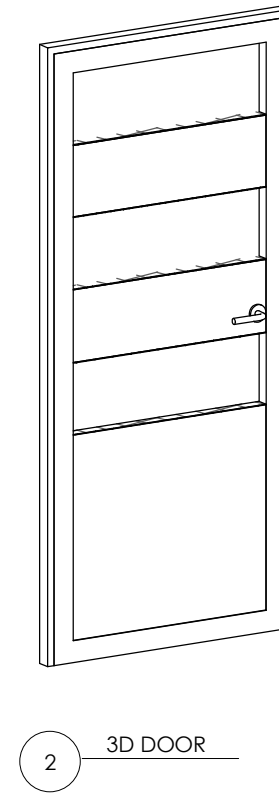
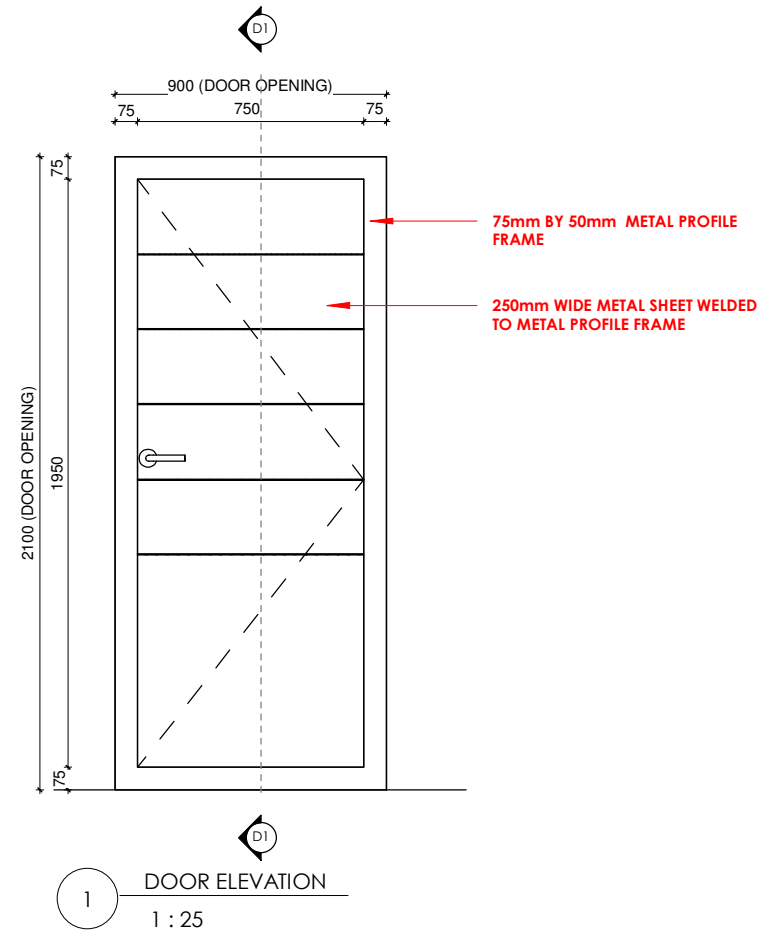
PRIMARY SCHOOL  
W1 WINDOW DETAIL

Scale: As indicated

Date: MARCH, 2021

Drwg. No.  
A435-03-501

Suffix:  
O



## NOTE

Figured dimension must be taken in reference dimensions.

Contractor, sub-contractors and suppliers must verify all dimension on site before commencing any work or making any shop drawing.

All timber to be pressure-treated with anti-fungal and anti-infection on approved treatment.

**The Architect accepts no responsibility for projects not supervised by any of its representatives**

All Internal Doors to have 25mm undercut to avoid internal pressure build up

ISSUED FOR TENDER

LEGEND

WELD JOINT

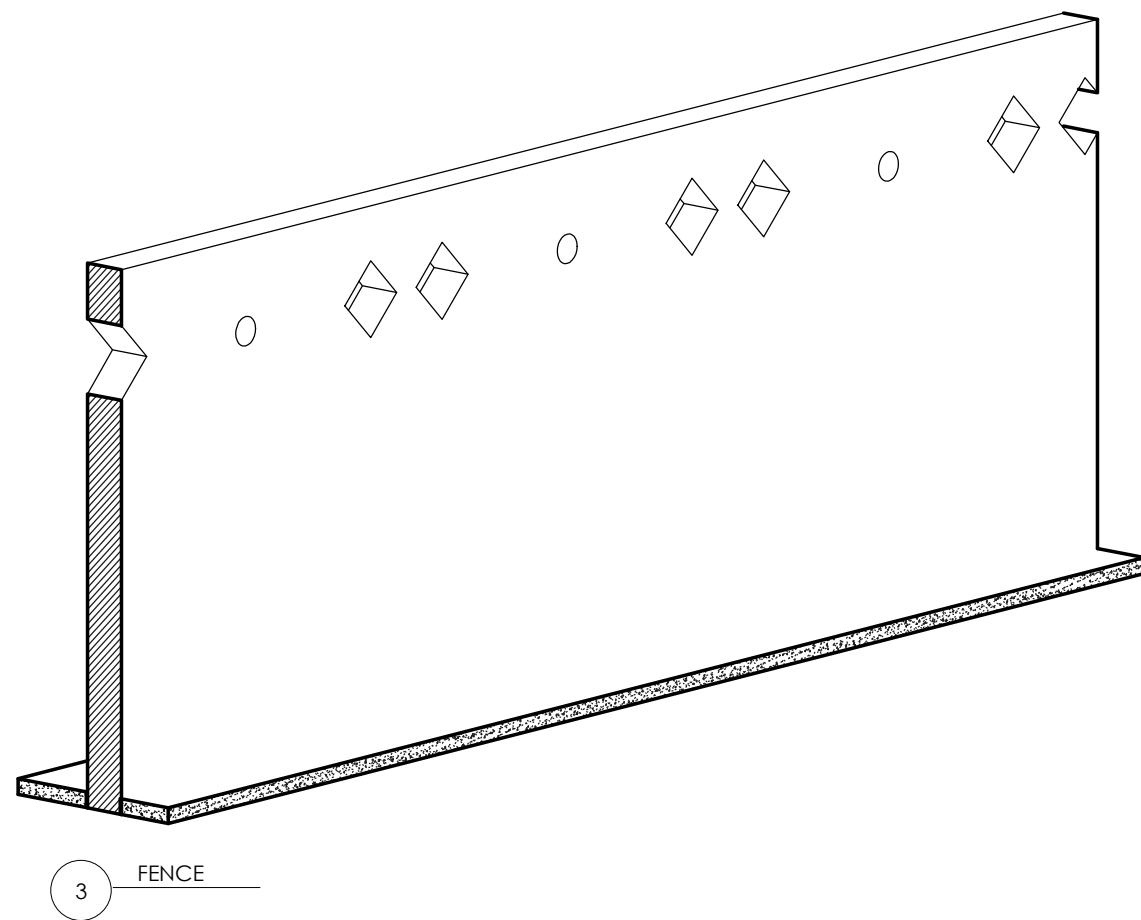
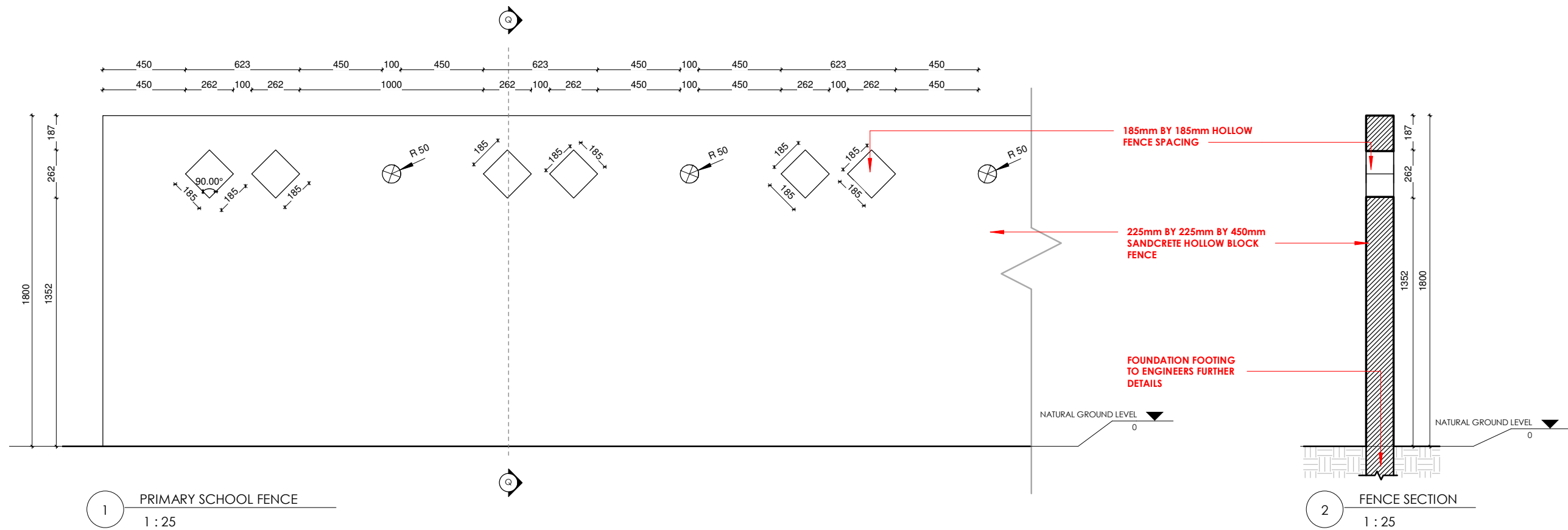
HOMES FOR NGARANNAM,  
MAFA LGA, BORNO.

PRIMARY SCHOOL  
D1 DOOR DETAIL

Scale: As indicated

Date: MARCH, 2021

Drwg. No. A435-03-502  
Suffix: O



## NOTE

Figured dimension must be taken in reference dimensions.

Contractor, sub-contractors and suppliers must verify all dimension on site before commencing any work or making any shop drawing.

All timber to be pressure-treated with anti-fungal and anti-infection on approved treatment.

The Architect accepts no responsibility for projects not supervised by any of its representatives

All Internal Doors to have 25mm undercut to avoid internal pressure build up

ISSUED FOR TENDER

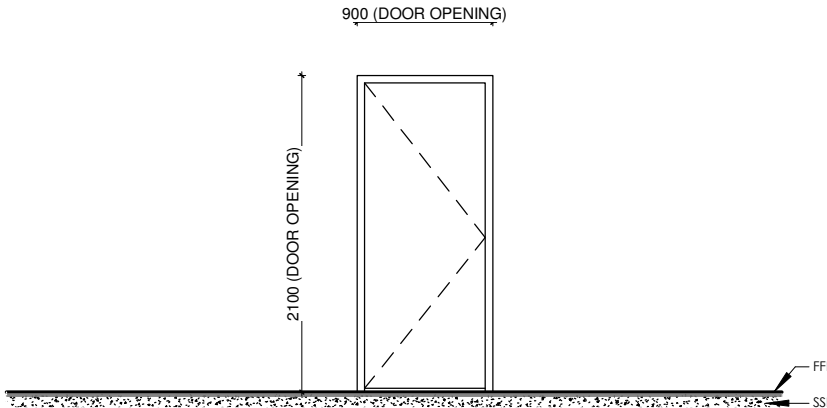
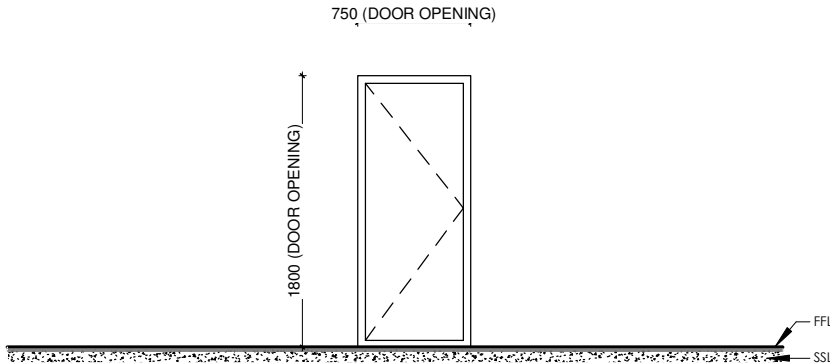
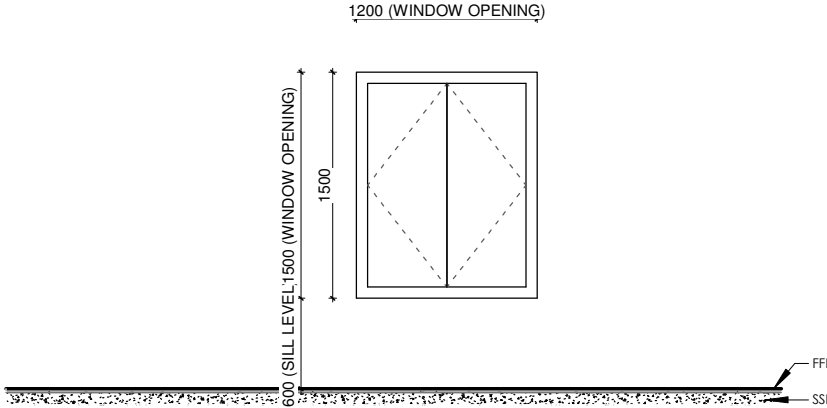
HOMES FOR NGARANNAM,  
MAFA LGA, BORNO.

PRIMARY SCHOOL  
FENCE DETAIL

Scale: 1 : 25

Date: MARCH, 2021

Drwg. No. A435-03-503  
Suffix: O

<div></div>			<div></div>			<div>NOTE</div> <div>Figured dimension must be taken in preference dimensions.</div> <div>Contractor, sub-contractors and suppliers must verify all dimension on site before commencing any work or making any shop drawing.</div> <div>All timber to be pressure-treated with anti-fungal and anti-infestation on approved treatment.</div> <div>The Architect accepts no responsibility for projects not supervised by any of its representatives</div> <div>All Internal Doors to have 25mm undercut to avoid internal pressure build up</div>
ITEM NO.	D1		D2		<div>ISSUED FOR TENDER</div> <div>SPECIFICATION</div> <div>FLOOR FINISH - FF</div> <div>FF 1.1 50mm SCREED TO CONCRETE SLAB INSTALLED TO A SHINE.</div> <div>WALL FINISH - WF</div> <div>WF 3.1 12mm CEMENT SCREED FINISH WITH TWO COATS OF SHEEN FINISH PAINT. COLOUR TO ARCHITECT'S FUTHER SPECIFICATION.</div> <div>3.2 12mm CEMENT SCREED FINISH WITH AVERAGE GUAGE TYROLEAN FINISH WITH TWO COATS OF WEATHER PROOF PAINT TO ARCHITECT'S FURTHER SPECIFICATION.</div> <div>3.3 12mm CEMENT SCREED FINISH WITH WEATHER PROOF PAINT TO ARCHITECT'S FURTHER SPECIFICATIONS AND ARTIST MURAL.</div> <div>CEILING FINISH - CF</div> <div>CF 4.1 WILLOW REED BAMBOO TO BE INSTALLED TO TIMBER NOGGINS.</div> <div>ROOF FINISH - RF</div> <div>RF 5.1 0.5mm LONG SPAN ALUMINUM SHEETS. COLOUR TO ARCHITECT'S FURTHER SPECIFICATION.</div> <div>FASCIA BOARD - FB</div> <div>FB 6.1 300x 25mm HARDWOOD PLANK FINISHED WITH GLOSS PAINT. COLOUR TO ARCHITECT'S FURTHER SPECIFICATION</div>	
QUANTITY	04		03			
LOCATION	D1 / 001, 002, 003, 004 (CLASSROOMS 1 & 2), OFFICE & STORE		D2 / 001, 002, 003, (TOILET STALL 1, 2 & 3)			
DESCRIPTION	900mm BY 2100mm SINGLE LEAF INWARD SWING METAL DOOR HAVING 75mm BY 50mm METAL PROFILE FRAME, WITH 2mm BY 250mm WIDE METAL SHEETS AT 5 INTERVALS AND 700mm HIGH BASE SHEETS SEPERATED BY 70mm WIDE METAL MESH, ALL WELDED TO DOOR FRAME.		750mm BY 1800mm SINGLE LEAF INWARD SWING METAL DOOR HAVING 75mm BY 50mm METAL PROFILE FRAME, WITH 250mm WIDE METAL SHEETS AT 5 INTERVALS AND 700mm HIGH BASE SHEETS SEPERATED BY 70mm WIDE METAL MESH, ALL WELDED TO DOOR FRAME.			
<div></div>						
ITEM NO.	W1				<div>PRIMARY SCHOOL: DOOR AND WINDOW SCHEDULE</div> <div>Scale: 1 : 50</div> <div>Date: MARCH, 2021</div> <div>Drwg. No. A435-03-601</div> <div>Suffix: O</div>	
QUANTITY	12					
LOCATION	W1 / 001, 002, 003, 004, 005, 006, 007, 008, 009, 010, 011, 012 (CLASSROOMS 1 & 2), OFFICE & STORE					
DESCRIPTION	1200mm BY 1500mm DOUBLE LEAF OUTWARD SWING METAL WINDOW HAVING 50mm BY 50mm SQUARE METAL PROFILE FRAME, WITH 2mm BY 300mm WIDE METAL SHEETS AT 5 INTERVALS SEPARATED BY 45mm METAL MESH, ALL WELDED TO WINDOW FRAME.					