



Iraqi Ministry  
of Interior

Police Station

[illegible]

Two storey  
building

## Ground Floor

Project number 2020.02

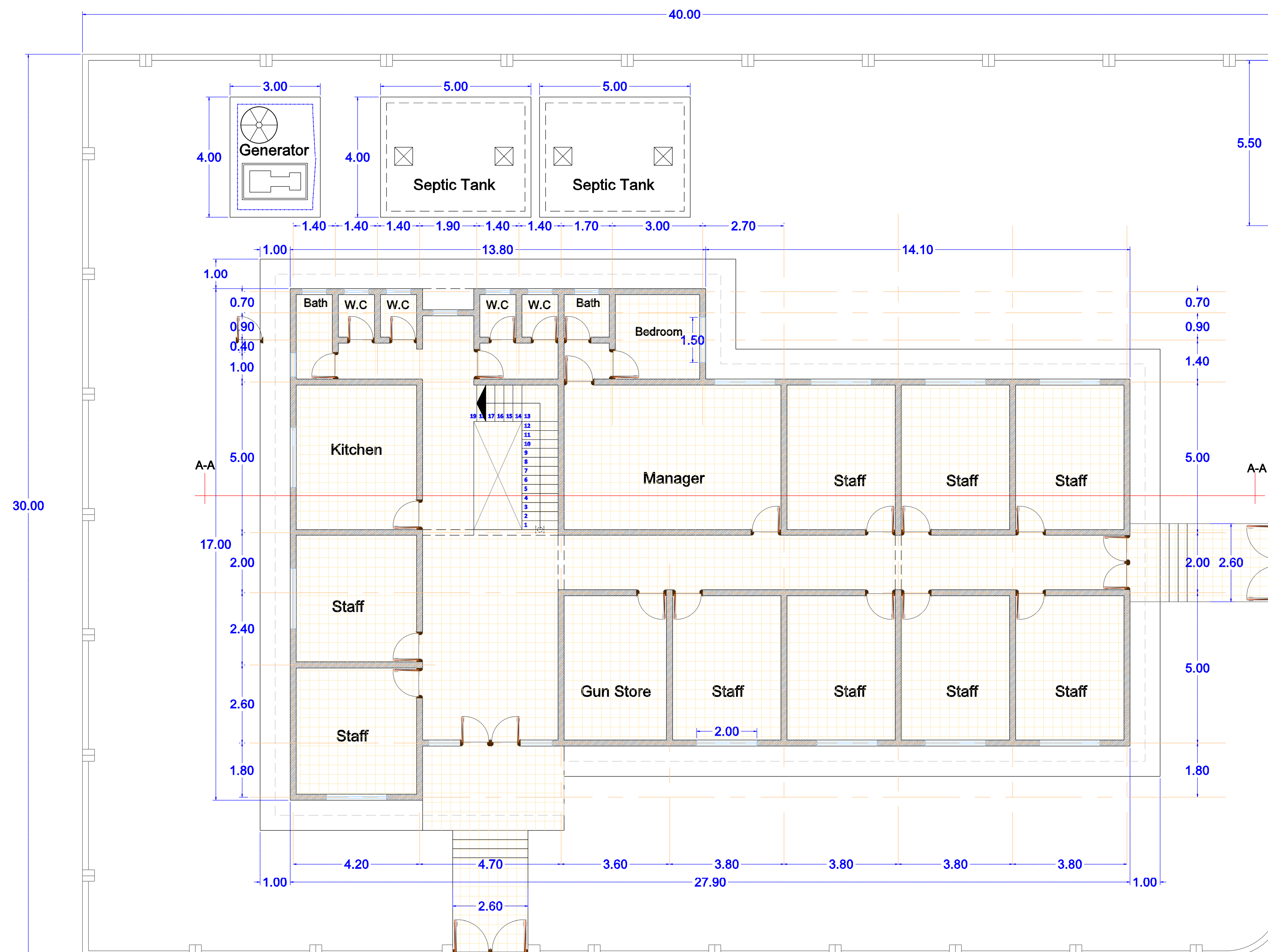
Date 30 / Mach / 2020

Drawn by **Consultant Engineers**

Checked by	<b>Civil Engineer Team Lead Reviewer</b>
------------	--

Arch-01

Scale 1 : 100





Iraqi Ministry  
of Interior

Police Station  
One Floor

[illegible]

Two storey  
building

## First Floor

Project number	2020.02
----------------	---------

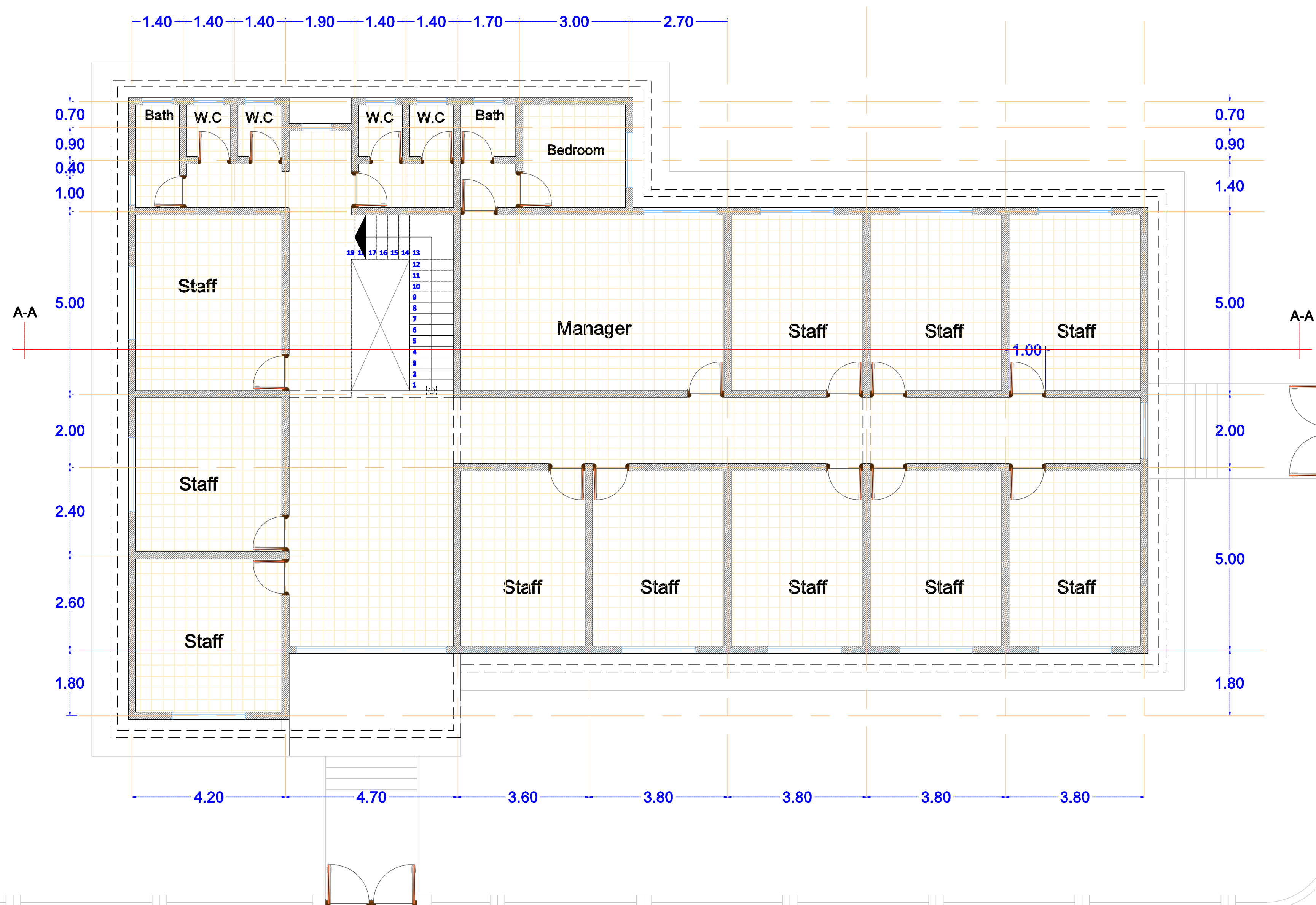
Date 30 / Mach / 2020

Drawn by **Consultant Engineers**

Checked by	<b>Civil Engineer Team Lead Reviewer</b>
------------	--

## Arch-02

Scale 1 : 100

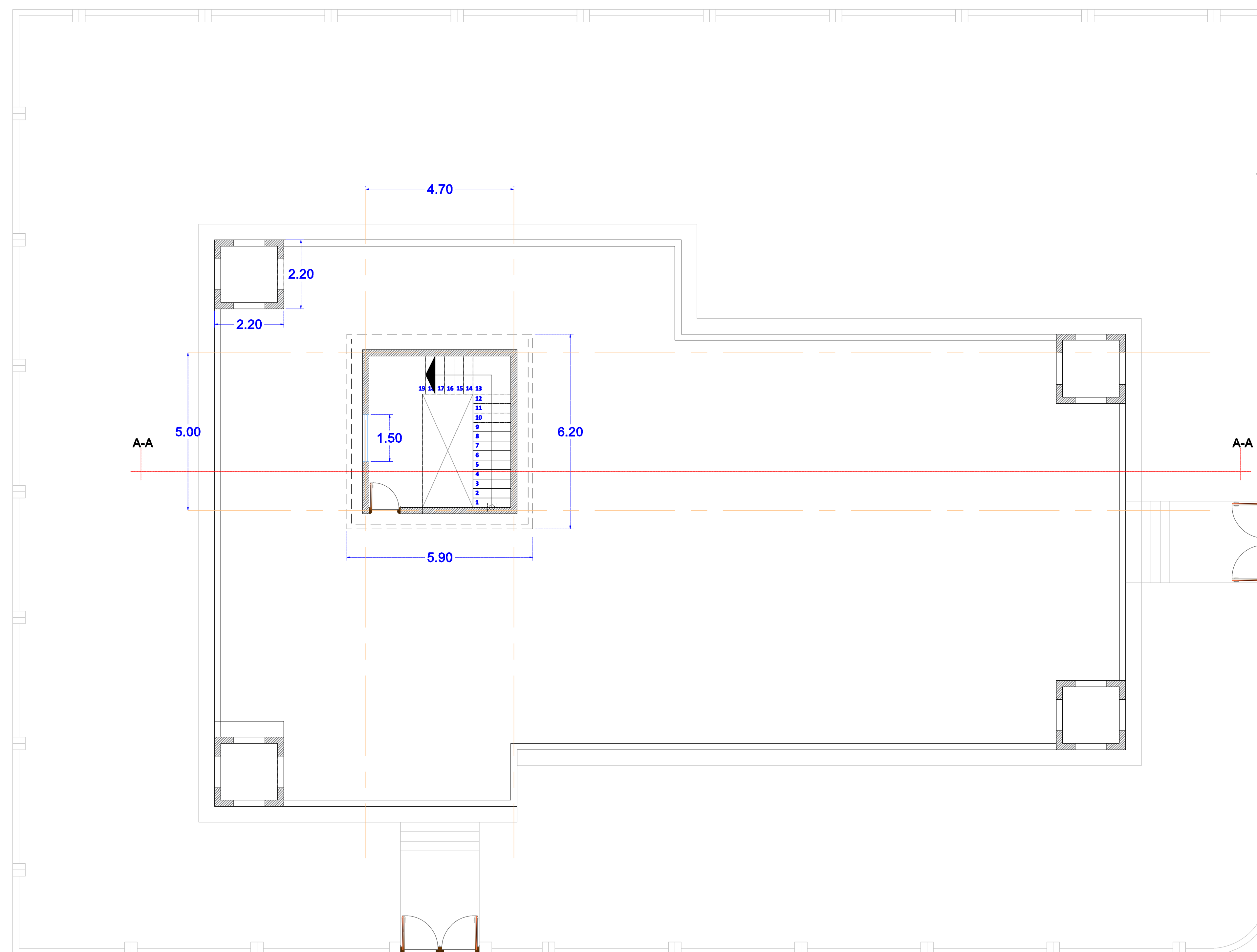






Iraqi Ministry  
of Interior

Police Station  
One Floor

[illegible]

Two storey building

## Pent house & watch towers

Project number 2020.02

Date 30 / Mach / 2020

Drawn by **Consultant Engineers**

Checked by	<b>Civil Engineer Team Lead Reviewer</b>
------------	--

## Arch-03

Scale 1 : 100



## Police Station One Floor

[illegible]

Two storey  
building

Section (A-A)

Project number 2020.02

Date 30 / Mach / 2020

Drawn by **Consultant Engineers**

Checked by **Civil Engineer  
Team Lead Reviewer**

Arch-04

Scale 1 : 100





Iraqi Ministry  
of Interior

Police Station  
One Floor

[illegible]

Two storey  
building

## Excavation

Project number 2020.02

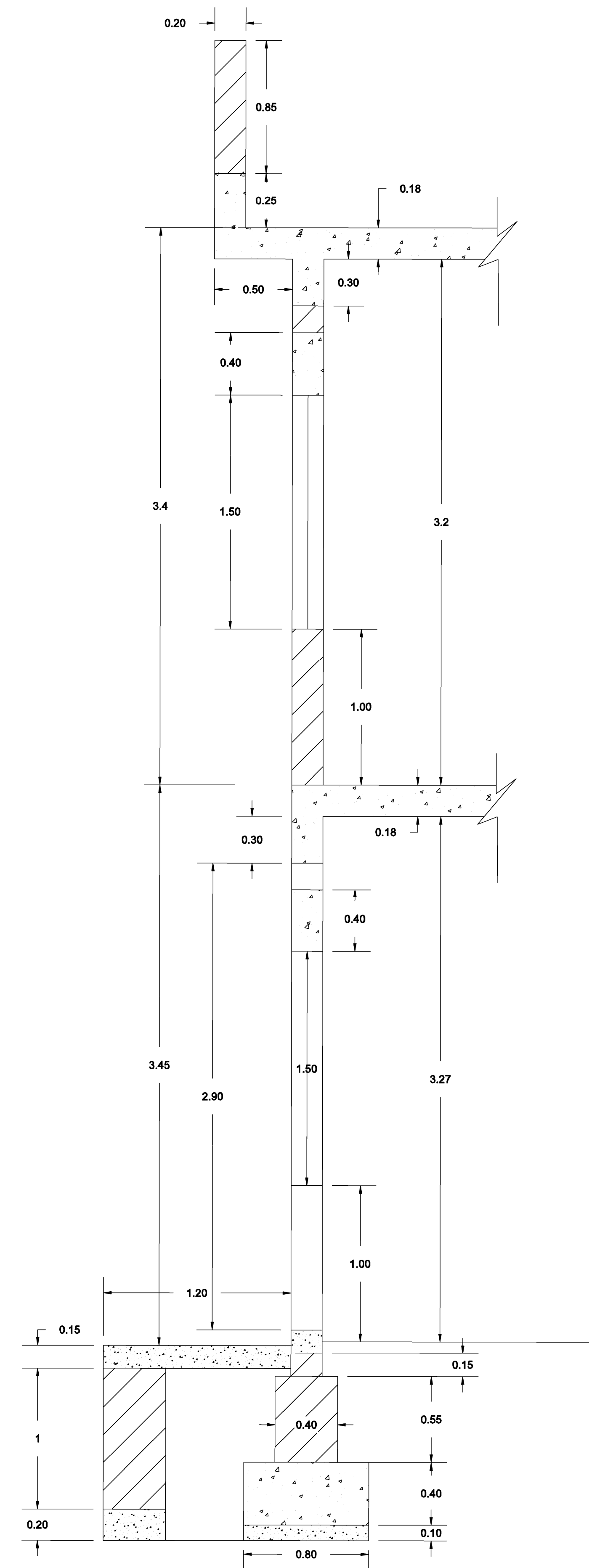
Date 30 / Mach / 2020

Drawn by **Consultant Engineers**

Checked by **Civil Engineer**  
**Team Lead Reviewer**

# Civil-01

Scale 1 : 100



Iraqi Ministry  
of Interior

Police Station

[illegible]

Two storey  
building

## Section

Project number	2020.02
----------------	---------

Date 30 / Mach / 2020

Drawn by **Consultant Engineers**

Checked by **Civil Engineer**  
**Team Lead Reviewer**

Civil-03

Scale 1 : 100





Iraqi Ministry  
of Interior

Police Station

[illegible]

Two storey  
building

## Doors & windows

Project number 2020.02

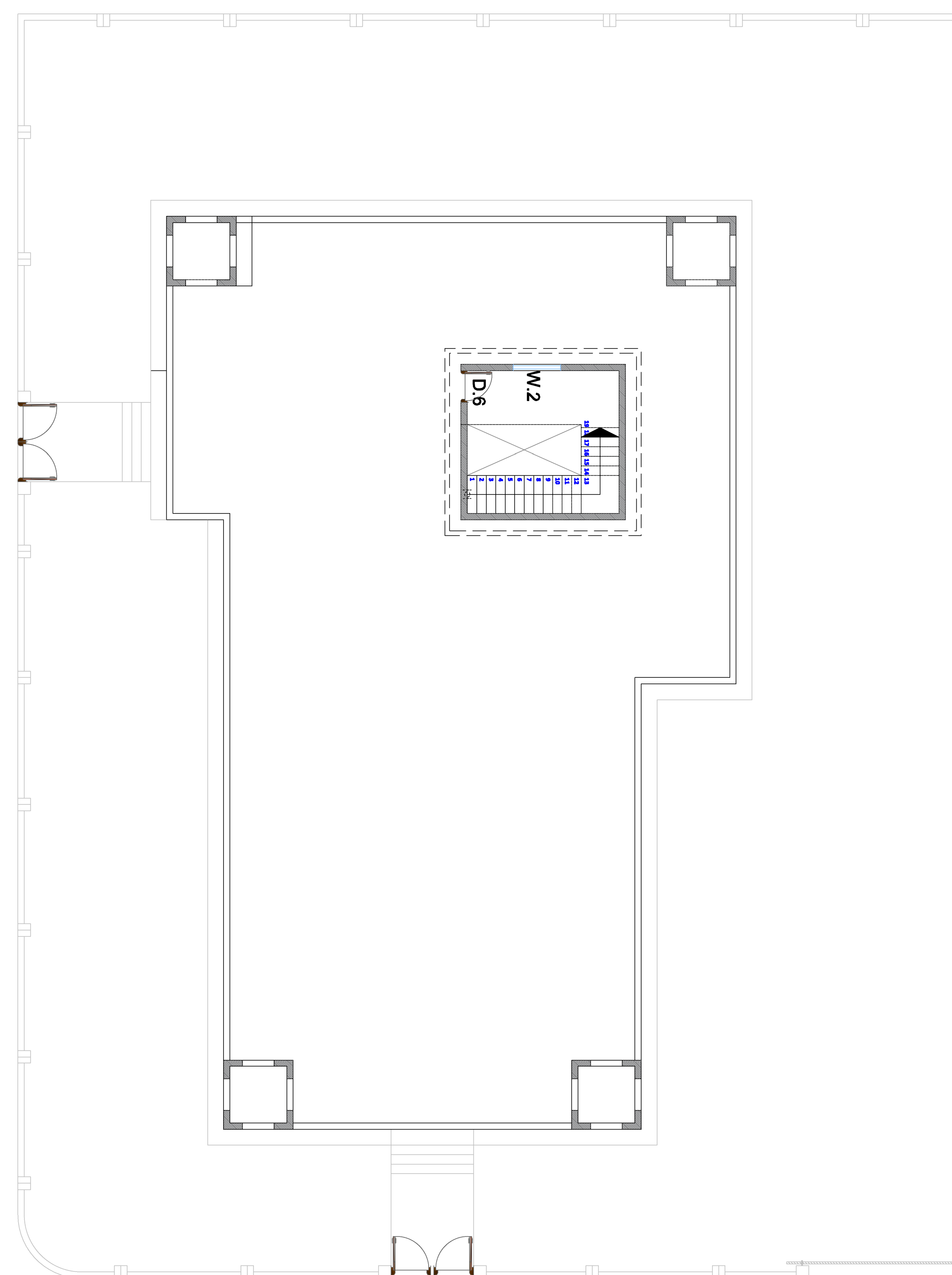
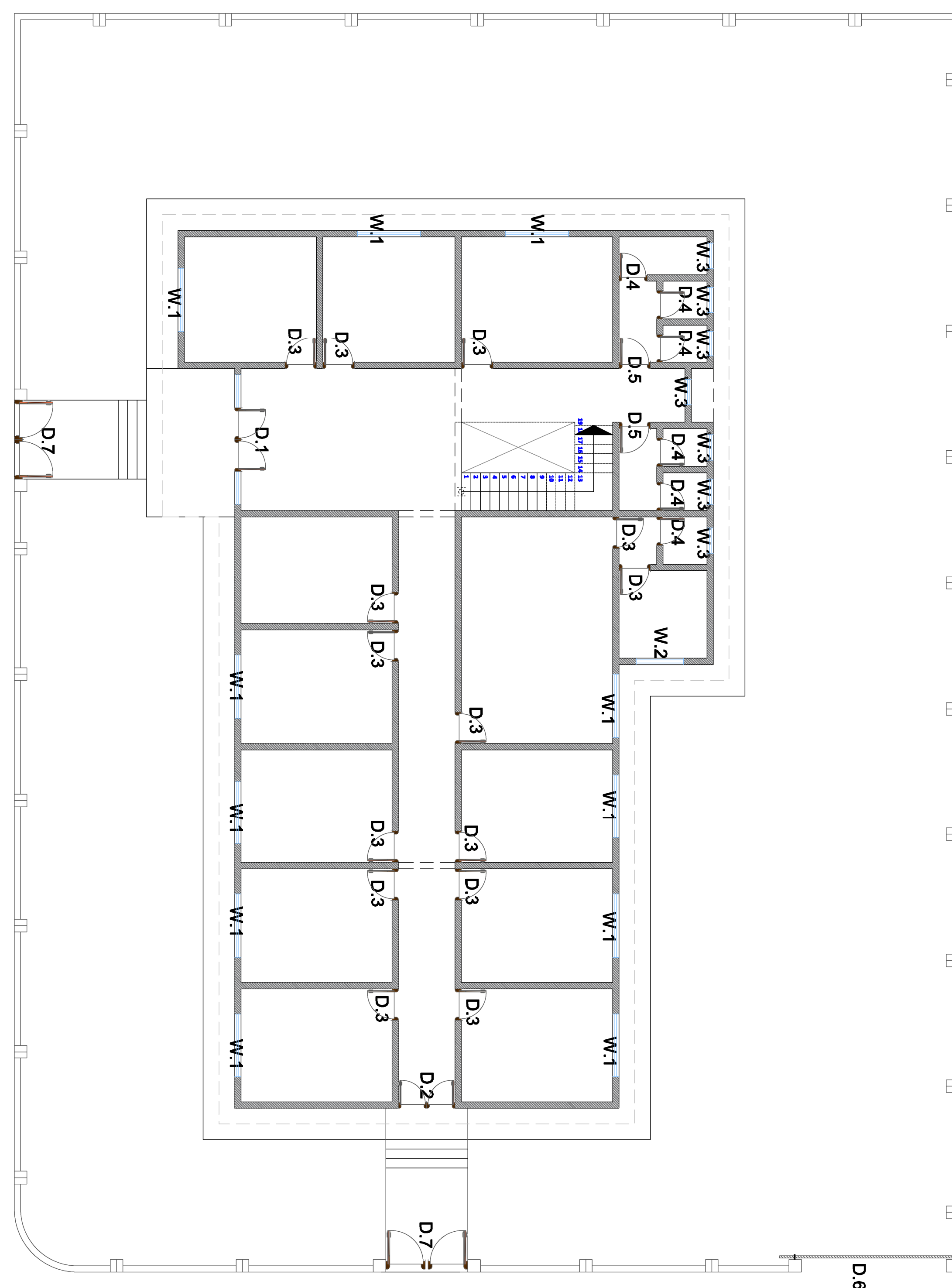
Date 30 / Mach / 2020

Drawn by **Consultant Engineers**

Checked by **Civil Engineer  
Team Lead Reviewer**

Civil-04

Scale 1 : 100





Structural drawing of a staircase showing reinforcement details. The drawing includes a plan view of the staircase steps and a detailed cross-section of a landing.

**Reinforcement Details:**

- Ø12@150 c/c
- Ø16@150 c/c
- Ø10@250 c/c
- 1Ø10
- 6Ø16
- Ø10@250mm

**Dimensions (meters):**

- 0.15
- 0.30
- 0.175
- 0.015
- 0.60
- 0.40
- 0.10

**Other Labels:**

- L/3
- V

[illegible]

Two storey  
building

### Detail of Stair

Project number	2020.02
----------------	---------

Date 30 / Mach / 2020

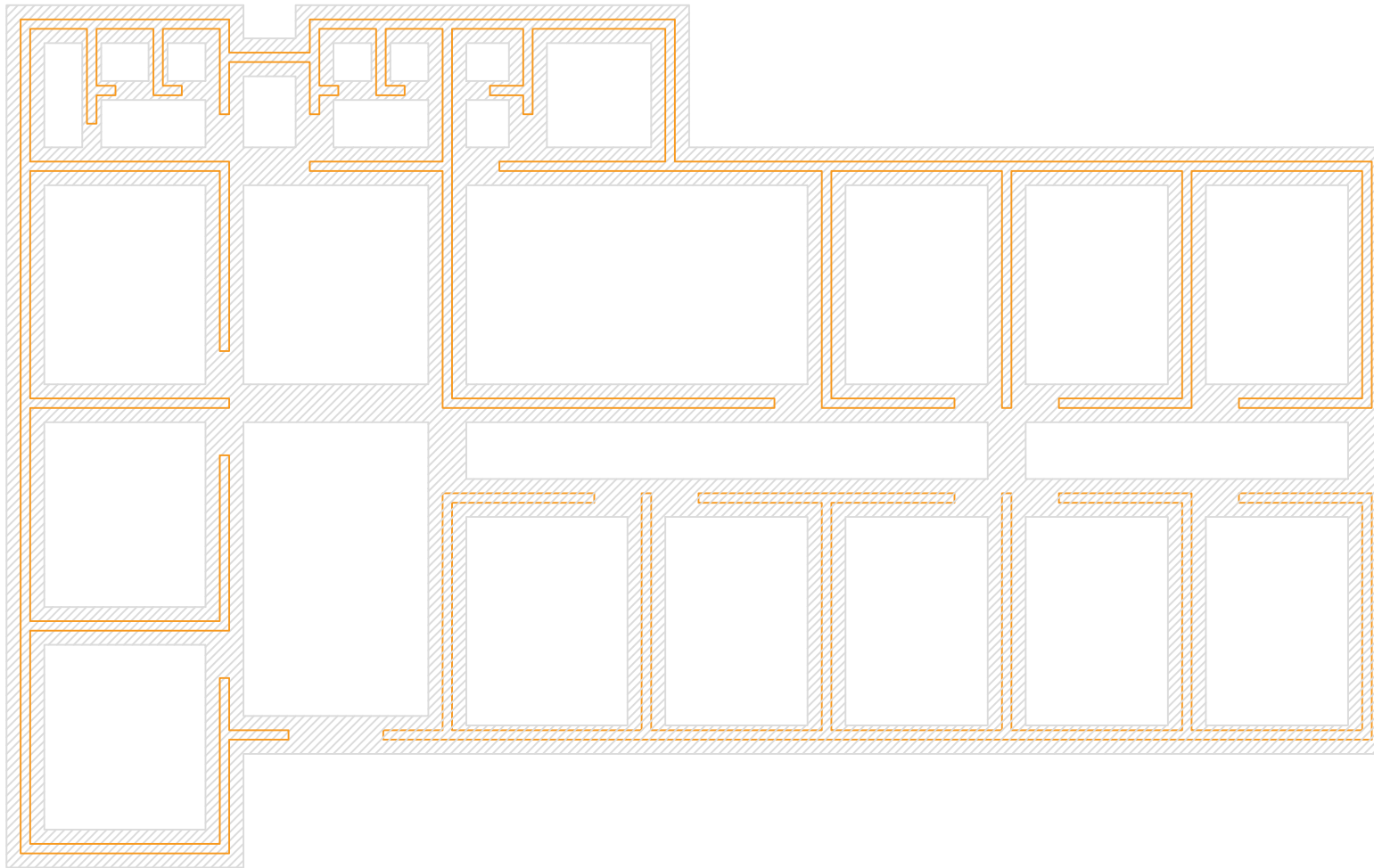
Drawn by **Consultant Engineers**

Checked by **Civil Engineer  
Team Lead Reviewer**

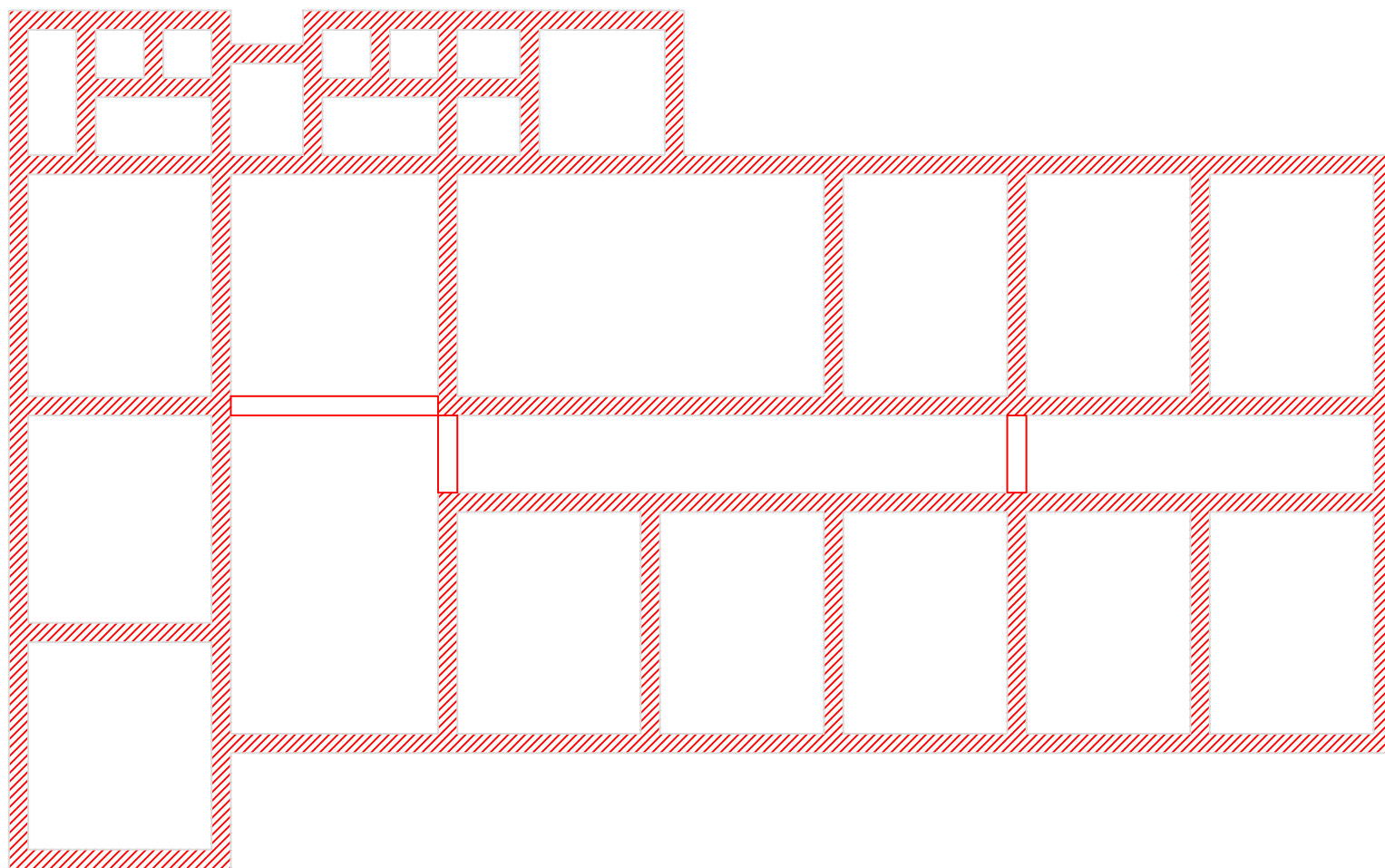
Civil-07

Scale 1 : 100



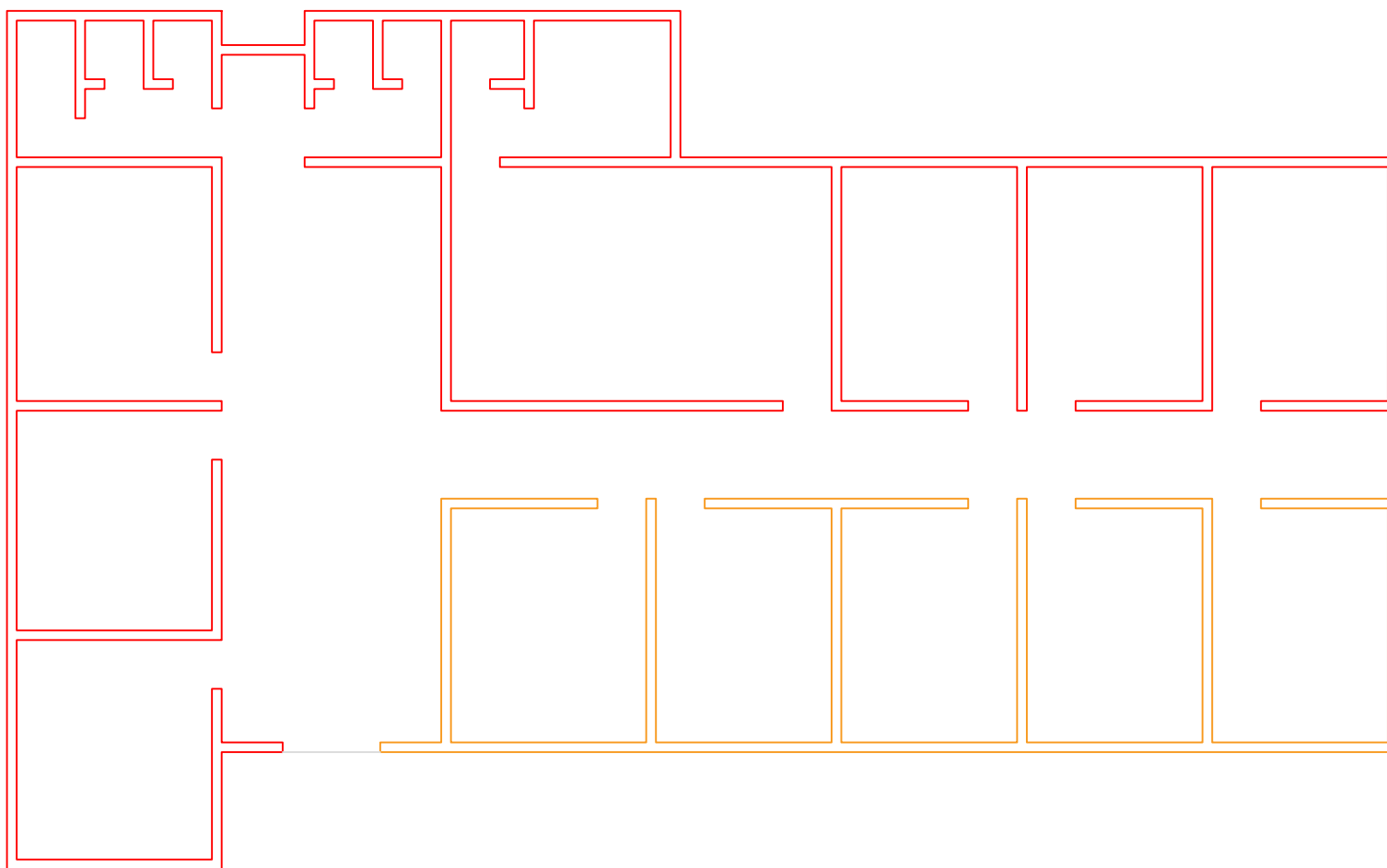


**Reinforced Concrete Wall Footing (W80 x D40) cm**

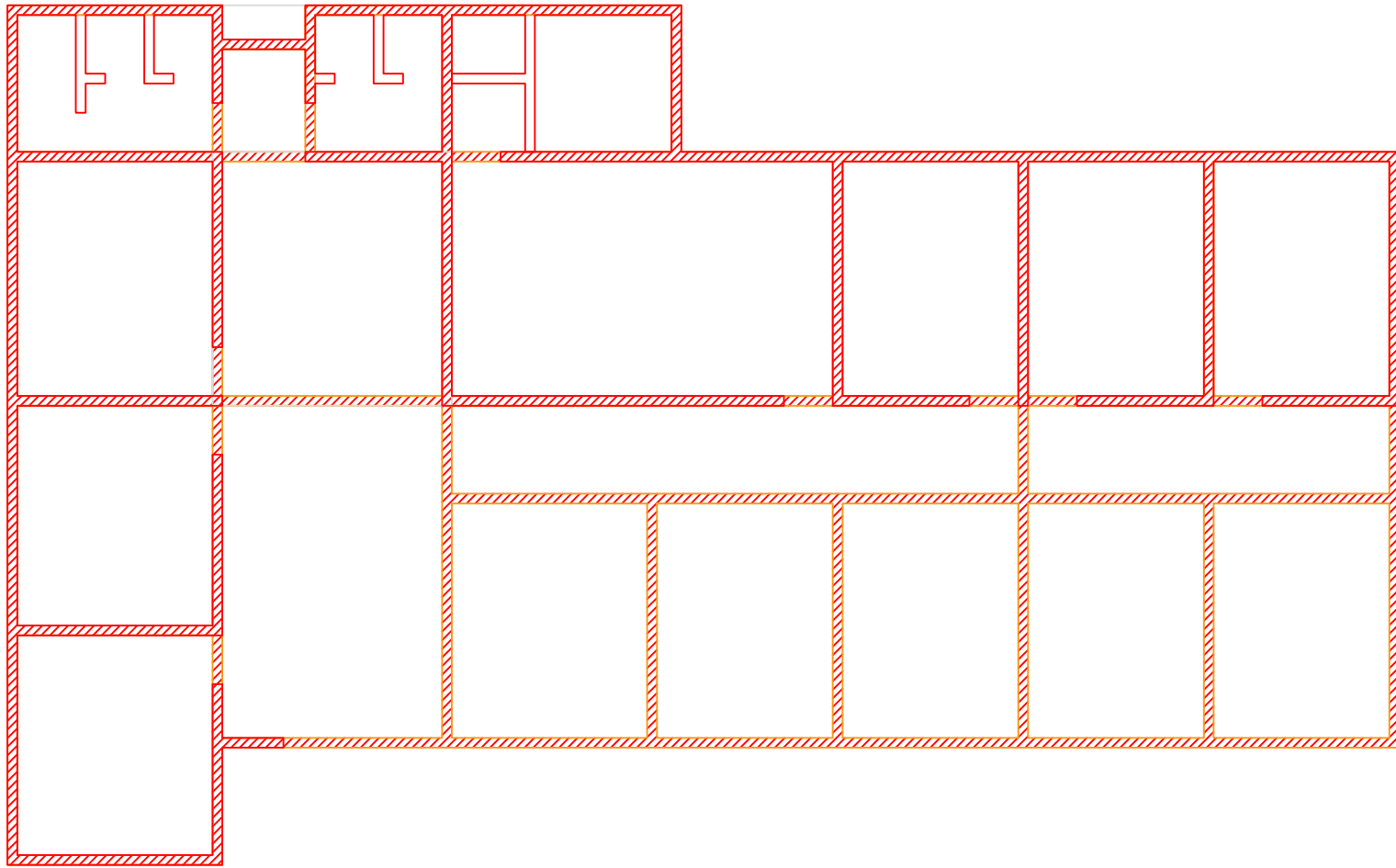


**Wall 40 cm**

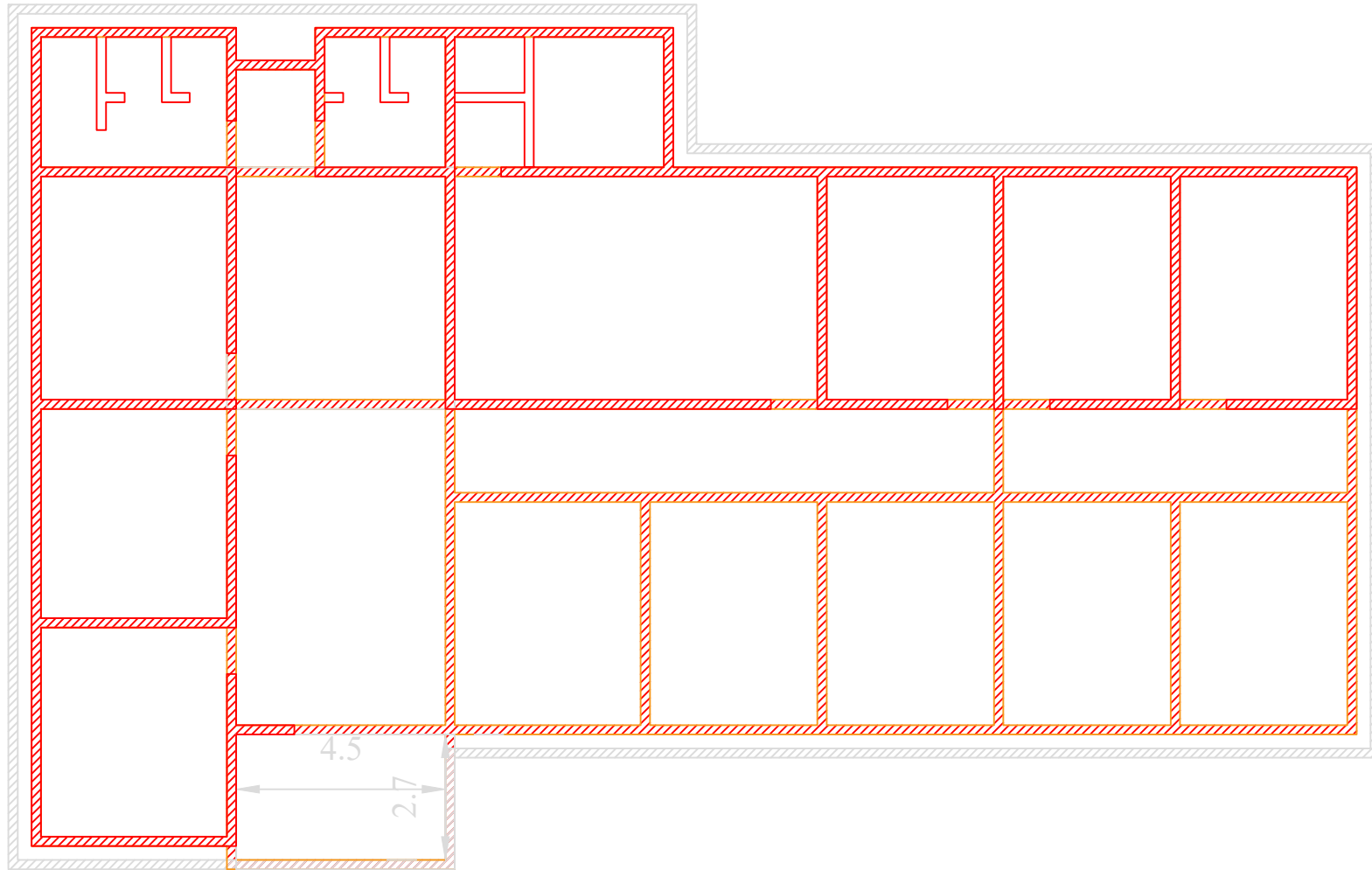




**Wall 20 cm**



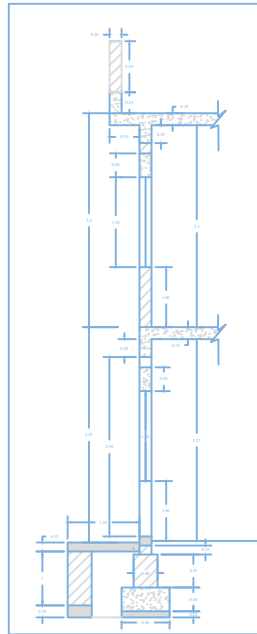
**Reinforced Concrete BeamG**



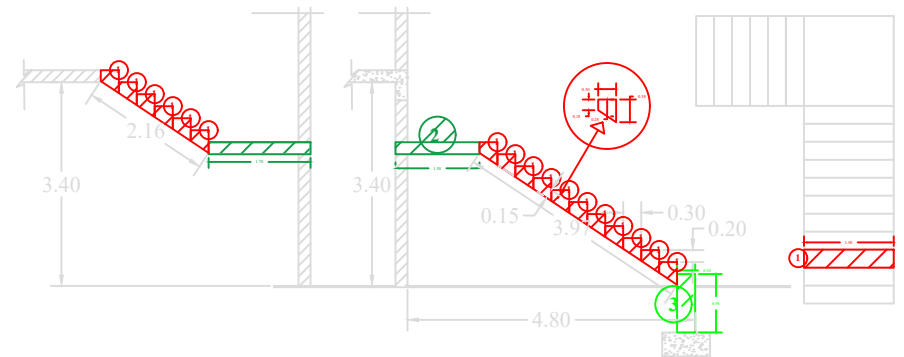
**Reinforced Concrete BeamF**



# Ground Floor & First Floor

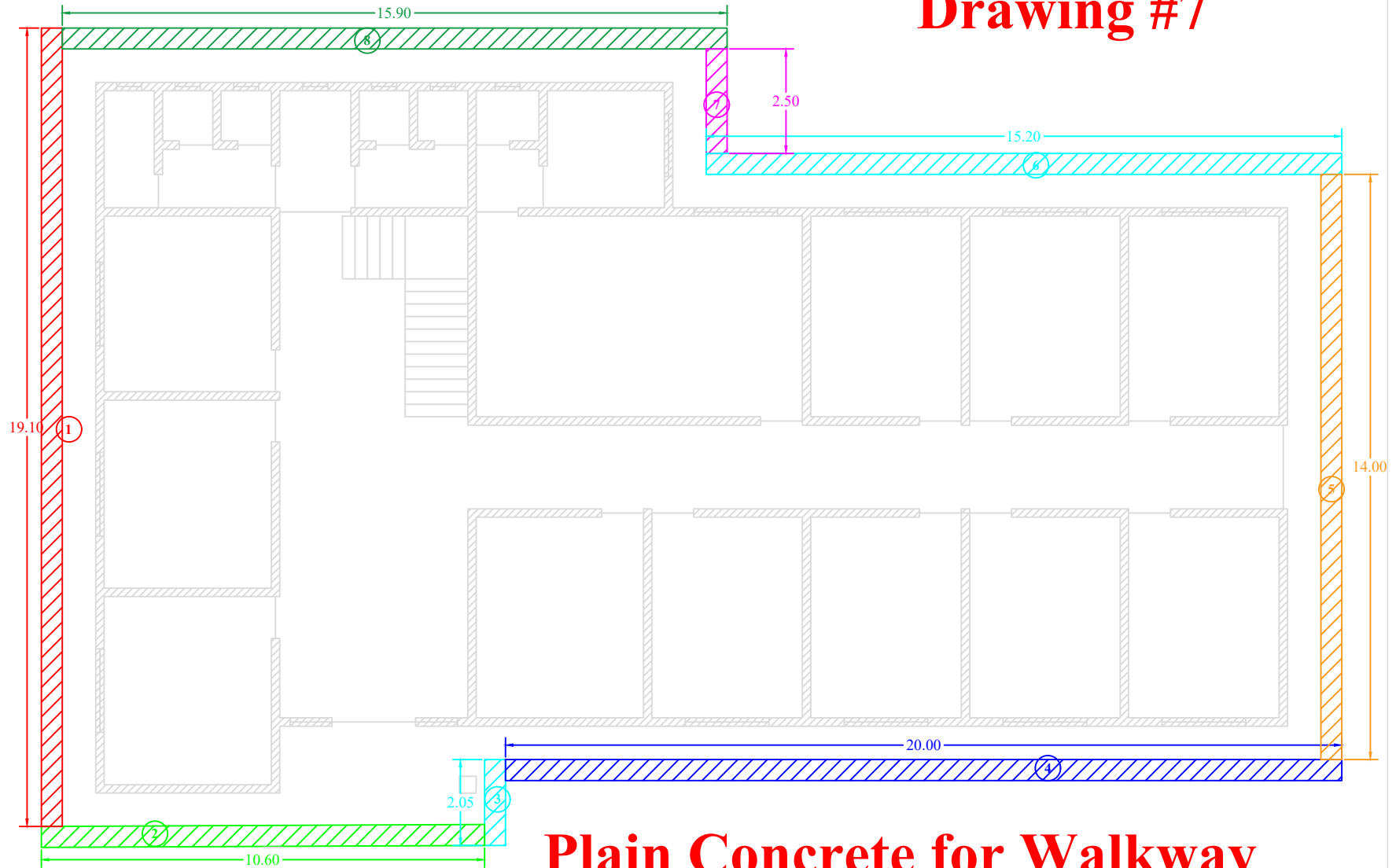


**Section**



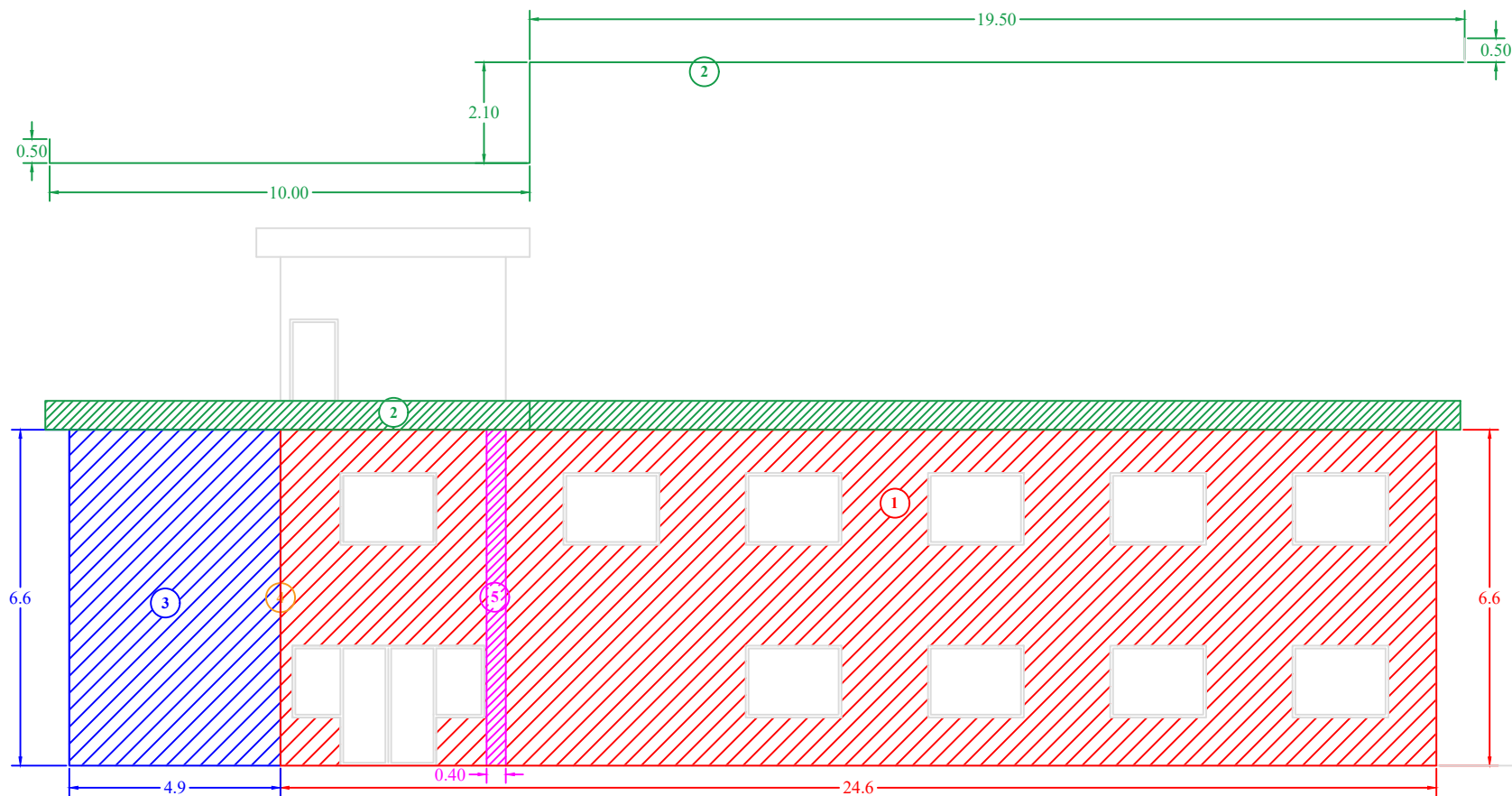
**Stairs**

## Drawing #7

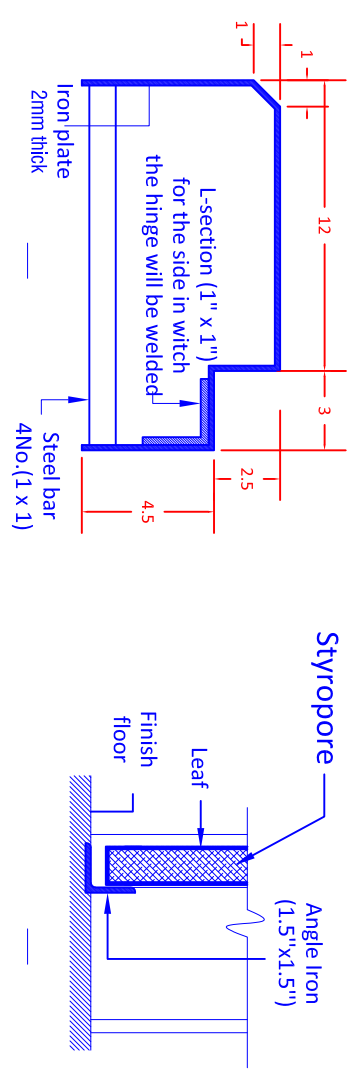
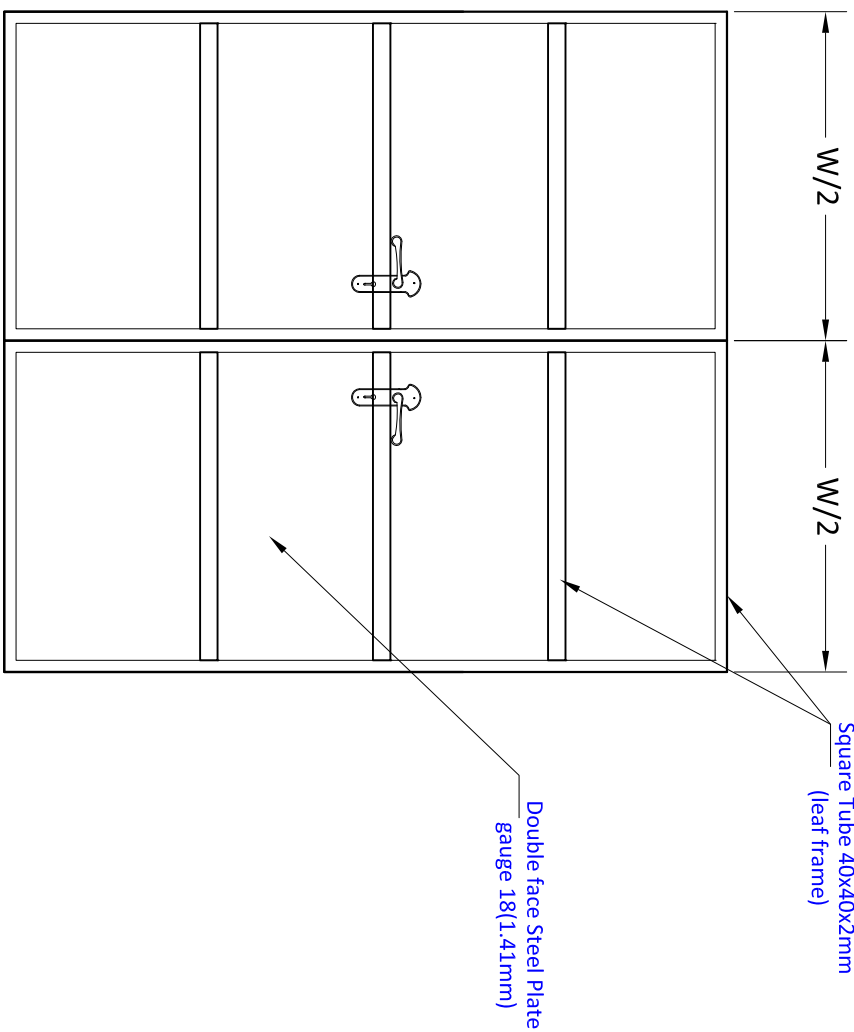
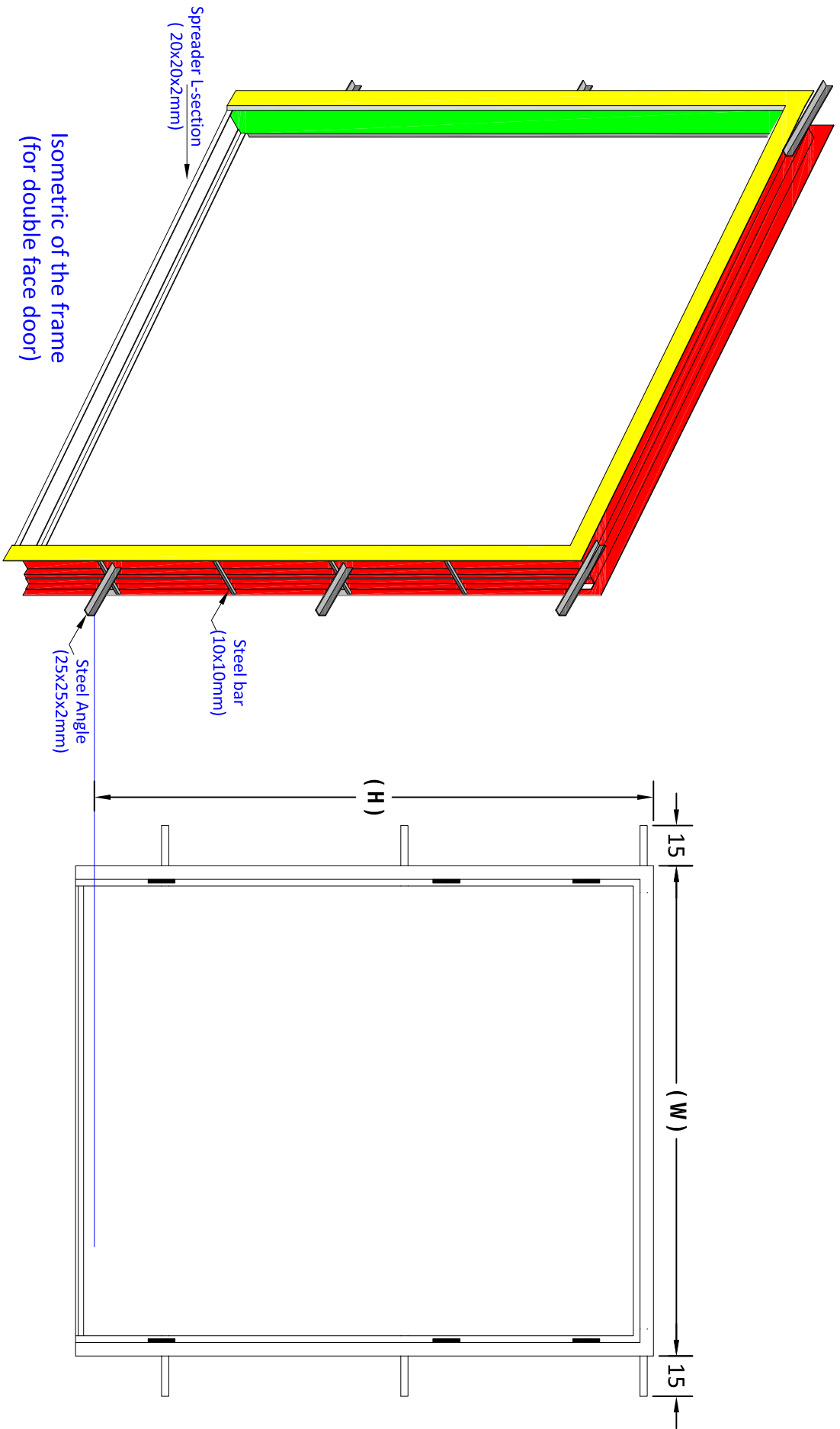


**Plain Concrete for Walkway**

# Drawing #25

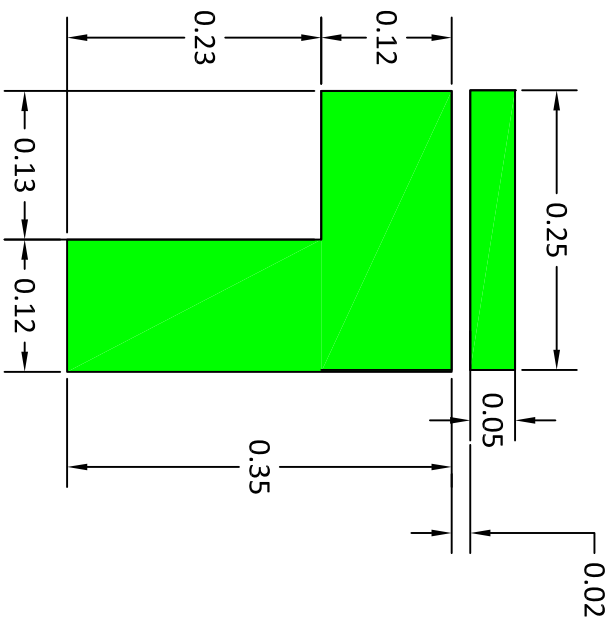
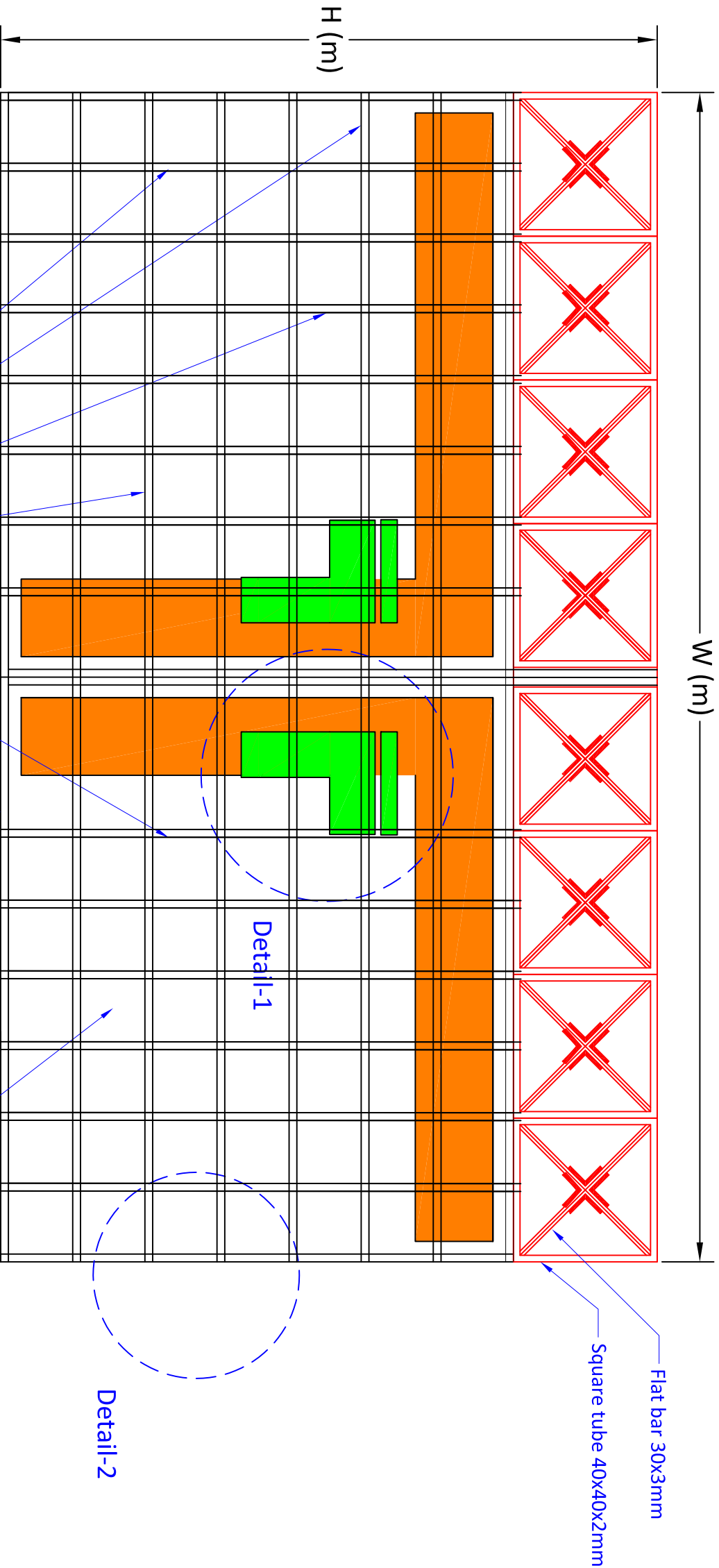




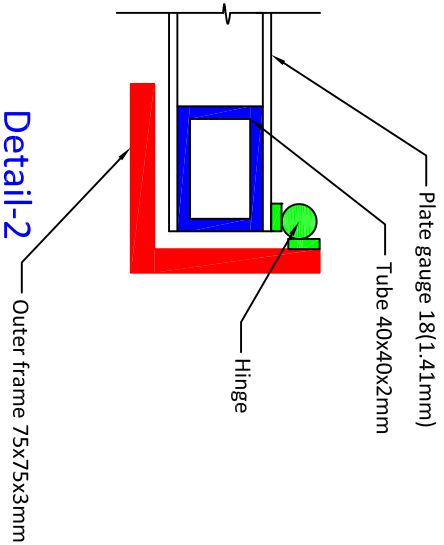


Detail of Steel Door

Typical Drawings for Renovation		
Drawn by: Soran Rostam Aziz		
Sheet Title: Detail of Double Leaves Steel Door		
Scale: NTS	Date:	DWG No.



Detail-1



Detail-2

## Detail of the Main Gate

### Typical Drawings for Renovation

Drawn by: Soran Rostam Aziz

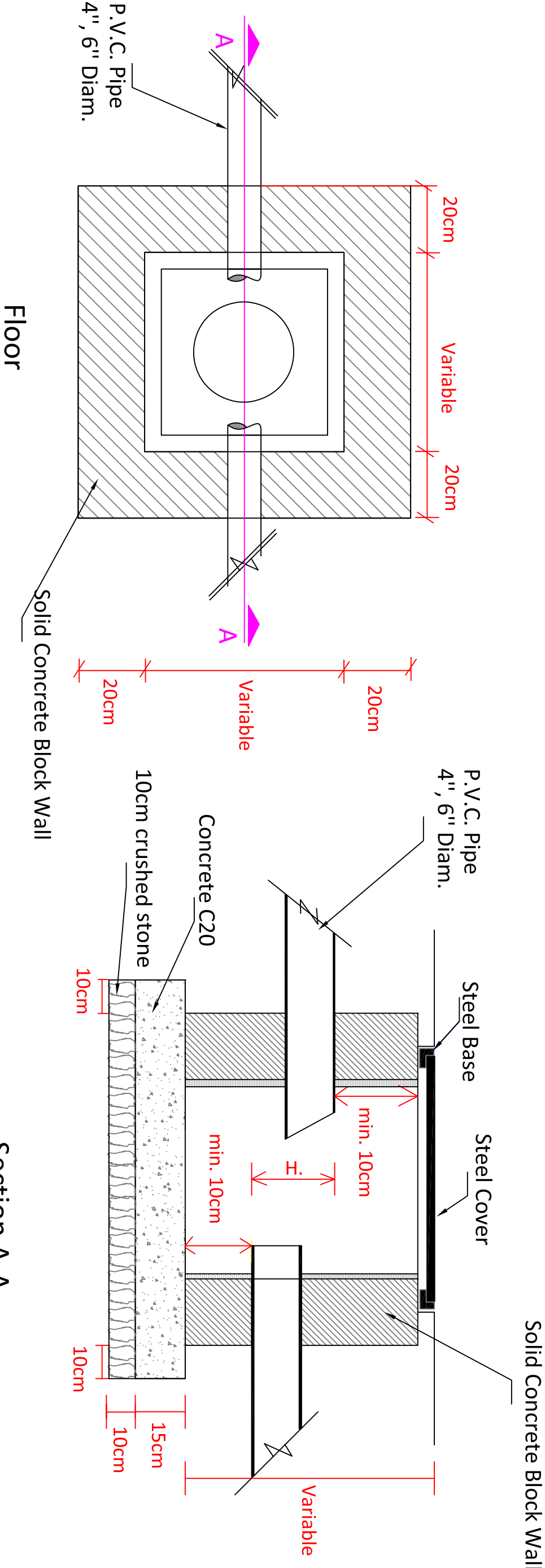
Sheet Title:

Detail of Main Gate

Scale: NTS

Date:

DWG No.



Typical Detail of Manhole  
40x40, 60x60, 80x80

Section A-A  
Typical Manhole

Typical Drawings for Renovation

Drawn by: Soran Rostam Aziz

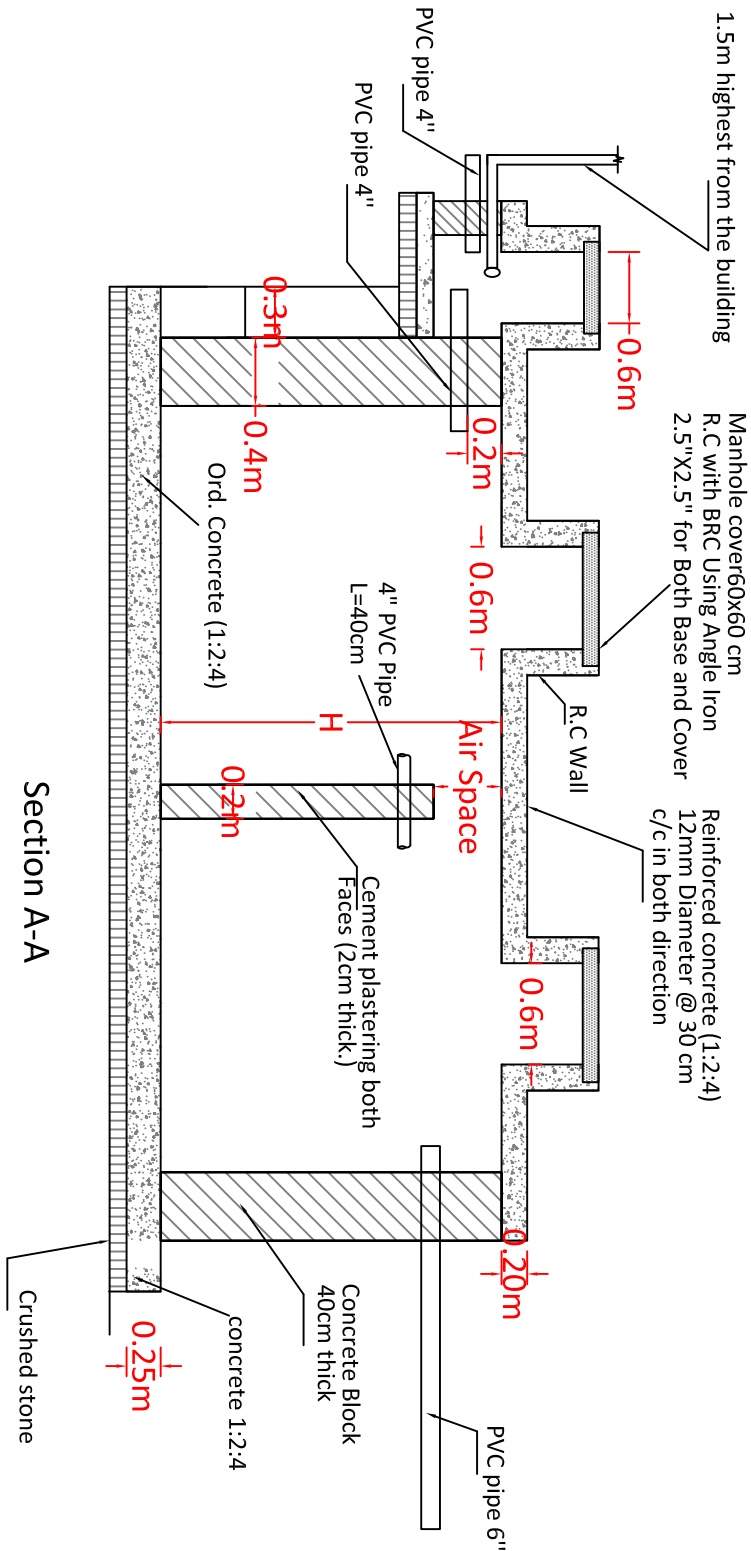
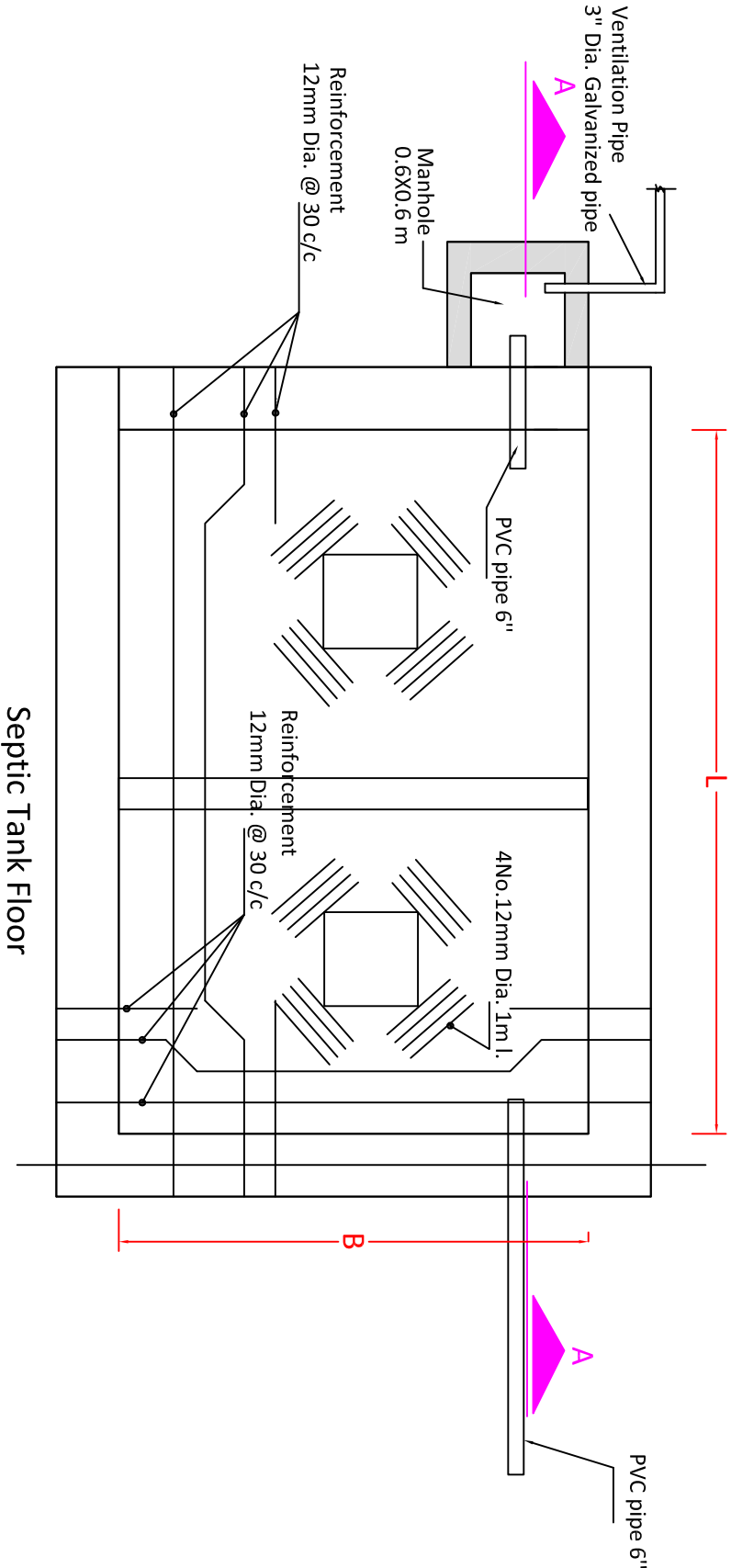
Sheet Title:

Typical Detail of Manhole

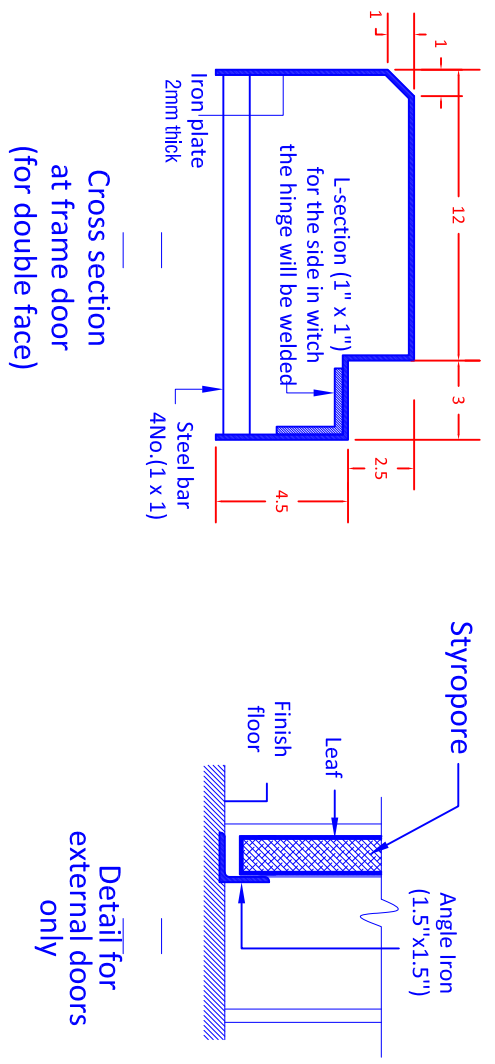
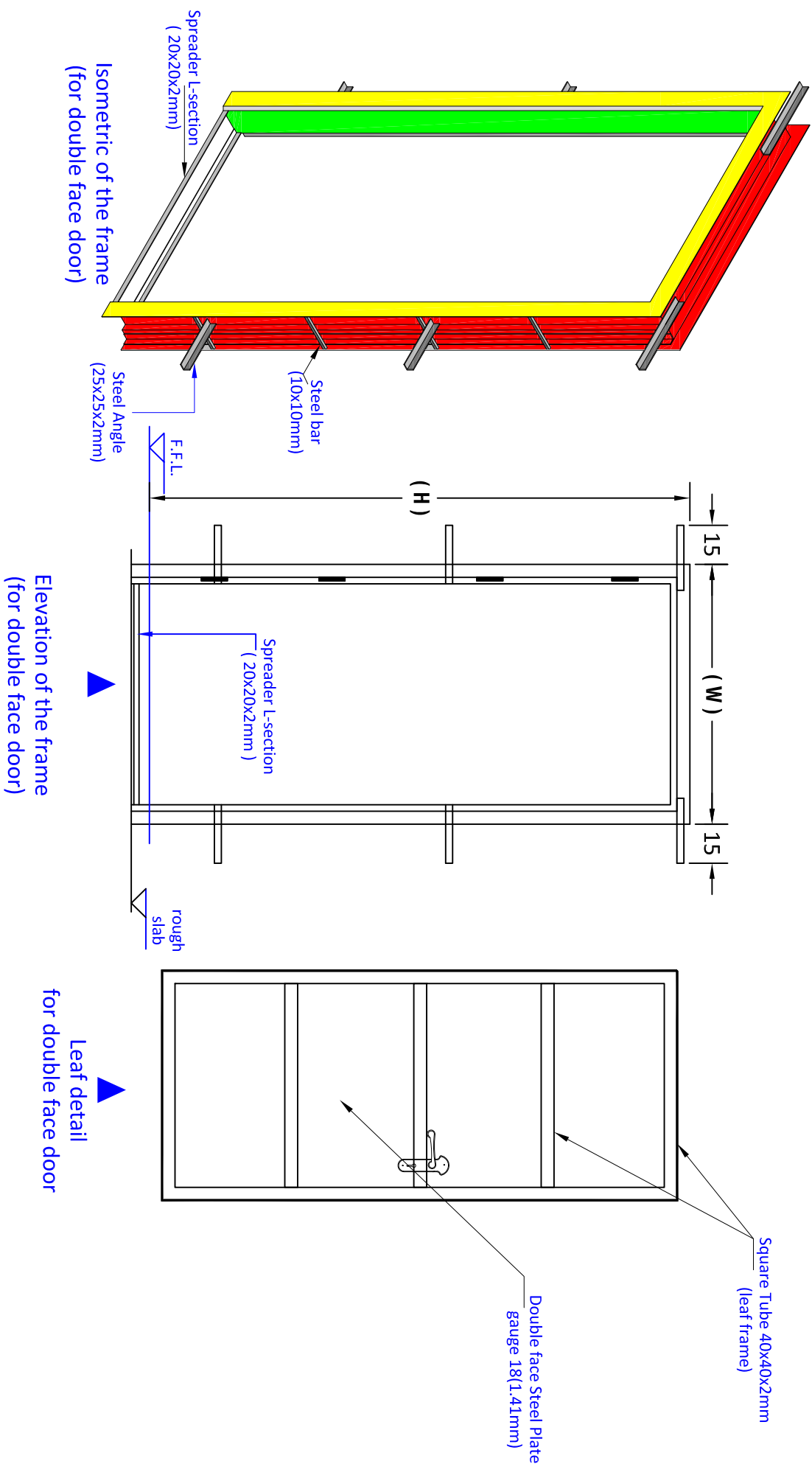
Scale: NTS

Date:

DWG No.

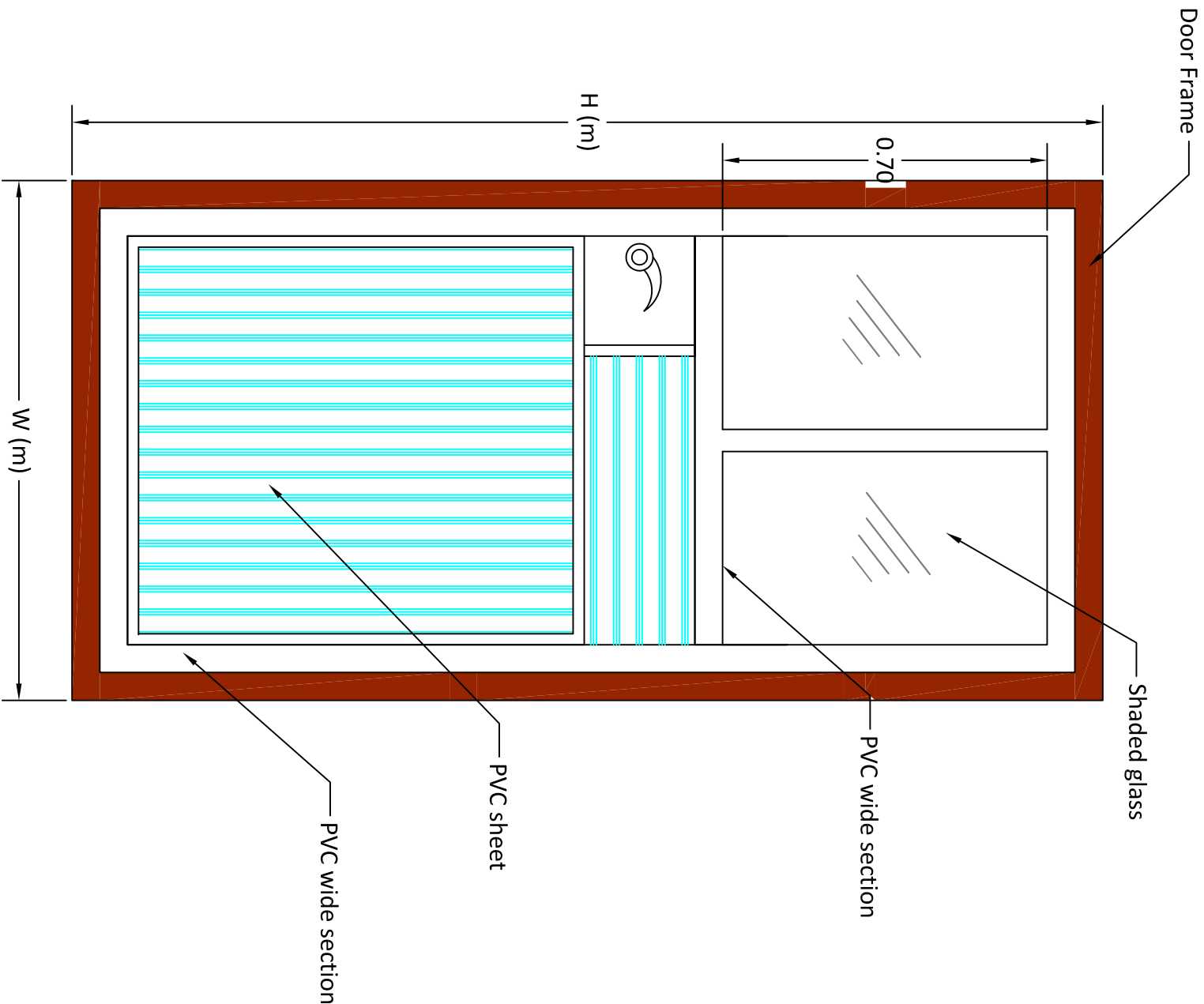


Typical Drawings for Renovation		
Drawn by: Soran Rostam Aziz		
Sheet Title: Septic Tank Details		
Scale: NTS	Date:	DWG No.



Detail of Steel Door

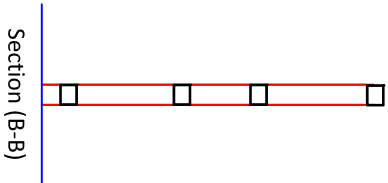
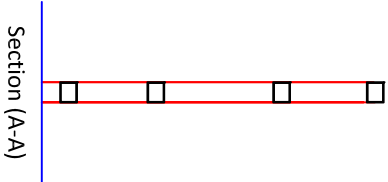
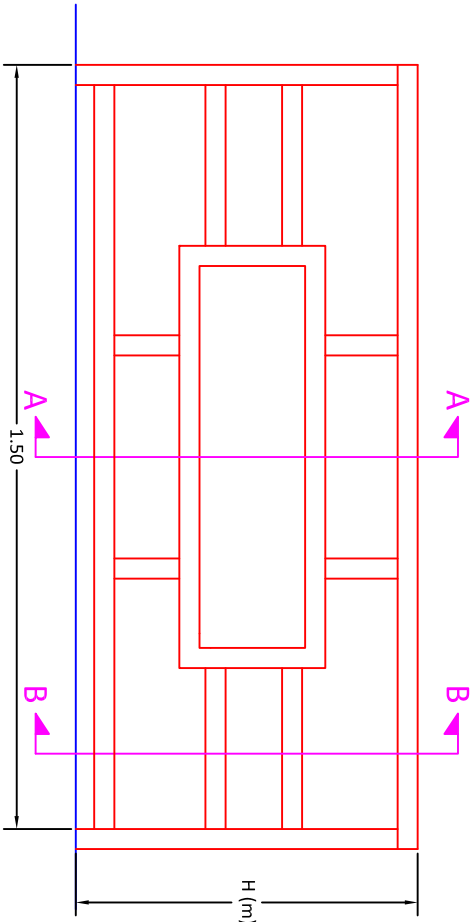
Typical Drawings for Renovation		
Drawn by: Soran Rostam Aziz		
Sheet Title: Detail of Single Leaf Steel Door		
Scale: NTS	Date:	DWG No.



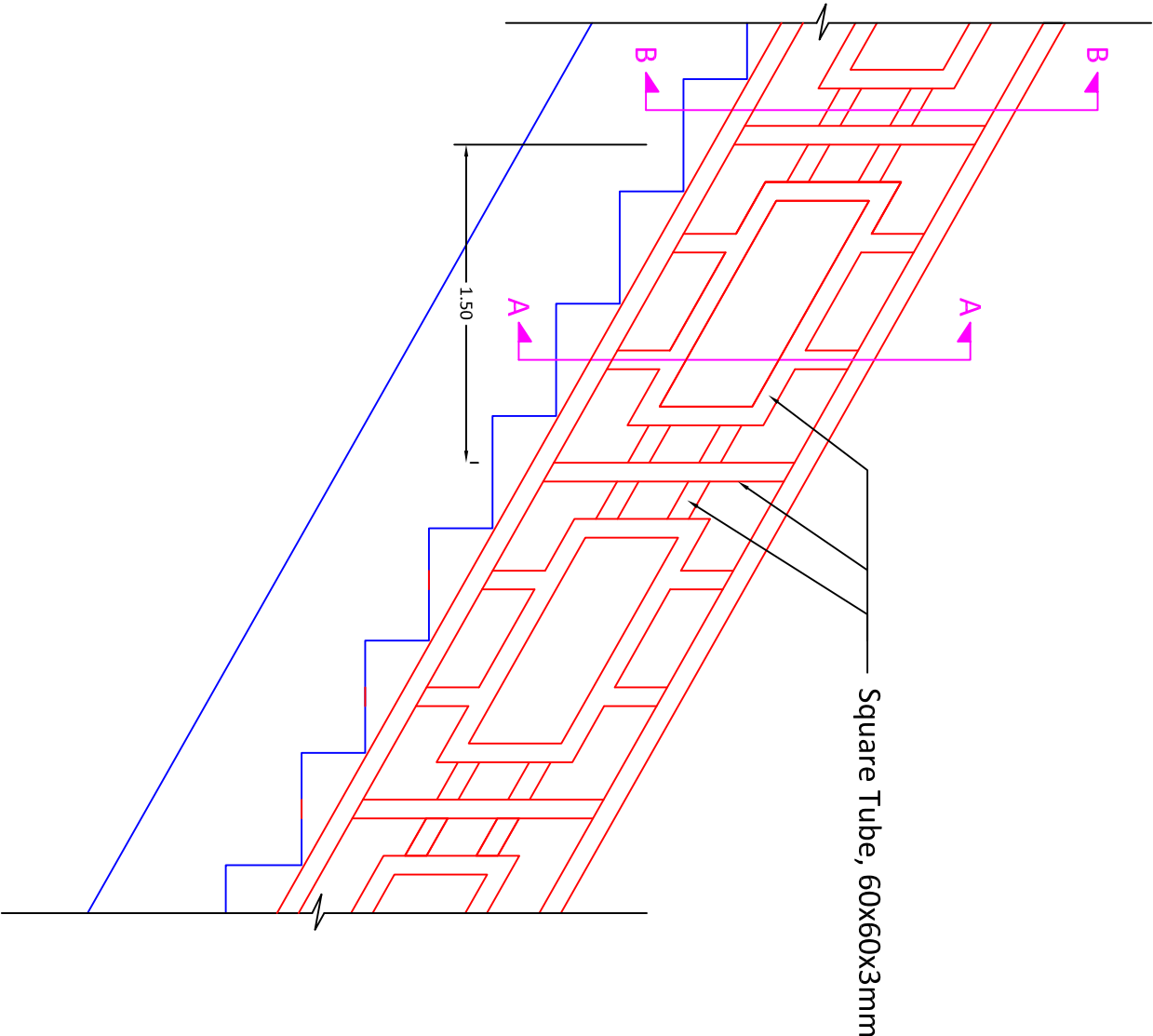
Detail of PVC Doors

Typical Drawings for Renovation		
Drawn by: Soran Rostam Aziz		
Sheet Title:		
Detail of Single PVC Doors		
Scale: NTS	Date:	DWG No.





Detail of the Handrail



Typical Drawings for Renovation

Drawn by: Soran Rostam Aziz

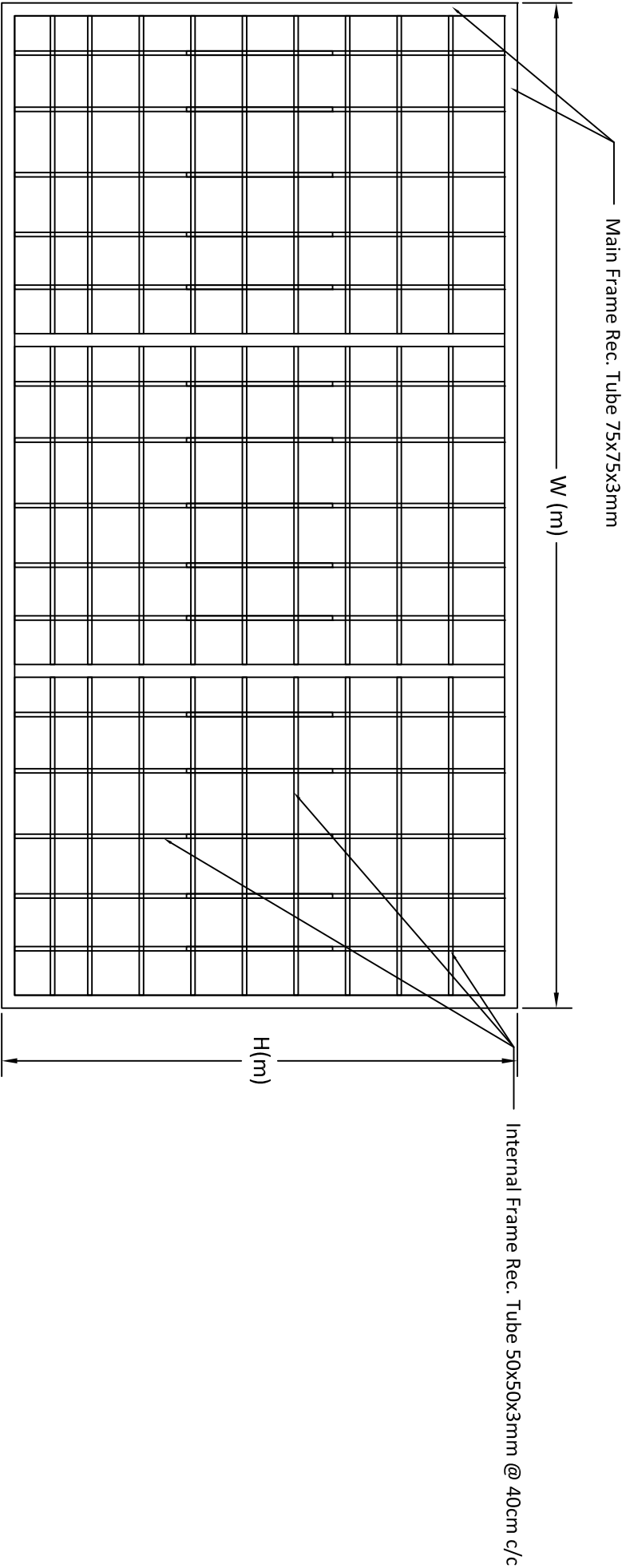
Sheet Title:

Detail of Steel Handrail

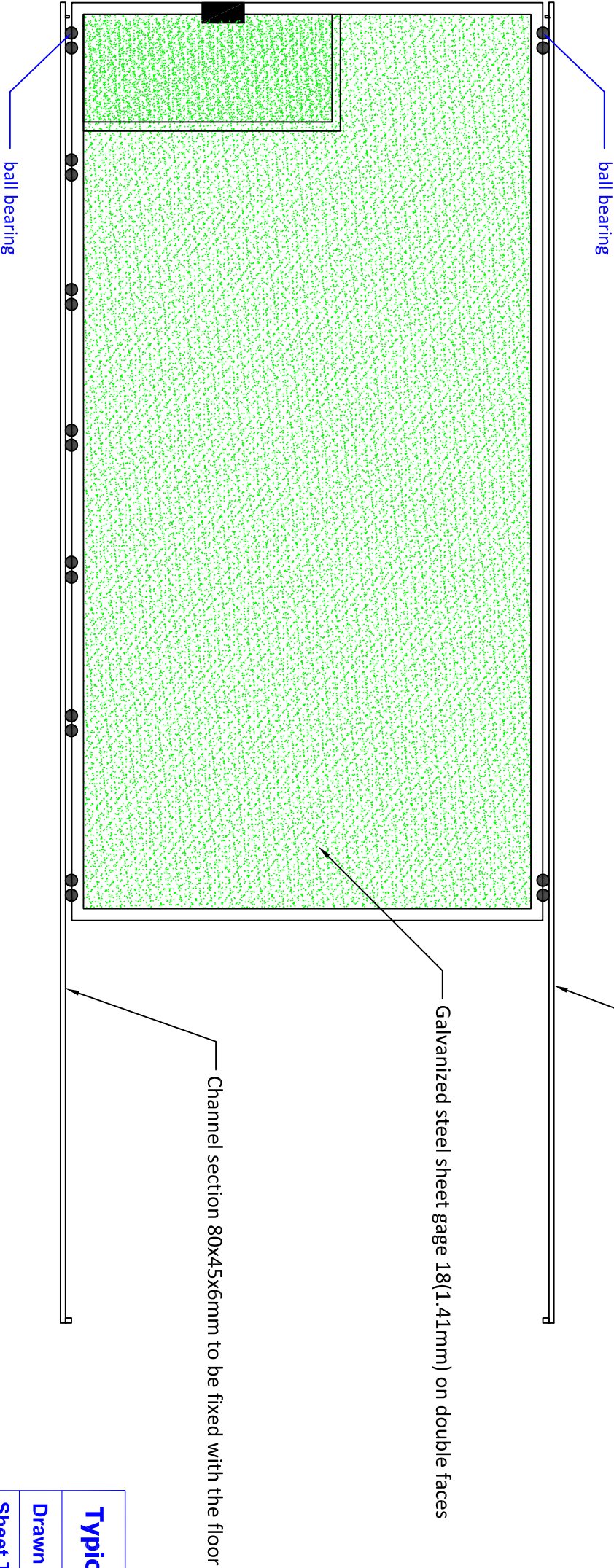
Scale: NTS

Date:

DWG No.



Main Frame of the sliding door



Typical Drawings for Renovation

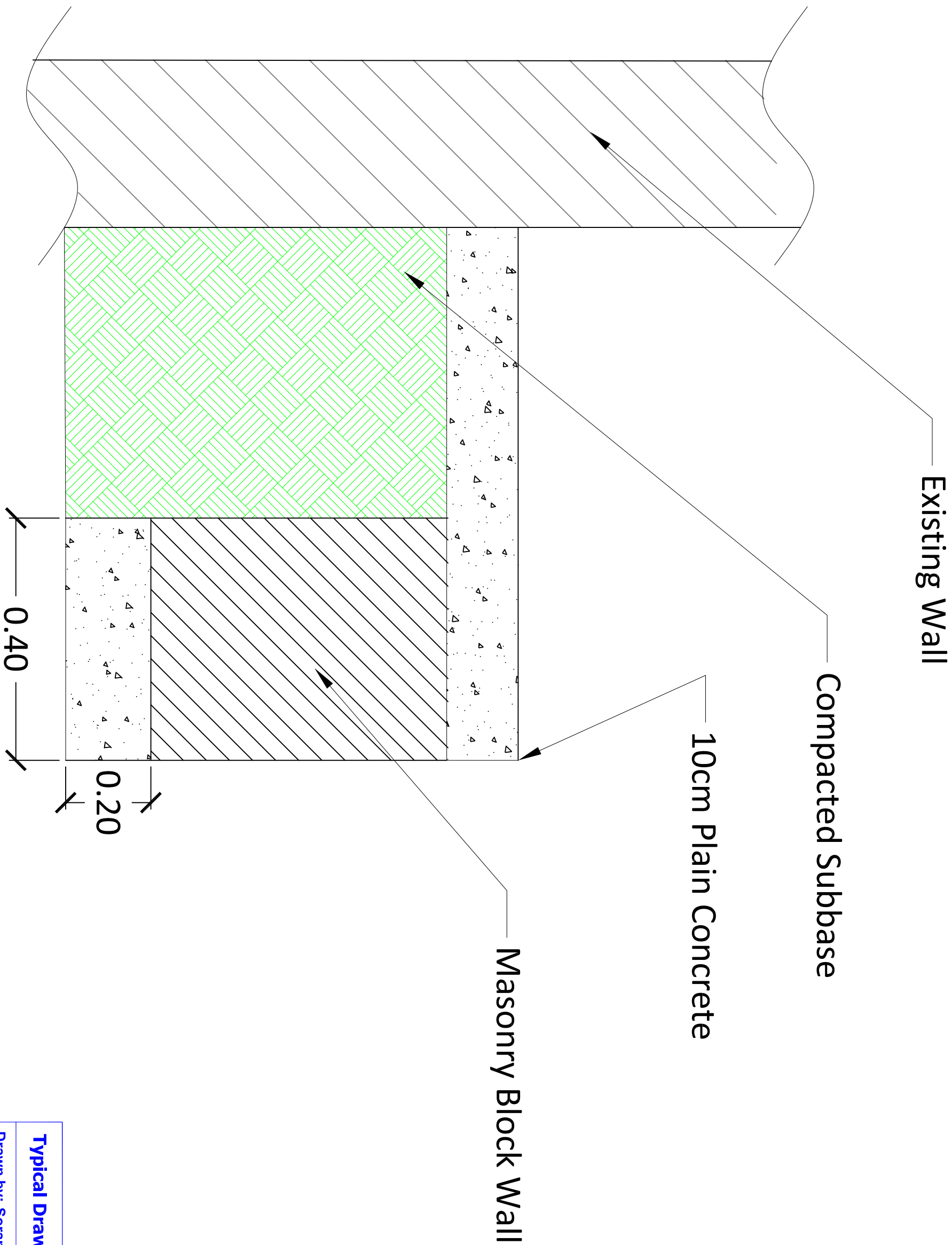
Drawn by: Soran Rostam Aziz

Sheet Title:  
Detail of Sliding Door (One Leaf) with  
(1x2m) small door

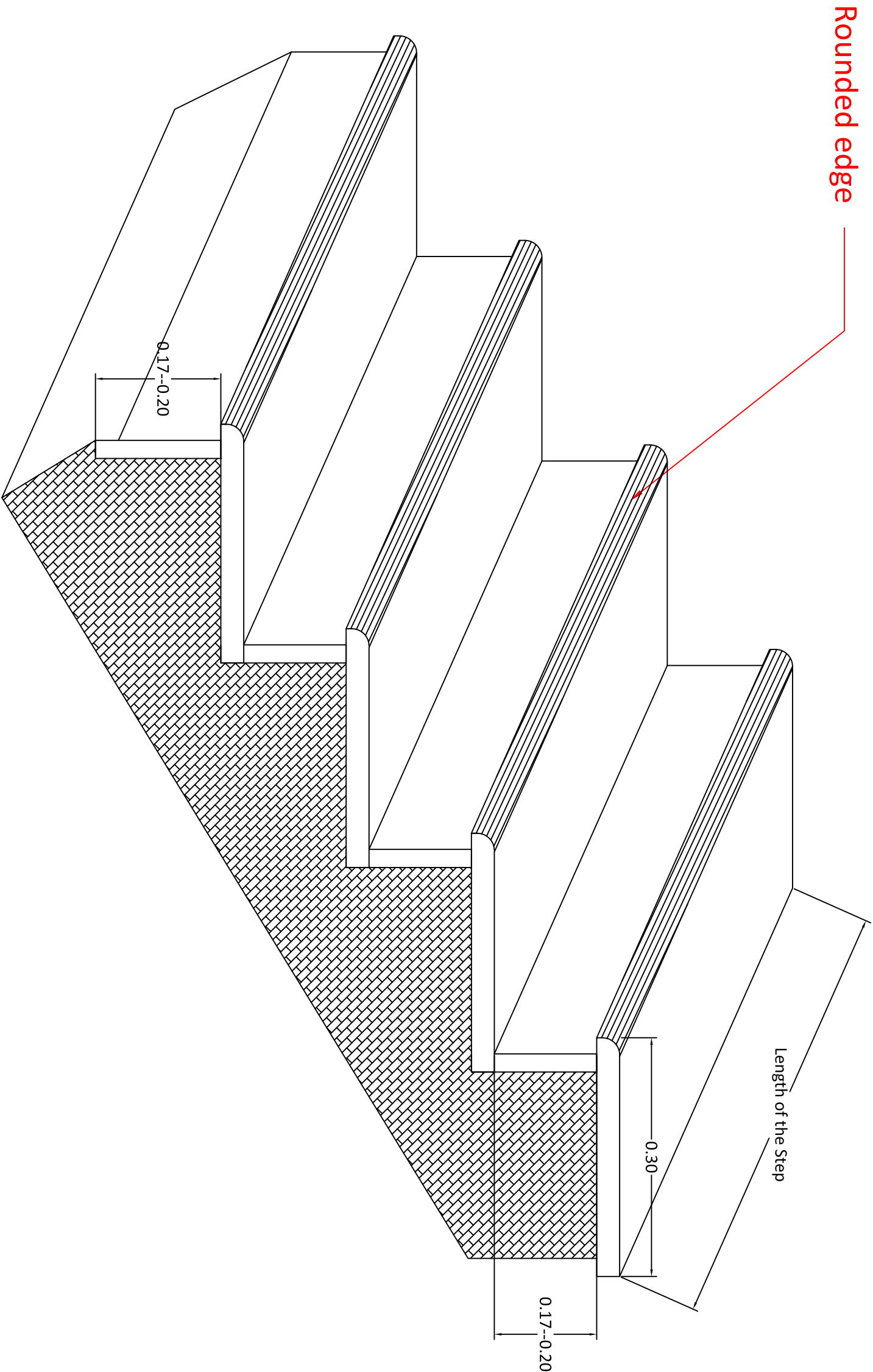
Scale: NTS

Date:

DWG No.



Typical Drawings for Renovation		
Drawn by: Soran Rostam Aziz		
Sheet Title:		
Detail of Surrounding sidewalk		
Scale: NTS	Date:	DWG No.



### Typical Drawings for Renovation

Drawn by: Soran Rostam Aziz

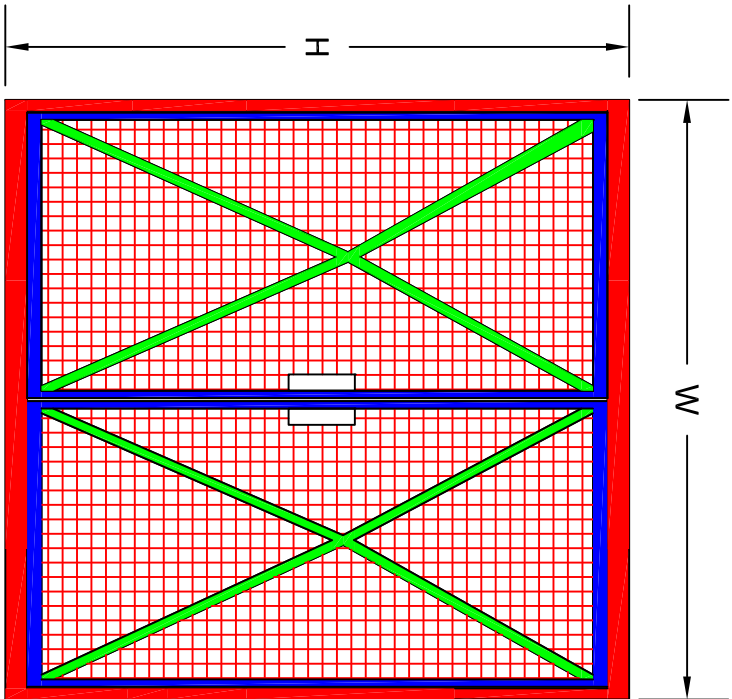
Sheet Title:

Detail of Staircase(Riser & Tread)

Scale: NTS

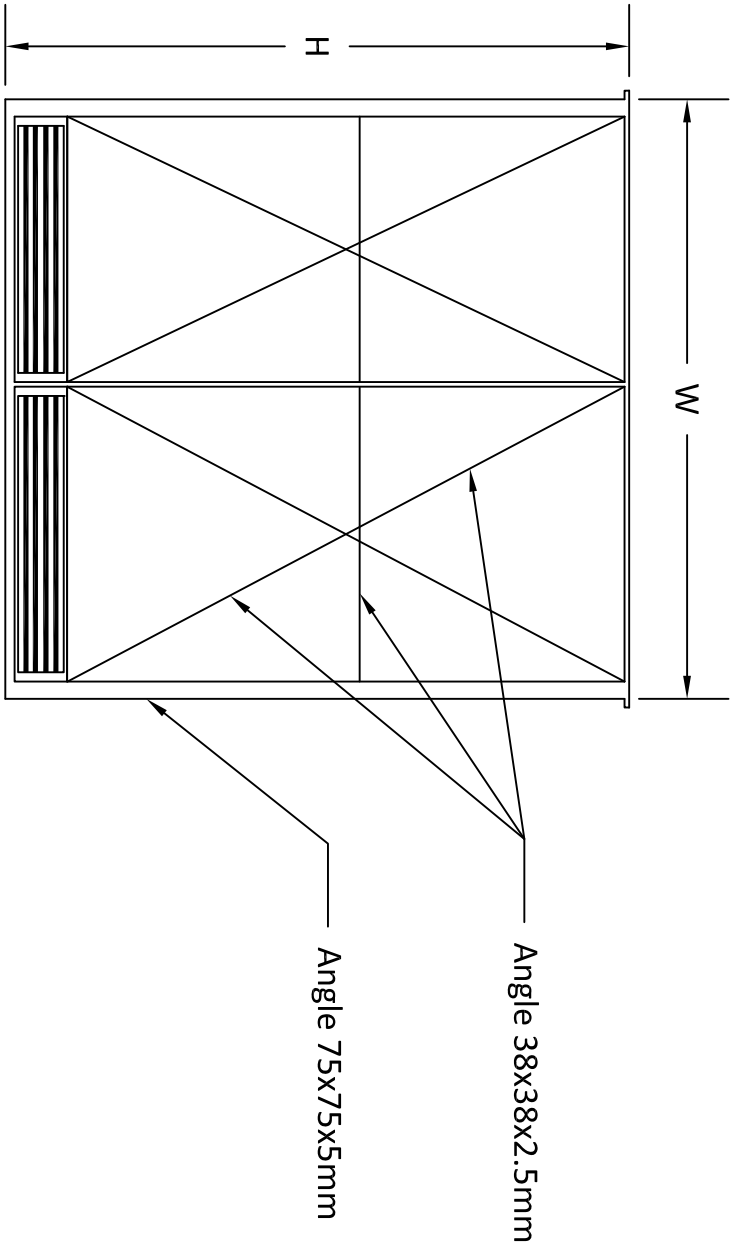
Date:

DWG No.

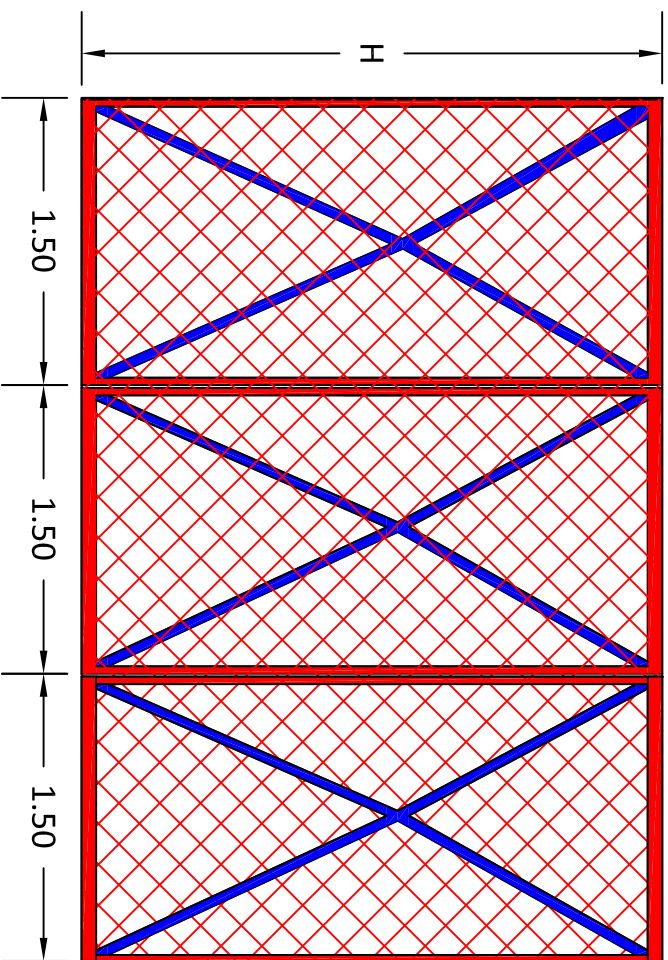


Door Protection

- Iron Angle 75 x 75 x 3 mm
- Iron Angle 50 x 50 x 3 mm
- Iron Angle 38 x 38 x 2.5 mm
- BRC 50x50x4mm



Steel Door



- Iron Angle 75 x 75 x 3 mm
- Iron Angle 50 x 50 x 3 mm
- BRC 100x100x4mm

BRC Fence

Typical Drawings for Renovation

Drawn by: Soran Rostam Aziz

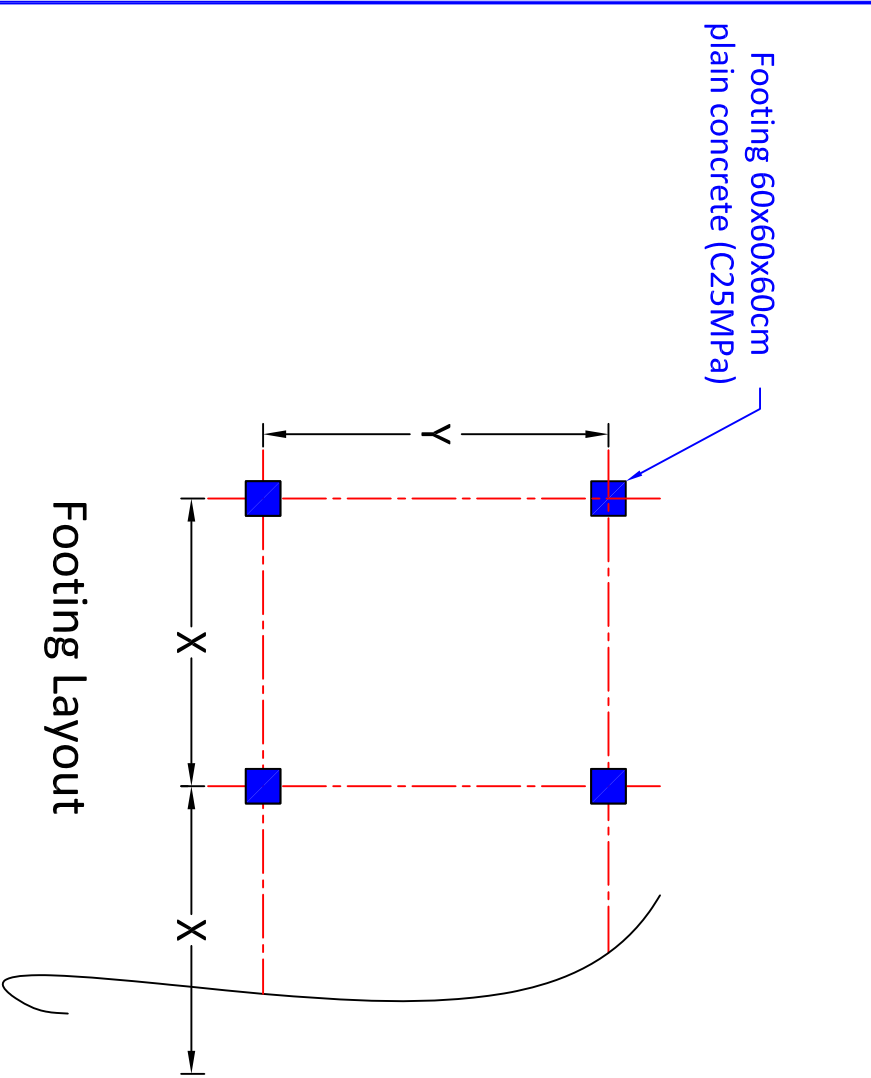
Sheet Title:

Detail of the BRC Fence and Door

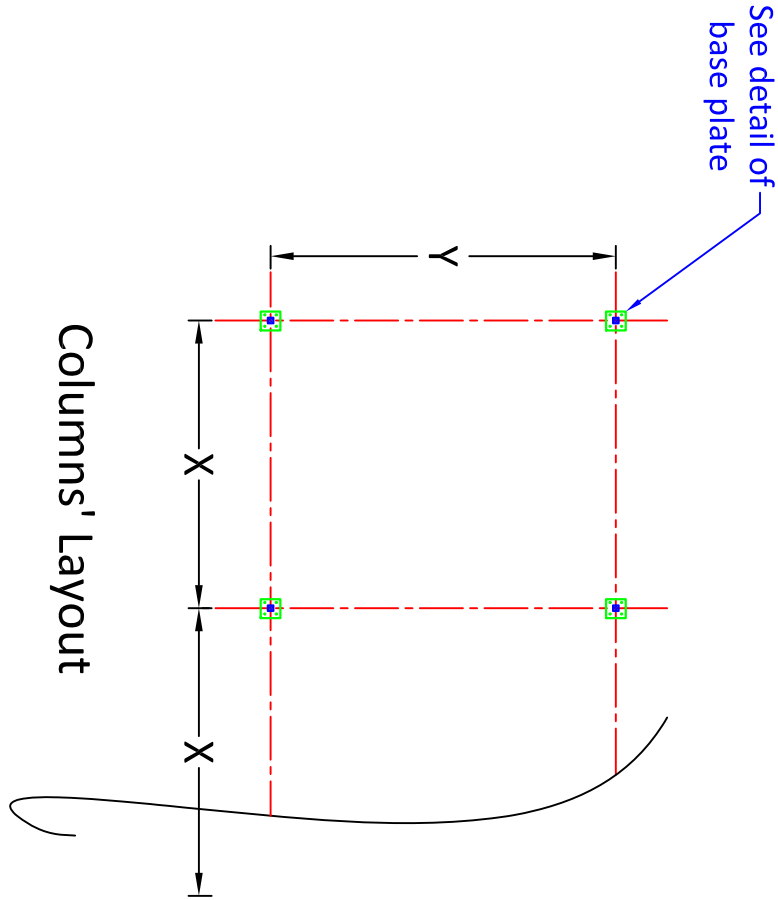
Scale: NTS

Date:

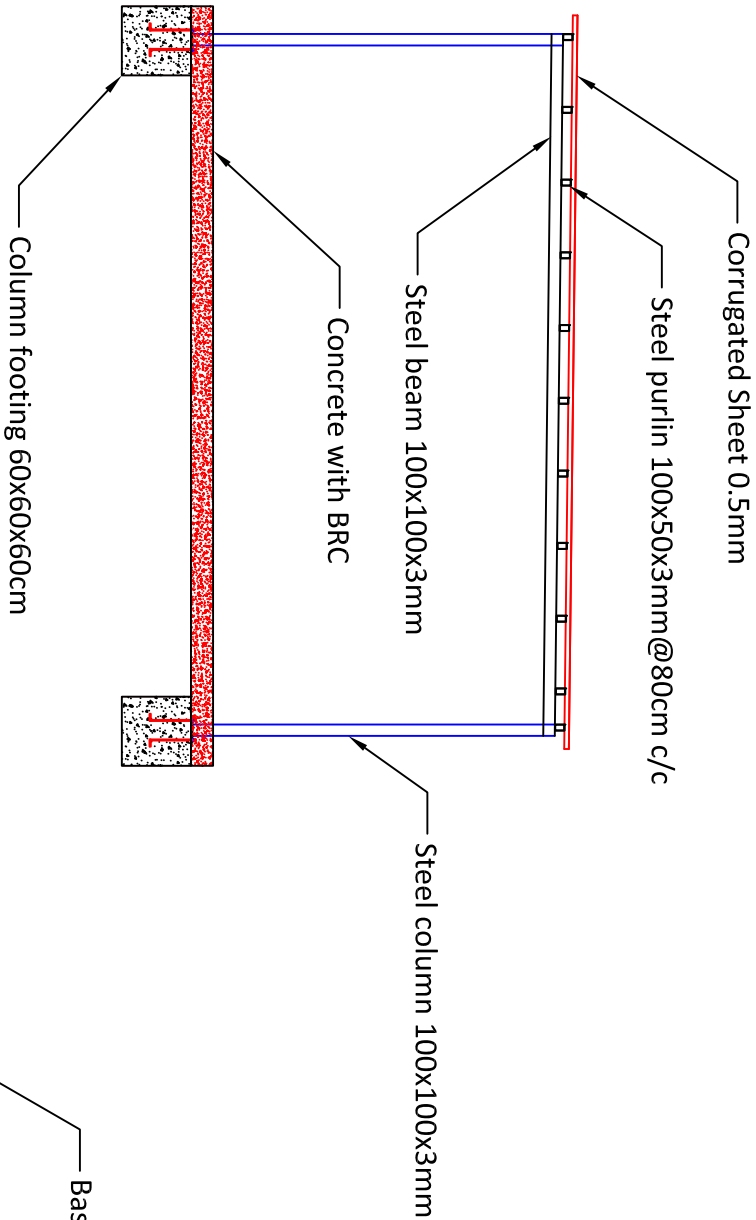
DWG No.



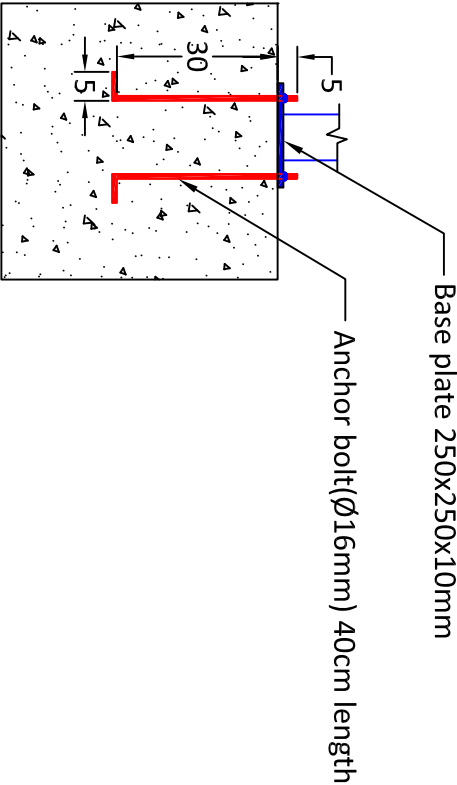
Footing Layout



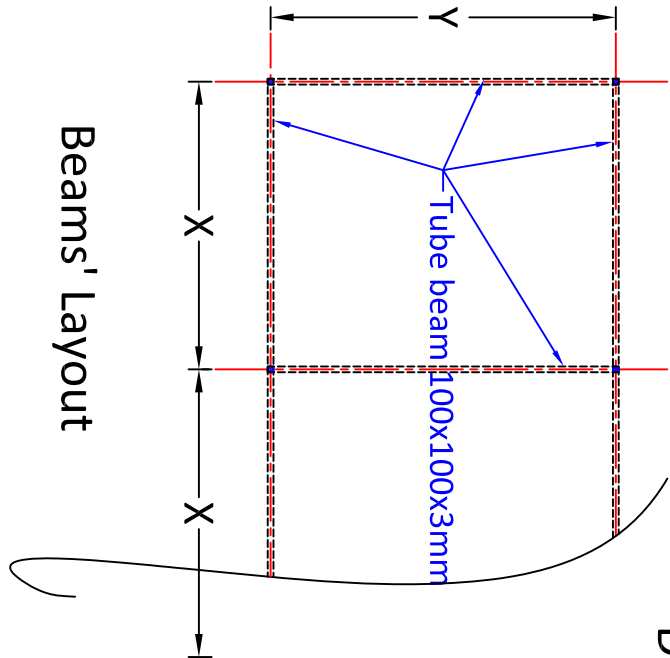
Columns' Layout



Section of the sun shed



Detail of column footing and base plate



Beams' Layout

Typical Drawings for Renovation			
Drawn by: Soran Rostam Aziz			
Sheet Title: Detail of Sun Shed spanning in one directions			
Scale: NTS	Date:	DWG No.	