

Annex 1: BoQs for Pre-fab Construction Work of YMACC in ADEN

Item	Description	unit	Qty.
1	Caravan		
1.1	<p>Caravan for the Offices:</p> <p>Supply and install of Prefab Caravan from sandwich panel 8 cm thickness pressure 40 from the foam with net size 10mx3x2.5m as shown in the drawings. Item Including two doors with size 0.90 x2 m which includes handles, locked and rubber. Four sliding aluminum windows as per in the drawings, wooden look coat; the windows include fly screens, silicon sealant, glass 6mm each layer, rubber, handles, Italian wheels, and locked.</p> <p>Base frame is constructed of structural steel members of different profile welded together to give optimum rigidity to the floor, main beams I 18x9cmx6 mm around the Caravan, L section 8*8 cm*5mm as frame under the outer walls. Item includes partition with IPE 140 under it, rain shade on the top of the door and windows, all caravan edge must be sandwich panel, and steel tube with 80*40 mmx2mm as secondary beams distributed each 60 cm and where the connection between plate, and tube section in the long direction, all steel parts must be coated by two layers of anti-rust coating) and water proof painting, ten concrete foundations with 50 x 50 x 50 cm with 4 ø 14 / m as a box with 280 kg/cm2, cement block with 40 cm height including plastering and painting using water proof painting at least three layers as shown in the drawings. Marble stairs with 130cm & 160cmx 30 cmx 3mm for the runner and riser and 1x1m for the flight with cement block, backfilling fine sand, insulating the caravan from inside no steel material will be shown, aluminum section with 5x5cm for fixing the walls with floor and with roofs from inside and outside, covering the sandwich panel for the roof, sandwich panel overlap should be screwed, wallpapers sticker for all walls.</p> <p>The floor first layer is steel sheet of 1.50 mm for all floors, then then then plywood layer of 18mm covered by packaging flog vinyl 3.5 mm.</p> <p>Item includes all civil works required such excavation, the foundation should be placed at least 30 cm under the existing level, works under this item include all civil works required even if not mentioned explicitly in the bills of quantities, insulation for exposing surfaces of underground reinforced concrete elements with two coats of hot bituminous, insulation under foundation with polyethylene, watering the concrete after the casting, testing the steel and concrete then providing test results certificates, storing and saving of samples, and curing concrete, smooth face. Preliminary installations for Electrical, cutting the walls to install the windows and doors, all bolts for installation, welding E70, grouting, levelling, lifting, cleaning and leveling the ground before the construction work, the caravan must sit on zero level with no slops for the rooms, and all the requirements to finish this item according to drawings, specifications, conditions and direct instructions by the Engineer or his representative. The contractor must be providing a sample of Sandwich Panel to adopted before implementation</p>	No	2

Annex 1: BoQs for Pre-fab Construction Work of YMACC in ADEN

Item	Description	unit	Qty.
1.2	<p>Caravan for the Offices:</p> <p>Supply and install of Prefab Caravan from sandwich panel 8 cm thickness pressure 40 from the foam with net size 6mx3x2.5m as shown in the drawings. Item Including door with size 0.90 x2 m which includes handles, locked and rubber. two sliding aluminum windows as per in the drawings, wooden look coat; the windows include fly screens, silicon sealant, glass 6mm each layer, rubber, handles, Italian wheels, and locked.</p> <p>Base frame is constructed of structural steel members of different profile welded together to give optimum rigidity to the floor, main beams I 16x8cmx6 mm around the Caravan, L section 8*8 cm*5mm as frame under the outer walls. Item includes rain shade on the top of the door and windows, all caravan edge must be sandwich panel, and steel tube with 80*40 mmx2mm as secondary beams distributed each 60 cm and where the connection between plate, and two tube section in the long direction, all steel parts must be coated by two layers of anti-rust coating) and water proof painting, six concrete foundations with 50 x 50 x 50 cm with 4 ø 14 / m as a box with 280 kg/cm2, cement block with 40 cm height including plastering and painting using water proof painting at least three layers as shown in the drawings. Marble stairs with 130cm & 160cmx 30 cmx 3mm for the runner and riser and 1x1m for the flight with cement block, backfilling fine sand, insulating the caravan from inside no steel material will be shown, aluminum section with 5x5cm for fixing the walls with floor and with roofs from inside and outside, covering the sandwich panel for the roof, sandwich panel overlap should be screwed, wallpapers sticker for all walls.</p> <p>The floor first layer is steel sheet of 1.50 mm for all floors, then then then plywood layer of 18mm covered by packaging flog vinyl 3.5 mm.</p> <p>Item includes all civil works required such excavation, the foundation should be placed at least 30 cm under the existing level, works under this item include all civil works required even if not mentioned explicitly in the bills of quantities, insulation for exposing surfaces of underground reinforced concrete elements with two coats of hot bituminous, insulation under foundation with polyethylene, watering the concrete after the casting, testing the steel and concrete then providing test results certificates, storing and saving of samples, and curing concrete, smooth face. Preliminary installations for Electrical, cutting the walls to install the windows and doors, all bolts for installation, welding E70, grouting, levelling, lifting, cleaning and leveling the ground before the construction work, the caravan must sit on zero level with no slops for the rooms, and all the requirements to finish this item according to drawings, specifications, conditions and direct instructions by the Engineer or his representative. The contractor must be providing a sample of Sandwich Panel to adopted before implementation.</p>	No	1
2	Electrical Work for Prefabs		

Annex 1: BoQs for Pre-fab Construction Work of YMACC in ADEN

Item	Description	unit	Qty.
2.1	Supply install, test and commission complete LED lighting. Color temperatures (CCT) shall be at least 5000 K (White LED), lamp Luminous Flux shall be at least 1500 lum, input voltage 240V, Lamp Luminous Efficiency (lm/w) shall be at least 90%. IP20, Operation Temperature shall be 20°C to 50°C. Working Lifetime shall be at least 20000 h. Warranty shall be 2 Years, and be certified from CE, RoHS, SASO, UL. Temperature rise not greater than 20 degrees centigrade. The lighting fixtures shall be with 2x1.5+1X1.5 sq. mm PVC insulated multistring copper conductor cable (Saudi cable or equivalent) in recessed 25mm dia PVC pipe, including all excavation, backfilling, removing the tiles then reinstallation again, cutting the concrete then recasts it again, Trunking, connections, suspension, clamps, switches as per in the drawings, and all other accessories necessary to provide a complete fitting with all terminals as shown on the drawings and specifications for the following:		
2.1.1	Supply, install, connect and test ceiling mounted lighting fixture with 2x 18W lamp.	No.	12
2.1.2	Supply and install waterproof 20w outdoor decorative led luminaire IP55	No.	8
2.2	<u>New . SDB 1φ 40&32A Indoor</u> Supply, install, test and commission secondary distribution boards (Schneider, Hager or equivalent), complete with circuit breaker on incoming supply connection. The distribution boards shall be of metal-clad pattern complete with all circuit breakers, casing, busbar, protection equipment having sufficient connections for all circuit breakers, cutting the wall to install the board, installation of wooden plate, all in according with requirements of the specifications, drawings and codes of practice:	Note	
2.1.1	Outdoor Sub-distribution board (SBD), 12 way outs,	NO.	2
2.1.2	Outdoor Sub-distribution board (SBD), 8 way outs,	NO.	1
2.1.3	MCCB 1φ 40Amp 2P , 230volt 1φ. (Hager or equivalent)	NO.	2
2.1.4	MCCB 1φ 32Amp 2P , 230volt 1φ. (Hager or equivalent)	NO.	1
2.1.5	MCB Class B 16Amp,1P, 230 volt ,1φ. (Hager or equivalent)	NO.	15
2.1.6	MCB Class B 6Amp,1P, 230 volt ,1φ. (Hager or equivalent)	NO.	5
2.1.7	MCB Class B 10 Amp,1P, 230 volt ,1φ. (Hager or equivalent) "Spare"	NO.	6
2.3	Supply, install, test and commission a complete socket outlet point (Hager or equivalent) sq.mm, And (2x2.5+1x2.5) according to drawings of SDB plan, trunking (Legrand or equivalent) insulated multistrand copper conductor cable(Saudi cable or equivalent) , PVC insulated multistring copper conductor cable (Saudi cable or equivalent), including all , Trunking, connections, suspension, clamps, switches as per in the drawings, including all conductors, cables, drilling, conduits, boxes, make opening in the walls, labeling. Socket outlets and all connections between the appropriate distribution boards and the socket outlet or power connection point for the following:	Note	
2.3.1	2P+E DUPLEX SOCKET (13A-220V) (Hager or equivalent)	No.	20

Annex 1: BoQs for Pre-fab Construction Work of YMACC in ADEN

Item	Description	unit	Qty.
2.4	Cable to connect to MDB: Supply , install , test , and commissioning of power cables to connect between the MDB to the existing Second SDB and the main source: 600/1000/CU/PVC/PVC 3C*10mm +4mm the item shall include excavation in tiles/asphalt, compacted backfilling, PVC pipes, fittings, trunky (Legrand or equivalent).including all connection form the main source, circuit breaker, demolishing holes in walls/ concreter flooring wherever required to lay down the cable in conduits with glands and cable terminations.... etc., then reinstallation again, according to drawings	m	120
2.5	Cable to connect to MDB: Supply , install , test , and commissioning of power cables to connect between the MDB to the existing Second SDB and the main source: 600/1000/CU/PVC/PVC 3C*6mm +2.5mm the item shall include excavation in tiles/asphalt, compacted backfilling, PVC pipes, fittings, trunky (Legrand or equivalent). Including all connection form the main source, circuit breaker, demolishing holes in walls/ concreter flooring wherever required to lay down the cable in conduits with glands and cable terminations.... etc., then reinstallation again, according to drawings	m	30
2.6	Earthing system : Supply, install, test and commission complete earthing system for the following: Prefabs, and SDB, lighting, Sockets. Including all conductors, copper bars tap-clamps, fixing, earthing pits, manhole ...etc. Design of the system and all items shall be according to BS 7430, and ANSI IEEE Std 80 to obtain required earth resistance less then (5 Ω) . Manufacture shall be: Wallis (U.K.) or equivalent. All of which shall be according to the specifications, drawings. Codes of practice and highest prevailing engineering standards for the following main system component: Extendible copper electrodes, (suggested length: 1.6~2.4 m), Main earthing cable: copper bared 35mm length as required. And earthing cables for gensets, hanger frame, and any other equipment: insulated cooper 25mm, length as required Cupper earthing bar Pure Cupper plate with 50 x 50 x 3 mm Earth pit with manhole cast iron cover plate complete as per standard, the cover of the manhole is preferred be clearly stamped with grounding sign. Ground Enhancement Material (GEM) 20kg"	No.	1
2.7	AC 1.5 ton: Supply, install, test and commission complete of heat/ cool split unit air conditioning (inverter type LG, Samsung, General, or equivalent), (one outdoor-unit with one indoor-unit) cooling capacity 1.5 Ton, item includes switch, cable with 2C X 2.5 mm+1*2.5 Saudi from the SDB to each unit, PVC pipes, fittings, trunky (Legrand or equivalent), all the water pipes of the AC should be connected to the ground level, water proof box, fixing in the wall, all excavation, backfilling, removing the tiles then reinstallation again, cutting the concrete then recast it again, make an opening in the wall to connect the outdoor unite with the indoor all the requirement to finish this item all accessories complete as required per drawings.	No.	3

Annex 1: BoQs for Pre-fab Construction Work of YMACC in ADEN

Item	Description	unit	Qty.
2.8	<p>wall Fan : Installation, testing and commissioning of wall fan (USHA Pakistan or equivalent) with 70 watt capacity, and size 60x60cm. including wiring the down rods 45 cm, RLS PVC insulated, PVC conduit, copper conductor, Trunkey, cable with 2.5 mm+1.5 mm to connect to the SDB, including providing and fixing phenolic laminated sheet cover on the fan box , switches, and all other accessories necessary to provide a complete fitting with all terminals as shown on the drawings and specifications and instructions of the supervising engineer.</p>	No.	5

Delivery location: YEMAC office, DAAR SAAD street,Aden,YEMEN

Delivery period : 1 month

1. QUANTITIES

Although practical care was exercised in preparing the BOQ, all quantities given herein shall be deemed to be estimated quantities of the work to be done. They are not to be taken as actual and correct quantities of the work to be executed and they do not absolve the contractor of his obligations under the Contract. At any time, the actual quantities increase or decrease, hence, it is understood that the actual quantities increase, or decrease is expected risk and no claim whatsoever will be taken into consideration for extra cost in that respect by employer. Any claim whatsoever submitted for cost or extra expenses incurred from such increase or decrease will not be accepted by Employer/Engineer except where else stipulated in the Contract.

2. MATERIALS

All materials used are to be of the best new available and subject to the Employer/Engineer approval, guaranteed, immutable and manufactured according to applicable Standards. Execution also is subject to approval of

Employer/Engineer and shall be the best available common practice in engineering codes at the time of execution. The Engineer-in-Charge shall be entitled to have tests carried out as specified as per relevant standard code of practice for any materials supplied by the Contractor even for those for which satisfactory proof has already been furnished, at the cost of the Contractor and the Contractor shall provide at his expense all facilities which the Engineer-in-Charge may require for the purpose such as instruments, machines, labor and materials. The cost of materials consumed in tests shall be borne by the Contractor. Storage and safe custody of material shall be the responsibility of the contractor and at places approved by the engineer-in-charge.

Items that contain materials or products of special make with names of manufacturers are to be taken as samples of what will be required. Subject to the Employer/Engineer approval, the Contractor may, at his discretion, offer similar products of other make if the equivalent quality of the specified materials is guaranteed. In this case, the Contractor shall submit a description and/or drawing showing all technical conditions, characteristics, make, type and address of Manufacturer ... etc., of the materials offered as alternatives.

The Employer/Engineer shall have authority to reject work which does not conform to the Contract Documents.

EXAMINATION OF WORK BEFORE COVERING UP.

No work shall be covered up or put out of view without the approval of the Engineer and the Contractor shall afford full opportunity for the Engineer to examine and measure any work which is about to be covered up or put out of view and to examine foundations before permanent work is placed thereon. The Contractor shall give due notice to the Engineer whenever any such work or foundations is or are ready or about to be ready for examination and the Engineer shall without unreasonable delay unless he considers it unnecessary and advises the Contractor accordingly to attend for the purpose of examining and measuring such work or of examining such foundations.

All steel section must be A36; and it must be paint with anti rust materials.

3. PRICES AND CURRENCY

The prices given, by the Contract, hereunder in the BOQ shall be in United States Dollars or ILS. Furthermore, inflation and escalation or changes whatsoever shall not be subject of claim later on.

The Unit Prices entered against the various items in the following Bill of Quantities include all operation costs for execution, completion and maintenance of the various items of the works finished completely in every respect

till the final acceptance as specified or described in the Tender Documents, with or without modifications, either by way of additions or deductions, or alterations as may be offered in writing during the progress of the works, and include, without being limited to, all what is deemed necessary particularly referred to in the Tender Documents. The Unit Price shall cover all costs of every kind whatsoever including, without being limited to, all charges for additional site installations, relocation, supervision, labor, transportation and supply of materials; the provision, maintenance, use and efficient repair of all plant, equipment and appliance of every kind, the construction and maintenance of all temporary works, the performance of all services and the fulfillment of all obligations and responsibilities herein defined.

The Tenderer shall be deemed to have fully considered all the conditions, obligations, and requirements of the Tender Documents before entering the respective unit price against the various items of the Bill of Quantities. The Unit Prices given hereunder the BOQ shall also include erection, installation, fixing, and re-fixing of all elements. These prices shall also include taxes, visa for labor, gate passes, accommodations for the Contractor's staff and labors, all required insurance and work permits, guarantees, bonds, traffic plan requirements, safety procedures, etc. and all requirements necessary to have the work maintained until its final handing over. The Unit Prices given hereunder in the Bill of Quantity for this work shall also include overheads, risks, profit etc. and all other financial matters to have all these civil works completed.

The works, materials or activities listed in the following shall always be considered as supportive works to be included in the Unit Prices bid for any item in the Bill of Quantities:

- Any measurement for execution and payment of the works, including the provision of measuring instruments, gauges, setting out marks, marking paint and relevant tools, labor, etc., the maintenance and preservation of gauges and setting-out marks during the execution of the works.
- Provision of small tackle tools or any other equipment required for the execution of the works.
- Supply of consumable materials for the Contractor's equipment.
- Removal of all contamination (refuse, debris, building rubbish and the like) arising from or in connection with the

Contractor's work to locations approved by the engineers

- Protection of the executed works and of the items made available for execution of the works from damage, fire, inclement weather, vandalism and theft etc., until the time of final acceptance.
- Transportation of all materials and structural components from the storage places on site to the points of use and return transportation, if required.
- Submitting and transporting any samples required. • Carrying out tests on materials and works, etc., that is required by the Engineer. • Fuel and lubricants for operation of Contractor's equipment.
- All safety precautions and measures for safeguarding labor as well as securing surrounding areas.
- Lighting of the work site.
- Maintenance, repair or reconstruct damaged infrastructure resulted by contractor's activities

4. RIGHTS OF UNDP

The following rights are reserved to UNDP:

- To omit individual items mentioned in the Schedule of Prices if not required in the opinion of UNDP and/or to replace them should it be more advantageous to execute them in another way.
- To order execution of alternative or provisional items as if they were main items.
- To order execution of additional works as well as alternatives of works, always in conformity with the conditions outlined in the Contract.

Any order and/or delivery of material or equipment by the Contractor for performance of the works may only be based on instructions and/or approved execution drawings by UNDP/Engineer.

All equipment and materials for installation and finishing works to be incorporated in this contract shall prior to ordering and/or delivery by the Contractor, be approved by UNDP/Engineer both in respect of quality and type

as well as of quantity.

5. SITE ACCESS AND STORAGE

The Tenderer shall visit all sites and ascertain the location of required access onto these sites and the location of allowance for complying with the requirements and for the reinstatement to original condition of all roads and areas used or disturbed by the Contractor to the satisfaction of the Engineer.

6. SITE INSTALLATION

All costs of labor, works, provisions, materials and equipment for Site Installations required by the Contractor and stipulated in the Tender Documents shall be included in the various unit prices of the Bill of Quantities. No extra payment will be allowed by UNDP for any of these activities.

7. DURATION

The total duration of the contract is one calendar month including weekends, holidays and official holidays. Official weekends are Fridays and Saturdays.

8. General CONTRACTOR'S OBLIGATIONS:

- The Contractor has to submit Detailed Shop Drawings to be approved by the Engineer before commencement of the work, and all required materials should be supplied as specified and subject to the Engineer approval.
- The Contractor has to fix the underground services that may be damaged during his work.
- All works has to be done according to the Engineer's instructions, Drawings and specification.
- The Contractor has to repair any damages of any services at full satisfaction of relevant Service Authority • The contractor has to test on his own expenses, the sub-grade CBR before commencement of work, In case the CBR value less than 15%, then soil replacement should be applied.
- Price will include costs of removing and/or relocating of all obstacles such as debris, garbage, trees and existing services in addition to the required materials necessary for work completion according to engineer's instructions and specifications.
- From commencement to completion of the works, the Contractor shall take full responsibility, care of and precautions to prevent loss or damage and to minimize loss or damage to the greatest extent possible and shall be liable for any damage or loss that may happen to the Works or any part thereof from any cause whatsoever (save and except the Excepted Risks) and shall at his own cost repair and make good the same so that, at completion, the works shall be in good order and conditions and in conformity in every respect with the requirements of the Contract and instructions of the Engineer-in-Charge.
- The Contractor shall indemnify and keep indemnified UNDP all losses and claims for injuries or damage to any persons or any property whatsoever which may arise out of or in consequence of the construction and maintenance of works and against all claims, demands proceedings, damages costs, charges and expenses whatsoever in respect of or in relation thereto.
- The contractor will have to make their own arrangement for facilitating movement of labor and materials to work site and back.
- Installation of fence around the whole land with at least 3 m height to separate the work in the site.
- The contractor shall provide and maintain at his own expenses fencing and safety signs when and where necessary or required by the Engineer-in-Charge for the protection of the works or for the safety and convenience of those employed on the works or the public.
- If any Urgent work (in respect whereof the decision of the Engineer-in-Charge shall be final and binding)

1. QUANTITIES

Although practical care was exercised in preparing the BOQ, all quantities given herein shall be deemed to be estimated quantities of the work to be done. They are not to be taken as actual and correct quantities of the work to be executed and they do not absolve the contractor of his obligations under the Contract. At any time, the actual quantities increase or decrease, hence, it is understood that the actual quantities increase, or decrease is expected risk and no claim whatsoever will be taken into consideration for extra cost in that respect by employer. Any claim whatsoever submitted for cost or extra expenses incurred from such increase or decrease will not be accepted by Employer/Engineer except where else stipulated in the Contract.

2. MATERIALS

All materials used are to be of the best new available and subject to the Employer/Engineer approval, guaranteed, immutable and manufactured according to applicable Standards. Execution also is subject to approval of

Employer/Engineer and shall be the best available common practice in engineering codes at the time of execution. The Engineer-in-Charge shall be entitled to have tests carried out as specified as per relevant standard code of practice for any materials supplied by the Contractor even for those for which satisfactory proof has already been furnished, at the cost of the Contractor and the Contractor shall provide at his expense all facilities which the Engineer-in-Charge may require for the purpose such as instruments, machines, labor and materials. The cost of materials consumed in tests shall be borne by the Contractor. Storage and safe custody of material shall be the responsibility of the contractor and at places approved by the engineer-in-charge.

Items that contain materials or products of special make with names of manufacturers are to be taken as samples of what will be required. Subject to the Employer/Engineer approval, the Contractor may, at his discretion, offer similar products of other make if the equivalent quality of the specified materials is guaranteed. In this case, the Contractor shall submit a description and/or drawing showing all technical conditions, characteristics, make, type and address of Manufacturer ... etc., of the materials offered as alternatives.

The Employer/Engineer shall have authority to reject work which does not conform to the Contract Documents.

EXAMINATION OF WORK BEFORE COVERING UP.

No work shall be covered up or put out of view without the approval of the Engineer and the Contractor shall afford full opportunity for the Engineer to examine and measure any work which is about to be covered up or put out of view and to examine foundations before permanent work is placed thereon. The Contractor shall give due notice to the Engineer whenever any such work or foundations is or are ready or about to be ready for examination and the Engineer shall without unreasonable delay unless he considers it unnecessary and advises the Contractor accordingly to attend for the purpose of examining and measuring such work or of examining such foundations.

All steel section must be A36; and it must be paint with anti rust materials.

3. PRICES AND CURRENCY

The prices given, by the Contract, hereunder in the BOQ shall be in United States Dollars or ILS. Furthermore, inflation and escalation or changes whatsoever shall not be subject of claim later on.

The Unit Prices entered against the various items in the following Bill of Quantities include all operation costs for execution, completion and maintenance of the various items of the works finished completely in every respect till the final acceptance as specified or described in the Tender Documents, with or without modifications, either by way of additions or deductions, or alterations as may be offered in writing during the progress of the works, and include, without being limited to, all what is deemed necessary particularly referred to in the Tender Documents. The Unit Price shall cover all costs of every kind whatsoever including, without being limited to, all charges for additional site installations, relocation, supervision, labor, transportation and supply of materials; the

provision, maintenance, use and efficient repair of all plant, equipment and appliance of every kind, the construction and maintenance of all temporary works, the performance of all services and the fulfillment of all obligations and responsibilities herein defined.

The Tenderer shall be deemed to have fully considered all the conditions, obligations, and requirements of the Tender Documents before entering the respective unit price against the various items of the Bill of Quantities. The Unit Prices given hereunder the BOQ shall also include erection, installation, fixing, and re-fixing of all elements. These prices shall also include taxes, visa for labor, gate passes, accommodations for the Contractor's staff and labors, all required insurance and work permits, guarantees, bonds, traffic plan requirements, safety procedures, etc. and all requirements necessary to have the work maintained until its final handing over. The Unit Prices given hereunder in the Bill of Quantity for this work shall also include overheads, risks, profit etc. and all other financial matters to have all these civil works completed.

The works, materials or activities listed in the following shall always be considered as supportive works to be included in the Unit Prices bid for any item in the Bill of Quantities:

- Any measurement for execution and payment of the works, including the provision of measuring instruments, gauges, setting out marks, marking paint and relevant tools, labor, etc., the maintenance and preservation of gauges and setting-out marks during the execution of the works.

- Provision of small tackle tools or any other equipment required for the execution of the works.

- Supply of consumable materials for the Contractor's equipment.

- Removal of all contamination (refuse, debris, building rubbish and the like) arising from or in connection with the

Contractor's work to locations approved by the engineers

- Protection of the executed works and of the items made available for execution of the works from damage, fire, inclement weather, vandalism and theft etc., until the time of final acceptance.

- Transportation of all materials and structural components from the storage places on site to the points of use and return transportation, if required.

- Submitting and transporting any samples required. • Carrying out tests on materials and works, etc., that is required by the Engineer. • Fuel and lubricants for operation of Contractor's equipment.

- All safety precautions and measures for safeguarding labor as well as securing surrounding areas.

- Lighting of the work site.

- Maintenance, repair or reconstruct damaged infrastructure resulted by contractor's activities

4. RIGHTS OF UNDP

The following rights are reserved to UNDP:

- To omit individual items mentioned in the Schedule of Prices if not required in the opinion of UNDP and/or to replace them should it be more advantageous to execute them in another way.

- To order execution of alternative or provisional items as if they were main items.

- To order execution of additional works as well as alternatives of works, always in conformity with the conditions outlined in the Contract.

Any order and/or delivery of material or equipment by the Contractor for performance of the works may only be based on instructions and/or approved execution drawings by UNDP/Engineer.

All equipment and materials for installation and finishing works to be incorporated in this contract shall prior to ordering and/or delivery by the Contractor, be approved by UNDP/Engineer both in respect of quality and type as well as of quantity.

5. SITE ACCESS AND STORAGE

The Tenderer shall visit all sites and ascertain the location of required access onto these sites and the location of allowance for complying with the requirements and for the reinstatement to original condition of all roads and

areas used or disturbed by the Contractor to the satisfaction of the Engineer.

6. SITE INSTALLATION

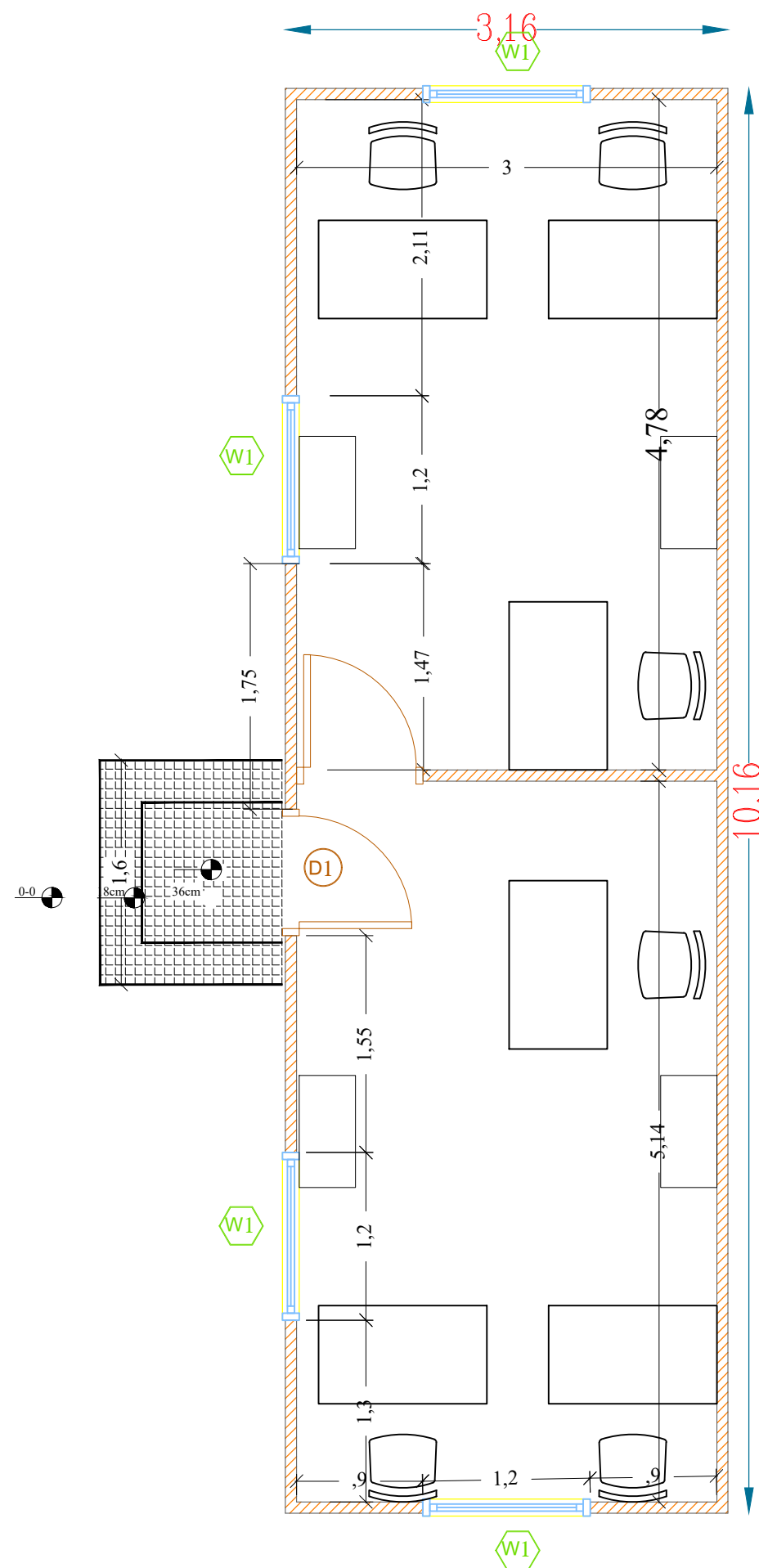
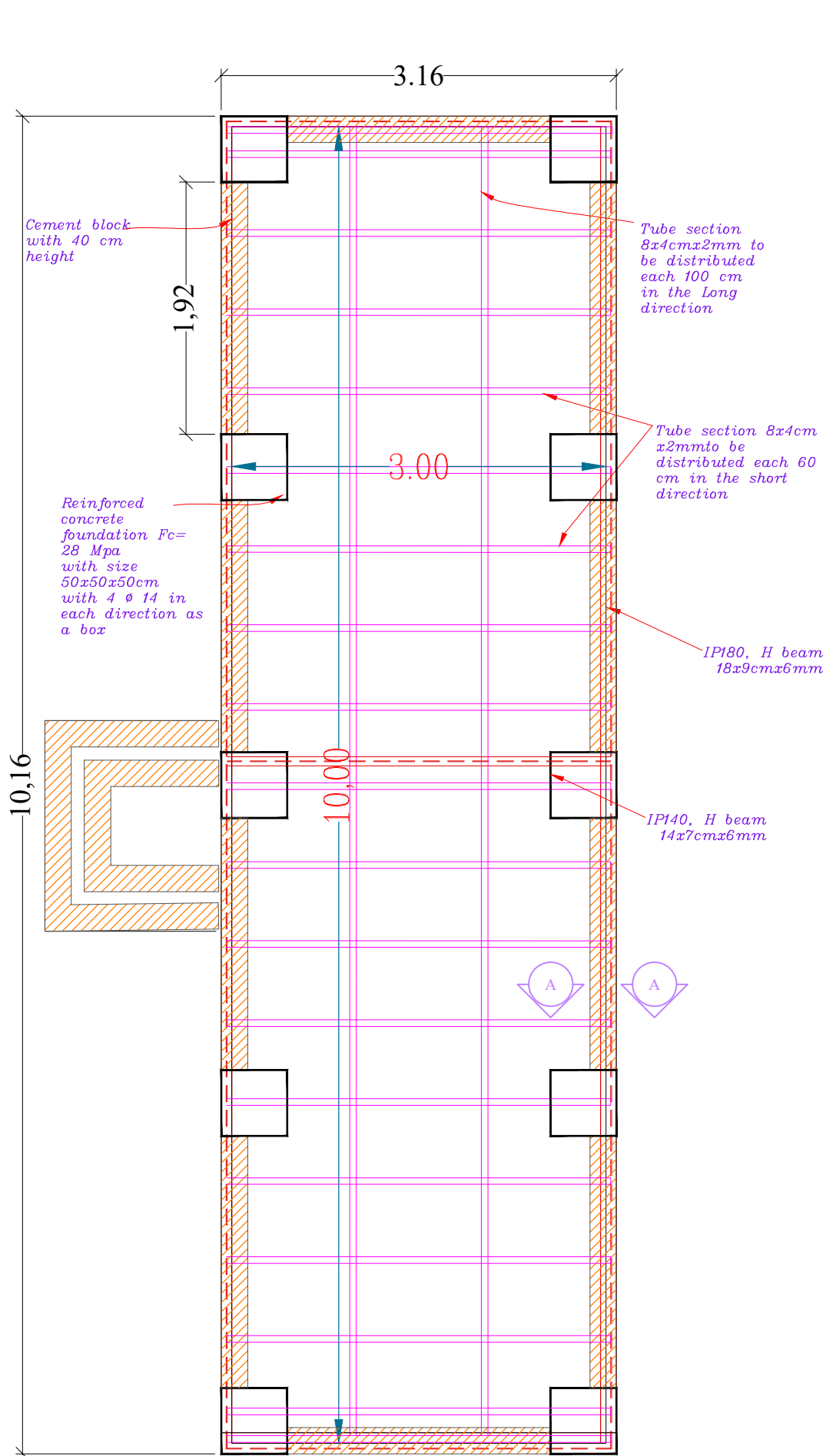
All costs of labor, works, provisions, materials and equipment for Site Installations required by the Contractor and stipulated in the Tender Documents shall be included in the various unit prices of the Bill of Quantities. No extra payment will be allowed by UNDP for any of these activities.



7. DURATION

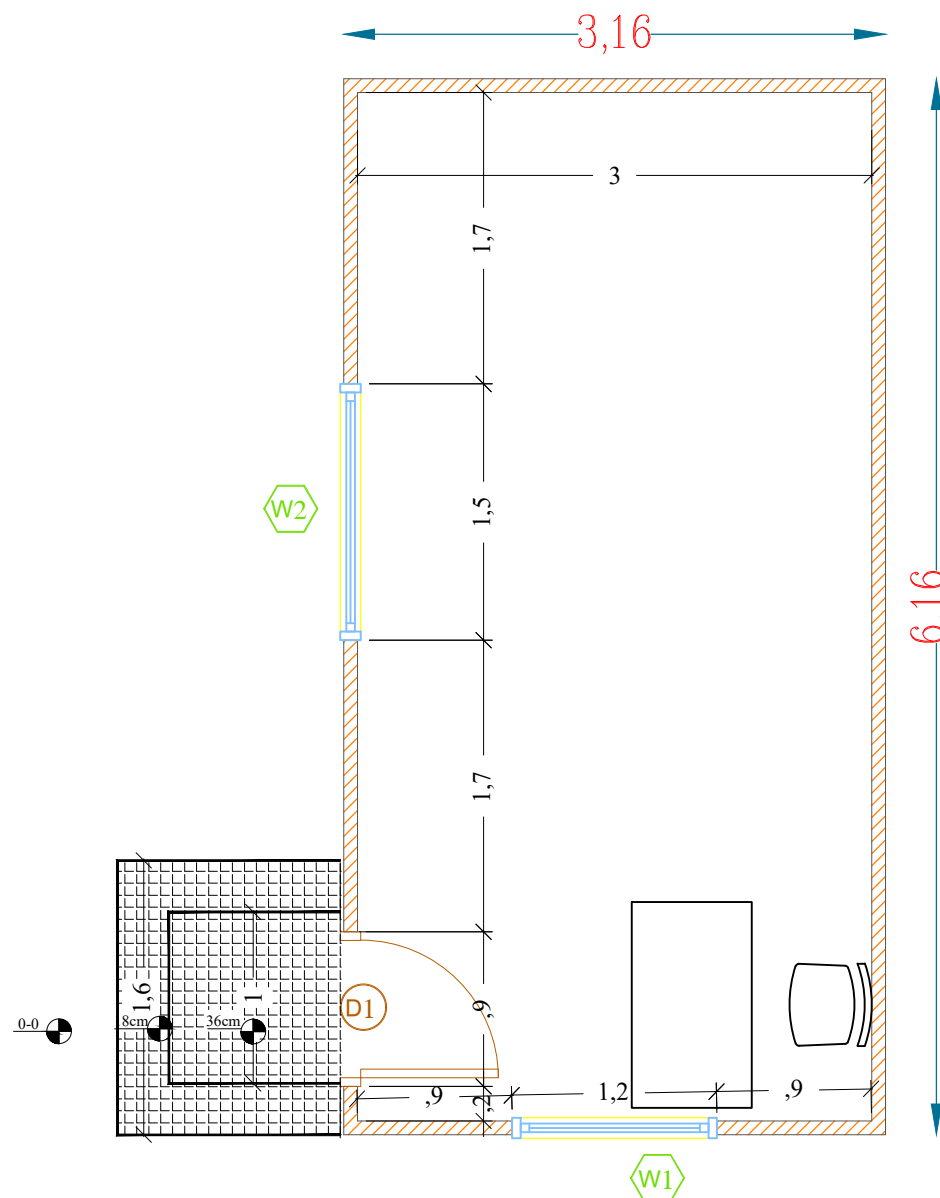
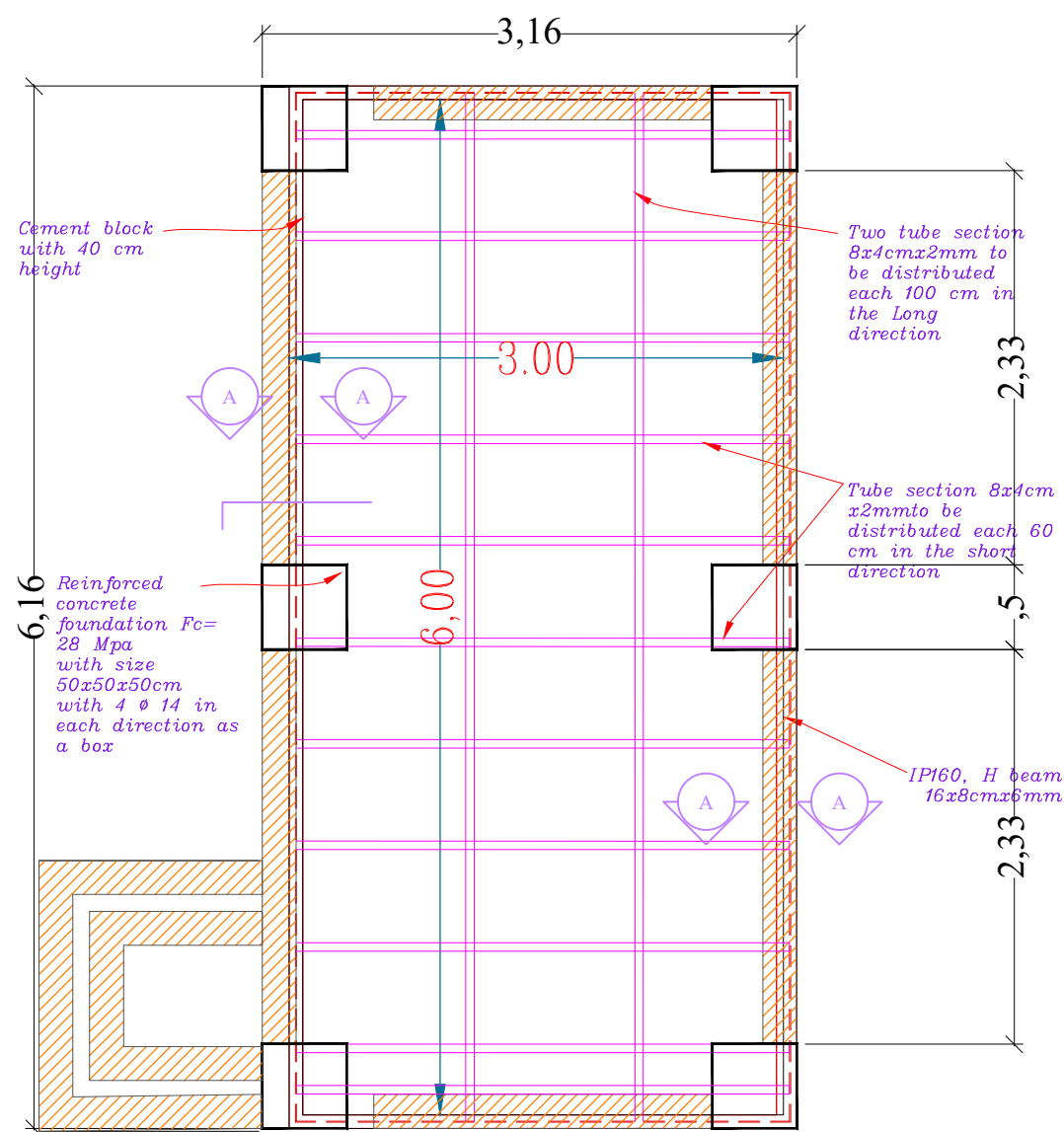
The total duration of the contract is one calendar month including weekends, holidays and official holidays. Official weekends are Fridays and Saturdays.

8. General CONTRACTOR'S OBLIGATIONS:

- The Contractor has to submit Detailed Shop Drawings to be approved by the Engineer before commencement of the work, and all required materials should be supplied as specified and subject to the Engineer approval.
- The Contractor has to fix the underground services that may be damaged during his work.
- All works has to be done according to the Engineer's instructions, Drawings and specification.
- The Contractor has to repair any damages of any services at full satisfaction of relevant Service Authority • The contractor has to test on his own expenses, the sub-grade CBR before commencement of work, In case the CBR value less than 15%, then soil replacement should be applied.
- Price will include costs of removing and/or relocating of all obstacles such as debris, garbage, trees and existing services in addition to the required materials necessary for work completion according to engineer's instructions and specifications.
- From commencement to completion of the works, the Contractor shall take full responsibility, care of and precautions to prevent loss or damage and to minimize loss or damage to the greatest extent possible and shall be liable for any damage or loss that may happen to the Works or any part thereof from any cause whatsoever (save and except the Excepted Risks) and shall at his own cost repair and make good the same so that, at completion, the works shall be in good order and conditions and in conformity in every respect with the



United Nations Development Programme (UNDP)			 
Project:	BoQs for Pre-fab Construction Work of YMACC in ADEN		
Location:	YMACC Office, Aden , Yemen		
Drawing Title: Plans for the Prefab			
Date	4. April.2021	Drawing Type	Architectural
Paper Size	A3	Drawing No.	①

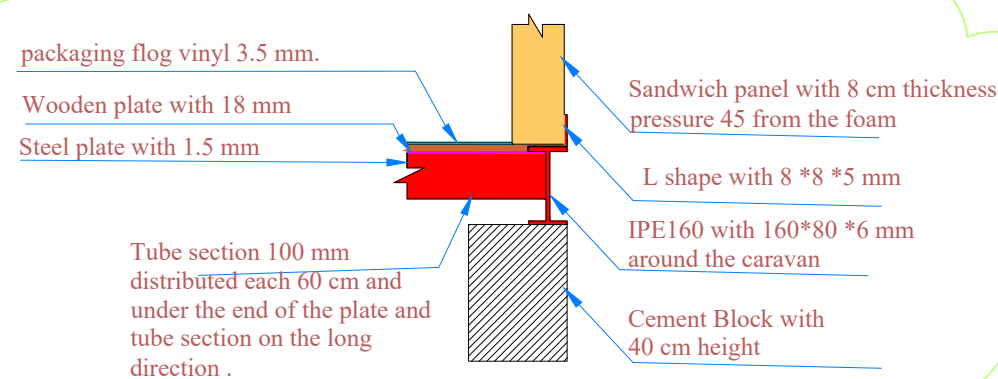


Schedule of Doors

Symbol	Specification	Width	High	Number
D1	Swing Sandwich panel door with 10 cm thickness	0.90m	2.00m	1

Schedule of Windows

Symbol	Specification	Width	High	Sill	Number
W1	Sliding aluminum window with wooden color	1.20m	1.00 m	0.90 m	1
W2	Sliding aluminum window with wooden color	1.50m	1.00 m	0.90 m	1



Section A

United Nations Development Programme (UNDP)

Project: BoQs for Pre-fab Construction Work of YMACC in ADEN

Location: YMACC Office, Aden , Yemen

Drawing Title: Plans for the Prefab

Date: 4. April.2021

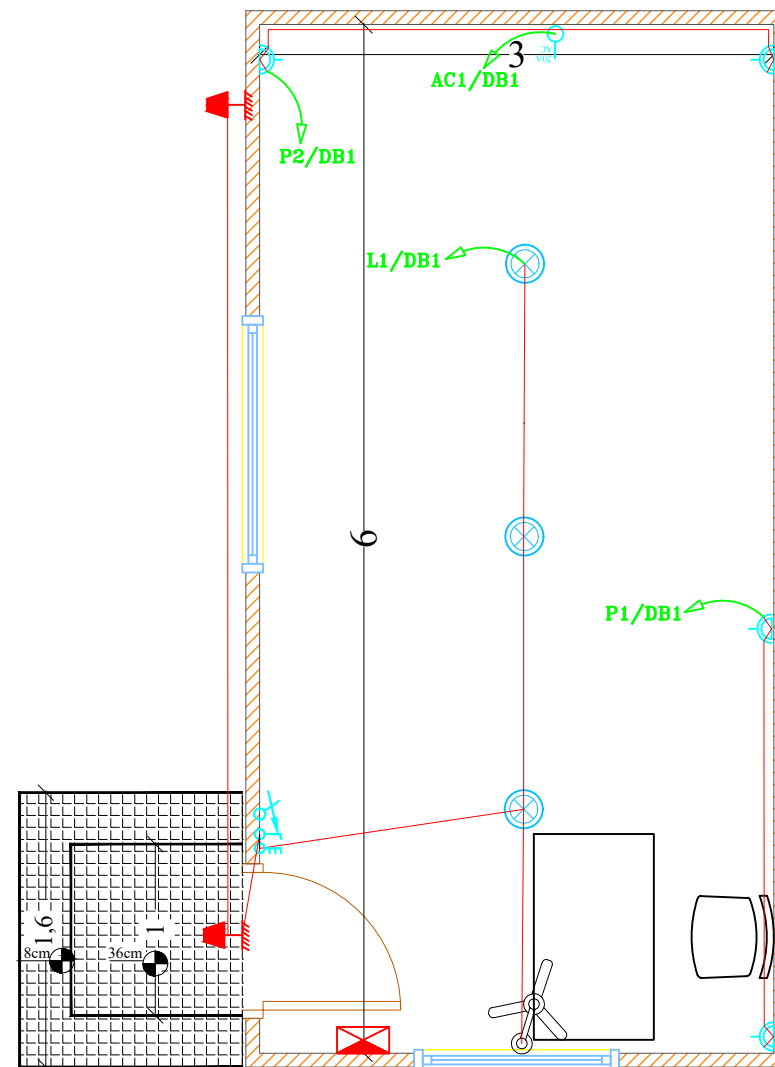
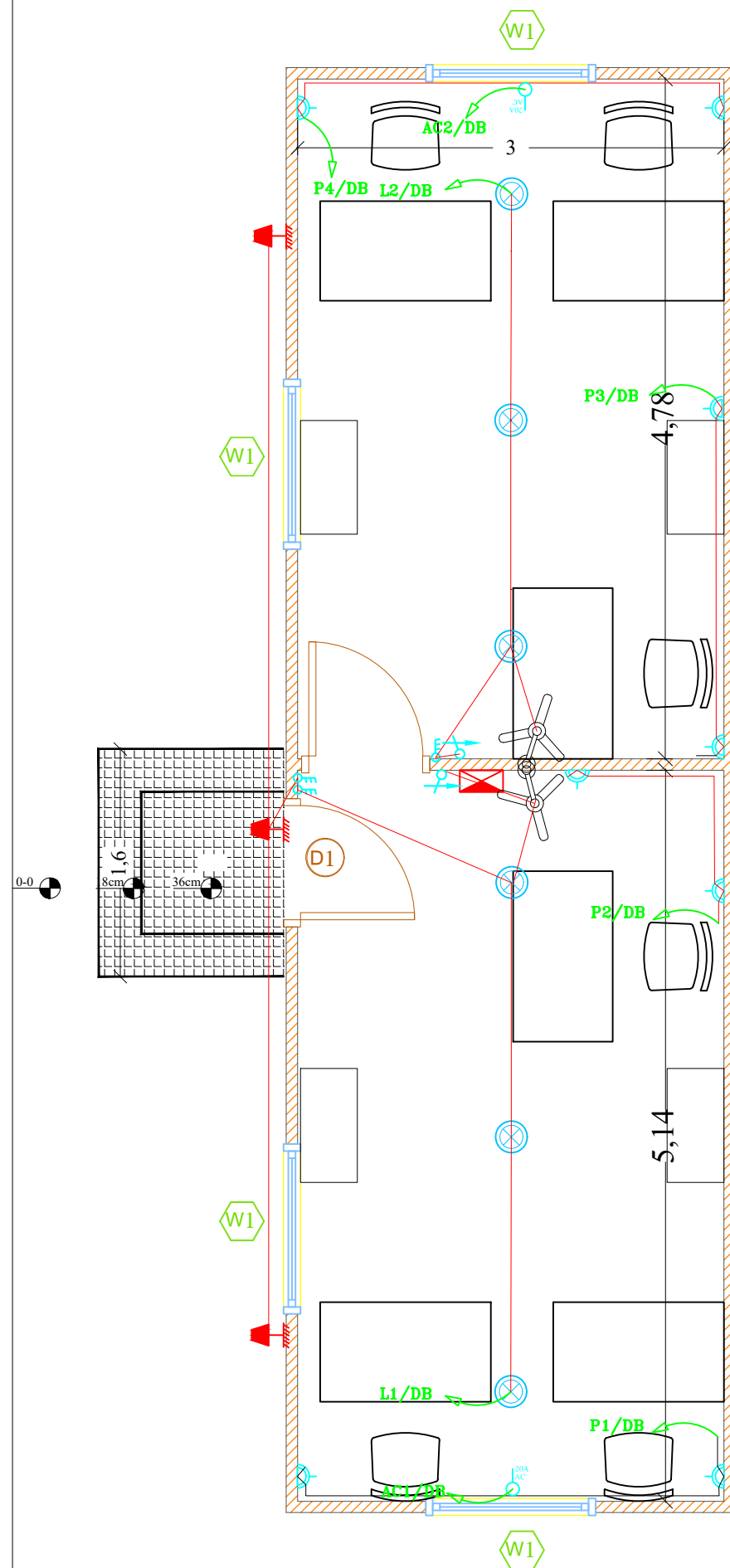
Drawing Type

Architectural

Paper Size: A3

Drawing No.

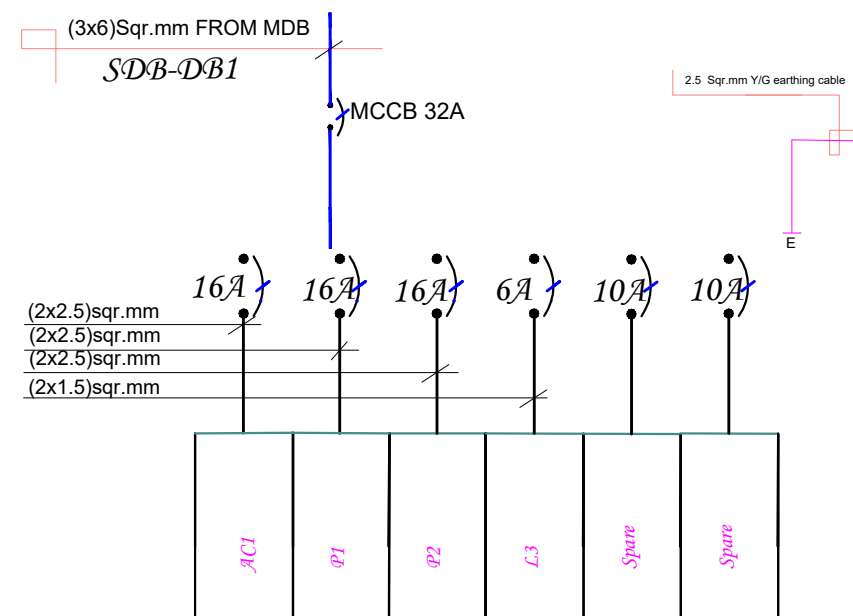
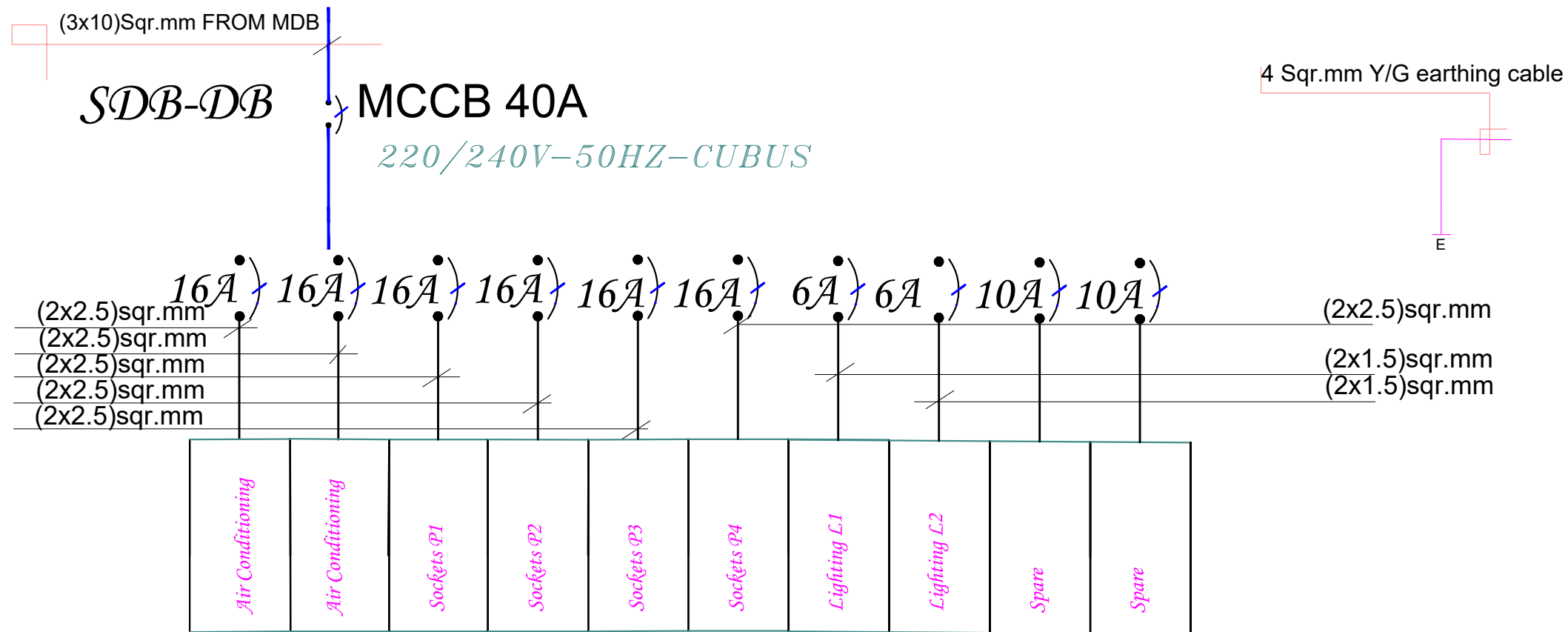
2



SYMBOL	DISCRIPTION
	13A EARTHED , SHUTTERED AND SWITCHED DUPLEX SOCKET OUTLET, MOUNTED AT 0.4m HEIGHT FROM FFL
	2x18W CEILING MOUNTED LED LUMINAIRE
	SDB-Secondary DISTRIBUTION BOARD
	WATERPROOF 20W OUTDOOR DECORATIVE LED LUMINAIRE IP55
	10A, 2 GANG, one WAY SWITCH
	10A, 3 GANG, one WAY SWITCH
	Switch for fan .
	20A-220V, WALL MOUNTED SWITCHED WITH RED INDICATOR FOR AIR CONDITIONING

United Nations Development Programme (UNDP)		
Project:	BoQs for Pre-fab Construction Work of YMACC in ADEN	
Location:	YMACC Office, Aden , Yemen	

Drawing Title: Electrical for the Prefab			
Date	4. April.2021	Drawing Type	Electrical
Paper Size	A3	Drawing No.	3



United Nations Development Programme (UNDP)

Project: BoQs for Pre-fab Construction Work of YMACC in ADEN

Location: YMACC Office, Aden , Yemen



Drawing Title: SDB for the Prefab

Date: 4. April.2021 Drawing Type: Electrical

Paper Size: A3 Drawing No. 4