



PROPOSED REHABILITATION AND EQUIPPING OF THE SANTA  
COMMUNITY MULTI-FUNCTIONAL CENTER FOR WOMEN  
AND YOUTHS SANTA

MODIFICATION

CONTENT:

MAIN HALL

- SITE PLAN
- SEPTIC TANK AND SOAKAWAY
- FOUNDATION
- GROUND PLAN
- MEZZANINE PLAN
- ROOF PLAN
- ELECTRICAL PLANS
- ELEVATIONS
- 3 DIMENSIONS

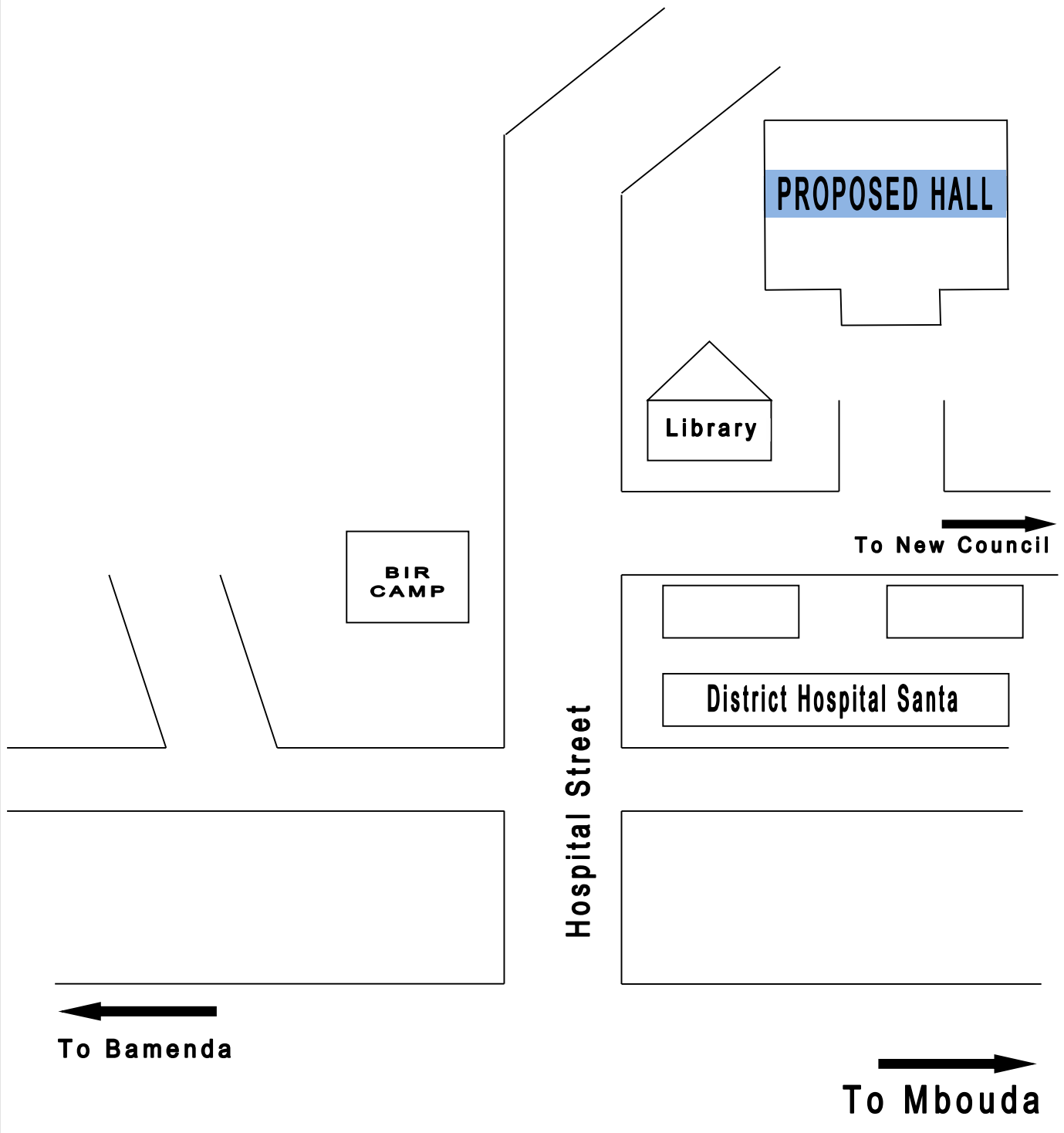
DATE:	16 / 06 / 2021
SCALE:	1:75, 1:250,1:10000

URBAN DEVELOPMENT

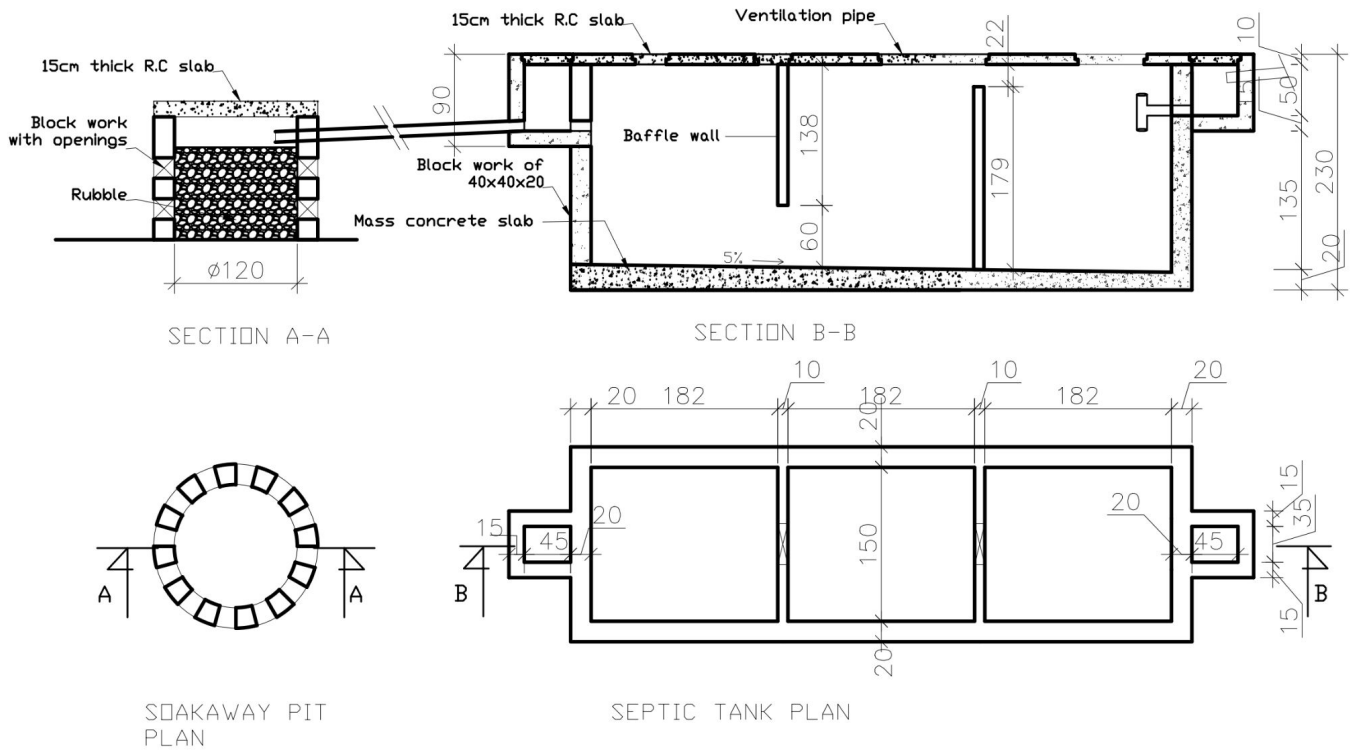
HEALTH

MAYOR

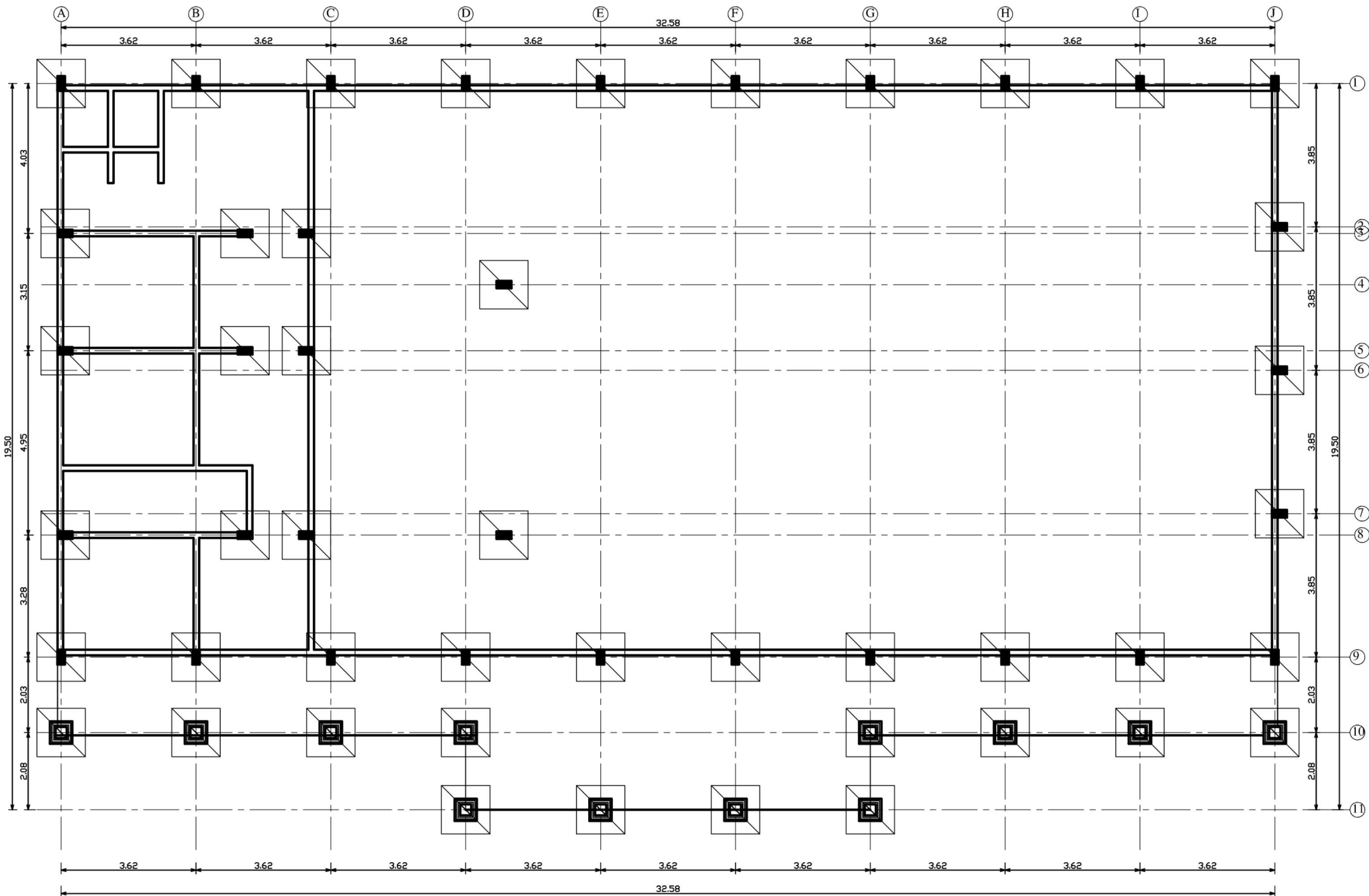
# SITE PLAN OF SANTA COMMUNITY MULTI-FUNCTIONAL CENTER FOR WOMEN AND YOUTHS



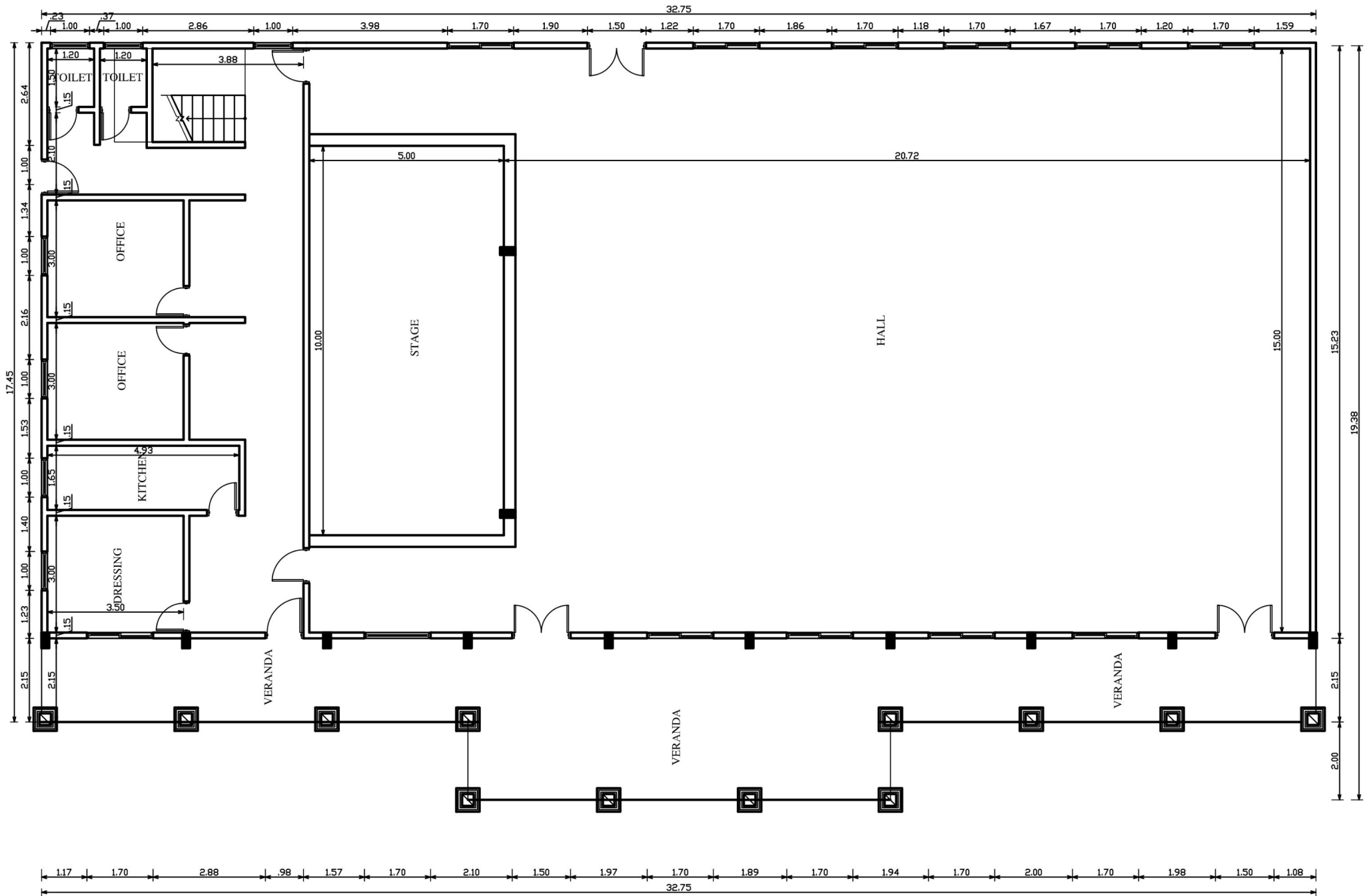
**SEPTIC TANK AND SOAKAWAY PIT DETAILS**



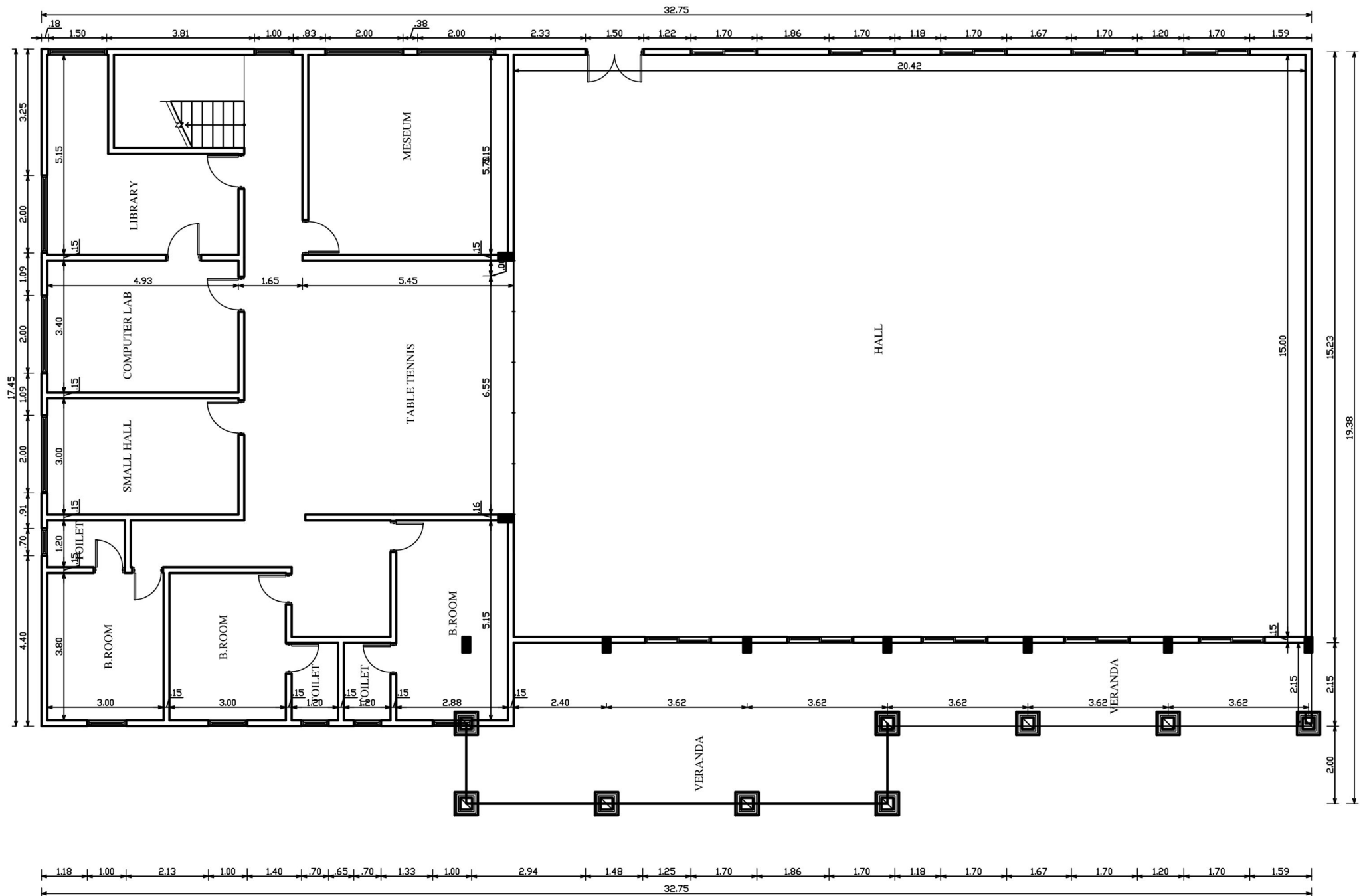
Number of users	5	10	15	20	25	30	40	50	100	200
volume 1 and 2	1600	3000	1500	6000	7500	9000	1000	12500	20000	40000
L 1	090	090	140	140	140	165	165	210	330	400
L 2	040	040	050	060	060	070	075	090	120	130
L 3	100	100	100	100	200	200	200	200	200	300
Length	120	170	150	150	200	200	200	200	200	200
Ht of liquid	100	200	200	200	200	200	210	210	240	220
Ht total evide	120	215	215	215	215	215	225	225	255	265
Number of syphons	1	2	2	2	4	4	4	4	4	8



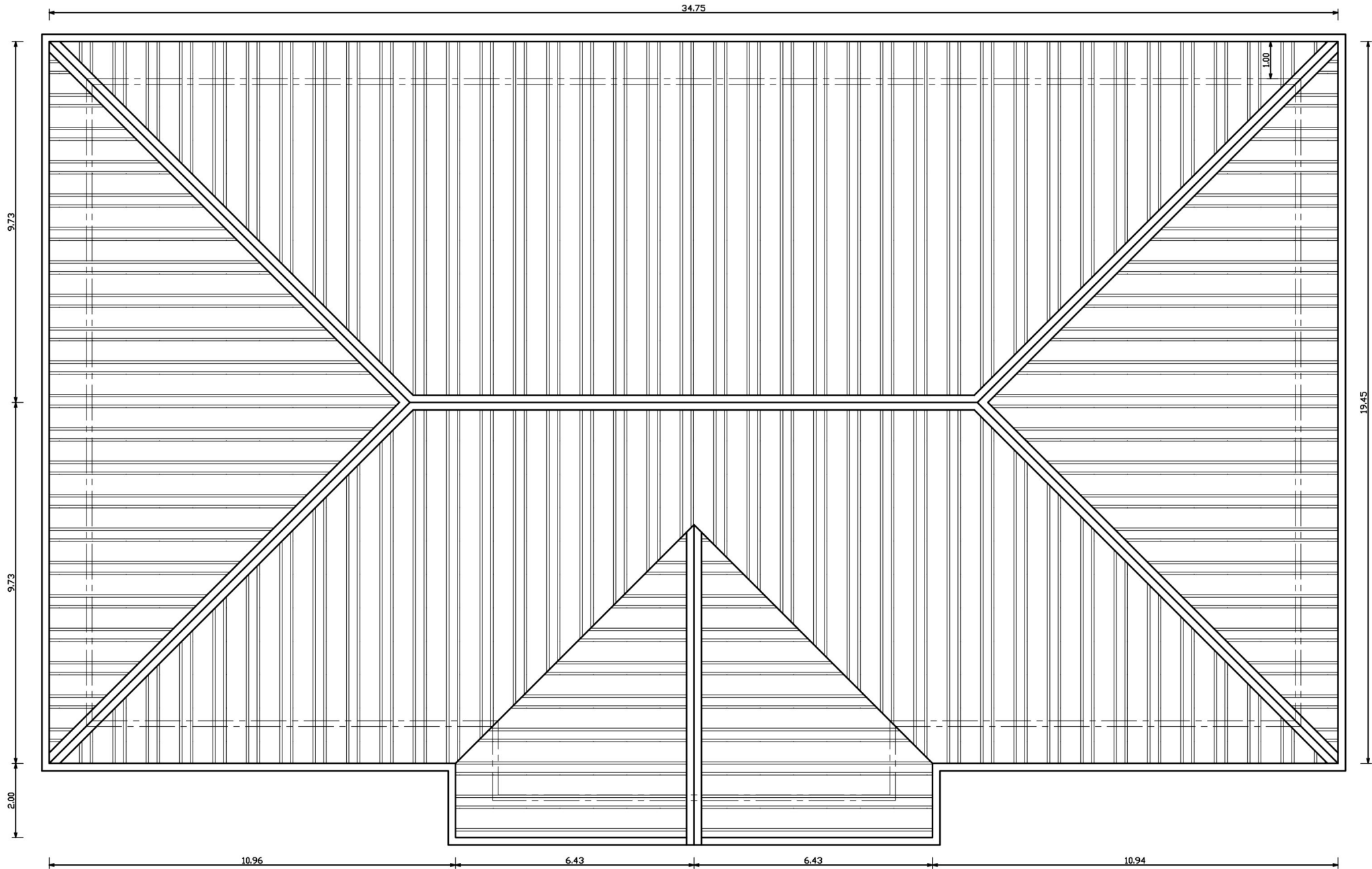
FOUNDATION PLAN



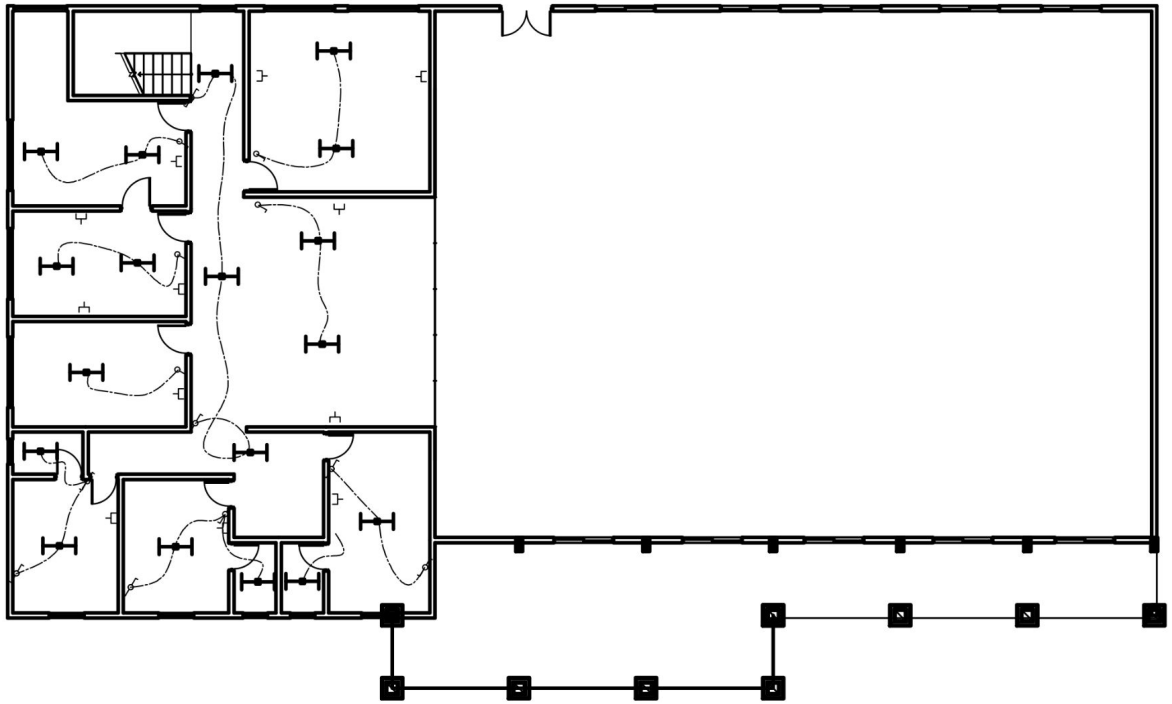
GROUND PLAN



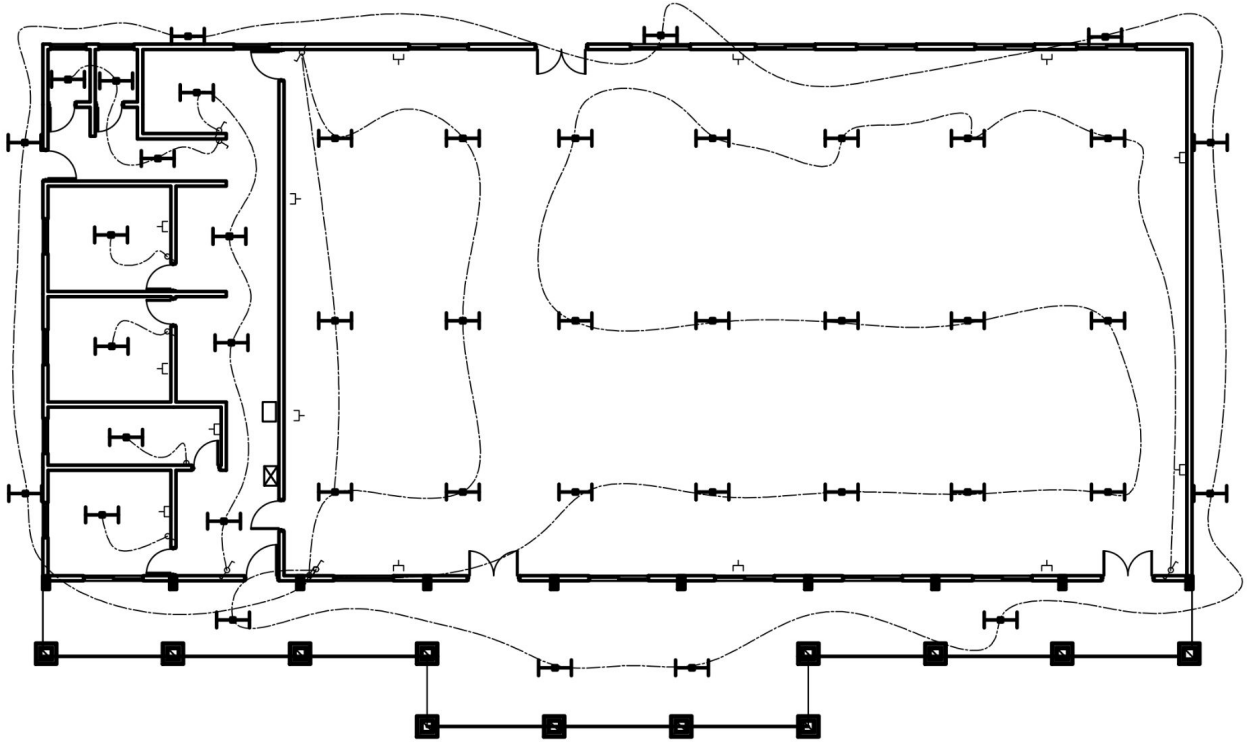
MEZZANINE PLAN



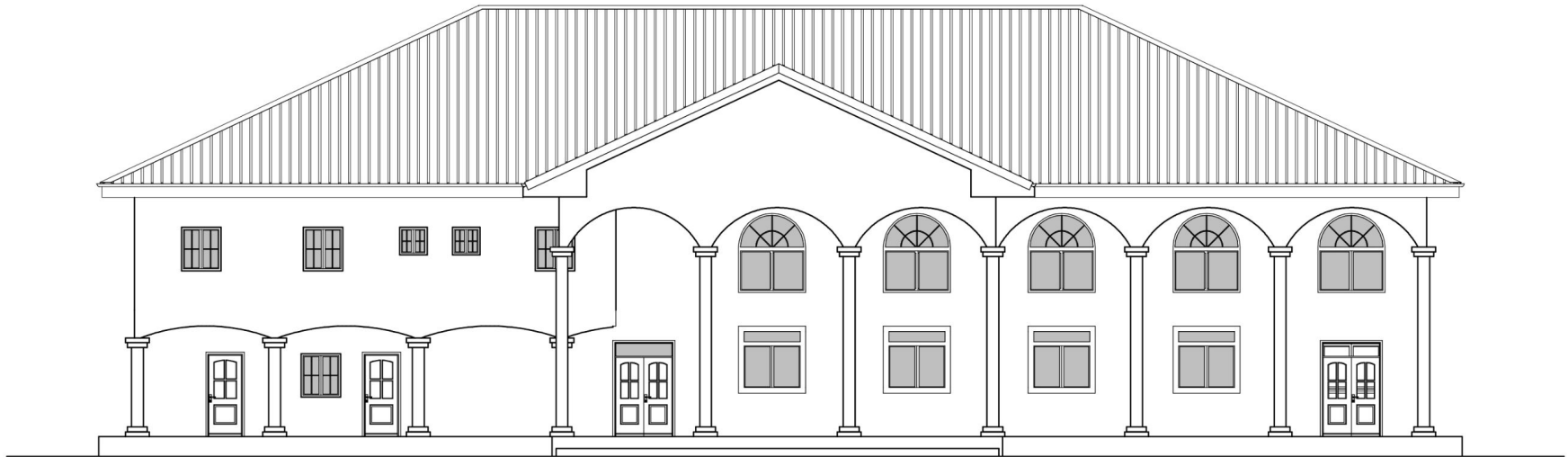
ROOF PLAN



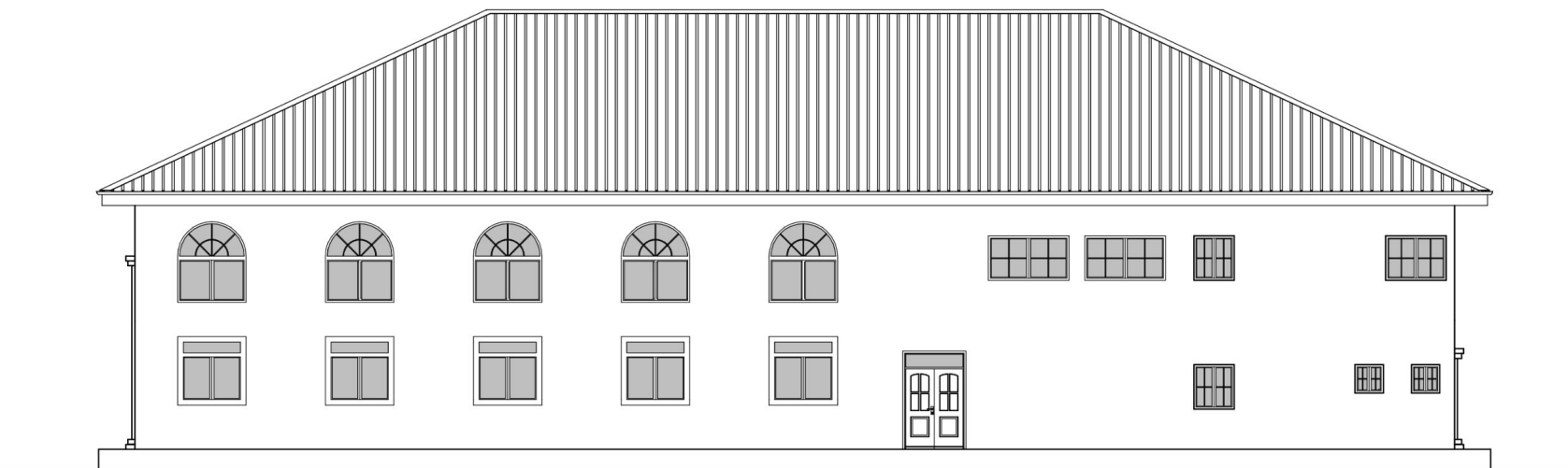
KEY	
	SOCKET F
	2 POLE 2 WAY
	1 POLE 1 WAY
	PUSH BUTTON
	LUMINAIRES
	FLUO END 120
	JUNCTION BOX
	FUSE BOX
	POWER LINE



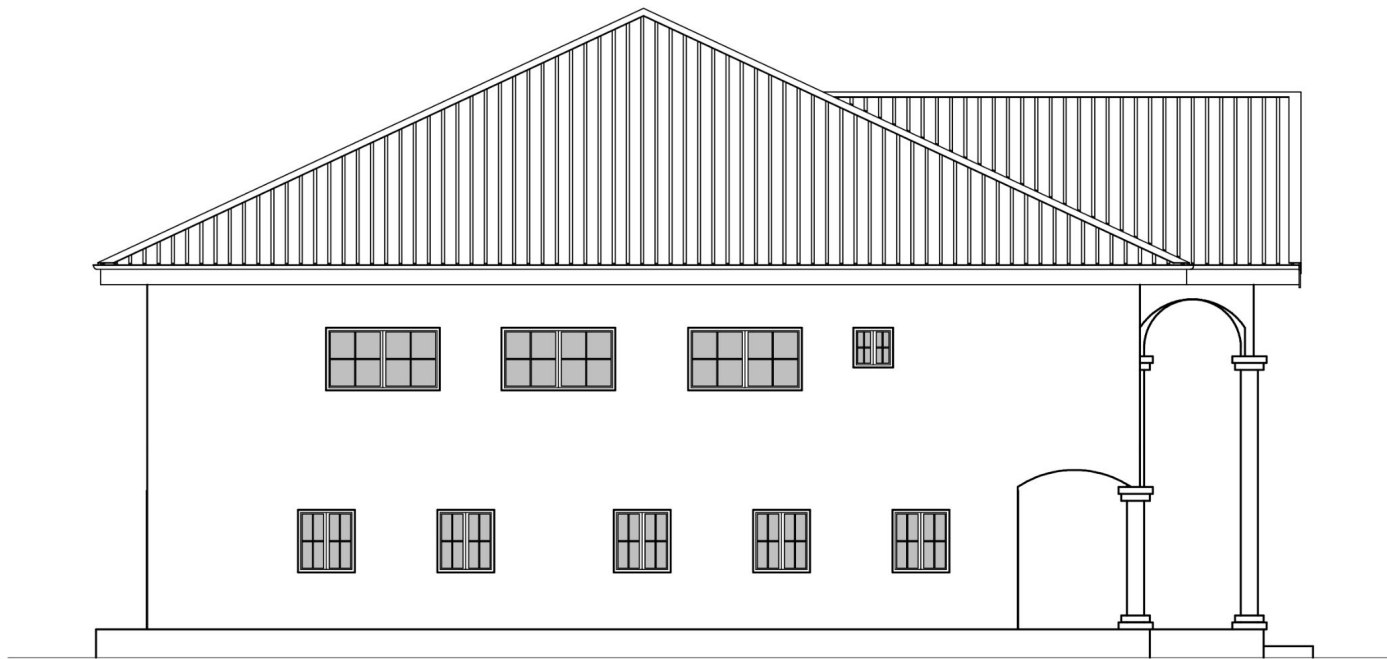




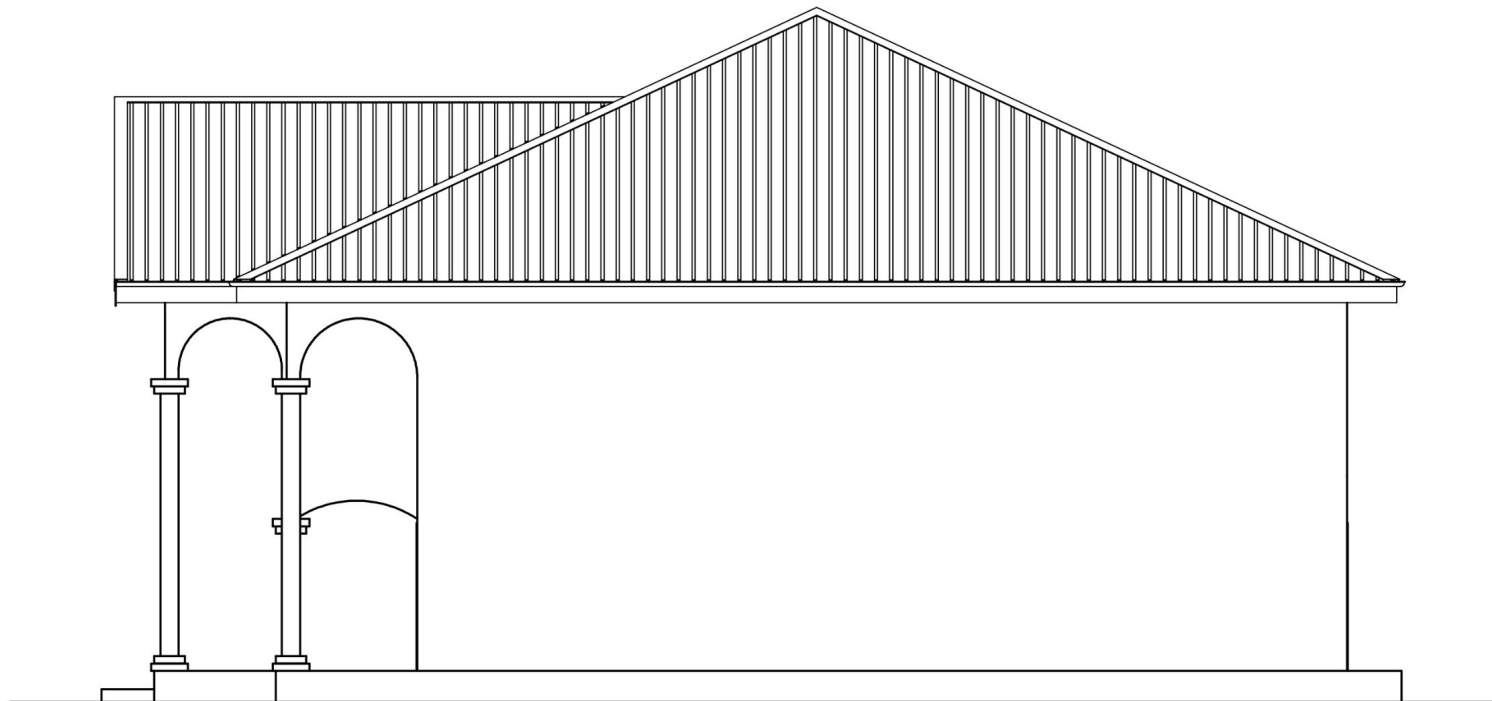
**FRONT ELEVATION**



**REAR ELEVATION**



**LEFT ELEVATION**



**RIGHT ELEVATION**





