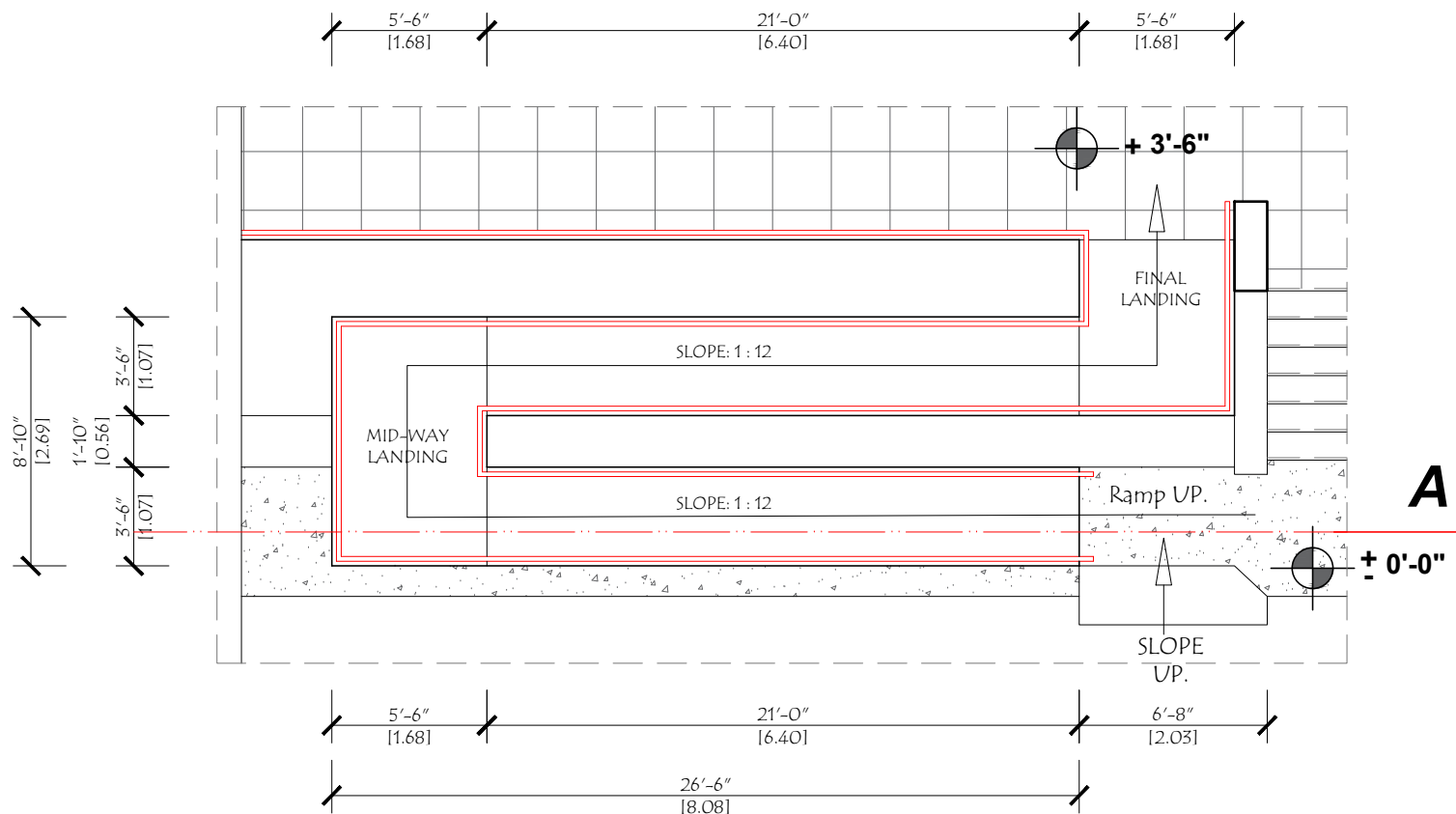


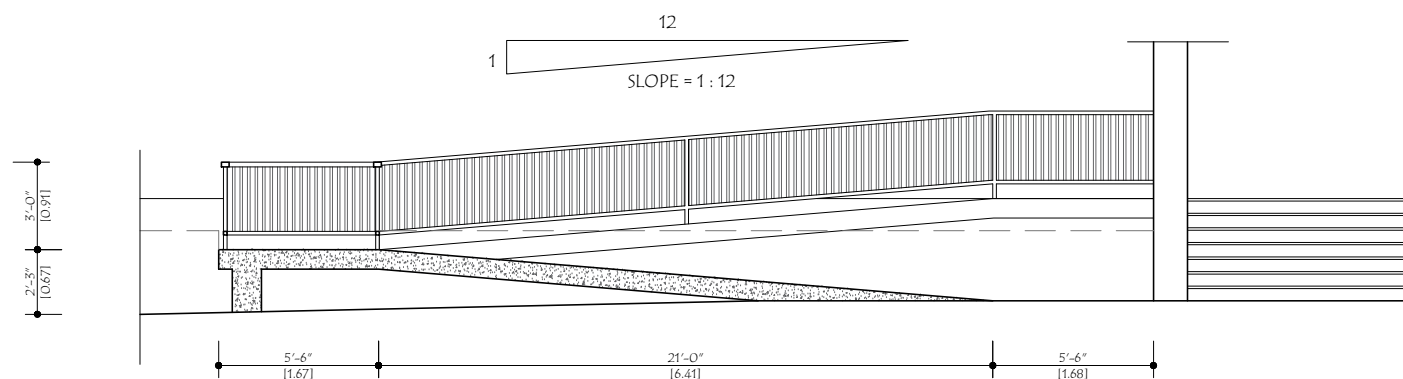
PROPOSED ACCESSIBLE RAMP @ PAP MAIN ENTRANCE

Scale : N/A



REINFORCED CONCRETE RAMP

Scale : N/A



SECTION @ A

ADA Wheelchair Ramp Specifications & Guidelines

Contact your local building inspector for additional information and to obtain the necessary building permits.

♦ ADA Standards REQUIRE a 1:12 slope ratio which equals 4.8 degrees or one foot of wheelchair ramp for each inch of rise. For instance, a 30 inch rise requires a 30 foot handicap wheelchair ramp.

♦ ADA Guidelines REQUIRE a Minimum 5' x 5' Flat, unobstructed area at the top and bottom of the ramp.

♦ ADA Standards REQUIRE wheelchair ramps to have a Minimum 36 inches of clear space across the wheelchair ramp.

♦ ADA Code REQUIRE a Minimum Turn Platform size of 5' x 5'.

♦ ADA Guidelines for Wheelchair Ramps allow a MAXIMUM run of 30 feet of wheelchair ramp before a rest or turn platform.

♦ ADA Ramp Guidelines REQUIRE handrails that are between 34" and 38" in height on both sides of the wheelchair ramps