

# ARCHITECTURAL REPORT



## **PROJECT NAME:**

***Reconstruction of 9-year school "EMIN DURAKU",  
Municipality of Tirana.***

**Programme Title:**    *EU4Schools*

**Financed by:**        *European Union EU*

**Design Team:**        *HT Construction (High Tech Construction) Sh.p.k*

## TABLE OF CONTENTS

1. Geographical position of the building.....	3
2. General facility data .....	5

## CONTENTS OF THE IMIGES

IMAGE 1 Connection of the construction site with the center of Tirana

IMAGE 2 Plan area

IMAGE 3 Ground floor plan of the school

IMAGE 4 Layout of the first floor

IMAGE 5 Layout of the second floor

IMAGE 6 Layout of the third floor

IMAGE 7 Section plan 1-1

IMAGE 8 Section plan A-A

IMAGE 9 Ground floor gym layout

IMAGE 10 Second floor gym layout

IMAGE 11 3D IMAGES



## 1. Geographical position of the building

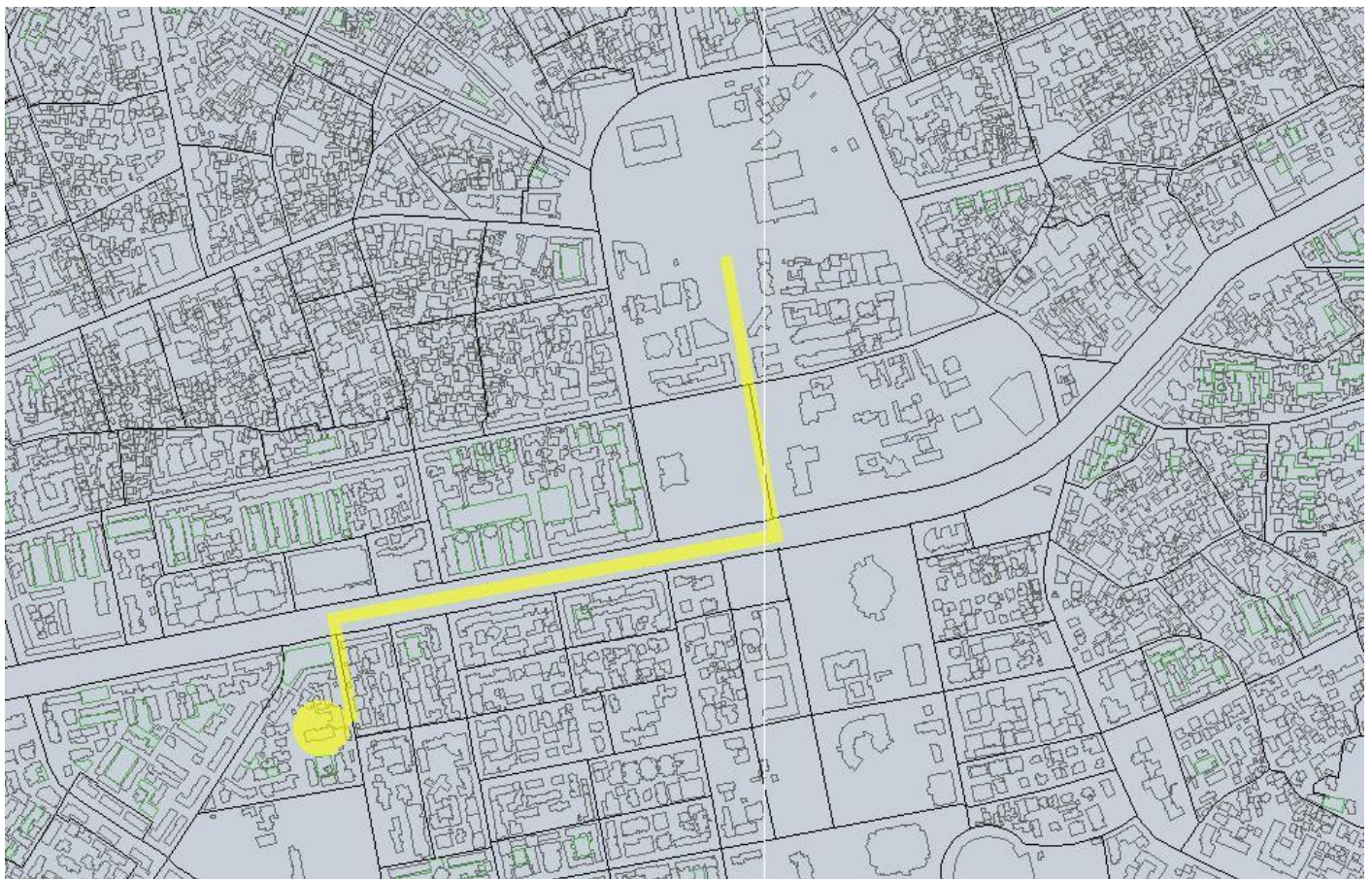
### 9-year school "Emin Duraku"

9-year school "Emin Duraku" is located in the western part of Tirana city.

Positioned in one of the most popular areas of the city, is one of school with a very good reputation in the capital. It is located about 1.4 km near the city center.

It is located at the crossroad of "Pjetër Bogdani" street with "Gjin Bue Shpata" street.

Currently this school accommodates about 1300 students and has an existing construction area of 3900m<sup>2</sup> spread over 3 floors. This existing capacity of the students is not according to the norms of the school design standard.





EU4Schools Program

Construction of 9-year school "EMIN DURAKU",

Municipality of Tirana.

ARCHITECTURAL REPORT

---

### General data of the BUILDING

The proposal comes with a new building with a construction area of 6736 m2 in total.

This facility accommodates students respecting all design standards.

The main entrance to the school premises is from the street "Gjin Bue Shpata".

Property Area	4922 m2
Ground floor area	2136 m2
construction surface on the ground	6736 m2
Floor area ratio	43.4%
Building intensity:	1.36
Max height	17.34 m
Max floor number	4 K





The building is organized with 2 separate volumes. The first L-shaped perimeter volume accommodates classrooms, laboratories and any other academic environment.

The second volume, located in the southern part of the property, is the volume of the gym together with all its auxiliary facilities.





The school is organized in a volume with 4 floors and volume 1 floor of the gym, with an intermediate floor.

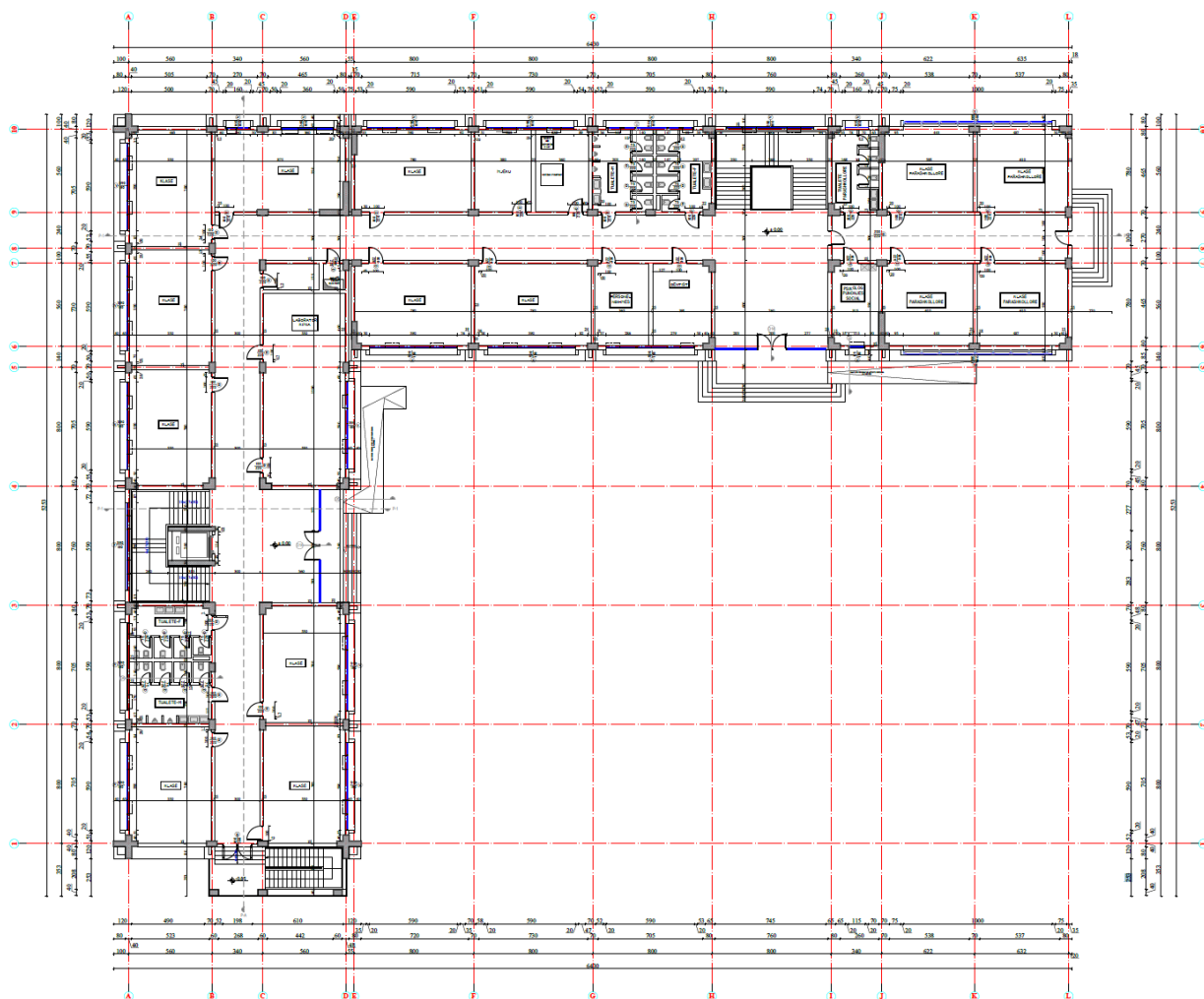
Entrances to the facility are equipped with ramps for people with disabilities.

Vertical movement is realized through the stairs and the elevator.

The building is equipped with 2 stairs, 1 elevator, hygienic-sanitary facilities, emergency stairs and any other necessary environment.

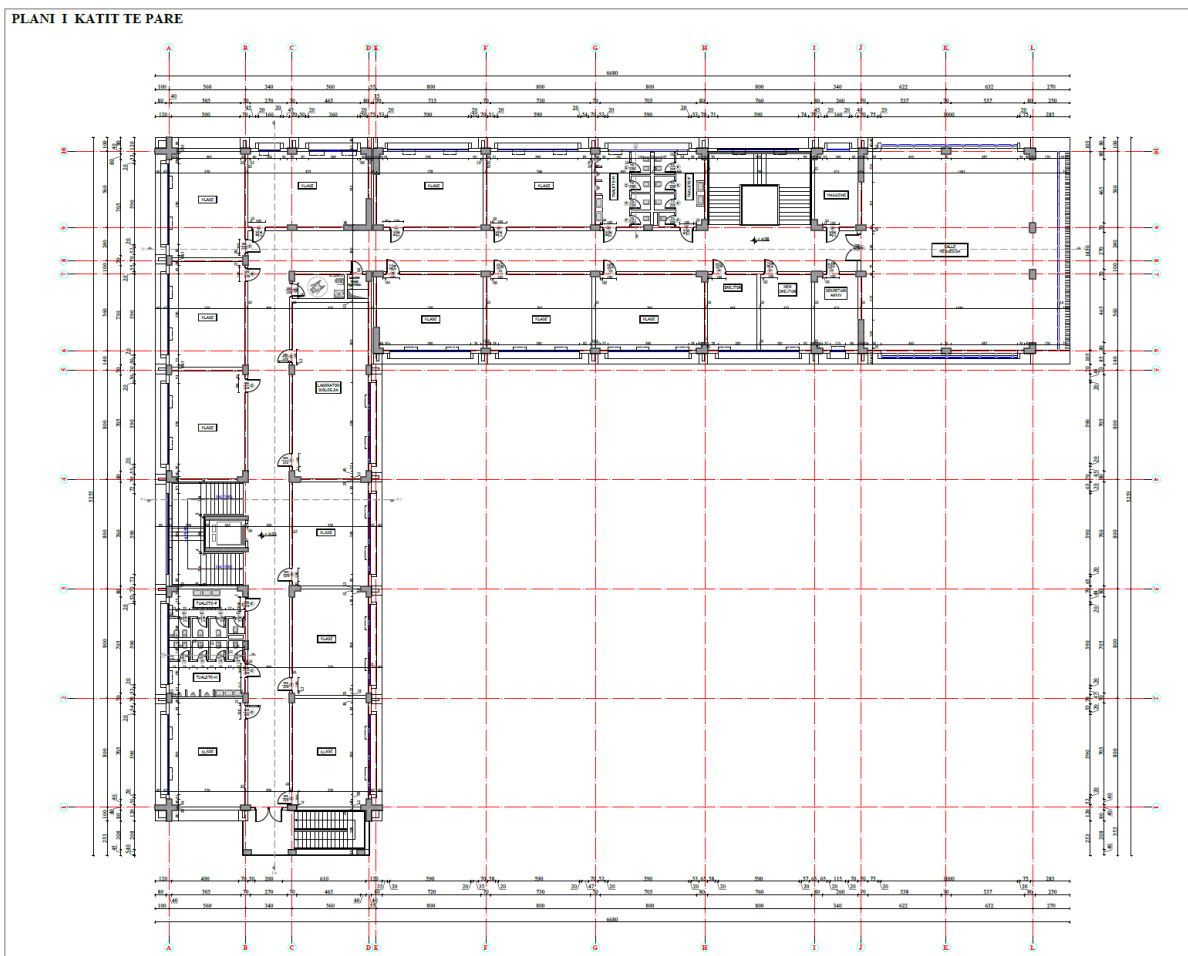


PLANI I KATIT PERDHE



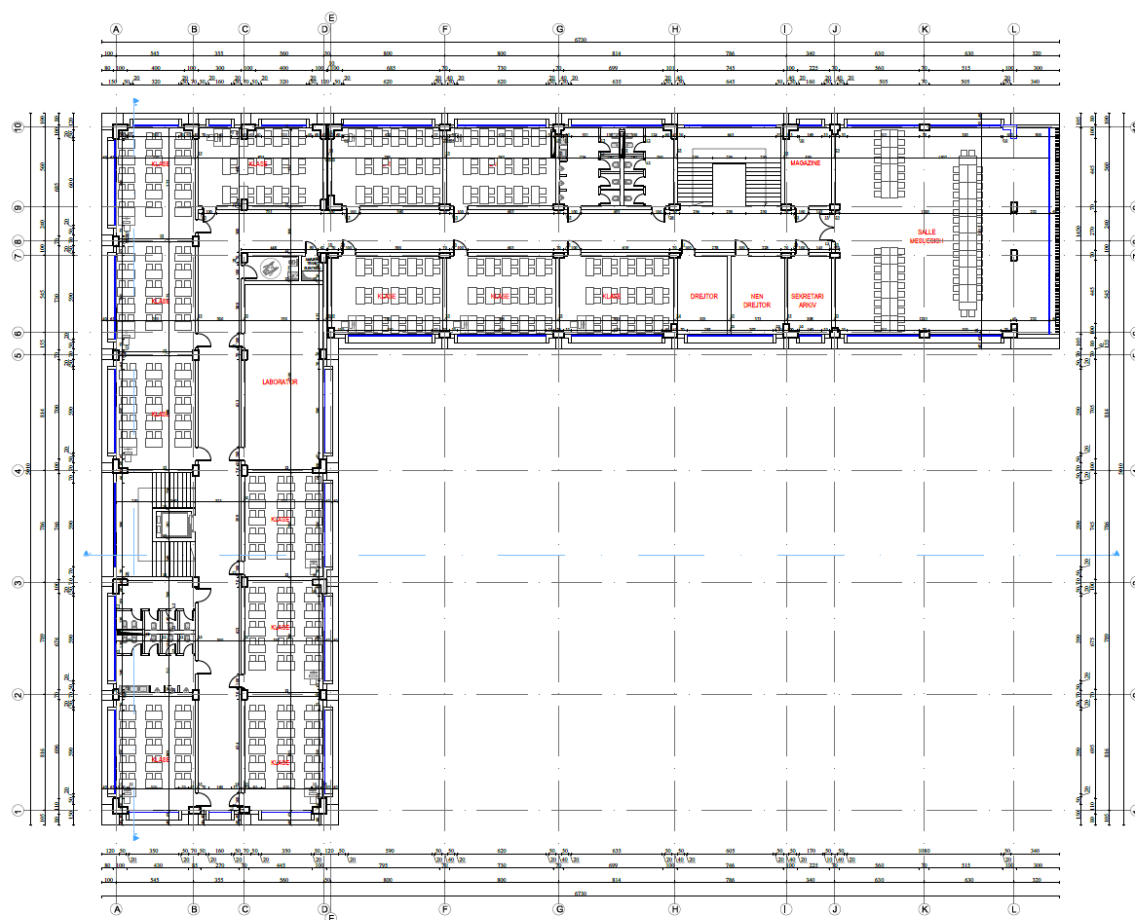
*Ground floor*

Ground floor 1456 m<sup>2</sup>, 10 classrooms, 1 laboratory, doctor, psychologist, 3 preschool classes, 1 class for children, sanitary facilities for preschool, Technical environment, stairs, elevator, corridors, technical facilities.



*First floor*

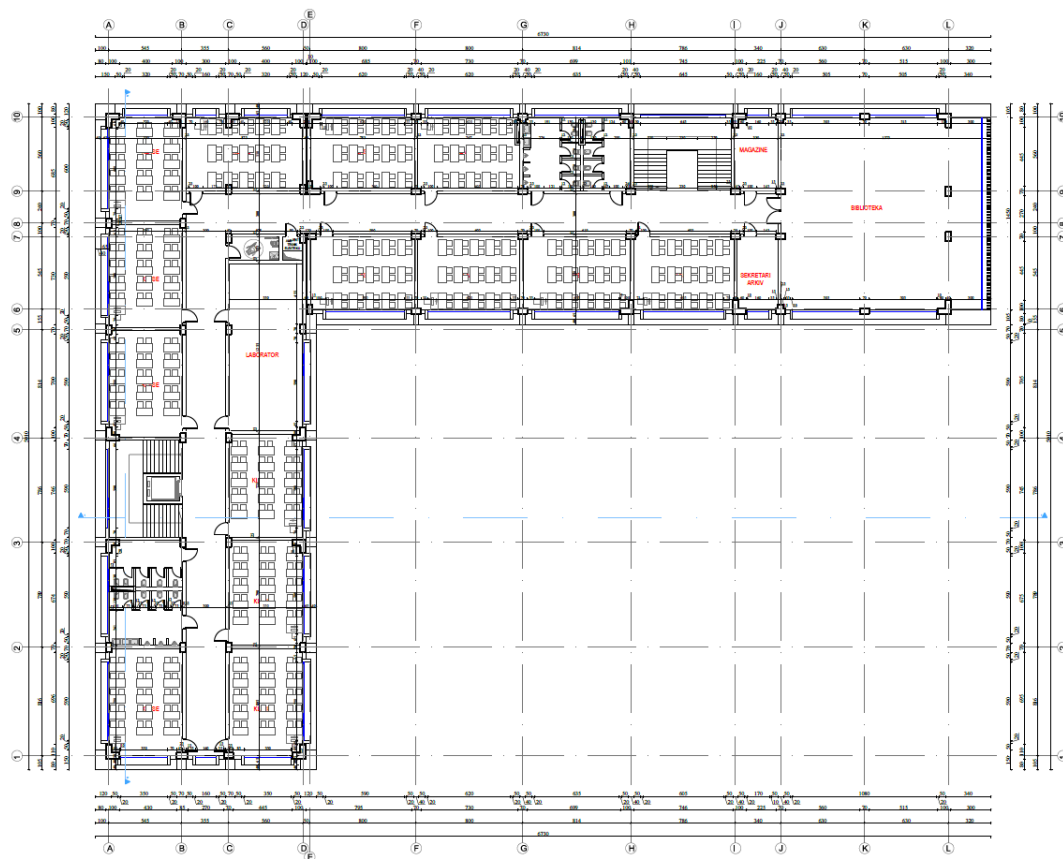
First floor 1491 m2, 13 classrooms, 1 laboratory, teachers' room, 14 bathrooms, administration, toilet for people with disabilities, electrical technical facilities.



*Second floor*

Second floor 1491 m2, 13 classrooms, 14 sanitary units m / f, stairs 1 laboratory, library, 1 sanitary unit for people with disabilities, stairs and elevator.

## ARCHITECTURAL REPORT

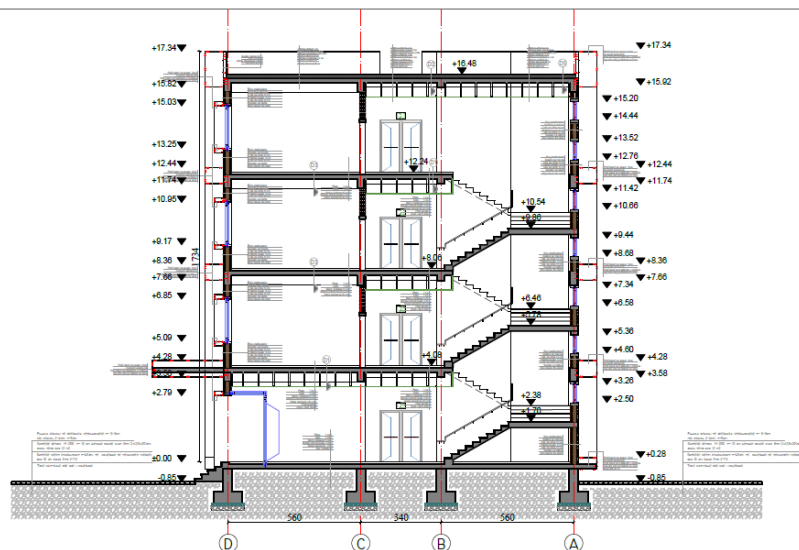


*Third floor*

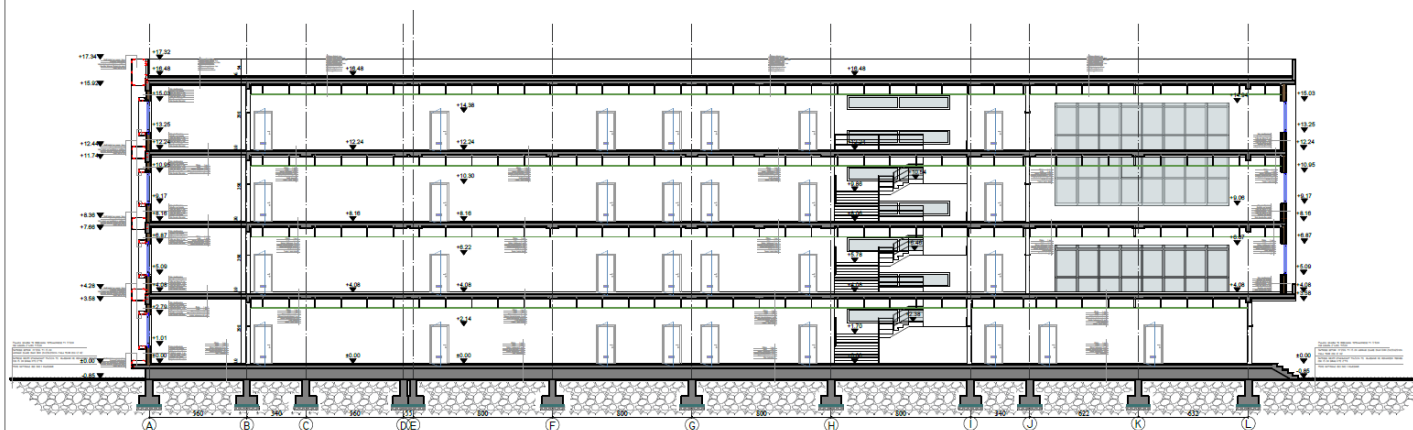
Third floor 1491 m2, 14 classrooms, 14 sanitary units m / f, stairs 1 laboratory, event hall, 1 sanitary unit for people with disabilities, stairs and elevator.



PRERJE TEKNIKE 1-1

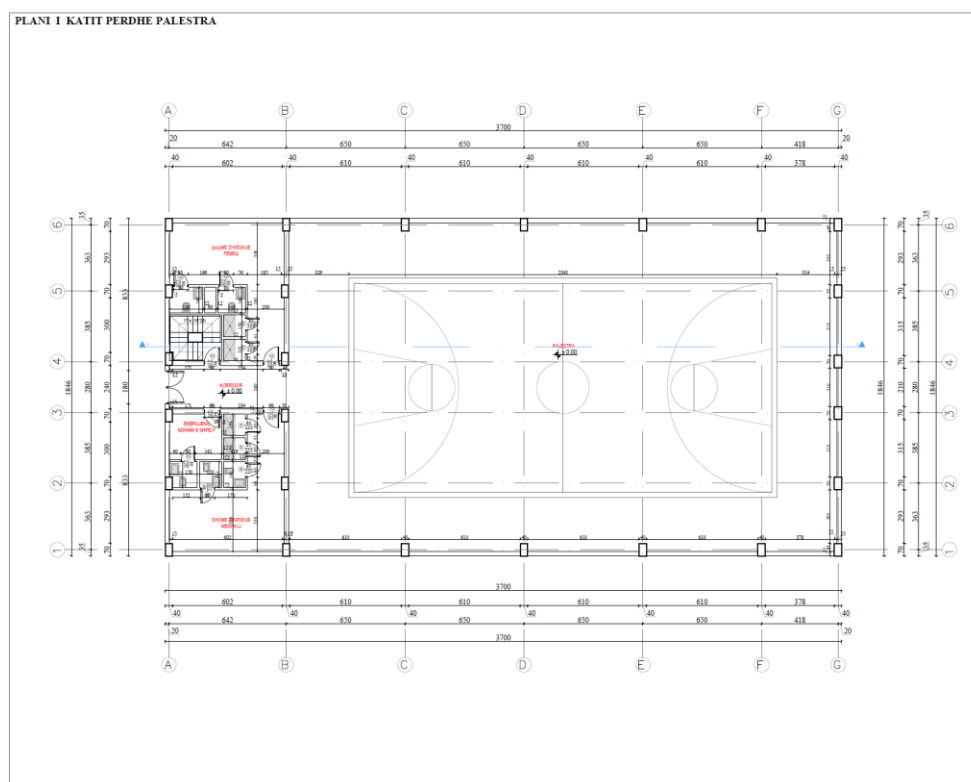


PRERJE TEKNIKE A-A



Section plan

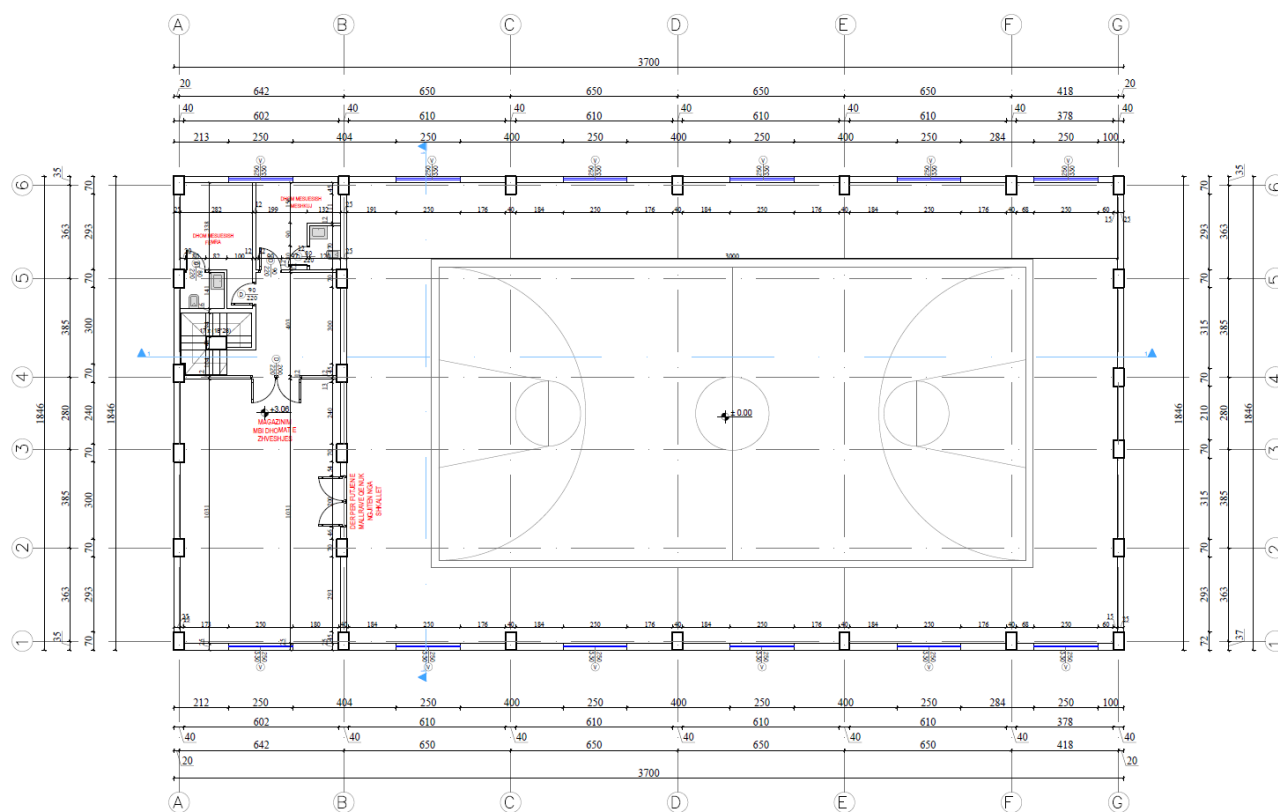
The construction of buildings such as school and gym will be monolithic walls in columns, the perimeter of the building and the interior partitions will be made of brick, the windows will be aluminum double glazed thermal system, the insulation of the building from the outside will be done with a hood system, the corridors of the building will have suspended ceilings for the passage of the electrical network as well as the cooling system, heating and cooling.



Ground floor gym layout

Ground floor of the gym 683 m<sup>2</sup>, changing rooms, toilets and showers, male and female.

PLANI I KATIT MEZANI PALESTRA



Second floor gym layout

second floor of the gym 124 m2, locker room, toilets and showers, male professor female.



EU4Schools Program

Construction of 9-year school "EMIN DURAKU",

Municipality of Tirana.

ARCHITECTURAL REPORT

---

3d images



*Hydajet TOTA*

*Legal Representative of*

*HT Construction (High Tech Construction) Ltd*

*Lic. N.6886/3*